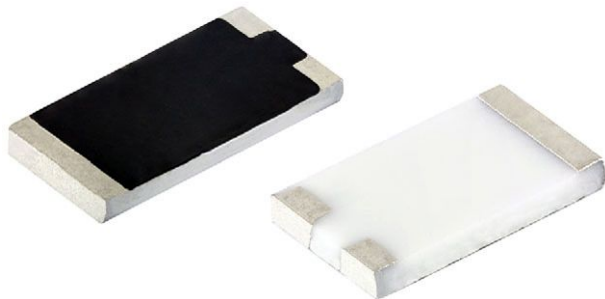




Thick Film Chip Dividers, Medium Voltage



FEATURES

- AEC-Q200 qualified
- Voltage up to 1415 V
- Precision to $\pm 0.5\%$ with low TCR tracking to 10 ppm/ $^{\circ}\text{C}$ utilizing thick film technology
- Wide range of resistance value and ratios
- Flow solderable
- Tape and reel packaging available
- Termination style: 3-sided wraparound termination
- Termination material: solder-coated nickel barrier
- Material categorization: for definitions of compliance please see www.vishay.com/doc?99912



LINKS TO ADDITIONAL RESOURCES



STANDARD ELECTRICAL SPECIFICATIONS						
GLOBAL MODEL	CASE SIZE	POWER RATING $P_{70^{\circ}\text{C}}$ W	MAXIMUM WORKING VOLTAGE ⁽¹⁾ V	RESISTANCE RANGE ⁽²⁾ Ω	TOLERANCE ⁽³⁾ $\pm\%$	TCR TRACKING (-55°C to $+155^{\circ}\text{C}$) \pm ppm/ $^{\circ}\text{C}$
CDMA 2512	2512	1	1415	500K to 50M	0.5, 1, 2, 5, 10	10 to 50

Notes

- (1) Continuous working voltage shall be $\sqrt{P \times R}$ or maximum working voltage, whichever is less
- (2) Resistance values are calibrated at 100 V_{DC}. Calibration at other voltages available upon request
- (3) Contact factory for tighter tolerances

VOLTAGE COEFFICIENTS AND RATIO TRACKING INFORMATION (Typical)			
RESISTANCE (Ω)	RATIO (MAXIMUM)	VCR (ppm/V)	RATIO TRACKING (ppm/ $^{\circ}\text{C}$) -55°C to $+155^{\circ}\text{C}$
500K	100:1	-10	± 20
15M	250:1	-10	± 10
50M	500:1	-10	-50 to 0

Note

- Contact factory for other ratios

GLOBAL PART NUMBER INFORMATION							
New Global Part Numbering: CDMA20K0J1000GEB							
GLOBAL MODEL	RESISTANCE VALUE (R_1)	TOLERANCE	RATIO ($R_1 + R_2$) / R_2	RATIO TOLERANCE	SOLDER TERMINATION	PACKAGING	SPECIAL
CDMA = CDMA2512	K = k Ω M = M Ω 20K0 = 20 k Ω 800K = 800 k Ω 1M00 = 1 M Ω	D = $\pm 0.5\%$ F = $\pm 1\%$ G = $\pm 2\%$ J = $\pm 5\%$ K = $\pm 10\%$	3 digit significant figure, followed by a multiplier 1000 = 100:1 2000 = 200:1	D = $\pm 0.5\%$ F = $\pm 1\%$ G = $\pm 2\%$ H = $\pm 3\%$ J = $\pm 5\%$	E = Sn100	B = bulk (250 pcs max.) F = T / R (full reel) 1 = T / R (1000 pcs) 5 = T / R (500 pcs) T = T / R (250 pcs min.) W = waffle tray	

Note

- For additional information on packaging, refer to the "Surface-Mount Resistor Packaging" document (www.vishay.com/doc?31543)

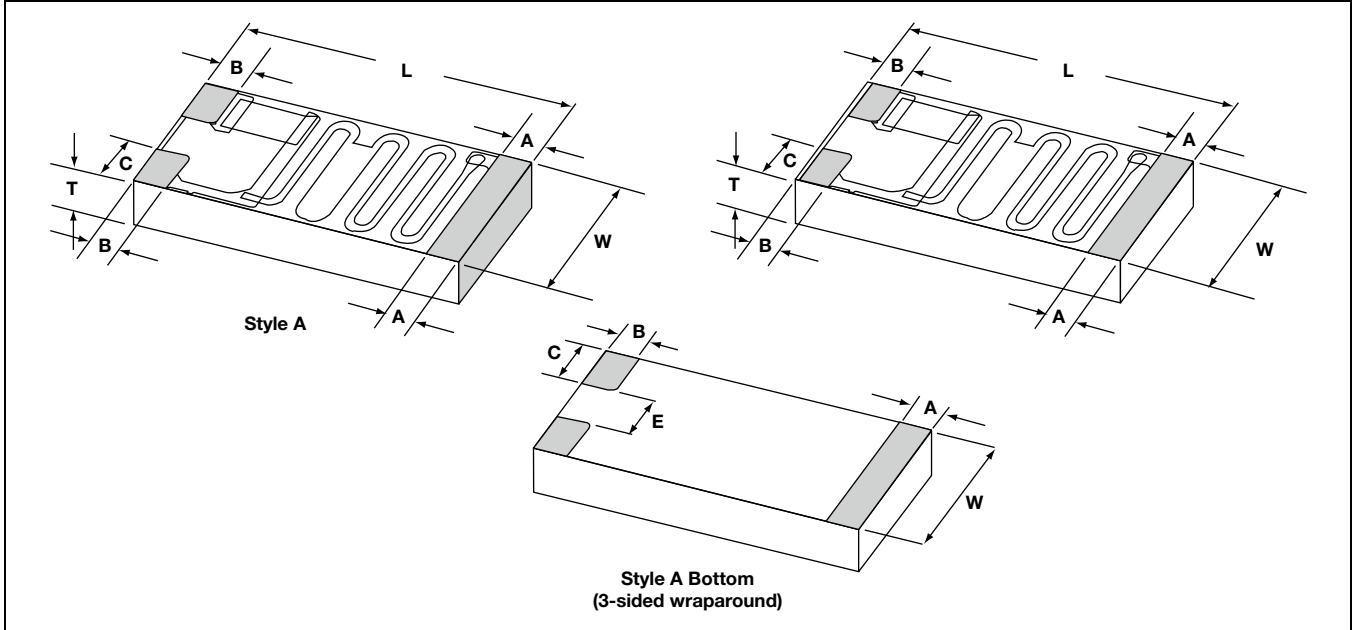
MATERIAL SPECIFICATIONS	
Resistive element	Ruthenium oxide
Encapsulation	Epoxy
Substrate	96 % alumina
Termination	Solder-coated nickel barrier terminations standard
Solder finish	Pure tin or tin

ENVIRONMENTAL SPECIFICATIONS	
Operating temperature	-55 °C to +155 °C
Life	Less than 0.5 % change when tested at full rated power

Note

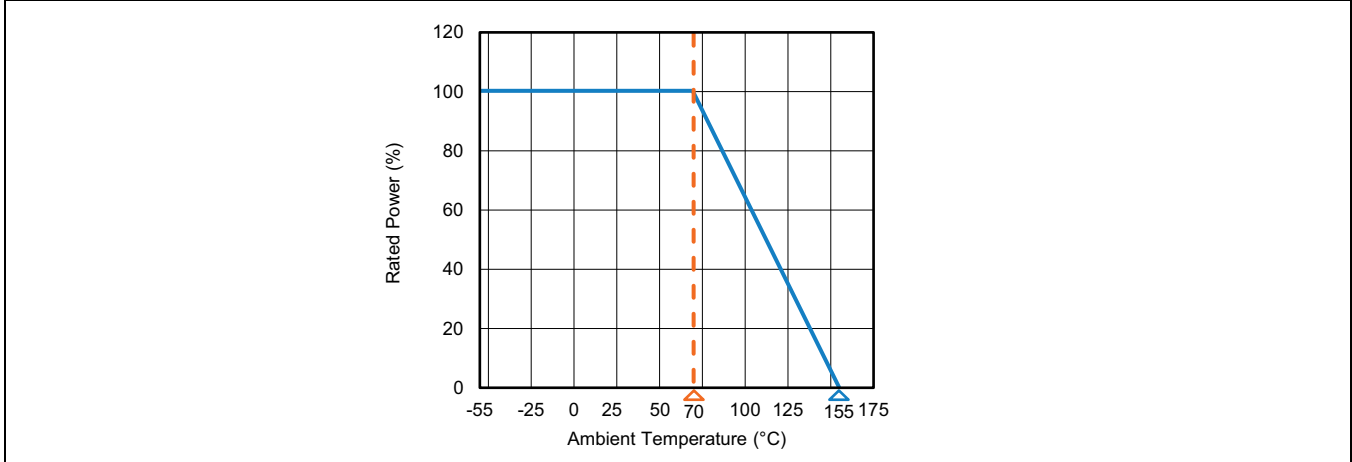
- Reference only: not for all values specified. Consult factory for your size and value

DIMENSIONS in inches (millimeters)



TERMINATION	LENGTH (L) ± 0.006 (0.152)	WIDTH (W) ± 0.006 (0.152)	THICKNESS (T) ± 0.005 (0.127)	A ± 0.005	B ± 0.005	C ± 0.005	E ± 0.010
Style A (3-sided wraparound)	0.250	0.126	0.025	0.025	0.025	0.040	0.046

DERATING CURVE

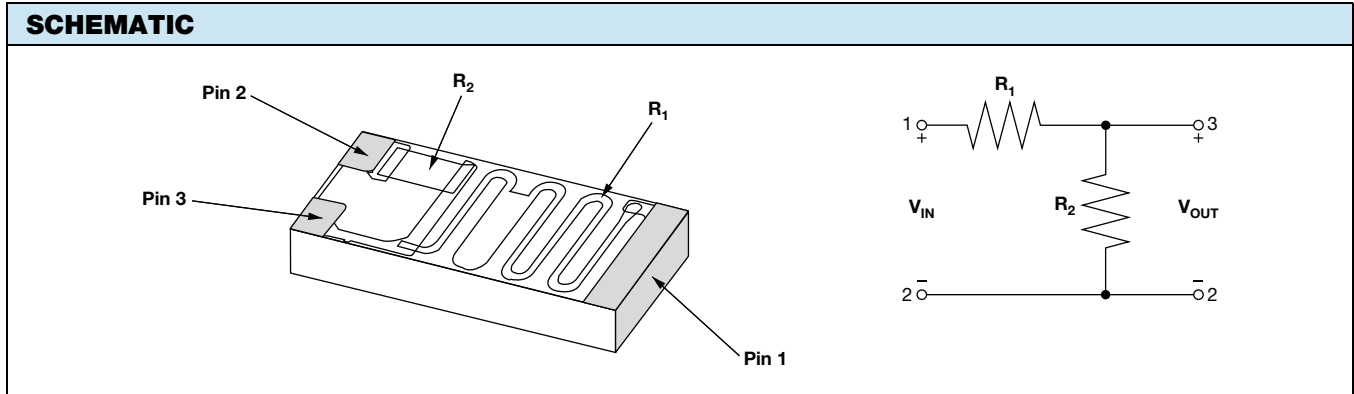


Note

- Reference only: not for all values specified. Consult factory for your specific value



TYPE	TERMINATION MATERIAL	TERMINATION STYLE	TERMINATION STYLE / MATERIAL CODE	SOLDER TERMINATION CODE
Solderable	Nickel barrier	3-sided (wraparound)	AF	E or T



X-ON Electronics

Largest Supplier of Electrical and Electronic Components

Click to view similar products for [Resistor Networks & Arrays](#) category:

Click to view products by [Vishay](#) manufacturer:

Other Similar products are found below :

[CSC06A0122K0GEJ](#) [CSC08A01470KGEK](#) [M8340105K1002FGD03](#) [M8340105M4700JGD03](#) [M8340107K1471FGD03](#)
[M8340108K2402GGD03](#) [M8340108K3240FGD03](#) [M8340108K3242FGD03](#) [M8340108K3743FGD03](#) [M8340108K6192FGD03](#)
[M8340109K2002FCD03](#) [M8340109K2872FCD03](#) [M8340109K4700GGD03](#) [M8340109M4701GCD03](#) [M8340109MA010GHD03](#)
[744C083101JTR](#) [EXB-U18240JX](#) [744C083270JTR](#) [745C102472JP](#) [745X101103JP](#) [MDP1603100KGE04](#) [770101223](#) [MNR04M0APJ471](#)
[MNR14E0APJ100](#) [MNR18E0APJ102](#) [MNR18E0APJ680](#) [ACAS06S0830339P100](#) [ACAS06S0830343P100](#) [ACAS06S0830344P100](#)
[RAVF164DJT68K0](#) [RM2012A-102/104-PBVW10](#) [RM2012A-502104-PBVW10](#) [NRSN04I4J220TRF](#) [NRSN06I4J330TRF](#)
[NRSNA4I4J330TRF](#) [8B472TR4](#) [ACAS06S0830341P100](#) [ACAS06S0830342P100](#) [ACAS06S0830345P100](#) [EXB-18N390JX](#)
[CSC09A014K70JEK](#) [M8340105K1502GGD03](#) [M8340105K8251FGD03](#) [M8340107K3402FCD03](#) [M8340108K1000GGD03](#)
[M8340108K2001FCD03](#) [M8340108K3901GGD03](#) [M8340108K5111FGD03](#) [M8340108K6201GGD03](#) [M8340109K2002GCD03](#)