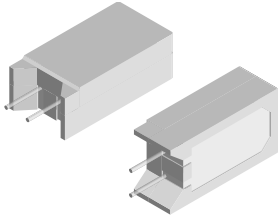


Wirewound/Metal Film Resistors, Commercial Power, Vertical Mount



FEATURES

- Space saving
- Direct mounting on printed circuit board
- Meets or exceeds requirements of EIA-Standard RS-344
- High power to size ratio
- Special inorganic potting compound and ceramic case provide high thermal conductivity in a fireproof package



RoHS*
COMPLIANT

STANDARD ELECTRICAL SPECIFICATIONS					
GLOBAL MODEL	HISTORICAL MODEL	POWER RATING $P_{70^\circ\text{C}}$ W	TOLERANCE ± %	RESISTANCE RANGE Ω	WEIGHT (typical) g
CPCL02	CPCL-2	2	5, 10	0.01 - 0.10	3.5
CPCC02	CPCC-2	2	5, 10	0.1 - 500	3.5
CPCP02	CPCP-2	2	1, 5	0.1 - 4K	3.5
CPCF02	CPCF-2	2	1, 5, 10	501 - 150K	3.5
CPCL03	CPCL-3	3	5, 10	0.01 - 0.10	5.5
CPCC03	CPCC-3	3	5, 10	0.1 - 800	5.5
CPCP03	CPCP-3	3	1, 5	0.1 - 5K	5.5
CPCF03	CPCF-3	3	1, 5, 10	801 - 150K	5.5
CPCL05	CPCL-5	5	5, 10	0.01 - 0.10	6.9
CPCC05	CPCC-5	5	5, 10	0.1 - 800	6.9
CPCP05	CPCP-5	5	1, 5	0.1 - 5K	6.9
CPCF05	CPCF-5	5	1, 5, 10	801 - 150K	6.9
CPCP07	CPCP-7	7	3, 5, 10	0.1 - 430	9.2
CPCL10	CPCL-10	10	5, 10	0.01 - 0.10	14.3
CPCC10	CPCC-10	10	5, 10	0.1 - 1.5K	14.3
CPCP10	CPCP-10	10	1, 5	0.1 - 8K	14.3

Note

- Non-inductively wound types are available on the CPCP series signified by a 1 in the special character on part number such as CPCC0510R00FB321. Max. resistance value will be 1/2 of the standard CPCP.

TECHNICAL SPECIFICATIONS					
PARAMETER	UNIT	CPCLxx	CPCCxx	CPCPxx	CPCFxx
Temperature Coefficient	ppm/°C	0.01 Ω - 0.049 Ω = ± 400 0.05 Ω - 0.1 Ω = ± 100	0.1 Ω - 0.99 Ω = ± 600 1.0 Ω and above = ± 300	0.1 Ω - 0.99 Ω = ± 90 1.0 Ω - 9.9 Ω = ± 50 10 Ω and above = ± 20	± 50 all values
Short Time Overload	-	5 x rated power for 5 s			
Maximum Working Voltage	V	$(P \times R)^{1/2}$			
Operating Temperature Range	°C	- 65 to + 275			- 65 to + 225
Terminal Strength	lb	10 minimum			
Dielectric Withstanding Voltage	V _{AC}	1000			

GLOBAL PART NUMBER INFORMATION					
New Global Part Numbering: CPCC0515R00JB32 (preferred part number format)					
C	P	C	C	0	5
1	5	R	0	0	J
B	3	2			
GLOBAL MODEL (See Standard Electrical Specifications Global Model column for options)	VALUE R = Decimal K = Thousand R1500 = 0.15 Ω 1K500 = 1500 Ω	TOLERANCE F = ± 1.0 % H = ± 3.0 % J = ± 5.0 % K = ± 10.0 %	PACKAGING E32 = Lead (Pb)-free two layer bulk E01 = Lead (Pb)-free skin pack B32 = Tin/lead two layer bulk J01 = Tin/lead skin pack	SPECIAL (Dash Number) (up to 3 digits) From 1 - 999 as applicable	
Historical Part Number Example: CPCC-5 15 Ω 5 % B32 (will continue to be accepted for tin/lead product only)					
CPCC-5	15 Ω	5 %	B32		
HISTORICAL MODEL	RESISTANCE VALUE	TOLERANCE CODE	PACKAGING		

* Pb containing terminations are not RoHS compliant, exemptions may apply

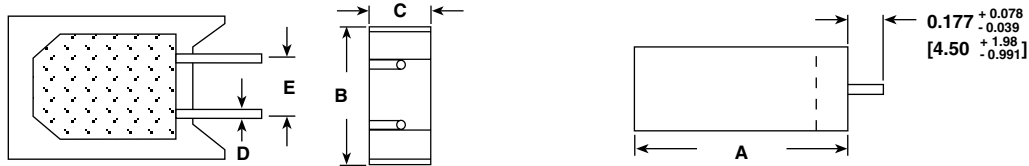


CPCL, CPCC, CPCP, CPCF

Wirewound/Metal Film Resistors, Commercial Power,
Vertical Mount

Vishay Dale

DIMENSIONS in inches [millimeters]



GLOBAL MODEL	DIMENSIONS in inches [millimeters]				
	A ± 0.031 [0.794]	B ± 0.031 [0.794]	C + 0.043 [1.09] - 0.012 [0.305]	D ± 0.005 [0.127]	E ± 0.040 [1.02]
CPCL02 CPCC02 CPCP02 CPCF02	0.807 [20.50]	0.433 [11.00]	0.276 [7.01]	0.032 [0.813]	0.197 [5.00]
CPCL03 CPCC03 CPCP03 CPCF03	0.984 [24.99]	0.472 [11.99]	0.315 [8.00]	0.032 [0.813]	0.197 [5.00]
CPCL05 CPCC05 CPCP05 CPCF05	1.003 [25.48]	0.512 [13.00]	0.354 [8.99]	0.032 [0.813]	0.197 [5.00]
CPCP07	1.535 ± 0.059 [39.00 ± 1.50]	0.512 ± 0.043 [13.00 ± 1.10]	0.354 ± 0.043 [9.00 ± 1.10]	0.032 ± 0.005 [0.813 ± 0.127]	0.197 + 0.079/-0.039 [5.00 + 2.0/- 1.0]
CPCL10 CPCP10	1.372 [34.85]	0.633 [16.08]	0.485 [12.32]	0.040 [1.02]	0.290 [7.37]
CPCC10				0.036 [0.914]	

MATERIAL SPECIFICATIONS

Part Marking: DALE, model, wattage, value, tolerance, date code

CPCL: Element: Self-supporting copper-nickel alloy or nickel-chrome alloy, depending on resistance value

Body: Steatite ceramic case with inorganic potting compound

Terminals: Tinned copper

CPCC: Element: Copper-nickel alloy or nickel-chrome alloy, depending on resistance value

Core: Woven fiberglass

Body: Steatite ceramic case with inorganic potting compound

End Caps: Tin plated steel

Terminals: Tinned copper

CPCP: Element: Copper-nickel alloy or nickel-chrome alloy, depending on resistance value

Core: Ceramic

Body: Steatite ceramic case with inorganic potting compound

End Caps: Stainless steel (CPCP07 is tin plated CRS)

Terminals: Tinned Copperweld® (CPCP07 is tin plated copper)

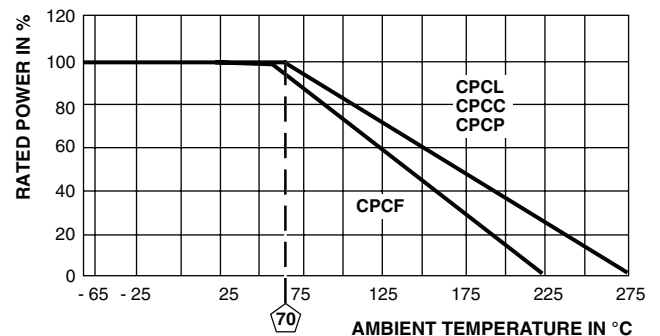
CPCF: Element: Metal film - nickel-chrome alloy

Core: Alumina ceramic

Body: Steatite ceramic case with inorganic potting compound

End Caps: Brass alloy

Terminals: Solder-coated copper



Derating

PERFORMANCE			
TEST	CONDITIONS OF TEST	CPCP TEST LIMITS	CPCC, CPCL, CPCF TEST LIMITS
Thermal Shock	- 55 °C to + 275 °C, 5 cycles, 30 min dwell time	± (2.0 % + 0.05 Ω) ΔR	± (5.0 % + 0.05 Ω) ΔR
Short Time Overload	5 x rated power for 5 s	± (2.0 % + 0.05 Ω) ΔR	± (4.0 % + 0.05 Ω) ΔR
Dielectric Withstanding Voltage	1000 V _{rms} for 1 min	± (0.1 % + 0.05 Ω) ΔR	± (2.0 % + 0.05 Ω) ΔR
Low Temperature Storage	- 65 °C, full rated working voltage for 45 min	± (2.0 % + 0.05 Ω) ΔR	± (3.0 % + 0.05 Ω) ΔR
Bias Humidity	75 °C, 90 % - 100 % RH, 240 h	± (2.0 % + 0.05 Ω) ΔR	± (5.0 % + 0.05 Ω) ΔR
Load Life	1000 h at rated power, + 40 °C, 1.5 h "ON", 0.5 h "OFF"	± (5.0 % + 0.05 Ω) ΔR	± (5.0 % + 0.05 Ω) ΔR
Terminal Strength	5 to 10 s 10 pound pull test	± (1.0 % + 0.05 Ω) ΔR	± (1.0 % + 0.05 Ω) ΔR
Resistance to Solder Heat	Terminal immersed 3.5 s in molten solder up to body	± (1.0 % + 0.05 Ω) ΔR	± (4.0 % + 0.05 Ω) ΔR



Disclaimer

All product specifications and data are subject to change without notice.

Vishay Intertechnology, Inc., its affiliates, agents, and employees, and all persons acting on its or their behalf (collectively, "Vishay"), disclaim any and all liability for any errors, inaccuracies or incompleteness contained herein or in any other disclosure relating to any product.

Vishay disclaims any and all liability arising out of the use or application of any product described herein or of any information provided herein to the maximum extent permitted by law. The product specifications do not expand or otherwise modify Vishay's terms and conditions of purchase, including but not limited to the warranty expressed therein, which apply to these products.

No license, express or implied, by estoppel or otherwise, to any intellectual property rights is granted by this document or by any conduct of Vishay.

The products shown herein are not designed for use in medical, life-saving, or life-sustaining applications unless otherwise expressly indicated. Customers using or selling Vishay products not expressly indicated for use in such applications do so entirely at their own risk and agree to fully indemnify Vishay for any damages arising or resulting from such use or sale. Please contact authorized Vishay personnel to obtain written terms and conditions regarding products designed for such applications.

Product names and markings noted herein may be trademarks of their respective owners.

X-ON Electronics

Largest Supplier of Electrical and Electronic Components

Click to view similar products for [Wirewound Resistors - Through Hole category](#):

Click to view products by [Vishay manufacturer](#):

Other Similar products are found below :

[75822-2K4](#) [90J56R](#) [PW10-39R-5%](#) [ALSR1-20](#) [EP3WS47RJ](#) [RWR81S12R4FRB12](#) [RWR81SR511FRB12](#) [RWR81SR619FRBSL](#)
[RWR89S9310FPB12](#) [27J1K0](#) [93J62RE](#) [AC10000002208JAB00](#) [1HJ-25](#) [FSQ5WR47J](#) [25J39K](#) [25J5R0-B](#) [25W1D0](#) [272-303-JBW](#) [280-](#)
[PRM5-150-RC](#) [CP0005270R0JE1491](#) [CPCC0510R00JE32](#) [CPCC051R000JB31](#) [CPW052K500JE143](#) [CPW05700R0JE143](#) [C1010RJL](#)
[CA000210R00JE14](#) [VPR5F1500](#) [RS02B887R0FE73](#) [RWR74SR604FRB12](#) [RWR84S1001FRB12](#) [RWR84S20R0FSBSL](#)
[RWR89S6190FSB12](#) [CPW055R000JB143](#) [ULW5-39R0JT075](#) [W31-R47JA1](#) [W31-R047JA1](#) [VP25K-120](#) [VC3D900](#) [ULW5-68RJT075](#)
[65888-3R3](#) [CB5JB10R0](#) [CPW151K500JE313](#) [RWR80N3400FSB12](#) [RWR81S1000FRB12](#) [RWR81S1000FSB12](#) [RWR89S6R81FRB12](#)
[RWR89N30R1FRB12](#) [RWR81S4R99FPB12](#) [RWR74S4R02FRRSL](#) [WW1JT33R0](#)