



## Surface Mount Multilayer Ceramic Chip Capacitor Solutions for High Voltage Applications



### FEATURES

- High voltage breakdown compared to standard design
- High reliability serial electrode design
- Polymer termination available for intensive, board flex requirements
- Protective surface coating may be required to prevent surface arcing
- Excellent reliability and thermal shock performance
- Wet build process
- Reliable Noble Metal Electrode (NME) system
- Material categorization: for definitions of compliance please see [www.vishay.com/doc?99912](http://www.vishay.com/doc?99912)



**RoHS**  
COMPLIANT  
HALOGEN  
**FREE**  
**GREEN**  
(5-2008)

### APPLICATIONS

- Input filter capacitors
- Output filter capacitors
- Snubber capacitors reduce MOSFET voltage spikes
- Filtering for switching power supplies
- For lighting and other AC applications please contact: [mlcc@vishay.com](mailto:mlcc@vishay.com)

### ELECTRICAL SPECIFICATIONS

COG (NP0)
<p><b>GENERAL SPECIFICATION</b></p> <p><b>Note</b> Electrical characteristics at +25 °C unless otherwise specified</p> <p><b>Operating Temperature:</b> -55 °C to +125 °C</p> <p><b>Capacitance Range:</b> 10 pF to 3.3 nF</p> <p><b>Voltage Range:</b> 500 V<sub>DC</sub> to 5000 V<sub>DC</sub></p> <p><b>Temperature Coefficient of Capacitance (TCC):</b> 0 ppm/°C ± 30 ppm/°C from -55 °C to +125 °C</p> <p><b>Dissipation Factor (DF):</b> 0.1 % maximum at 1.0 V<sub>RMS</sub> and 1 MHz for value ≤ 1000 pF 0.1 % maximum at 1.0 V<sub>RMS</sub> and 1 kHz for values &gt; 1000 pF</p> <p><b>Insulating Resistance:</b> at +25 °C 100 000 MΩ min. or 1000 ΩF whichever is less at +125 °C 10 000 MΩ min. or 100 ΩF whichever is less</p> <p><b>Aging Rate:</b> 0 % maximum per decade</p> <p><b>Dielectric Strength Test:</b> applied test voltages 120 % of rated voltage</p>

X7R
<p><b>GENERAL SPECIFICATION</b></p> <p><b>Note</b> Electrical characteristics at +25 °C unless otherwise specified</p> <p><b>Operating Temperature:</b> -55 °C to +125 °C</p> <p><b>Capacitance Range:</b> 47 pF to 560 nF</p> <p><b>Voltage Range:</b> 500 V<sub>DC</sub> to 8000 V<sub>DC</sub></p> <p><b>Temperature Coefficient of Capacitance (TCC):</b> ± 15 % from -55 °C to +125 °C, with 0 V<sub>DC</sub> applied</p> <p><b>Dissipation Factor (DF):</b> 2.5 % maximum at 1.0 V<sub>RMS</sub> and 1 kHz</p> <p><b>Insulating Resistance:</b> at +25 °C 100 000 MΩ min. or 1000 ΩF whichever is less at +125 °C 10 000 MΩ min. or 100 ΩF whichever is less</p> <p><b>Aging Rate:</b> 1 % maximum per decade</p> <p><b>Dielectric Strength Test:</b> applied test voltages min. 120 % of rated voltage</p>



QUICK REFERENCE DATA				
DIELECTRIC	CASE	MAXIMUM VOLTAGE (V)	CAPACITANCE	
			MINIMUM	MAXIMUM
C0G (NP0)	1206	1500	10 pF	120 pF
	1210	2000	10 pF	120 pF
	1808	3000	27 pF	220 pF
	1812	5000	15 pF	1.8 nF
	1825	5000	15 pF	2.2 nF
	2220	5000	33 pF	2.2 nF
	2225	5000	47 pF	3.3 nF
X7R	1206	2000	270 pF	4.7 nF
	1210	2000	390 pF	10 nF
	1808	6000	47 pF	18 nF
	1812	6000	150 pF	27 nF
	1825	4000	330 pF	56 nF
	2220	6000	330 pF	82 nF
	2225	6000	470 pF	100 nF
	3040	1500	33 nF	220 nF
	3640	8000	470 pF	390 nF
4044	1500	100 nF	560 nF	

**Note**

- Detail ratings see “Selection Chart”
- For special high voltage applications including Open Mode Design and ArcGuard please consult series datasheet

ORDERING INFORMATION								
HV2220	Y	152	K	X	M	A	T	HV <sup>(2)</sup>
CASE CODE	DIELECTRIC	CAPACITANCE NOMINAL CODE	CAPACITANCE TOLERANCE	TERMINATION	DC VOLTAGE RATING <sup>(1)</sup>	MARKING	PACKAGING	PROCESS CODE
1206 1210 1808 1812 1825 2220 2225 3040 3640 4044	Y = X7R A = C0G (NP0)	Expressed in picofarads (pF). The first two digits are significant, the third is a multiplier. <b>Examples</b> 152 = 1500 pF	C0G (NP0): F = ± 1 % G = ± 2 % J = ± 5 % K = ± 10 %  X7R: J = ± 5 % K = ± 10 % M = ± 20 %	X = Ni barrier 100 % tin plated matte finish B = polymer 100 % tin plated matte finish	E = 500 V L = 630 V G = 1000 V R = 1500 V F = 2000 V H = 3000 V V = 4000 V M = 5000 V 6 = 6000 V 8 = 8000 V	A = unmarked	T = 7" reel / plastic tape R = 11 1/4" / 13" reel / plastic tape	HV = high voltage

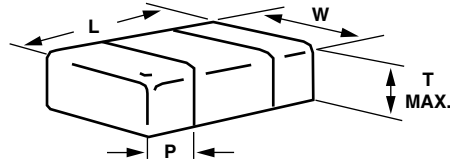
**Notes**

- (1) DC voltage rating should not be exceeded in application. Other application factors may affect the MLCC performance. Consult for questions: [mlcc@vishay.com](mailto:mlcc@vishay.com)
- (2) Process code with 2 digits has to be added

ENVIRONMENTAL STATUS			
TERMINATION CODE	TERMINATION DESCRIPTION	RoHS COMPLIANT	VISHAY GREEN
X	Ni barrier 100 % tin plated matte finish	Yes	Yes
B	Polymer layer, 100 % tin plated matte finish	Yes	Yes



**DIMENSIONS** in inches (millimeters)



CASE CODE	STYLE	LENGTH (L)	WIDTH (W)	MAXIMUM THICKNESS (T)	TERMINATION PAD (P)	
					MINIMUM	MAXIMUM
1206	HV1206	0.126 ± 0.010 (3.20 ± 0.25)	0.063 ± 0.010 (1.60 ± 0.25)	0.067 (1.70)	0.010 (0.25)	0.030 (0.76)
1210	HV1210	0.126 ± 0.010 (3.20 ± 0.25)	0.098 ± 0.010 (2.50 ± 0.25)	0.067 (1.70)	0.010 (0.25)	0.030 (0.76)
1808	HV1808	0.180 ± 0.012 (4.57 ± 0.30)	0.080 ± 0.010 (2.03 ± 0.25)	0.086 (2.18)	0.010 (0.25)	0.035 (0.90)
1812	HV1812	0.177 ± 0.012 (4.50 ± 0.30)	0.126 ± 0.008 (3.20 ± 0.20)	0.106 (2.70)	0.010 (0.25)	0.035 (0.90)
1825	HV1825	0.177 ± 0.012 (4.50 ± 0.30)	0.252 ± 0.010 (6.40 ± 0.25)	0.106 (2.70)	0.010 (0.25)	0.035 (0.90)
2220	HV2220	0.220 ± 0.010 (5.59 ± 0.25)	0.200 ± 0.010 (5.08 ± 0.25)	0.106 (2.70)	0.010 (0.25)	0.037 (0.95)
2225	HV2225	0.220 ± 0.010 (5.59 ± 0.25)	0.250 ± 0.010 (6.35 ± 0.25)	0.106 (2.70)	0.010 (0.25)	0.037 (0.95)
3040	HV3040	0.300 ± 0.015 (7.62 ± 0.38)	0.400 ± 0.015 (10.20 ± 0.38)	0.100 (2.54)	0.010 (0.25)	0.039 (1.00)
3640	HV3640	0.360 ± 0.015 (9.14 ± 0.38)	0.400 ± 0.015 (10.20 ± 0.38)	0.130 (3.30)	0.010 (0.25)	0.037 (0.95)
4044	HV4044	0.400 ± 0.015 (10.16 ± 0.38)	0.440 ± 0.015 (11.17 ± 0.38)	0.120 (3.05)	0.020 (0.50)	0.040 (1.00)

**Note**

- Polymer layer (B termination) have increased dimensions: length 0.006" (0.15 mm)



<b>SELECTION CHART</b>															
DIELECTRIC		C0G (NP0)													
STYLE		HV1206 <sup>(1)</sup>				HV1210 <sup>(1)</sup>					HV1808 <sup>(1)</sup>				
EIA CODE		1206				1210					1808				
VOLTAGE (V <sub>DC</sub> )		500	630	1000	1500	500	630	1000	1500	2000	500	630	1000	2000	3000
VOLTAGE CODE		E	L	G	R	E	L	G	R	F	E	L	G	F	H
CAP. CODE	CAP.														
100	10 pF	•	•	•	•	•	•	•	•	•					
120	12 pF	•	•	•	•	•	•	•	•	•					
150	15 pF	•	•	•	•	•	•	•	•	•					
180	18 pF	•	•	•	•	•	•	•	•	•					
220	22 pF	•	•	•	•	•	•	•	•	•					
270	27 pF	•	•	•	•	•	•	•	•	•	•	•	•	•	•
330	33 pF	•	•	•	•	•	•	•	•	•	•	•	•	•	•
390	39 pF	•	•	•	•	•	•	•	•	•	•	•	•	•	•
470	47 pF	•	•	•	•	•	•	•	•	•	•	•	•	•	•
560	56 pF	•	•	•	•	•	•	•	•	•	•	•	•	•	•
680	68 pF	•	•	•	•	•	•	•	•	•	•	•	•	•	•
820	82 pF	•	•	•	•	•	•	•	•	•	•	•	•	•	•
101	100 pF	•	•	•	•	•	•	•	•	•	•	•	•	•	•
121	120 pF	•	•	•	•	•	•	•	•	•	•	•	•	•	•
151	150 pF										•	•	•	•	
181	180 pF										•	•	•	•	
221	220 pF										•	•	•	•	
271	270 pF														
331	330 pF														
391	390 pF														
471	470 pF														
561	560 pF														
681	680 pF														
821	820 pF														
102	1.0 nF														
122	1.2 nF														
152	1.5 nF														
182	1.8 nF														
222	2.2 nF														
272	2.7 nF														
332	3.3 nF														
392	3.9 nF														
472	4.7 nF														

**Notes**

- (1) See soldering recommendations within this data book, or visit: [www.vishay.com/doc?45034](http://www.vishay.com/doc?45034)
- (2) Rating use lower packaging quantity, see "Standard Packaging Quantities" chart



SELECTION CHART																				
DIELECTRIC		COG (NP0)																		
STYLE		HV1812 <sup>(1)</sup>						HV1825 <sup>(1)</sup>						HV2220 <sup>(1)</sup>			HV2225 <sup>(1)</sup>			
EIA CODE		1812						1825						2220			2225			
VOLTAGE (V <sub>DC</sub> )		500	630	1000	2000	3000	4000	5000	500	630	1000	3000	4000	5000	3000	4000	5000	3000	4000	5000
VOLTAGE CODE		E	L	G	F	H	V	M	E	L	G	H	V	M	H	V	M	H	V	M
CAP. CODE	CAP.																			
100	10 pF																			
120	12 pF																			
150	15 pF	•	•	•	•	•	•	•	•	•	•									
180	18 pF	•	•	•	•	•	•	•	•	•	•									
220	22 pF	•	•	•	•	•	•	•	•	•	•									
270	27 pF	•	•	•	•	•	•	•	•	•	•									
330	33 pF	•	•	•	•	•	•	•	•	•	•	•	•	•	•	•				
390	39 pF	•	•	•	•	•	•	•	•	•	•	•	•	•	•	•	•			
470	47 pF	•	•	•	•	•	•	•	•	•	•	•	•	•	•	•	•	•	•	•
560	56 pF	•	•	•	•	•	•	•	•	•	•	•	•	•	•	•	•	•	•	•
680	68 pF	•	•	•	•	•	•	•	•	•	•	•	•	•	•	•	•	•	•	•
820	82 pF	•	•	•	•	•	•	•	•	•	•	•	•	•	•	•	•	•	•	•
101	100 pF	•	•	•	•	•	•	•	•	•	•	•	•	•	•	•	•	•	•	•
121	120 pF	•	•	•	•	•	•	•	•	•	•	•	•	•	•	•	•	•	•	•
151	150 pF	•	•	•	•	•	•	•	•	•	•	•	•	•	•	•	•	•	•	•
181	180 pF	•	•	•	•	•	•	•	•	•	•	•	•	•	•	•	•	•	•	•
221	220 pF	•	•	•	•	•	•	•	•	•	•	•	•	•	•	•	•	•	•	•
271	270 pF	•	•	•	•	•	•		•	•	•	•	•	•	•	•	•	•	•	•
331	330 pF	•	•	•	•	•			•	•	•	•	•	•	•	•	•	•	•	•
391	390 pF	•	•	•	•	•			•	•	•	•	•	•	•	•	•	•	•	•
471	470 pF	•	•	•	•	•			•	•	•	•	•	•	•	•	•	•	•	•
561	560 pF	•	•	•	•	•			•	•	•	•	•	•	•	•	•	•	•	•
681	680 pF	•	•	•	•	•			•	•	•	•	•		•	•		•	•	•
821	820 pF	•	•	•	•	•			•	•	•	•			•			•	•	•
102	1.0 nF	•	•	•	•	•			•	•	•	•			•			•	•	
122	1.2 nF	•	•	•					•	•	•	•			•			•		
152	1.5 nF	•	•	•					•	•	•	•			•			•		
182	1.8 nF	•	•	•					•	•	•	•			•			•		
222	2.2 nF								•	•	•	•			•			•		
272	2.7 nF																	•		
332	3.3 nF																	•		
392	3.9 nF																			
472	4.7 nF																			

Notes

- (1) See soldering recommendations within this data book, or visit: [www.vishay.com/doc?45034](http://www.vishay.com/doc?45034)
- (2) Rating use lower packaging quantity, see "Standard Packaging Quantities" chart



<b>SELECTION CHART</b>																		
DIELECTRIC		X7R																
STYLE		HV1206 <sup>(1)</sup>					HV1210 <sup>(1)</sup>					HV1808 <sup>(1)</sup>						
EIA CODE		1206					1210					1808						
VOLTAGE (V <sub>DC</sub> )		500	630	1000	1500	2000	500	630	1000	1500	2000	500	630	1000	1500	2000	3000	6000
VOLTAGE CODE		E	L	G	R	F	E	L	G	R	F	E	L	G	R	F	H	6
CAP. CODE	CAP.																	
470	47 pF											•	•	•	•	•	•	•
560	56 pF											•	•	•	•	•	•	•
680	68 pF											•	•	•	•	•	•	•
820	82 pF											•	•	•	•	•	•	•
101	100 pF											•	•	•	•	•	•	•
121	120 pF											•	•	•	•	•	•	•
151	150 pF											•	•	•	•	•	•	•
181	180 pF											•	•	•	•	•	•	•
221	220 pF											•	•	•	•	•	•	•
271	270 pF	•	•	•	•	•						•	•	•	•	•	•	•
331	330 pF	•	•	•	•	•						•	•	•	•	•	•	•
391	390 pF	•	•	•	•	•	•	•	•	•		•	•	•	•	•	•	•
471	470 pF	•	•	•	•	•	•	•	•	•		•	•	•	•	•	•	•
561	560 pF	•	•	•	•	•	•	•	•	•		•	•	•	•	•	•	•
681	680 pF	•	•	•	•	•	•	•	•	•		•	•	•	•	•	•	•
751	750 pF																	
821	820 pF	•	•	•	•	•	•	•	•	•		•	•	•	•	•	•	•
102	1.0 nF	•	•	•	•	•	•	•	•	•		•	•	•	•	•	•	•
122	1.2 nF	•	•	•	•		•	•	•	•		•	•	•	•	•	•	•
152	1.5 nF	•	•	•	•		•	•	•	•		•	•	•	•	•	•	•
182	1.8 nF	•	•	•	•		•	•	•	•		•	•	•	•	•	•	•
222	2.2 nF	•	•	•			•	•	•	•		•	•	•	•	•	•	•
272	2.7 nF	•	•	•			•	•	•	•		•	•	•	•	•	•	•
332	3.3 nF	•	•	•			•	•	•	•		•	•	•	•	•	•	•
392	3.9 nF	•	•	•			•	•	•	•		•	•	•	•	•	•	•
472	4.7 nF	•	•	•			•	•	•	•		•	•	•	•	•	•	•
562	5.6 nF						•	•	•			•	•	•	•	•	•	•
682	6.8 nF						•	•	•			•	•	•	•	•	•	•
822	8.2 nF						•	•				•	•	•				
103	10 nF						•	•				•	•	•				
123	12 nF											•	•	•				
153	15 nF											•	•	•				
183	18 nF											•	•	•				

**Notes**

<sup>(1)</sup> See soldering recommendations within this data book, or visit: [www.vishay.com/doc?45034](http://www.vishay.com/doc?45034)

<sup>(2)</sup> Rating use lower packaging quantity, see "Standard Packaging Quantities" chart



SELECTION CHART																	
DIELECTRIC		X7R															
STYLE		HV1812 <sup>(1)</sup>									HV1825 <sup>(1)</sup>						
EIA CODE		1812									1825						
VOLTAGE (V <sub>DC</sub> )		500	630	1000	1500	2000	3000	4000	5000	6000	500	630	1000	1500	2000	3000	4000
VOLTAGE CODE		E	L	G	R	F	H	V	M	6	E	L	G	R	F	H	V
CAP. CODE	CAP.																
101	100 pF																
121	120 pF																
151	150 pF	•	•	•	•	•	•	•	•	•							
181	180 pF	•	•	•	•	•	•	•	•	•							
221	220 pF	•	•	•	•	•	•	•	•	•							
271	270 pF	•	•	•	•	•	•	•	•	•							
331	330 pF	•	•	•	•	•	•	•	•	•	•	•	•	•	•	•	•
391	390 pF	•	•	•	•	•	•	•	•	•	•	•	•	•	•	•	•
471	470 pF	•	•	•	•	•	•	•	•	•	•	•	•	•	•	•	•
561	560 pF	•	•	•	•	•	•	•	•	•	•	•	•	•	•	•	•
681	680 pF	•	•	•	•	•	•	•	•	•	•	•	•	•	•	•	•
751	750 pF	•	•	•	•	•	•	•	•	•							
821	820 pF	•	•	•	•	•	•	•	•		•	•	•	•	•	•	•
102	1.0 nF	•	•	•	•	•	•	•			•	•	•	•	•	•	•
122	1.2 nF	•	•	•	•	•	•	•			•	•	•	•	•	•	•
152	1.5 nF	•	•	•	•	•	•	• <sup>(2)</sup>			•	•	•	•	•	•	•
182	1.8 nF	•	•	•	•	•	•				•	•	•	•	•	•	•
222	2.2 nF	•	•	•	•	•	•				•	•	•	•	•	•	•
272	2.7 nF	•	•	•	•	•	• <sup>(2)</sup>				•	•	•	•	•	•	•
332	3.3 nF	•	•	•	•	•	• <sup>(2)</sup>				•	•	•	•	•	•	•
392	3.9 nF	•	•	•	•	•	• <sup>(2)</sup>				•	•	•	•	•	•	•
472	4.7 nF	•	•	•	•	•					•	•	•	•	•	•	•
562	5.6 nF	•	•	•	•	•					•	•	•	•	•	• <sup>(2)</sup>	
682	6.8 nF	•	•	•	•	•					•	•	•	•	•	• <sup>(2)</sup>	
822	8.2 nF	•	•	•	•						•	•	•	•	•	• <sup>(2)</sup>	
103	10 nF	•	•	•	•						•	•	•	•	•	• <sup>(2)</sup>	
123	12 nF	•	•	•	•						•	•	•	•	•		
153	15 nF	•	•	•	•						•	•	•	•	•		
183	18 nF	•	•	•	•						•	•	•	•	•		
223	22 nF	•	•	•							•	•	•	•	•		
273	27 nF	•	•	•							•	•	•	•	•		
333	33 nF										•	•	•	•			
393	39 nF										•	•	•	•			
473	47 nF										•	•	•				
563	56 nF										•	•	•				
683	68 nF																
823	82 nF																

Notes

- (1) See soldering recommendations within this data book, or visit: [www.vishay.com/doc?45034](http://www.vishay.com/doc?45034)
- (2) Rating use lower packaging quantity, see "Standard Packaging Quantities" chart



SELECTION CHART																			
DIELECTRIC		X7R																	
STYLE		HV2220 <sup>(1)</sup>									HV2225 <sup>(1)</sup>								
EIA CODE		2220									2225								
VOLTAGE (V <sub>DC</sub> )		500	630	1000	1500	2000	3000	4000	5000	6000	500	630	1000	1500	2000	3000	4000	5000	6000
VOLTAGE CODE		E	L	G	R	F	H	V	M	6	E	L	G	R	F	H	V	M	6
CAP. CODE	CAP.																		
101	100 pF																		
121	120 pF																		
151	150 pF																		
181	180 pF																		
221	220 pF																		
271	270 pF																		
331	330 pF																		
391	390 pF	•	•	•	•	•	•	•	•										
471	470 pF	•	•	•	•	•	•	•	•	•	•	•	•	•	•	•	•	•	•
561	560 pF	•	•	•	•	•	•	•	•	•	•	•	•	•	•	•	•	•	•
681	680 pF	•	•	•	•	•	•	•	•	•	•	•	•	•	•	•	•	•	•
751	750 pF	•	•	•	•	•	•	•	•	•	•	•	•	•	•	•	•	•	•
821	820 pF	•	•	•	•	•	•	•	•	•	•	•	•	•	•	•	•	•	•
102	1.0 nF	•	•	•	•	•	•	•	•	•	•	•	•	•	•	•	•	•	•
122	1.2 nF	•	•	•	•	•	•	•	•	•	•	•	•	•	•	•	•	•	•
152	1.5 nF	•	•	•	•	•	•	•	•	•	•	•	•	•	•	•	•	•	•
182	1.8 nF	•	•	•	•	•	•	•	•	•	•	•	•	•	•	•	•	•	•
222	2.2 nF	•	•	•	•	•	•	•	•	•	•	•	•	•	•	•	•	•	•
272	2.7 nF	•	•	•	•	•	•	•	•										
332	3.3 nF	•	•	•	•	•	•	•	•										
392	3.9 nF	•	•	•	•	•	•												
472	4.7 nF	•	•	•	•	•	•												
562	5.6 nF	•	•	•	•	•	• <sup>(2)</sup>												
682	6.8 nF	•	•	•	•	•	• <sup>(2)</sup>												
822	8.2 nF	•	•	•	•	•	• <sup>(2)</sup>												
103	10 nF	•	•	•	•	•	• <sup>(2)</sup>												
123	12 nF	•	•	•	•	•													
153	15 nF	•	•	•	•	•													
183	18 nF	•	•	•	•	•													
223	22 nF	•	•	•	•	•													
273	27 nF	•	•	•	•	•													
333	33 nF	•	•	•															
393	39 nF	•	•	•															
473	47 nF	•	•	•															
563	56 nF	•	•	•															
683	68 nF	•	•	•															
823	82 nF	•	•	•															
104	100 nF																		

Notes

- (1) See soldering recommendations within this data book, or visit: [www.vishay.com/doc?45034](http://www.vishay.com/doc?45034)
- (2) Rating use lower packaging quantity, see "Standard Packaging Quantities" chart





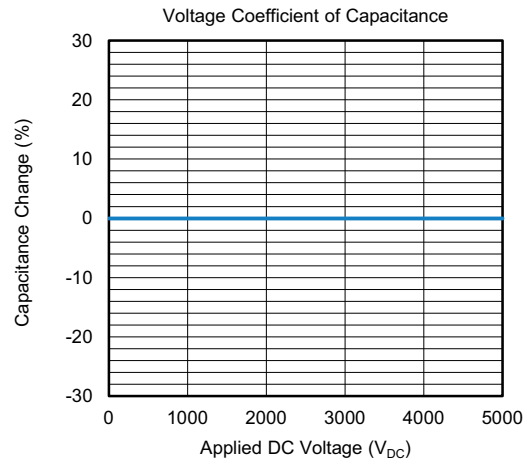
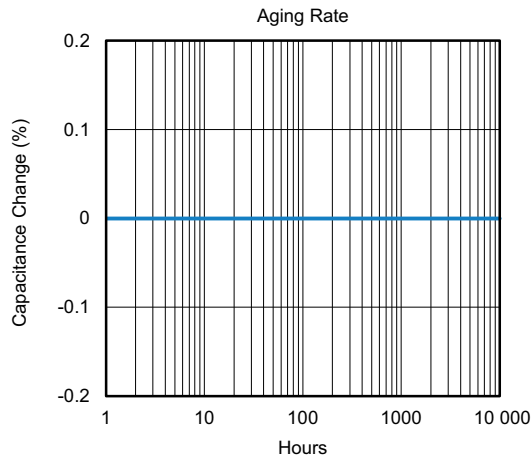
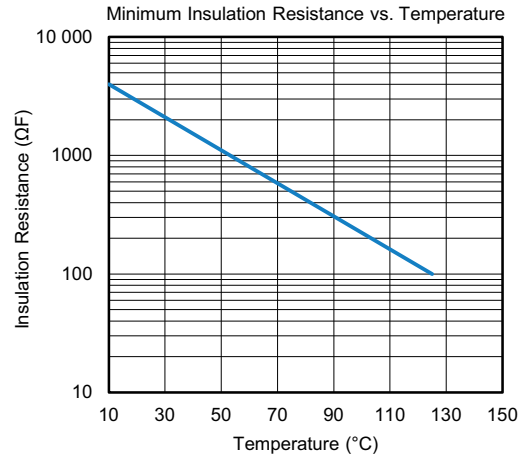
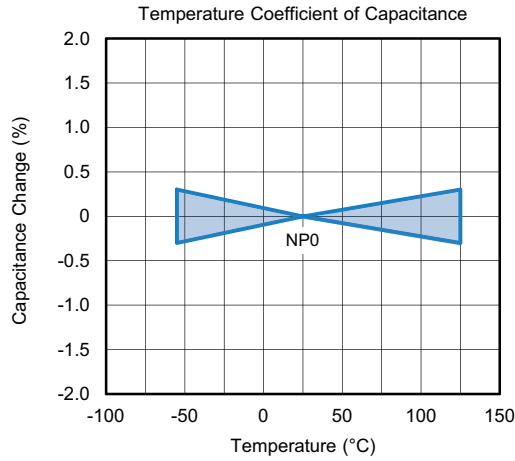
SELECTION CHART															
DIELECTRIC		X7R													
STYLE		HV3040 <sup>(1)</sup>				HV3640 <sup>(1)</sup>						HV4044 <sup>(1)</sup>			
EIA CODE		3040				3640						4044			
VOLTAGE (V <sub>DC</sub> )		500	630	1000	1500	500	630	1000	1500	6000	8000	500	630	1000	1500
VOLTAGE CODE		E	L	G	R	E	L	G	R	6	8	E	L	G	R
CAP. CODE	CAP.														
101	100 pF														
121	120 pF														
151	150 pF														
181	180 pF														
221	220 pF														
271	270 pF														
331	330 pF														
391	390 pF														
471	470 pF					•	•	•	•	•	•				
561	560 pF					•	•	•	•	•	•				
681	680 pF					•	•	•	•	•	•				
751	750 pF					•	•	•	•	•	•				
821	820 pF					•	•	•	•	•	•				
102	1.0 nF					•	•	•	•	•	•				
122	1.2 nF					•	•	•	•	•	•				
152	1.5 nF					•	•	•	•	•	•				
182	1.8 nF					•	•	•	•	•	•				
222	2.2 nF					•	•	•	•	•	•				
272	2.7 nF					•	•	•	•	•	•				
332	3.3 nF					•	•	•	•	•	•				
392	3.9 nF					•	•	•	•	•	•				
472	4.7 nF					•	•	•	•	•	•				
562	5.6 nF					•	•	•	•	•	•				
682	6.8 nF														
822	8.2 nF														
103	10 nF														
123	12 nF														
153	15 nF														
183	18 nF														
223	22 nF														
273	27 nF														
333	33 nF	•	•	•	•										
393	39 nF	•	•	•	•										
473	47 nF	•	•	•	•	•	•	•	•						
563	56 nF	•	•	•	•	•	•	•	•						
683	68 nF	•	•	•	•	•	•	•	•						
823	82 nF	•	•	•	•	•	•	•	•						
104	100 nF	•	•	•	•	•	•	•	•			•	•	•	•
124	120 nF	•	•	•	•	•	•	•	•			•	•	•	•
154	150 nF	•	•	•	•	•	•	•	•			•	•	•	•
184	180 nF	•	•	•	•	•	•	•	•			•	•	•	•
224	220 nF	•	•	•	•	•	•	•	•			•	•	•	•
274	270 nF					•	•	•	•			•	•	•	•
334	330 nF					•	•	•	•			•	•	•	•
394	390 nF					•	•	•	•			•	•	•	•
474	470 nF											•	•	•	•
564	560 nF											•	•	•	•

Notes

- (1) See soldering recommendations within this data book, or visit: [www.vishay.com/doc?45034](http://www.vishay.com/doc?45034)
- (2) Rating use lower packaging quantity, see "Standard Packaging Quantities" chart

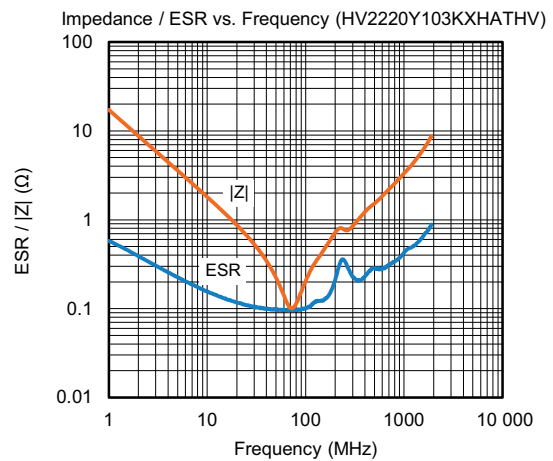
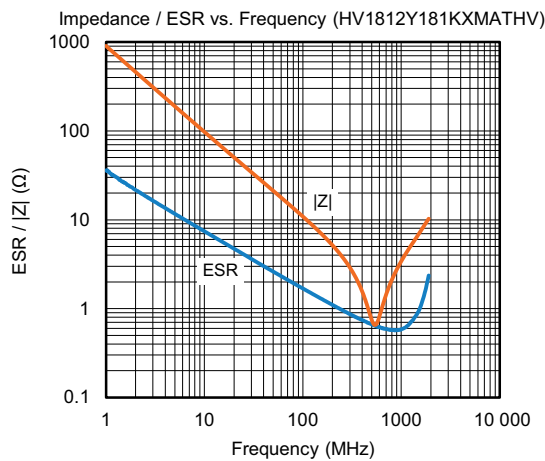
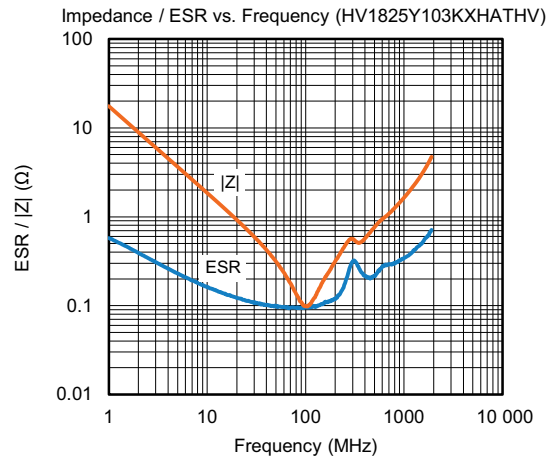
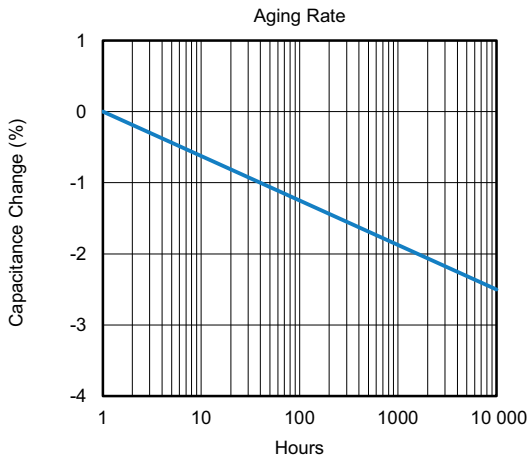
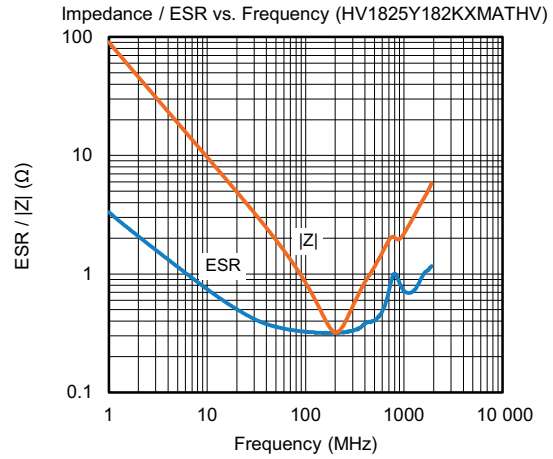
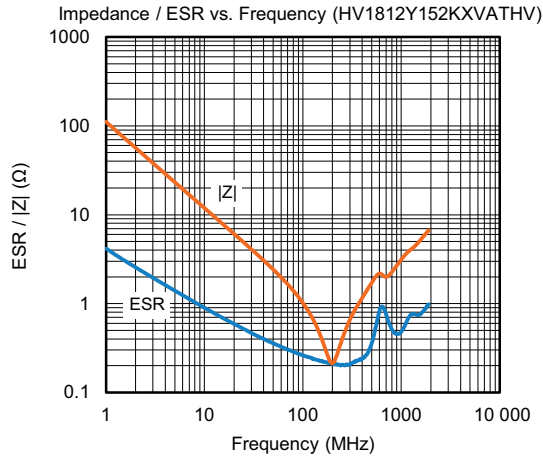


### COG (NP0) DIELECTRIC - TYPICAL PARAMETERS

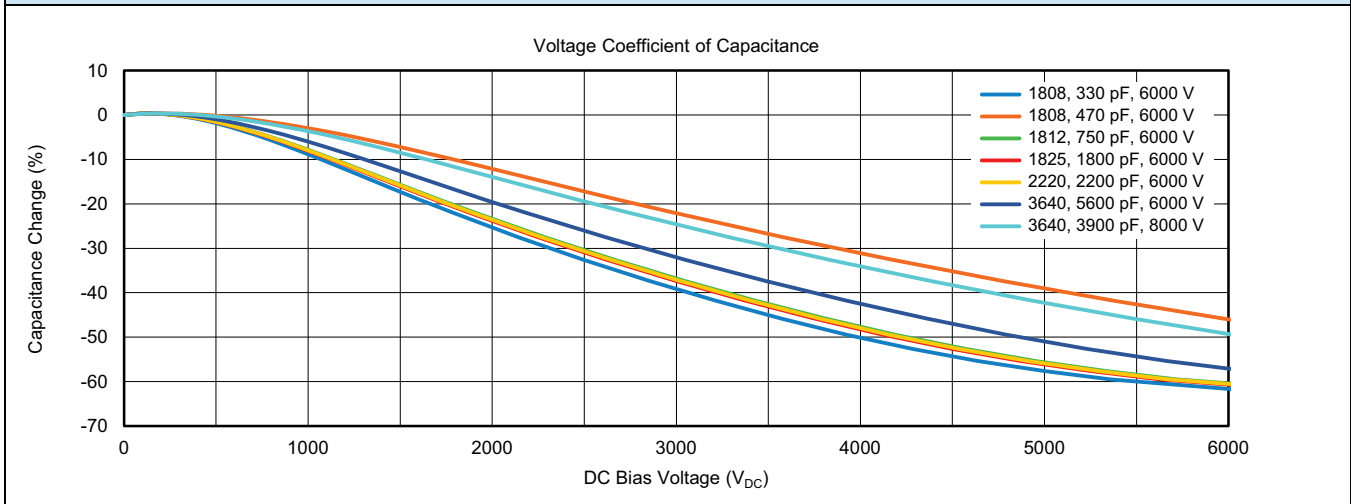




## X7R DIELECTRIC - TYPICAL PARAMETERS



### X7R DIELECTRIC - TYPICAL PARAMETERS

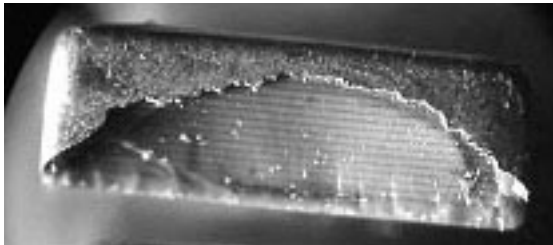


### POLYMER TERMINATION

Polymer termination provides additional protection against board flexure damage by absorbing greater mechanical and thermal stresses. Components can be packaged, transported, stored and handled the same standard terminated product. Reflow soldering of MLCC does not require modification to equipment and / or process. Polymer termination greatly reduces the risk of mechanical cracking however it does not completely eliminate.

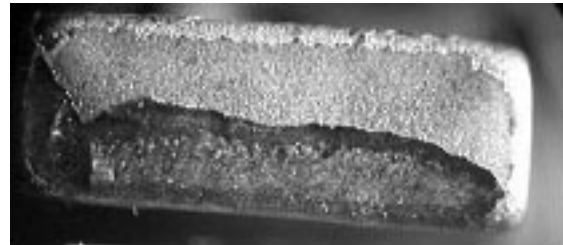
### STANDARD TERMINATION

Exposed Electrodes = Electrical Short



### OMD CAP PLUS POLYMER TERMINATION

No Exposed Electrodes = No Electrical Short



### STANDARD PACKAGING QUANTITIES (1)

CASE CODE	TAPE SIZE	7" REEL QUANTITIES PACKAGING CODE "T"	11 1/4" AND 13" REEL QUANTITIES PACKAGING CODE "R"
1206	8 mm	2500 / 3000	9000 / 10 000
1210	8 mm	2000 / 2500 / 3000	9000 / 10 000
1808	12 mm	2000	10 000
1812	12 mm	500 (2) / 1000	4000
1825	12 mm	500 (2) / 1000	4000
2220	12 mm	500 (2) / 1000	n/a
2225	12 mm	500	n/a
3040	16 mm	500	n/a
3640	16 mm	500	n/a
4044	24 mm	300	n/a

#### Notes

(1) Reference: EIA standard RS 481 - "Taping of Surface Mount Components for Automatic Placement"

(2) Lower quantity for certain ratings, see "Selection Chart"



### STORAGE AND HANDLING CONDITIONS

- (1) Store the components at 5 °C to 40 °C ambient temperature and  $\leq 70$  % relative humidity conditions.
- (2) The product is recommended to be used within a time-frame of 2 years after shipment.  
Check solderability in case extended shelf life beyond the expiry date is needed.

Precautions:

- a. Do not store products in an environment containing corrosive elements, especially where chloride gas, sulfide gas, acid, alkali, salt or the like are present. This may cause corrosion or oxidization of the terminations, which can easily lead to poor soldering.
- b. Store products on the shelf and avoid exposure to moisture or dust.
- c. Do not expose products to excessive shock, vibration, direct sunlight and so on.



## Disclaimer

ALL PRODUCT, PRODUCT SPECIFICATIONS AND DATA ARE SUBJECT TO CHANGE WITHOUT NOTICE TO IMPROVE RELIABILITY, FUNCTION OR DESIGN OR OTHERWISE.

Vishay Intertechnology, Inc., its affiliates, agents, and employees, and all persons acting on its or their behalf (collectively, "Vishay"), disclaim any and all liability for any errors, inaccuracies or incompleteness contained in any datasheet or in any other disclosure relating to any product.

Vishay makes no warranty, representation or guarantee regarding the suitability of the products for any particular purpose or the continuing production of any product. To the maximum extent permitted by applicable law, Vishay disclaims (i) any and all liability arising out of the application or use of any product, (ii) any and all liability, including without limitation special, consequential or incidental damages, and (iii) any and all implied warranties, including warranties of fitness for particular purpose, non-infringement and merchantability.

Statements regarding the suitability of products for certain types of applications are based on Vishay's knowledge of typical requirements that are often placed on Vishay products in generic applications. Such statements are not binding statements about the suitability of products for a particular application. It is the customer's responsibility to validate that a particular product with the properties described in the product specification is suitable for use in a particular application. Parameters provided in datasheets and / or specifications may vary in different applications and performance may vary over time. All operating parameters, including typical parameters, must be validated for each customer application by the customer's technical experts. Product specifications do not expand or otherwise modify Vishay's terms and conditions of purchase, including but not limited to the warranty expressed therein.

Hyperlinks included in this datasheet may direct users to third-party websites. These links are provided as a convenience and for informational purposes only. Inclusion of these hyperlinks does not constitute an endorsement or an approval by Vishay of any of the products, services or opinions of the corporation, organization or individual associated with the third-party website. Vishay disclaims any and all liability and bears no responsibility for the accuracy, legality or content of the third-party website or for that of subsequent links.

Except as expressly indicated in writing, Vishay products are not designed for use in medical, life-saving, or life-sustaining applications or for any other application in which the failure of the Vishay product could result in personal injury or death. Customers using or selling Vishay products not expressly indicated for use in such applications do so at their own risk. Please contact authorized Vishay personnel to obtain written terms and conditions regarding products designed for such applications.

No license, express or implied, by estoppel or otherwise, to any intellectual property rights is granted by this document or by any conduct of Vishay. Product names and markings noted herein may be trademarks of their respective owners.

## X-ON Electronics

Largest Supplier of Electrical and Electronic Components

*Click to view similar products for [Multilayer Ceramic Capacitors MLCC - SMD/SMT category:](#)*

*Click to view products by [Vishay manufacturer:](#)*

Other Similar products are found below :

[M39014/02-1225V](#) [M39014/22-0631](#) [D55342E07B523DR-T/R](#) [NCA1206X7R103K50TRPF](#) [NCA1206X7R104K16TRPF](#) [NIN-FC2R7JTRF](#)  
[NMC0402NPO220J50TRPF](#) [NMC0402X5R105K6.3TRPF](#) [NMC0402X5R224K6.3TRPF](#) [NMC0402X7R103J25TRPF](#)  
[NMC0402X7R392K50TRPF](#) [NMC0603NPO201J50TRPF](#) [NMC0603X7R333K16TRPF](#) [NMC0805NPO820J50TRPF](#)  
[NMC0805X7R224K16TRPLPF](#) [NMC1206X7R102K50TRPF](#) [NMC1206X7R106K10TRPLPF](#) [NMC1206X7R475K10TRPLPF](#) [NMC-](#)  
[Q0402NPO8R2D200TRPF](#) [C1608C0G2A221J](#) [C1608X7R1E334K](#) [C2012C0G2A472J](#) [2220J2K00562KXT](#) [CDR33BX104AKUR](#)  
[CDR33BX683AKUS](#) [CGA3E1X7R1C684K](#) [CL10C0R8BB8ANNC](#) [C1005X5R0G225M](#) [C2012X7R2E223K](#) [C3216C0G2J272J](#)  
[D55342E07B35E7R-T/R](#) [NMC0402X7R562J25TRPF](#) [NMC0603NPO102J25TRPF](#) [NMC1206X7R332K50TRPF](#) [726632-1](#)  
[CGA6M3X7R1H225K](#) [CGA5L2X7R2A105K](#) [CGA3E2X8R1H223K](#) [CDR33BX823AKUR\M500](#) [CDR35BX474AKUR\M500](#)  
[CDR35BX104BKUR\M500](#) [69995D](#) [NMC0201X5R473K6.3TRPF](#) [NMC0201X7R221K25TRPF](#) [NMC0402X5R105K10TRPF](#)  
[NMC0402X5R224K10TRPF](#) [NMC0603X7R104J25TRPF](#) [NMC0603X7R223K25TRPF](#) [NMC0805NPO100J50TRPF](#)  
[NMC0805X7R104M50TRPF](#)