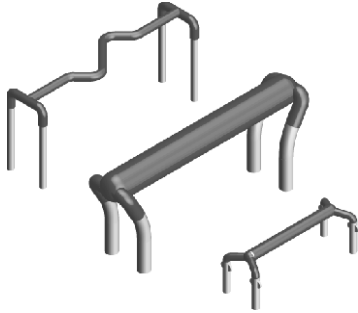




## Wirewound Resistors, Two and Four Terminal, Low Ohmic Value for Current Sensing



**MODELS**  
**SPR0676**  
**SPR2039**  
**SPR2093**

Special Purpose  
Open Style  
Designed for  
Printed Circuit Boards

### STANDARD ELECTRICAL SPECIFICATIONS

| GLOBAL MODEL | HIST. MODEL | WATTAGE        | RESISTANCE RANGE ( $\Omega$ ) | TYPICAL TOL. |
|--------------|-------------|----------------|-------------------------------|--------------|
| SPR0676      | SPR-676     | 1              | 0.0015 to 0.05                | $\pm 0.5\%$  |
| SPR2039      | SPR-2039    | 3.5            | 0.0033 to 0.05                | $\pm 1.0\%$  |
| SPR2093      | SPR-2093    | <sup>(1)</sup> | 0.0005 to 0.002               | $\pm 1.5\%$  |

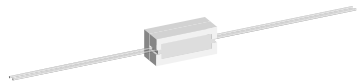
**Note**

<sup>(1)</sup> 13 W on 0.0005  $\Omega$  and 0.001  $\Omega$ , limited to 115 A.  
10 W on 0.001  $\Omega$  and 0.002  $\Omega$ .

### DIMENSIONS in inches [millimeters]

| GLOBAL MODEL | HIST. MODEL | HOLE PATTERN               | TERMINAL DIAMETER |
|--------------|-------------|----------------------------|-------------------|
| SPR0676      | SPR-676     | 0.20 x 0.70 [5.08 x 17.78] | 0.040 [1.02]      |
| SPR2039      | SPR-2039    | 0.25 x 1.0 [6.35 x25.4]    | 0.051 [1.30]      |
| SPR2093      | SPR-2093    | 0.25 x 1.0 [6.35 x25.4]    | 0.081 [2.06]      |

Consult our engineering department for specific part numbers and detailed data sheets, see email address at the bottom of this page.



**MODELS**  
**SPR2073**  
**SPR2123**  
**SPR2091**

Special Purpose  
Ceramic Potted  
Designed for  
Rugged Applications

### STANDARD ELECTRICAL SPECIFICATIONS

| GLOBAL MODEL | HIST. MODEL | WATTAGE           | RESISTANCE RANGE ( $\Omega$ ) | TYPICAL TOL. |
|--------------|-------------|-------------------|-------------------------------|--------------|
| SPR2073      | SPR-2073    | 3 <sup>(2)</sup>  | 0.001 to 0.25                 | $\pm 1.0\%$  |
| SPR2123      | SPR-2123    | 5 <sup>(2)</sup>  | 0.001 to 0.25                 | $\pm 1.0\%$  |
| SPR2091      | SPR-2091    | 10 <sup>(2)</sup> | 0.001 to 0.25                 | $\pm 1.0\%$  |

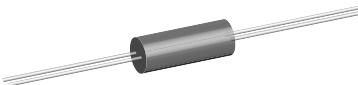
**Note**

<sup>(2)</sup> Limited to 25 A.

### DIMENSIONS in inches [millimeters]

| GLOBAL MODEL | HIST. MODEL | LENGTH        | WIDTH        | HEIGHT       | TERMINAL                   |
|--------------|-------------|---------------|--------------|--------------|----------------------------|
| SPR2073      | SPR-2073    | 0.875 [22.22] | 0.312 [7.94] | 0.312 [7.94] | 0.040 x 2.0 [1.02 x 50.80] |
| SPR2123      | SPR-2123    | 0.875 [22.22] | 0.375 [9.52] | 0.344 [8.73] |                            |
| SPR2091      | SPR-2091    | 1.875 [47.62] | 0.375 [9.52] | 0.344 [8.73] |                            |

Consult our engineering department for specific part numbers and detailed data sheets, see email address at the bottom of this page.



**MODELS**  
**SPR1005**

Special Purpose  
Silicone Molded  
SPR-1005-26 Qualified  
To MIL-PRF-49465/1  
Type RLV-10

### STANDARD ELECTRICAL SPECIFICATIONS

| GLOBAL MODEL | HIST. MODEL | WATTAGE          | RESISTANCE RANGE ( $\Omega$ ) | TYPICAL TOL. |
|--------------|-------------|------------------|-------------------------------|--------------|
| SPR1005      | SPR-1005    | 5 <sup>(3)</sup> | 0.0008 to 0.5                 | $\pm 1.0\%$  |

**Note**

<sup>(3)</sup> Limited to 25 A.

### DIMENSIONS in inches [millimeters]

| GLOBAL MODEL | HIST. MODEL | LENGTH        | DIAMETER     | TERMINAL                   |
|--------------|-------------|---------------|--------------|----------------------------|
| SPR1005      | SPR-1005    | 0.975 [24.77] | 0.380 [9.65] | 0.040 x 1.5 [1.02 x 38.10] |

Consult our engineering department for specific part numbers and detailed data sheets, see email address at the bottom of this page.

## X-ON Electronics

Largest Supplier of Electrical and Electronic Components

*Click to view similar products for [Current Sense Resistors - Through Hole](#) category:*

*Click to view products by [Vishay](#) manufacturer:*

Other Similar products are found below :

[CPSL07R1000JB145](#) [SR10-0.015-1%](#) [SR20-0.008-1%](#) [HPCR0402F12K0K9](#) [HPCR0402F130RK9](#) [HPCR0402F13K0K9](#)

[HPCR0402F17K4K9](#) [HPCR0402F180KK9](#) [HPCR0402F180RK9](#) [HPCR0402F1K10K9](#) [HPCR0402F220KK9](#) [HPCR0402F220RK9](#)

[HPCR0402F24K0K9](#) [HPCR0402F27K0K9](#) [HPCR0402F2K00K9](#) [HPCR0402F33K0K9](#) [HPCR0402F430KK9](#) [HPCR0402F4K30K9](#)

[HPCR0402F4K70K9](#) [HPCR0402F680KK9](#) [HPCR0402F680RK9](#) [HPCR0402F390KK9](#) [HPCR0402F39K0K9](#) [HPCR0402F8K20K9](#)

[HPCR0402F560RK9](#) [HPCR0402F2K70K9](#) [HPCR0402F360KK9](#) [HPCR0402F36K0K9](#) [HPCR0402F3K00K9](#) [HPCR0402F3K90K9](#)

[HPCR0402F430RK9](#) [HPCR0402F43K0K9](#) [HPCR0402F475KK9](#) [HPCR0402F47K0K9](#) [HPCR0402F51K0K9](#) [HPCR0402F560KK9](#)

[HPCR0402F56K0K9](#) [HPCR0402F5K10K9](#) [HPCR0402F5K60K9](#) [HPCR0402F620KK9](#) [HPCR0402F620RK9](#) [HPCR0402F68K0K9](#)

[HPCR0402F6K20K9](#) [HPCR0402F6K80K9](#) [HPCR0402F750KK9](#) [HPCR0402F750RK9](#) [HPCR0402F7K50K9](#) [HPCR0402F820KK9](#)

[HPCR0402F82K0K9](#) [HPCR0402F910KK9](#)