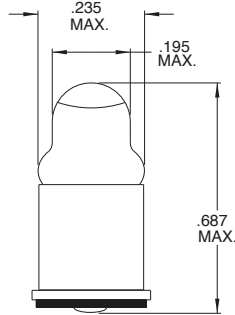
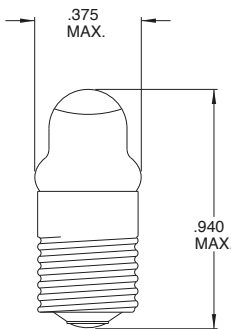


GTL-1 3/4 Midget Flange Base Lens End



Part Number	Design Voltage	Amps	Spot Characteristic	Life Hours	Filament Type
CM252	2.5	.35	A*	10,000	C-2R

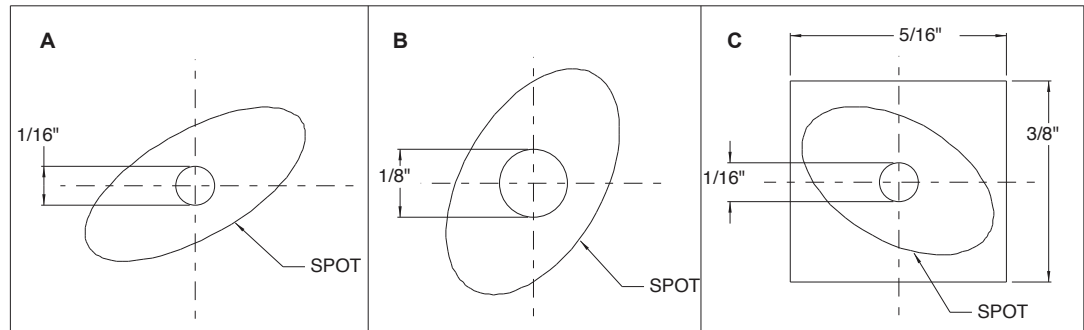
GTL-3 Miniature Screw Base Lens End



Part Number	Design Voltage	Amps	Spot Characteristic	Life Hours	Filament Type
CM112	1.20	.22	None	5	S-2
CM113	1.30	.22	None	15	S-2
CM222	2.25	.25	None	5	C-2R
CM243	2.33	.27	None	10	C-6
CM246	3.80	.22	None	20	C-6

Spot Characteristics

Spots produced by lens end caps vary in shape from elliptical to round. Their respective spot characteristics are defined as follows with the lamp .375" from tip to surface. The specific spot shape will be defined within the limits shown.



A. 750 footcandles minimum over a 1/16" DIA. circle centered on the axis of the lamp.

B. 750 footcandles minimum over a 1/8" DIA. circle centered on the axis of the lamp.

C. 750 footcandles minimum over a 1/16" DIA. circle centered on the axis of the lamp.

X-ON Electronics

Largest Supplier of Electrical and Electronic Components

Click to view similar products for [Lamps](#) category:

Click to view products by [Visual Communications Company](#) manufacturer:

Other Similar products are found below :

[5AB](#) [6180](#) [8111](#) [8623](#) [912](#) [120PS](#) [1224](#) [DE603](#) [DW50](#) [IFL-LX2162-16T](#) [C9A](#) [C9A](#) [3015](#) [303](#) [19](#) [PR13](#) [268](#) [GT-NE6H1225T](#)
[CM5004WW](#) [32-2211T](#) [323](#) [509K](#) [5314N1](#) [5314N2](#) [WWT1-EW10/GRN](#) [4925H1](#) [DW07](#) [10C7DC-120V](#) [1141](#) [MS25231-313](#) [E73](#) [CM2](#)
[7683EBP](#) [8553](#) [XE135B](#) [WWT2-EW34BLA](#) [6S6/30V](#) [7367](#) [1301910036](#) [7A1H](#) [8630FBBB](#) [85](#) [106](#) [105](#) [BGF717-UV1](#) [1974D](#) [1495](#) [373](#)
[400](#) [502](#)