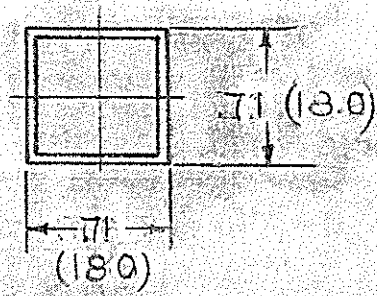
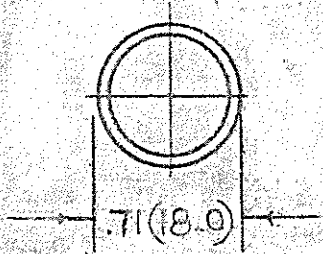
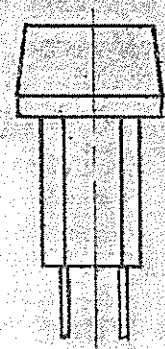
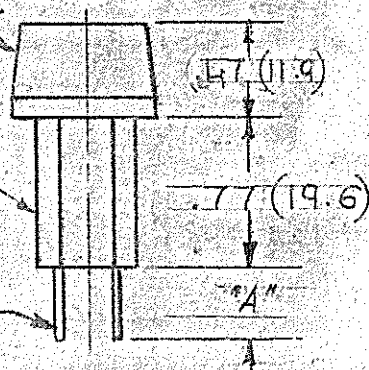


DET NO	SOCKET NO	TERMINAL SIZE	DIM "A"
1	3040	.205 (5.21) WIDE	.28 (7.1)
2	3043	.187 (4.75) WIDE	.28 (7.1)

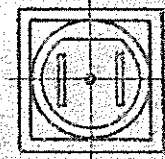
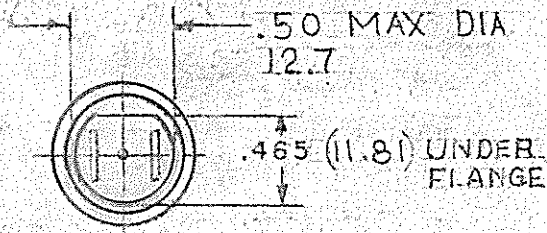


LENS, POLYCARBONATE
(SEE TABLE)

SOCKET,
BLACK NYLON



TERMINALS, NICKEL
PLATED BRASS.
(SEE TABLE
FOR WIDTH)



3040 SERIES - ROUND LENS

3040 SERIES - SQUARE LENS

ROUND LENS#	LENS COLOR	SQUARE LENS#
3111	RED	3121
3112	CLEAR	3122
3113	AMBER	3123
3114	WHITE	3124
3115	GREEN	3125
3116	BLUE	3126
3117	YELLOW	3127

NOTES:

- FOR USE WITH "INDICATOR" SLIDE BASE LAMPS (TYPE ES B)
- PUSH ON SPEED NUT PART # SN0461 SUPPLIED

DIMENSION	UNLESS OTHERWISE SPECIFIED TOLERANCES ARE:
INCHES	FRACTIONAL ± .015, 2 PLACE DECIMAL ± .010, 3 PLACE DECIMAL ± .005
(MILLIMETERS)	(1 PLACE DECIMAL ± .3MM, 2 PLACE DECIMAL ± .13MM) ANGULAR ± 1/2°

DIST.
C

BRUNING 40-105 33679

REVISIONS

A
ECN 1393
REDRAWN &
CORRECTED NOTES
4-27-79

MODEL 3040 SERIES
PILOT LIGHTS



INDUSTRIAL DEVICES, INC.
EDGEWATER, NEW JERSEY

DRAWN BY M.G.

CHECKED BY

DATE 4-27-79

SCALE 1:1

A-4702

X-ON Electronics

Largest Supplier of Electrical and Electronic Components

Click to view similar products for [Lamp Holders & Accessories](#) category:

Click to view products by [Visual Communications Company](#) manufacturer:

Other Similar products are found below :

[811730-1](#) [MS25041-8-327](#) [162-8430-0931-502-327](#) [PBMBN](#) [251-7538-15-504](#) [2802](#) [294502](#) [162-8430-0932-502-327](#) [183-9730-14-602](#) [21-16](#) [251-8738-15-504](#) [259-1930-29-801](#) [2707508753800](#) [350-0410-01-203](#) [367-8430-0971-503](#) [367-8430-09-802](#) [367-8430-09-810](#) [371-8738-14-504](#) [4610](#) [367-8430-0972-503](#) [367-8430-09-808](#) [367-8430-09-809](#) [492H412-9](#) [MS25256-2-327](#) [737AS15](#) [830-1430-14-503](#) [PBMBP](#) [851-1030-0001-504](#) [047340229301](#) [061131002301](#) [081041001100](#) [019310105301](#) [080320205303](#) [361-8836-0931-552](#) [1.71.209.001/0000](#) [1301910073](#) [04-12](#) [02-82](#) [26-07](#) [07-20](#) [101-8430-09-203](#) [177-8430-09-503](#) [162-8430-0937-502](#) [812-1030-09-506](#) [250-8738-14-504](#) [125-1310-11-103](#) [270-1930-702](#) [MS25041-7-327](#) [162-8430-0931-502](#) [95-5763-09-311](#)