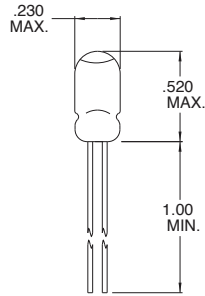
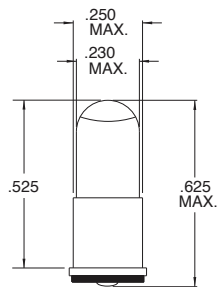


TL-1 3/4 Wire Terminal Lens End



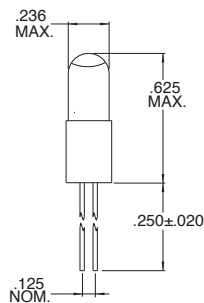
Part Number	Design Voltage	Amps	Spot Characteristic	Life Hours	Filament Type
CM8-374	2.5	.35	B*	3,000	C-2R
CM1750	2.5	.40	None	3,000	C-2R
CM1948	2.5	.40	None	7,500	C-2R
CM8426	5.0	.18	None	10,000	C-2R

TL-1 3/4 Midget Flange Base Lens End



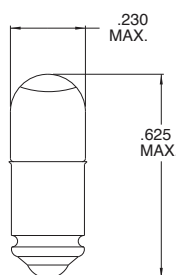
Part Number	Design Voltage	Amps	Spot Characteristic	Life Hours	Filament Type
CM8-3374	2.5	.35	B*	10,000	C-2R
CM8-443	5.0	.22	None	10,000	C-2R
CM3903	14.0	.08	None	1,000	C-2F

TL-1 3/4 Bi-Pin Base (.125") Lens End



Part Number	Design Voltage	Amps	Spot Characteristic	Life Hours	Filament Type
CM761	2.5	.35	B*	10,000	C-2R
CM8261	2.5	.35	None	10,000	C-2R
CM7426	5.0	.22	None	10,000	C-2R

TL-1 3/4 Midget Groove Base Lens End



Part Number	Design Voltage	Amps	Spot Characteristic	Life Hours	Filament Type
CM8-373	2.5	.35	B*	10,000	C-2R
CM3901	5.0	.18	None	10,000	C-2R
CM3904	14.0	.08	None	1,000	C-2F

* Reference page 2-61 for applicable spot characteristics.

X-ON Electronics

Largest Supplier of Electrical and Electronic Components

Click to view similar products for [Lamps](#) category:

Click to view products by [Visual Communications Company](#) manufacturer:

Other Similar products are found below :

[5AB](#) [6180](#) [8111](#) [8623](#) [912](#) [120PS](#) [1224](#) [DE603](#) [DW50](#) [IFL-LX2162-16T](#) [C9A](#) [C9A](#) [3015](#) [303](#) [19](#) [PR13](#) [268](#) [GT-NE6H1225T](#)
[CM5004WW](#) [32-2211T](#) [323](#) [509K](#) [5314N1](#) [5314N2](#) [WWT1-EW10/GRN](#) [4925H1](#) [DW07](#) [10C7DC-120V](#) [1141](#) [MS25231-313](#) [E73](#) [CM2](#)
[7683EBP](#) [8553](#) [XE135B](#) [WWT2-EW34BLA](#) [6S6/30V](#) [7367](#) [1301910036](#) [7A1H](#) [8630FBBB](#) [85](#) [106](#) [105](#) [BGF717-UV1](#) [1974D](#) [1495](#) [373](#)
[400](#) [502](#)