



CNX 410 Series

Build Your Own Indicator

for Use With T-1 3/4 (5mm) LEDs



CNX 410 Series features modular panel mount indicator assemblies and mounting hardware and require no tools for assembly



Applications

- Industrial
- Transportation
- Emergency Applications
- Maritime, Oil and Gas Industry
- Automation and Control
- People Movers
- Instrument Panels
- Gaming and Vending Machines
- Outdoor Applications

Key Features

- For panel hole diameter: .313" (7.9mm) opening on 0.5" (12.7mm) center
- Choice of 2 different types of lenses
- Terminations available: stripped end and locking connector
- Eliminates the need for soldering or crimping wires
- Available wire gauge: 22 AWG or 24 AWG
- Available in 6 standard wire lengths, from 4" to 24"
- Choice of 2 different wires colors: White/Black or Red/Black
- Panel thickness up to .125" (3.18mm) max
- 5mm (T-1 3/4) LED with or without flange and lens needs to be ordered separately
- For additional options please contact our technical sales department
- U.S. and foreign patent issued
- RoHS and REACH Compliant



Ordering Data

Series	LED Termination			Wire Size	Wire Color	Wire Length		
CNX 410	012	X	02	4	1	12		
	012=	120 OHMS		2	22 AWG	1	White-Black	
	018=	180 OHMS		4	24 AWG	2	Red-Black	
	033=	330 OHMS						
	056=	560 OHMS	X	Stripped End			04	4in (101.6mm)
	120=	1200 OHMS	E	Single Row Locking Header			06	6in (152.4mm)
	220=	2200 OHMS					08	8in (203.2mm)
							12	12in (304.8mm)
							18	18in (457.2mm)
							24	24in (609.6mm)



Example:

CNX_410_012_X02_4_1_12

120 OHMS, Stripped End, 24 AWG Wire Size, White/Black Wire Color, 12 Inch Wire Length

Shown with 5mm (T-1 3/4) LED and CMS 442 Lens

***Call VCC for additional options**

Terminations



Stripped End (X)

Wire color options



Single Row (E)

Locking Connector
2 Wires Option Only

Accessories (Order Separately)



5mm (T-1 3/4)

2-leads with or
without Flange



CMC 441

Fresnel Lens

- CMC_441_RTP
- CMC_441_BTP
- CMC_441_GTP
- CMC_441_ATP
- CMC_441_YTP
- CMC_441_CTP

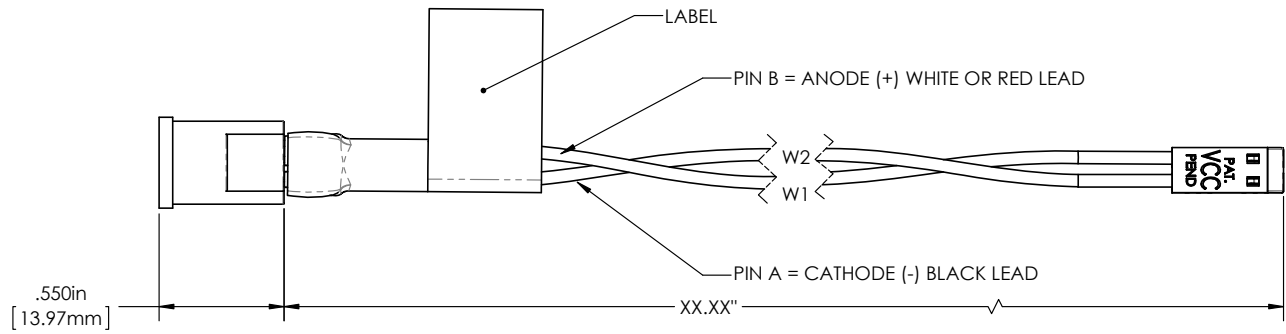


CMS 442

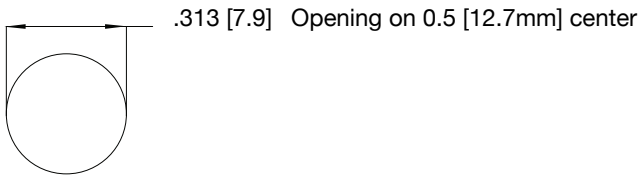
Sealed Fresnel Lens

- CMS_442_RTP
- CMS_442_BTP
- CMS_442_GTP
- CMS_442_ATP
- CMS_442_YTP
- CMS_442_CTP
- CMS_442_GLO

Product Dimensions



Recommended Mounting Hole



Notes:

1. All dimensions are in inches [millimeters]
2. Tolerance is $\pm .500$ [12.7] unless otherwise noted.
3. XX.XX refer to wire length
4. The specifications, characteristics and technical data described in the datasheet are subject to change without prior notice.

Product Specifications

Materials	
Panel Connector	Thermoplastic, White, UL 94-V0
Head Connector	Polyester, UL 94-V0
Lens	Polycarbonate, UL 94-V2
Moisture Seal	EPDM
Lock Washer	Steel, Nickel Plate
Terminals	Phosphor Bronze, Tin Plate
Wire	22 or 24 AWG 1007/1569

Installation Specifications	
Mounting Hole	.313" (7.9mm) opening on 0.5" (12.7mm) center
Panel Thickness	Up to .125" (3.18mm) Max
LED Lead Length	.250" \pm .01" (6.35mm \pm 0.254mm)
Applications	CMC 441- For standard dry applications CMC 442 - Wet and dry applications (Meets NEMA 6P/IP67)

Compliances and Approvals



X-ON Electronics

Largest Supplier of Electrical and Electronic Components

Click to view similar products for [Lighting Cables](#) category:

Click to view products by [Visual Communications Company](#) manufacturer:

Other Similar products are found below :

[CL2-EXTEND](#) [96CB-E0605HAA1](#) [ZWF-915-J](#) [68801-4899](#) [68801-2112](#) [68801-2123](#) [68801-4124](#) [68801-4752](#) [68801-4850](#) [ZFS-CH144-12I](#) [96CB-E0405PCA3](#) [96CB-E0405PIC3](#) [96CB-E0605HAB1](#) [SSL11-J2LJ0-022A04](#) [CNXBE4218](#) [1-2058943-7](#) [1-2058943-8](#) [1-2083075-2](#) [1-2083080-1](#) [CNX310-120-X4124](#) [CNX_C_E_4_2_08](#) [CNXBE4118](#) [CNX_310_012_E_4_1_12](#) [2702306](#) [2702307](#) [SSL12-J4FJ0-000001](#) [180888-0405](#) [SSL12-J2LJ0-020F01](#) [180887-0430](#) [1705131](#) [180887-0410](#) [180778-0405](#) [1-2083029-8](#) [SSL12-J4LJ0-020H01](#) [180778-0430](#) [SSL12-P4LP0-M20H01](#) [SSL12-P4LP0-M20F01](#) [SSL12-P2LP0-M20F01](#) [SSL12-J4LJ0-020F01](#) [SSL11-J2LJ0-B22A04](#) [68801-4037](#) [68801-4039](#) [68801-4053](#) [68801-4055](#) [68801-4057](#) [68801-4059](#) [68801-4061](#) [960026](#) [2-2083030-2](#) [4767](#)