

# CNX B Series

## Build Your Own Indicator

### for Use With T-1 (3mm) LEDs



CNX B Series features modular panel mount indicator assemblies and mounting hardware and require no tools for assembly



#### Applications

- Industrial
- Transportation
- Emergency Applications
- Maritime, Oil and Gas Industry
- Automation and Control
- People Movers
- Instrument Panels
- Gaming and Vending Machines
- Outdoor Applications

#### Key Features

- For panel hole diameter: 0.171" (4.37mm)
- Choice of 1 type of lens and a round panel clip
- Terminations available: stripped end, locking connector, plain connector and with terminals
- Eliminates the need for soldering or crimping wires
- Available wire gauge: 22 AWG or 24 AWG
- Available in 7 standard wire lengths, from 4" to 48"
- Choice of 2 different wires colors: White/Black or Red/Black
- Panel thickness ranges from 0.030" (0.762mm) to 0.75" (1.905mm)
- 3mm (T-1) LED with or without flange, lens, clip and spacer needs to be ordered separately
- Spacer SPC\_040 made of EPDM rubber is optional and designed to seal against water, oil, air and dust
- For additional options please contact our technical sales department
- U.S. and foreign patent issued
- RoHS and REACH Compliant

## Ordering Data

Series	LED Termination	Wire Size	Wire Color	Wire Length																														
<b>CNX B</b>	<b>X</b>	<b>4</b>	<b>1</b>	<b>12</b>																														
	<table border="1"> <tr><td>X</td><td>Stripped End</td></tr> <tr><td>E</td><td>Single Row Locking Header</td></tr> <tr><td>G</td><td>Single Row Plain Header</td></tr> <tr><td>A</td><td>W/Terminals; No Connector</td></tr> </table>	X	Stripped End	E	Single Row Locking Header	G	Single Row Plain Header	A	W/Terminals; No Connector	<table border="1"> <tr><td>2</td><td>22 AWG</td></tr> <tr><td>4</td><td>24 AWG</td></tr> </table>	2	22 AWG	4	24 AWG	<table border="1"> <tr><td>1</td><td>White/Black</td></tr> <tr><td>2</td><td>Red/Black</td></tr> </table>	1	White/Black	2	Red/Black	<table border="1"> <tr><td>04</td><td>4in (101.6mm)</td></tr> <tr><td>06</td><td>6in (152.4mm)</td></tr> <tr><td>08</td><td>8in (203.2mm)</td></tr> <tr><td>12</td><td>12in (304.8mm)</td></tr> <tr><td>18</td><td>18in (457.2mm)</td></tr> <tr><td>24</td><td>24in (609.6mm)</td></tr> <tr><td>48</td><td>48in (1219.2mm)</td></tr> </table>	04	4in (101.6mm)	06	6in (152.4mm)	08	8in (203.2mm)	12	12in (304.8mm)	18	18in (457.2mm)	24	24in (609.6mm)	48	48in (1219.2mm)
X	Stripped End																																	
E	Single Row Locking Header																																	
G	Single Row Plain Header																																	
A	W/Terminals; No Connector																																	
2	22 AWG																																	
4	24 AWG																																	
1	White/Black																																	
2	Red/Black																																	
04	4in (101.6mm)																																	
06	6in (152.4mm)																																	
08	8in (203.2mm)																																	
12	12in (304.8mm)																																	
18	18in (457.2mm)																																	
24	24in (609.6mm)																																	
48	48in (1219.2mm)																																	



Example:

**CNX\_B\_X\_4\_1\_12**

Stripped End, 24 AWG Wire Size, White/Black Wire Color, 12 Inch Wire Length

*Shown with 3mm (T-1) LED and SMC 170 Lens*

**\*Call VCC for additional options**

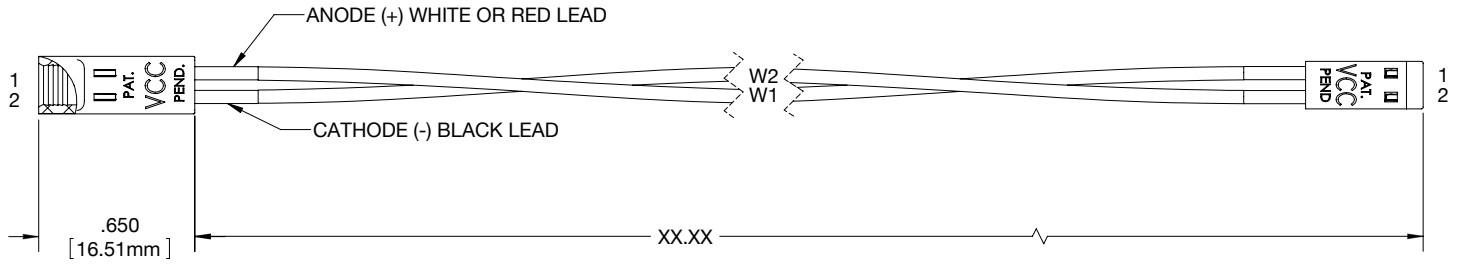
## Terminations



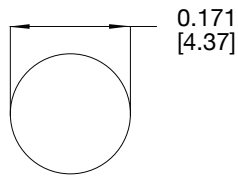
## Accessories (Order Separately)



## Product Dimensions



## Recommended Mounting Hole



## Notes:

1. All dimensions are in inches [millimeters]
2. Tolerance is  $\pm .500$  [12.7] unless otherwise noted.
3. XX.XX refer to wire length
4. The specifications, characteristics and technical data described in the datasheet are subject to change without prior notice.

## Product Specifications

Materials	
Panel Connector Socket	Polypropylene, UL 94-HB
Head Connector	Polyester, UL 94-V0
Terminals	Phosphor Bronze, Tin Plate
Wire	22 or 24 AWG 1007/1569

Installation Specifications	
Mounting Hole	0.171" (4.37mm)
Panel Thickness	.030" (.762mm) Min - .075" (1.905mm) Max For .030" (.762mm) - .050" (1.270mm) Use 1 SPC_040 Spacer For .055" (1.397mm) - .075" (1.905mm) No Spacer Required
LED Lead Length	SMC 130 - .380" (9.652mm) SMC 170 - .320" (8.128mm)

## Compliances and Approvals



## X-ON Electronics

Largest Supplier of Electrical and Electronic Components

*Click to view similar products for [Lighting Cables](#) category:*

*Click to view products by [Visual Communications Company](#) manufacturer:*

Other Similar products are found below :

[CL2-EXTEND](#) [96CB-E0605HAA1](#) [ZWF-915-J](#) [68801-4899](#) [68801-2112](#) [68801-2123](#) [68801-4124](#) [68801-4752](#) [68801-4850](#) [ZFS-CH144-12I](#) [96CB-E0405PCA3](#) [96CB-E0405PIC3](#) [96CB-E0605HAB1](#) [SSL11-J2LJ0-022A04](#) [CNXBE4218](#) [1-2058943-7](#) [1-2058943-8](#) [1-2083075-2](#) [1-2083080-1](#) [CNX310-120-X4124](#) [CNX\\_C\\_E\\_4\\_2\\_08](#) [CNXBE4118](#) [CNX\\_310\\_012\\_E\\_4\\_1\\_12](#) [2702306](#) [2702307](#) [SSL12-J4FJ0-000001](#) [180888-0405](#) [SSL12-J2LJ0-020F01](#) [180887-0430](#) [1705131](#) [180887-0410](#) [180778-0405](#) [1-2083029-8](#) [SSL12-J4LJ0-020H01](#) [180778-0430](#) [SSL12-P4LP0-M20H01](#) [SSL12-P4LP0-M20F01](#) [SSL12-P2LP0-M20F01](#) [SSL12-J4LJ0-020F01](#) [SSL11-J2LJ0-B22A04](#) [68801-4037](#) [68801-4039](#) [68801-4053](#) [68801-4055](#) [68801-4057](#) [68801-4059](#) [68801-4061](#) [960026](#) [2-2083030-2](#) [SSL12-J2LJ0-020A04](#)