

CNX C Series

Build Your Own Indicator

for Use With T-1 3/4 (5mm) LEDs



CNX C Series features modular panel mount indicator assemblies and mounting hardware and require no tools for assembly



Applications

- Industrial
- Transportation
- Emergency Applications
- Maritime, Oil and Gas Industry
- Automation and Control
- People Movers
- Instrument Panels
- Gaming and Vending Machines
- Outdoor Applications

Key Features

- For panel hole diameter: 0.281" (7.14mm)
- Choice of 4 different types of lenses and a round panel clip
- Terminations available: stripped end, locking connector, plain connector, and with terminals
- Eliminates the need for soldering or crimping wires
- Available wire gauge: 22 AWG or 24 AWG
- Available in 7 standard wire lengths, from 4" to 30"
- Choice of 2 different wires colors: White/Black or Red/Black
- Panel thickness ranges from 0.030" (0.762mm) to .125" (3.175mm)
- 5mm (T-1 3/4) LED with or without flange, lens, clip and spacer needs to be ordered separately
- Spacer SPC_060 made of EPDM rubber is optional and designed to seal against water, oil, air and dust
- For additional options please contact our technical sales department
- U.S. and foreign patent issued
- RoHS and REACH Compliant

Ordering Data

Series	LED Termination	Wire Size	Wire Color	Wire Length																														
CNX C	X	4	1	12																														
	<table border="1"> <tr><td>X</td><td>Stripped End</td></tr> <tr><td>E</td><td>Single Row Locking Header</td></tr> <tr><td>G</td><td>Single Row Plain Header</td></tr> <tr><td>A</td><td>W/Terminals; No Connector</td></tr> </table>	X	Stripped End	E	Single Row Locking Header	G	Single Row Plain Header	A	W/Terminals; No Connector	<table border="1"> <tr><td>2</td><td>22 AWG</td></tr> <tr><td>4</td><td>24 AWG</td></tr> </table>	2	22 AWG	4	24 AWG	<table border="1"> <tr><td>1</td><td>White-Black</td></tr> <tr><td>2</td><td>Red-Black</td></tr> </table>	1	White-Black	2	Red-Black	<table border="1"> <tr><td>04</td><td>4in (101.6mm)</td></tr> <tr><td>06</td><td>6in (152.4mm)</td></tr> <tr><td>08</td><td>8in (203.2mm)</td></tr> <tr><td>12</td><td>12in (304.8mm)</td></tr> <tr><td>18</td><td>18in (457.2mm)</td></tr> <tr><td>24</td><td>24in (609.6mm)</td></tr> <tr><td>30</td><td>30in (762mm)</td></tr> </table>	04	4in (101.6mm)	06	6in (152.4mm)	08	8in (203.2mm)	12	12in (304.8mm)	18	18in (457.2mm)	24	24in (609.6mm)	30	30in (762mm)
X	Stripped End																																	
E	Single Row Locking Header																																	
G	Single Row Plain Header																																	
A	W/Terminals; No Connector																																	
2	22 AWG																																	
4	24 AWG																																	
1	White-Black																																	
2	Red-Black																																	
04	4in (101.6mm)																																	
06	6in (152.4mm)																																	
08	8in (203.2mm)																																	
12	12in (304.8mm)																																	
18	18in (457.2mm)																																	
24	24in (609.6mm)																																	
30	30in (762mm)																																	



Example:

CNX_C_X_4_1_12

Stripped End, 24 AWG Wire Size, White/Black Wire Color, 12 Inch Wire Length

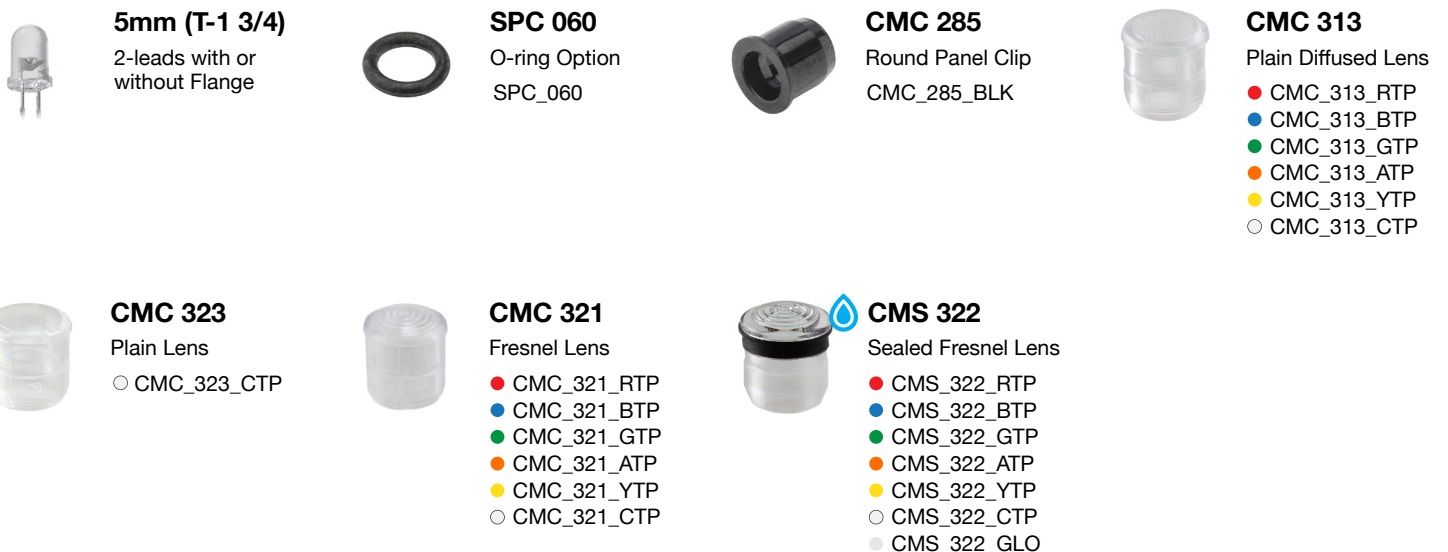
Shown with 5mm (T-1 3/4) LED and CMS 322 Lens

*Call VCC for additional options

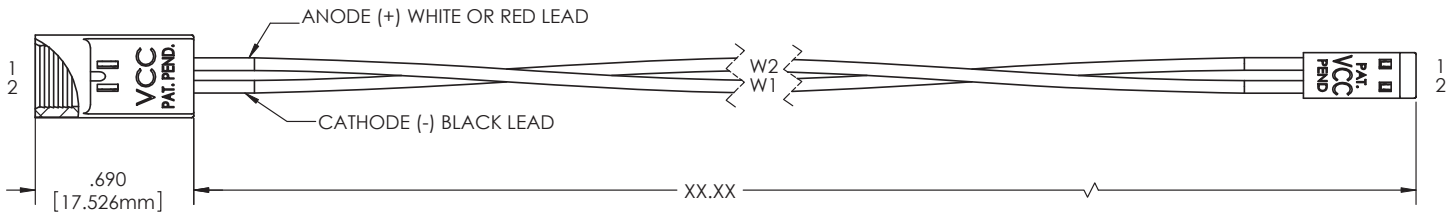
Terminations



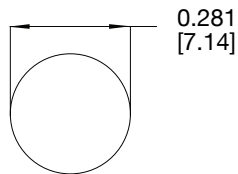
Accessories (Order Separately)



Product Dimensions



Recommended Mounting Hole



Notes:

1. All dimensions are in inches [millimeters]
2. Tolerance is $\pm .500$ [12.7] unless otherwise noted. unless otherwise noted.
3. XX.XX refer to wire length
4. The specifications, characteristics and technical data described in the datasheet are subject to change without prior notice.

Product Specifications

Materials	
Panel Connector Socket	Polypropylene, UL 94-HB
Head Connector	Polyester, UL 94-V0
Terminals	Phosphor Bronze, Tin Plate
Wire	22 or 24 AWG 1007/1569

Installation Specifications	
Mounting Hole	0.281" (7.14mm)
Panel Thickness	.030" (.762mm) Min - .125" (3.175mm) Max For .030" (.762mm) - .045" (1.143mm) Use 2 SPC_060 Spacer For .050" (1.27mm) - .100" (2.54mm) Use 1 SPC_060 Spacer For .105" (2.67mm) - .125" (3.175mm) No spacer required
LED Lead Length	CMC 285 - .350" $\pm .01$ " (8.89mm ± 0.254 mm) CMC 313, CMC 321, CMC 323, and CMS 322 - .250" $\pm .01$ " (6.35mm ± 0.254 mm)

Compliances and Approvals



X-ON Electronics

Largest Supplier of Electrical and Electronic Components

Click to view similar products for [Lighting Cables](#) category:

Click to view products by [Visual Communications Company](#) manufacturer:

Other Similar products are found below :

[CL2-EXTEND](#) [96CB-E0605HAA1](#) [ZWF-915-J](#) [68801-4899](#) [68801-2112](#) [68801-2123](#) [68801-4124](#) [68801-4752](#) [68801-4850](#) [ZFS-CH144-12I](#) [96CB-E0405PCA3](#) [96CB-E0405PIC3](#) [96CB-E0605HAB1](#) [SSL11-J2LJ0-022A04](#) [CNXBE4218](#) [1-2058943-7](#) [1-2058943-8](#) [1-2083075-2](#) [1-2083080-1](#) [CNX310-120-X4124](#) [CNX_C_E_4_2_08](#) [CNXBE4118](#) [CNX_310_012_E_4_1_12](#) [2702306](#) [2702307](#) [SSL12-J4FJ0-000001](#) [180888-0405](#) [SSL12-J2LJ0-020F01](#) [180887-0430](#) [1705131](#) [180887-0410](#) [180778-0405](#) [1-2083029-8](#) [SSL12-J4LJ0-020H01](#) [180778-0430](#) [SSL12-P4LP0-M20H01](#) [SSL12-P4LP0-M20F01](#) [SSL12-P2LP0-M20F01](#) [SSL12-J4LJ0-020F01](#) [SSL11-J2LJ0-B22A04](#) [68801-4037](#) [68801-4039](#) [68801-4053](#) [68801-4055](#) [68801-4057](#) [68801-4059](#) [68801-4061](#) [960026](#) [2-2083030-2](#) [SSL12-J2LJ0-020A04](#)