

# CNX K Series

## Build Your Own Indicator

### for Use With T-1 3/4 (5mm) LEDs



CNX K Series features modular panel mount indicator assemblies and mounting hardware and require no tools for assembly



#### Applications

- Industrial
- Transportation
- Emergency Applications
- Maritime, Oil and Gas Industry
- Automation and Control
- People Movers
- Instrument Panels
- Gaming and Vending Machines
- Outdoor Applications

#### Key Features

- For panel hole diameter: 0.281" (7.14mm)
- Terminations available: stripped end, locking connector and plain connector
- Eliminates the need for soldering or crimping wires
- Available wire gauge: 24 AWG
- Available in 6 standard wire lengths, from 4" to 24"
- Choice of 2 different wires colors: White/Black or Red/Black
- Panel thickness ranges from 0.030" (0.762mm) to .250" (6.35mm)
- 5mm (T-1 3/4) LED (Flangeless only) needs to be ordered separately
- For additional options please contact our technical sales department
- U.S. and foreign patent issued
- RoHS and REACH Compliant

## Ordering Data

| Series       | LED Termination   | Wire Size | Wire Color   | Wire Length |                           |   |                         |   |   |        |   |   |             |   |           |  |    |               |    |               |    |               |    |                |    |                |    |                |
|--------------|---|-----------|--------------|-------------|---------------------------|---|-------------------------|---|---|--------|---|---|-------------|---|-----------|--|----|---------------|----|---------------|----|---------------|----|----------------|----|----------------|----|----------------|
| <b>CNX K</b> | <b>G</b>  | <b>4</b>  | <b>1</b>     | <b>12</b>   |                           |   |                         |   |   |        |   |   |             |   |           |  |    |               |    |               |    |               |    |                |    |                |    |                |
|              | <table border="1"> <tr> <td>X</td> <td>Stripped End</td> </tr> <tr> <td>E</td> <td>Single Row Locking Header</td> </tr> <tr> <td>G</td> <td>Single Row Plain Header</td> </tr> </table> | X         | Stripped End | E           | Single Row Locking Header | G | Single Row Plain Header | <table border="1"> <tr> <td>4</td> <td>24 AWG</td> </tr> </table> | 4 | 24 AWG | <table border="1"> <tr> <td>1</td> <td>White-Black</td> </tr> <tr> <td>2</td> <td>Red-Black</td> </tr> </table> | 1 | White-Black | 2 | Red-Black | <table border="1"> <tr> <td>04</td> <td>4in (101.6mm)</td> </tr> <tr> <td>06</td> <td>6in (152.4mm)</td> </tr> <tr> <td>08</td> <td>8in (203.2mm)</td> </tr> <tr> <td>12</td> <td>12in (304.8mm)</td> </tr> <tr> <td>18</td> <td>18in (457.2mm)</td> </tr> <tr> <td>24</td> <td>24in (609.6mm)</td> </tr> </table> | 04 | 4in (101.6mm) | 06 | 6in (152.4mm) | 08 | 8in (203.2mm) | 12 | 12in (304.8mm) | 18 | 18in (457.2mm) | 24 | 24in (609.6mm) |
| X            | Stripped End  |           |              |             |                           |   |                         |   |   |        |   |   |             |   |           |  |    |               |    |               |    |               |    |                |    |                |    |                |
| E            | Single Row Locking Header   |           |              |             |                           |   |                         |   |   |        |   |   |             |   |           |  |    |               |    |               |    |               |    |                |    |                |    |                |
| G            | Single Row Plain Header   |           |              |             |                           |   |                         |   |   |        |   |   |             |   |           |  |    |               |    |               |    |               |    |                |    |                |    |                |
| 4            | 24 AWG  |           |              |             |                           |   |                         |   |   |        |   |   |             |   |           |  |    |               |    |               |    |               |    |                |    |                |    |                |
| 1            | White-Black   |           |              |             |                           |   |                         |   |   |        |   |   |             |   |           |  |    |               |    |               |    |               |    |                |    |                |    |                |
| 2            | Red-Black   |           |              |             |                           |   |                         |   |   |        |   |   |             |   |           |  |    |               |    |               |    |               |    |                |    |                |    |                |
| 04           | 4in (101.6mm)   |           |              |             |                           |   |                         |   |   |        |   |   |             |   |           |  |    |               |    |               |    |               |    |                |    |                |    |                |
| 06           | 6in (152.4mm)   |           |              |             |                           |   |                         |   |   |        |   |   |             |   |           |  |    |               |    |               |    |               |    |                |    |                |    |                |
| 08           | 8in (203.2mm)   |           |              |             |                           |   |                         |   |   |        |   |   |             |   |           |  |    |               |    |               |    |               |    |                |    |                |    |                |
| 12           | 12in (304.8mm)  |           |              |             |                           |   |                         |   |   |        |   |   |             |   |           |  |    |               |    |               |    |               |    |                |    |                |    |                |
| 18           | 18in (457.2mm)  |           |              |             |                           |   |                         |   |   |        |   |   |             |   |           |  |    |               |    |               |    |               |    |                |    |                |    |                |
| 24           | 24in (609.6mm)  |           |              |             |                           |   |                         |   |   |        |   |   |             |   |           |  |    |               |    |               |    |               |    |                |    |                |    |                |



Example:

**CNX\_K\_G\_4\_1\_12**

Single Row Plain Header, 24 AWG Wire Size, White/Black Wire Color, 12 Inch Wire Length

*Shown with 5mm (T-1 3/4) Flangeless LED*

**\*Call VCC for additional options**

## Terminations



### Stripped End (X)

Wire color options



### Single Row (E)

Locking Connector  
2 Wires Option Only



### Single Row (G)

Plain Connector  
2 Wires Option Only

## Accessories (Order Separately)



### 5mm (T-1 3/4)

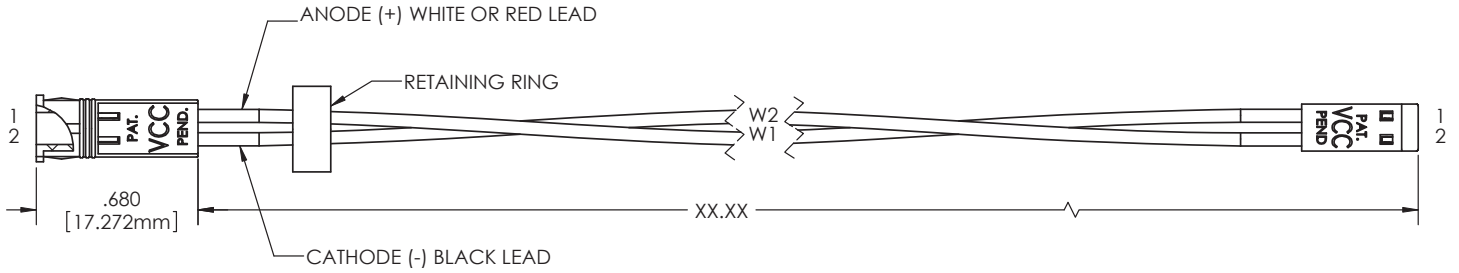
Flangeless Only



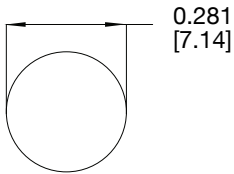
### RNG 242

Retainer Ring Option  
RNG\_242

## Product Dimensions



### Recommended Mounting Hole



### Notes:

1. All dimensions are in inches [millimeters]
2. Tolerance is  $\pm .500$  [12.7] unless otherwise noted.
3. XX.XX refer to wire length
4. The specifications, characteristics and technical data described in the datasheet are subject to change without prior notice.

## Product Specifications

| Materials              |                            |
|------------------------|----------------------------|
| Panel Connector Socket | Polypropylene, UL 94-HB    |
| Head Connector         | Polyester, UL 94-V0        |
| Terminals              | Phosphor Bronze, Tin Plate |
| Wire                   | 24 AWG 1007/1569           |

| Installation Specifications |   |
|-----------------------------|---|
| Mounting Hole               | 0.281" (7.14mm)   |
| Panel Thickness             | .030" (.762mm) Min - .250" (6.35mm) Max<br>Use RNG 242 retainer ring when additional security is required |
| LED Lead Length             | 5mm Flangeless LED .250" (6.35mm)   |

## Compliances and Approvals



## X-ON Electronics

Largest Supplier of Electrical and Electronic Components

*Click to view similar products for [Lighting Cables](#) category:*

*Click to view products by [Visual Communications Company](#) manufacturer:*

Other Similar products are found below :

[CL2-EXTEND](#) [96CB-E0605HAA1](#) [ZWF-915-J](#) [68801-4899](#) [68801-2112](#) [68801-2123](#) [68801-4124](#) [68801-4752](#) [68801-4850](#) [ZFS-CH144-12I](#) [96CB-E0405PCA3](#) [96CB-E0405PIC3](#) [96CB-E0605HAB1](#) [SSL11-J2LJ0-022A04](#) [CNXBE4218](#) [1-2058943-7](#) [1-2058943-8](#) [1-2083075-2](#) [1-2083080-1](#) [CNX310-120-X4124](#) [CNX\\_C\\_E\\_4\\_2\\_08](#) [CNXBE4118](#) [CNX\\_310\\_012\\_E\\_4\\_1\\_12](#) [2702306](#) [2702307](#) [SSL12-J4FJ0-000001](#) [180888-0405](#) [SSL12-J2LJ0-020F01](#) [180887-0430](#) [1705131](#) [180887-0410](#) [180778-0405](#) [1-2083029-8](#) [SSL12-J4LJ0-020H01](#) [180778-0430](#) [SSL12-P4LP0-M20H01](#) [SSL12-P4LP0-M20F01](#) [SSL12-P2LP0-M20F01](#) [SSL12-J4LJ0-020F01](#) [SSL11-J2LJ0-B22A04](#) [68801-4037](#) [68801-4039](#) [68801-4053](#) [68801-4055](#) [68801-4057](#) [68801-4059](#) [68801-4061](#) [960026](#) [2-2083030-2](#) [SSL12-J2LJ0-020A04](#)