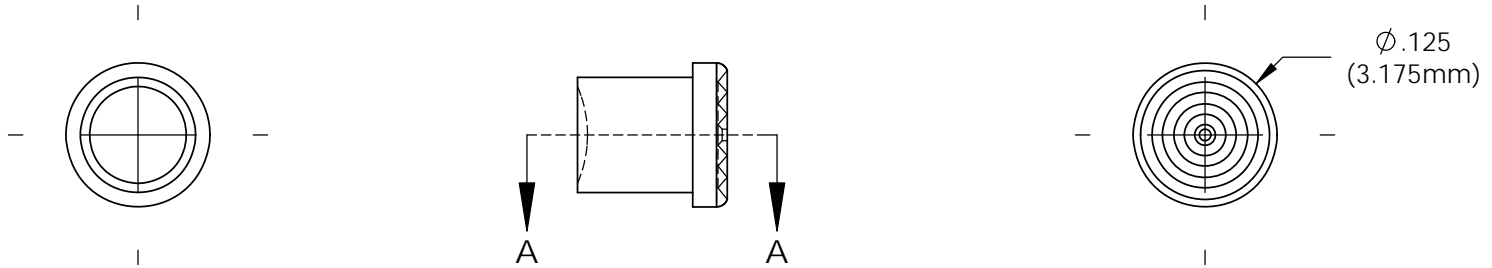


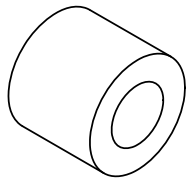
NOTES:

1. MOUNTING: Mounts in .102" (2.59mm)hole on 3/16" centers
2. Use Grommet Retainer RTN100 (sold seperately)
3. Custom lengths available upon request (Minimum order quantity may apply)
4. U.S. & Foreign Pat. Issued & Pend.

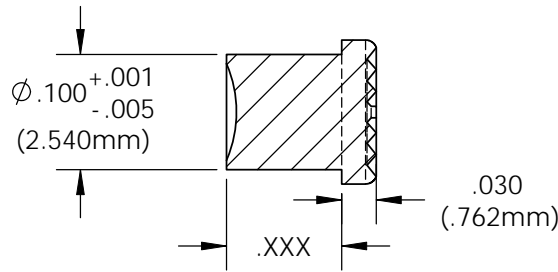
REVISIONS				
ECN #	REV	DESCRIPTION	DATE	INITIALS
	N/A	INITIAL RELEASE	10/27/06	SK
	1	ADD 150 LENGTH;RENAMED DWG;UPDATE FORMAT	10/24/08	JG
	2	ADDED 010 LENGTH	11/26/08	JG
	001	REVISED PER ECR 111009AZ01	4/23/10	KH



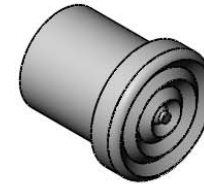
GROMMET RETAINER
(ORDER SEPERATELY)



RTN 100



SECTION A-A

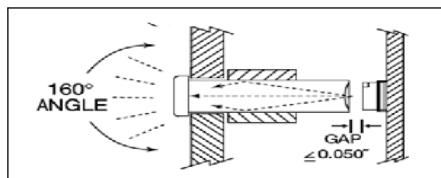


ORDERING CODE:

LMC XXX CTP

LENGTH CODE	
020	.200"
040	.400"
060	.600"
080	.800"
100	1.00"
120	1.20"

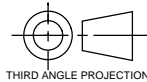
COLOR	
CTP	CLEAR



CUSTOM LENGTHS
AVAILABLE UPON
REQUEST
(SEE NOTE 3)

UNLESS OTHERWISE SPECIFIED
DIMENSIONS ARE IN INCHES:
ANGLES ± 1°
DECIMALS .X ± .020
.XX ± .010
FINISH .XXX ± .005

BREAK ALL CORNERS AND SHARP
EDGES .050 MAX



PROPRIETARY AND CONFIDENTIAL
THE INFORMATION CONTAINED IN THIS
DRAWING IS THE SOLE PROPERTY OF
VISUAL COMMUNICATIONS COMPANY, INC.
ANY REPRODUCTION IN PART OR AS A
WHOLE WITHOUT THE WRITTEN PERMISSION
OF VISUAL COMMUNICATIONS COMPANY, INC.
IS PROHIBITED.

MATERIAL
ACRYLIC
UL 94-HB

FINISH
SEE NOTES

APPROVALS	DATE
DRAWN K.Howard	4/2310
CHECKED DPZ	5/4/10

DO NOT SCALE DRAWING

VISUAL COMMUNICATIONS COMPANY
190 Bosstick Boulevard, Suite 101 San Marcos, CA 92069 USA
Phone (760) 560-1300 Fax (760) 560-1301 email vccsales@vcclite.com

TITLE:
2.5 MM MICROLITEPIPE

SIZE	DWG. NO.	REV
A	LMC XXX CTP	001

SCALE: 6:1 SHEET 1 OF 1

X-ON Electronics

Largest Supplier of Electrical and Electronic Components

Click to view similar products for [LED Light Pipes](#) category:

Click to view products by [Visual Communications Company](#) manufacturer:

Other Similar products are found below :

[1367627-1](#) [SLP3-300-450-F](#) [SLP3-400-450-R](#) [LPA-C011301S-6](#) [LPF-C011306S](#) [FLP25-1.95](#) [VLP-640-F](#) [LPA-C011301S-5.4](#) [LPA-C041301S-2](#) [LPA-R051171S-12](#) [LPA-S011331S](#) [515-1027-803F](#) [515-1217F](#) [SLP3-150-300-R](#) [SLP3-500-450-R](#) [515-1064-810F](#) [FLPV-SG](#) [BDL-1187](#) [7511A41](#) [7511A87-500](#) [FLPV-SBC](#) [5151064802F](#) [5151-192-0055-0DF](#) [LPF-R011340S](#) [515-1166-801F](#) [FLPF-6.0](#) [PM4-C1522-3.70](#) [LC-11.25](#) [CLP-1214](#) [515-1064-808F](#) [FLX3_05](#) [515-1192-0025-0DF](#) [HS LC-H-D2/R2XC1-2 54](#) [515-1192-80-3DF](#) [1282.2600](#) [1296.2004](#) [PBLP-1001-1](#) [SZ1-10.00-A220-F4P54](#) [SZ1-10.00-A220-F4P](#) [LC2-4.1](#) [1296.7042](#) [SF4-2.5-F5P](#) [PLP5-2-625-54](#) [FLP25-13.5](#) [1271.2002](#) [1272.0030](#) [1276.2004](#) [1281.1001-8MM](#) [1282.1300](#) [1296.1034](#)