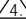
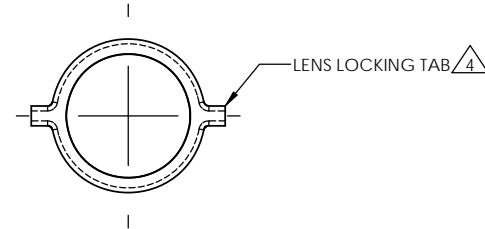
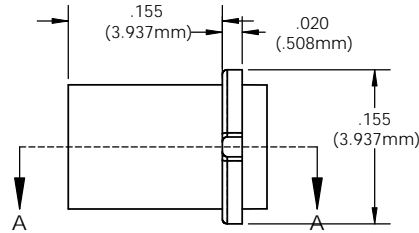


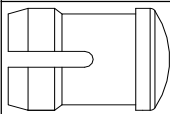
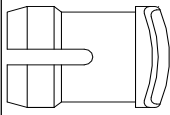
8 7 6 5 4 3 2 1

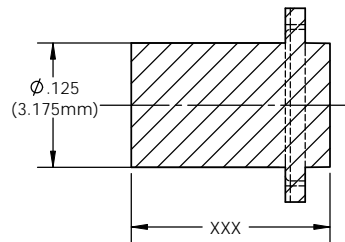
NOTES:

1. DESIGN: Lens mounts the Litepipe securely to display panel providing 180° viewing angle
2. MOUNTING: Panel mounting hole .171 (4.3mm) on 1/4" centers
3. PANEL THICKNESS: For SMB 200 & SMQ 250: 1/32" to 1/8"
4.  LENS LOCK: Insert Litepipe into lens aligning the tabs with the lens slot
5. Standoff used to adjust the height of a standard LED above the PCB and maintain a maximum .050" clearance between the Litepipe and LED.
6. Length is from front of panel to LED
7. Custom lengths available upon request (Minimum order quantity may apply)
8. U.S. & Foreign Pat. Issued & Pend.

REVISIONS				
ECN #	REV	DESCRIPTION	DATE	INITIALS
	N/A	INITIAL RELEASE	4/4/96	JS
	001	REVISED PER ECR111009AZ01	4/23/10	KH

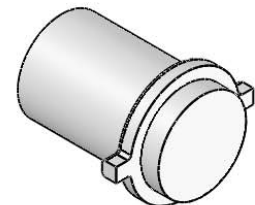
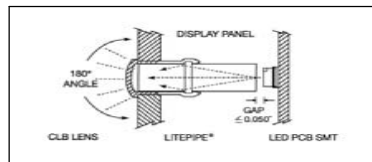


LENSES (ORDER SEPERATELY)

SMB 200

SMQ 250

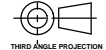


ORDERING CODE: **LSV XXX CTP**

LENGTH CODE		COLOR	
020	= .200"	CTP	CLEAR
040	.400		
060	.600		
080	.800		
100	1.000		
120	1.200		



CUSTOM LENGTHS
AVAILABLE UPON
REQUEST
(SEE NOTE 7)

<small>UNLESS OTHERWISE SPECIFIED DIMENSIONS ARE IN INCHES</small> ANGLES DECIMALS ±1° X ±.002 FINISH .XXX ±.010 .XXX ±.005 BREAK ALL CORNERS AND SHARP EDGES (R1/16")  THIRD ANGLE PROJECTION <small>THE INFORMATION CONTAINED IN THIS DRAWING IS THE SOLE PROPERTY OF VISUAL COMMUNICATIONS COMPANY, INC. AND IS LOANED TO YOU AS A SERVICE. IT IS TO BE USED ONLY FOR THE PROJECT AND FOR WHICH IT WAS SUBMITTED. VISUAL COMMUNICATIONS COMPANY, INC. IS NOT RESPONSIBLE FOR ANY OTHER USES.</small>	MATERIAL ACRYLIC (OPTICAL GRADE) U.L. 94-HB	VISUAL COMMUNICATIONS COMPANY, INC. 190 Bossick Boulevard, Suite 101 San Marcos, CA 92069 USA Phone (760) 560-1300 Fax (760) 560-1301 email vccsales@vccite.com
	FINISH SEE NOTES	TITLE: 3MM ROUND LITEPIPE
APPROVAL DRAWN K.Howard CHECKED DPZ	DATE 4/23/10 5/4/10	SIZE DWG. NO. B LSV XXX CTP
DO NOT SCALE DRAWING	SCALE: 8:1	REV 001 SHEET 1 OF 1

8 7 6 5 4 3 2 1

X-ON Electronics

Largest Supplier of Electrical and Electronic Components

Click to view similar products for [LED Light Pipes](#) category:

Click to view products by [Visual Communications Company](#) manufacturer:

Other Similar products are found below :

[1367627-1](#) [SLP3-300-450-F](#) [SLP3-400-450-R](#) [LPA-C011301S-6](#) [LPF-C011306S](#) [FLP25-1.95](#) [VLP-640-F](#) [LPA-C011301S-5.4](#) [LPA-R051171S-12](#) [LPA-S011331S](#) [515-1027-803F](#) [515-1217F](#) [SLP3-150-300-R](#) [SLP3-500-450-R](#) [515-1064-810F](#) [FLPV-SG](#) [BDL-1187](#) [7511A41](#) [7511A87-500](#) [FLPV-SBC](#) [5151064802F](#) [5151-192-0055-0DF](#) [LPF-R011340S](#) [515-1166-801F](#) [FLPF-6.0](#) [PM4-C1522-3.70](#) [LC-11.25](#) [CLP-1214](#) [515-1064-808F](#) [FLX3_05](#) [515-1192-0025-0DF](#) [HS LC-H-D2/ R2XC1-2 54](#) [515-1192-80-3DF](#) [1282.2600](#) [1296.2004](#) [PBLP-1001-1](#) [SZ1-10.00-A220-F4P54](#) [LC2-4.1](#) [1296.7042](#) [SF4-2.5-F5P](#) [PLP5-2-625-54](#) [FLP25-13.5](#) [1271.2002](#) [1272.0030](#) [1276.2004](#) [1281.1001-8MM](#) [1282.1300](#) [1296.1034](#) [1296.2022](#) [1296.2054](#)