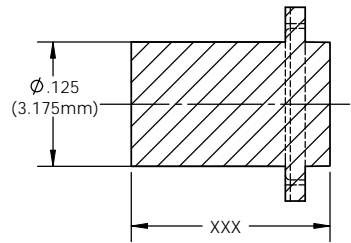
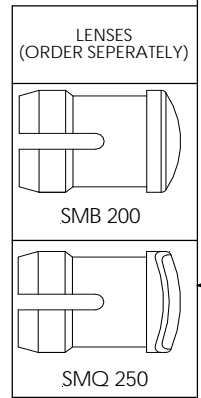
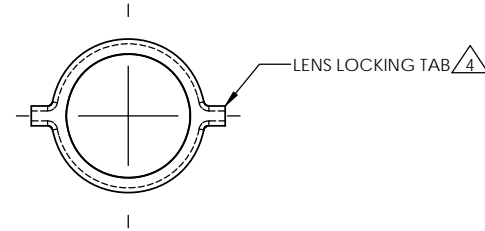
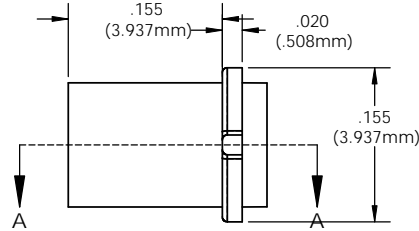


NOTES:

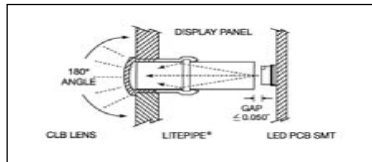
1. DESIGN: Lens mounts the Litepipe securely to display panel providing 180° viewing angle
2. MOUNTING: Panel mounting hole .171 (4.3mm) on 1/4" centers
3. PANEL THICKNESS: For SMB 200 & SMQ 250: 1/32" to 1/8"
4. **LENS LOCK:** Insert Litepipe into lens aligning the tabs with the lens slot
5. Standoff used to adjust the height of a standard LED above the PCB and maintain a maximum .050" clearance between the Litepipe and LED.
6. Length is from front of panel to LED
7. Custom lengths available upon request (Minimum order quantity may apply)
8. U.S. & Foreign Pat. Issued & Pend.

REVISIONS				
ECN #	REV	DESCRIPTION	DATE	INITIALS
	N/A	INITIAL RELEASE	4/4/96	JS
	001	REVISED PER ECR111009AZ01	4/23/10	KH



ORDERING CODE: **LSV XXX CTP**

LENGTH CODE		COLOR	
020	= .200"	CTP	CLEAR
040	.400		
060	.600		
080	.800		
100	1.000		
120	1.200		



UNLESS OTHERWISE SPECIFIED DIMENSIONS ARE IN INCHES		MATERIAL		VISUAL COMMUNICATIONS COMPANY, INC.	
ANGLES	DECIMALS	ACRYLIC (OPTICAL GRADE)		190 Bossick Boulevard, Suite 101 San Marcos, CA 92069 USA	
±1°	.X ±.002	U.L. 94-HB		Phone (760) 560-1300 Fax (760) 560-1301 email vccsales@vccite.com	
FINISH	.XXX ±.010 .XXX ±.005	FINISH		TITLE:	
BREAK ALL CORNERS AND SHARP EDGES (R1/16")		SEE NOTES		3MM ROUND LITEPIPE	
THIRD ANGLE PROJECTION		APPROVAL	DATE	SIZE	DWG. NO.
PROPRIETARY AND CONFIDENTIAL. THE INFORMATION CONTAINED IN THIS DRAWING IS THE SOLE PROPERTY OF VISUAL COMMUNICATIONS COMPANY, INC. REPRODUCTION IN PART OR AS A WHOLE WITHOUT THE WRITTEN PERMISSION OF VISUAL COMMUNICATIONS COMPANY, INC. IS PROHIBITED.		DRAWN K.Howard	4/23/10	B	LSV XXX CTP
		CHECKED DPZ	5/4/10	REV	001
		DO NOT SCALE DRAWING		SCALE: 8:1	SHEET 1 OF 1

CUSTOM LENGTHS AVAILABLE UPON REQUEST (SEE NOTE 7)

X-ON Electronics

Largest Supplier of Electrical and Electronic Components

Click to view similar products for [LED Light Pipes](#) category:

Click to view products by [Visual Communications Company](#) manufacturer:

Other Similar products are found below :

[1367627-1](#) [SLP3-300-450-F](#) [SLP3-400-450-R](#) [LPA-C011301S-6](#) [LPF-C011306S](#) [FLP25-1.95](#) [VLP-640-F](#) [LPA-C011301S-5.4](#) [LPA-C041301S-2](#) [LPA-R051171S-12](#) [LPA-S011331S](#) [515-1027-803F](#) [515-1217F](#) [SLP3-150-300-R](#) [SLP3-500-450-R](#) [515-1064-810F](#) [FLPV-SG](#) [BDL-1187](#) [7511A41](#) [7511A87-500](#) [FLPV-SBC](#) [5151064802F](#) [5151-192-0055-0DF](#) [LPF-R011340S](#) [515-1166-801F](#) [FLPF-6.0](#) [PM4-C1522-3.70](#) [LC-11.25](#) [CLP-1214](#) [515-1064-808F](#) [FLX3_05](#) [515-1192-0025-0DF](#) [HS LC-H-D2/R2XC1-2 54](#) [515-1192-80-3DF](#) [1282.2600](#) [1296.2004](#) [PBLP-1001-1](#) [SZ1-10.00-A220-F4P54](#) [SZ1-10.00-A220-F4P](#) [LC2-4.1](#) [1296.7042](#) [SF4-2.5-F5P](#) [PLP5-2-625-54](#) [FLP25-13.5](#) [1271.2002](#) [1272.0030](#) [1276.2004](#) [1281.1001-8MM](#) [1282.1300](#) [1296.1034](#)