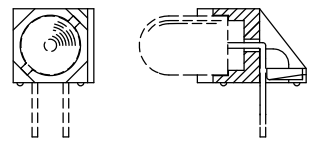
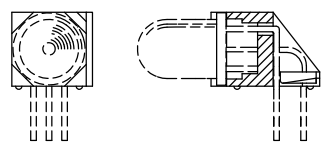
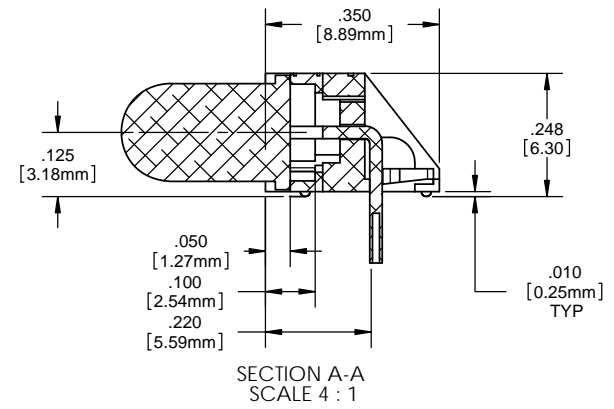
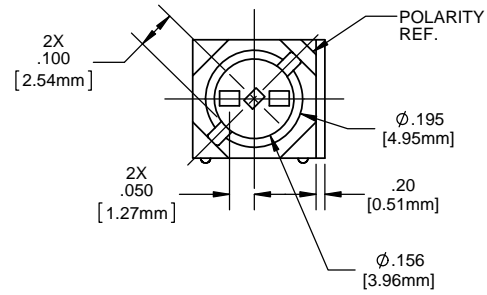
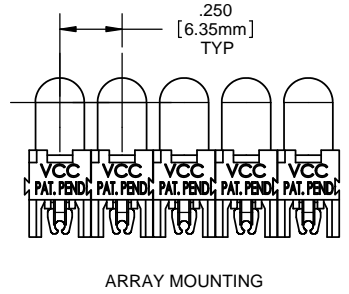
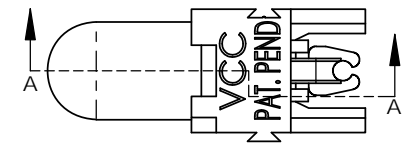
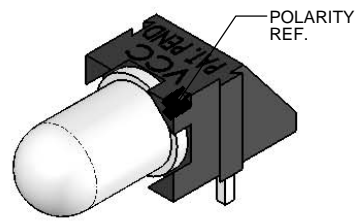
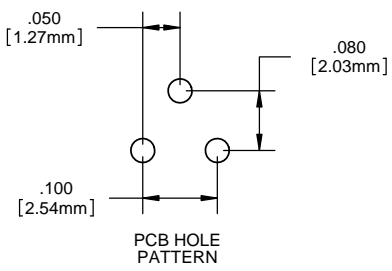


- NOTES:**
- LED MOUNTING: for 5mm LEDs - round or rectangular shape with or without flange. Bi-lead, standard .100 [2.54mm] lead spacing. Tri-lead, either .050 [1.27mm] or .100 [2.54mm] lead spacing. Both the bi-lead and tri-lead LEDs can also be combined in arrays with one another.
 - ASSEMBLY: Can be used as a single LED mount or banded together in an array with its dovetail interlocking feature. When banded together with the PCH 175 the LEDs are on .250 [6.35mm] centers.
 - MATERIAL: Housing - Nylon 6/6, U.L. 94 V0 Rating, Color black (unless otherwise spec.)
 - U.S. & Foreign Pat. Issued & Pend.
 - LED shown for illustrative purposes.

| REVISIONS | | | | |
|-----------|------|---------------------------------------------------|---------|----------|
| ECN# | REV. | DESCRIPTION | DATE | INITIALS |
| | 001 | REVISED PER ECR111009AZ01 | 6-20-10 | SMU |
| | 002 | CORRECTED FORMAT FOR "A" DRAWING & NEW TITLEBLOCK | 8/29/14 | MB |



PROPRIETARY AND CONFIDENTIAL
 THE INFORMATION CONTAINED IN THIS DRAWING IS THE SOLE PROPERTY OF VISUAL COMMUNICATIONS COMPANY, LLC. ANY REPRODUCTION IN PART OR AS A WHOLE WITHOUT THE WRITTEN PERMISSION OF VISUAL COMMUNICATIONS COMPANY, LLC IS PROHIBITED.

| | |
|-----------------------------------------------|--------|
| DIMENSION STYLE: INCHES [MM] | |
| GENERAL TOLERANCES UNLESS OTHERWISE SPECIFIED | |
| | INCHES |
| X | ± .020 |
| XX | ± .010 |
| XXX | ± .005 |
| ANGLE ± 1° | |
| BREAK ALL CORNERS AND SHARP EDGES .030 MAX | |
| THIRD ANGLE PROJECTION | |

| | |
|-----------------------------------------------------|---------|
| MATERIAL | |
| NYLON 6/6, UL 94-V0, BLACK (UNLESS OTHERWISE SPEC.) | |
| FINISH | |
| APPROVAL | DATE |
| DRAWN: SMU | 6/20/10 |
| CHECKED: DZ | 6/20/10 |
| DO NOT SCALE DRAWING | |

| | | | |
|---------------------------------------------------------------------------------------------------------------|--|--------------------------|--|
| 12780 DANIELSON CT, SUITE A, POWAY, CA. 92064 U.S.A PHONE: (800) 522-5546 EMAIL: vccsales@vccllite.com | | TITLE: | |
| | | P-C-LITE® RT ANGLE MOUNT | |
| PART # | | PCH_175 | |
| DRAWING # | | PCH 175 | |
| SCALE: 1:1 | | SHEET 1 OF 1 | |
| SIZE | | B | |
| REV | | 002 | |

X-ON Electronics

Largest Supplier of Electrical and Electronic Components

Click to view similar products for [LED Mounting Hardware](#) category:

Click to view products by [Visual Communications Company](#) manufacturer:

Other Similar products are found below :

[00624250](#) [00624750](#) [M2200](#) [7047](#) [990-4901-010](#) [990-8115-001](#) [CMP22](#) [M16-T1](#) [C-101](#) [L2K-L4GD](#) [L2K-L5XL](#) [LDN51-125SL/BT](#)
[00624500](#) [7046](#) [7056](#) [SN3486](#) [26-0053](#) [TC4-R-](#) [SLQ16](#) [LM6-2](#) [LM12-1](#) [LM10-1](#) [CM00624375](#) [CM00624900](#) [RNG132](#) [FIX-LEDH-10.5](#)
[FIX-LEDH-11](#) [FIX-LEDH-11.5](#) [FIX-LEDH-12](#) [FIX-LEDH-14](#) [FIX-LEDH-17](#) [FIX-LEDH-18](#) [FIX-LEDH-4](#) [FIX-LEDH-4.5](#) [FIX-LEDH-7.5](#)
[FIX-LEDH-9.5](#) [FIX-LEDS-1.5](#) [FIX-LEDS-2](#) [FIX-LEDS-3.5](#) [FIX-LEDT-11](#) [FIX-LEDT-20](#) [FIX-LEDT-26](#) [FIX-LEDT-5](#) [FIX-LEDT-9](#)
[SQLEDS2-4-26](#) [7382](#) [CNXDX4624](#) [CNXDX4608](#) [CNXDF4608](#) [4740](#)