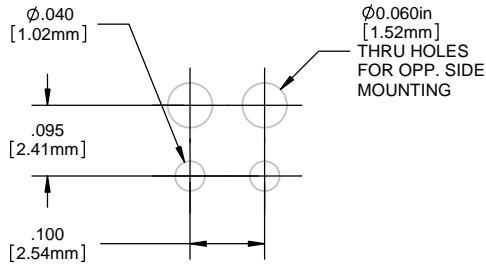
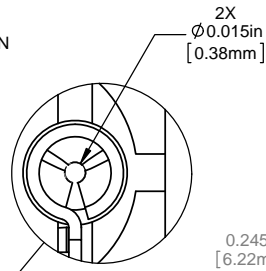
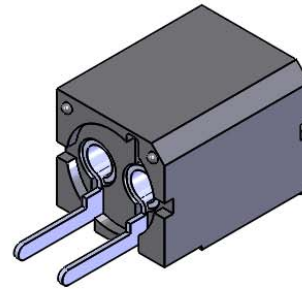


NOTES:

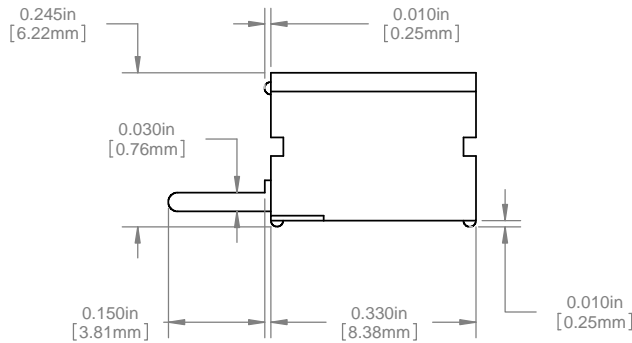
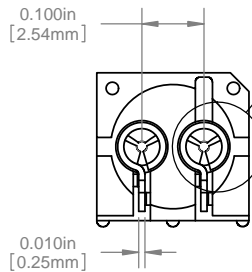
1. ROHS COMPLIANT
2. MATERIAL: HOUSING - NYLON 6/6, U.L.94-V0 RATING, BLACK (UNLESS OTHERWISE SPECIFIED)
CONTACTS - PHOSPHOR BRONZE, TIN PLATED
3. MOUNTING: SPACING ON .250" [6.35mm] CENTERS. OPTIONAL .060" [1.52mm] HOLES FOR OPPOSITE SIDE MOUNTING. SAME SIDE MOUNTING, DELETE THE .060" [1.52mm] HOLES (SEE PATTERN)
4. OPTO: STANDARD VISIBLE, IR LED, OR PHOTO DETECTOR WITH LEADS ON .100" [2.54mm] CENTERS
5. LED LEAD DIMENSIONS: MINIMUM .017" [.43mm] ROUND OR SQUARE SHAPE. MAXIMUM .030" [.76mm] THICKNESS - .040" [1.02mm] WIDTH
6. U.S. & FOREIGN PATENTS ISSUED



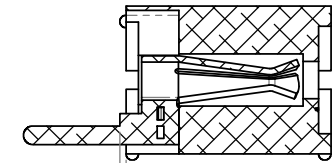
PCB HOLE PATTERN



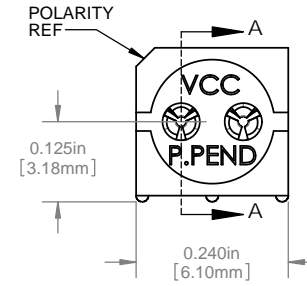
DETAIL B
SCALE 10 : 1



REVISIONS					
ECN #	REV.	DESCRIPTION	DATE	INITIALS	CHK'D
	001	REVISED PER ECR 111009AZ01	6/20/10	SMU	DZ
426	002	REVISED PER ECR 041212KH02	4/13/12	KH	ED



SECTION A-A



DIMENSION STYLE: INCHES / MM GENERAL TOLERANCES UNLESS OTHERWISE SPECIFIED		APPROVAL		DATE
INCHES	MM	DRAWN	SMU	6/20/10
X	± .020	CHECKED	DZ	6/20/10
XX	± .010			
XXX	± .005			
ANGLE ± 1°				
BREAK ALL CORNERS AND SHARP EDGES 60° MAX				
THIRD ANGLE PROJECTION		MATERIAL		
PROPRIETARY AND CONFIDENTIAL		SEE NOTES		
THE INFORMATION CONTAINED IN THIS DRAWING IS THE SOLE PROPERTY OF VISUAL COMMUNICATIONS COMPANY, INC. ANY REPRODUCTION IN PART OR AS A WHOLE WITHOUT THE WRITTEN PERMISSION OF VISUAL COMMUNICATIONS COMPANY, INC IS PROHIBITED.		FINISH		
		SEE NOTES		
DO NOT SCALE DRAWING				

MATERIAL		SEE NOTES	
FINISH		SEE NOTES	

VCC
12780 DANIELSON CT, SUITE A, POWAY, CA 92064 U.S.A
PHONE: (800) 522-5546 EMAIL: vccsales@vcc-lite.com

TITLE:
P-C-LITE® VERTICAL MOUNT

SIZE	DWG. NO.	REV
B	PCV 220	002

SCALE: 5:1 SHEET 1 OF 1

ORDERING CODE : **PCV 220**

X-ON Electronics

Largest Supplier of Electrical and Electronic Components

Click to view similar products for [LED Mounting Hardware](#) category:

Click to view products by [Visual Communications Company](#) manufacturer:

Other Similar products are found below :

[00624250](#) [00624750](#) [M2200](#) [7047](#) [990-4901-010](#) [990-8115-001](#) [CMP22](#) [M16-T1](#) [C-101](#) [L2K-L4GD](#) [L2K-L5XL](#) [LDN51-125SL/BT](#)
[00624500](#) [7046](#) [7056](#) [SN3486](#) [26-0053](#) [CM00624375](#) [CM00624900](#) [RNG132](#) [FIX-LEDH-10.5](#) [FIX-LEDH-11](#) [FIX-LEDH-11.5](#) [FIX-](#)
[LEDH-12](#) [FIX-LEDH-14](#) [FIX-LEDH-17](#) [FIX-LEDH-18](#) [FIX-LEDH-4](#) [FIX-LEDH-4.5](#) [FIX-LEDH-7.5](#) [FIX-LEDH-9.5](#) [FIX-LEDS-1.5](#) [FIX-](#)
[LEDS-2](#) [FIX-LEDS-3.5](#) [FIX-LEDT-11](#) [FIX-LEDT-20](#) [FIX-LEDT-26](#) [FIX-LEDT-5](#) [FIX-LEDT-9](#) [SQLEDS2-4-26](#) [7382](#) [CNXDX4624](#)
[CNXDX4608](#) [CNXDF4608](#) [4740](#) [CNXCE4124](#) [CNXCE4112](#) [CNX460-X02-4-1-08](#) [CNX440-X02-4-1-24](#) [CNX440-X02-4-1-18](#)