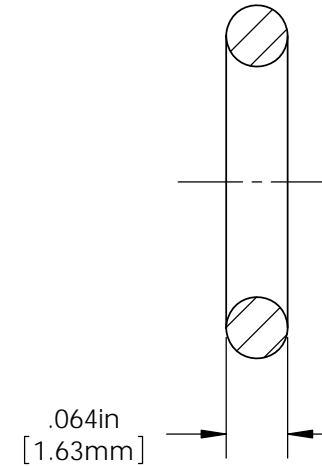
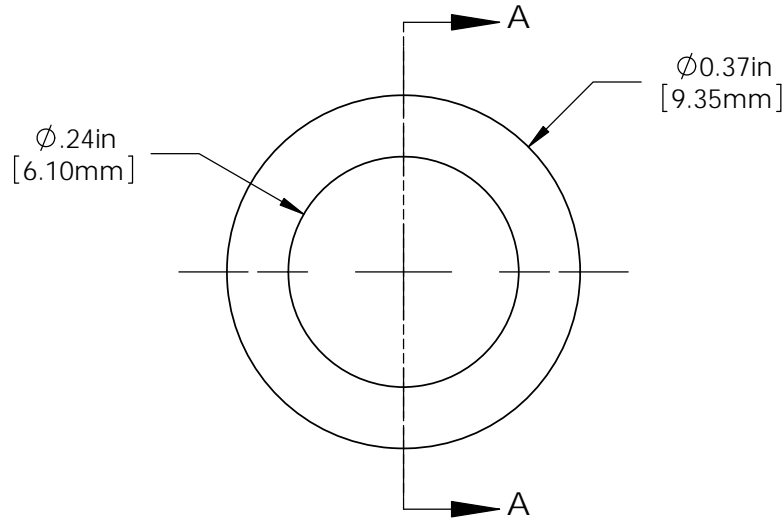


**NOTES:**

1. OPERATING TEMPERATURE: -65 °F TO +300 °F
2. U.S. & FOREIGN PATENT ISSUED

REVISIONS					
ECN #	REV.	DESCRIPTION	DATE	INITIALS	CHK'D
	N/A	INITIAL RELEASE	7/12/01	JS	N/A
	001	REVISED PER ECR111009AZ01	2/12/10	KH	DPZ



SECTION A-A



ISOMETRIC VIEW

<small>DIMENSION STYLE: INCHES (MM) GENERAL TOLERANCES UNLESS OTHERWISE SPECIFIED</small> <table border="1"> <thead> <tr> <th></th> <th>INCHES</th> <th>MM</th> </tr> </thead> <tbody> <tr> <td>X</td> <td>± .020</td> <td>± .508</td> </tr> <tr> <td>.XX</td> <td>± .010</td> <td>± .254</td> </tr> <tr> <td>.XXX</td> <td>± .005</td> <td>± .127</td> </tr> </tbody> </table>		INCHES	MM	X	± .020	± .508	.XX	± .010	± .254	.XXX	± .005	± .127	APPROVAL	DATE	
		INCHES	MM												
X	± .020	± .508													
.XX	± .010	± .254													
.XXX	± .005	± .127													
DRAWN KHOWARD	2/12/11														
CHECKED DPZ	2/12/11		<small>190 BOSSTICK BLVD. SUITE 101 SAN MARCOS, CA 92069 U.S.A PHONE: (760) 560-1300, FAX: (760) 560-1301 EMAIL: vccsales@vcclite.com</small>												
<small>ANGLE ± 1°</small> 	MATERIAL (EPDM) ETHYLENE PROPYLENE DIENE RUBBER, BLACK		TITLE: <b>LENS SPACER SPC 060</b>												
<small>THIRD ANGLE PROJECTION</small> <small>PROPRIETARY AND CONFIDENTIAL</small> <small>THE INFORMATION CONTAINED IN THIS DRAWING IS THE SOLE PROPERTY OF VISUAL COMMUNICATIONS COMPANY, INC. ANY REPRODUCTION IN PART OR AS A WHOLE WITHOUT THE WRITTEN PERMISSION OF VISUAL COMMUNICATIONS COMPANY, INC IS PROHIBITED.</small>	FINISH  NONE	SIZE DWG. NO.	REV												
		<b>A</b> SPC 060	<b>001</b>												
	DO NOT SCALE DRAWING	SCALE: 5:1	SHEET 1 OF 1												

## X-ON Electronics

Largest Supplier of Electrical and Electronic Components

*Click to view similar products for [LED Mounting Hardware](#) category:*

*Click to view products by [Visual Communications Company](#) manufacturer:*

Other Similar products are found below :

[00624250](#) [00624750](#) [M2200](#) [7047](#) [990-4901-010](#) [990-8115-001](#) [CMP22](#) [M16-T1](#) [C-101](#) [L2K-L4GD](#) [L2K-L5XL](#) [LDN51-125SL/BT](#)  
[00624500](#) [7046](#) [7056](#) [SN3486](#) [26-0053](#) [TC4-R-](#) [SLQ16](#) [LM6-2](#) [LM12-1](#) [LM10-1](#) [CM00624375](#) [CM00624900](#) [RNG132](#) [FIX-LEDH-10.5](#)  
[FIX-LEDH-11](#) [FIX-LEDH-11.5](#) [FIX-LEDH-12](#) [FIX-LEDH-14](#) [FIX-LEDH-17](#) [FIX-LEDH-18](#) [FIX-LEDH-4](#) [FIX-LEDH-4.5](#) [FIX-LEDH-7.5](#)  
[FIX-LEDH-9.5](#) [FIX-LEDS-1.5](#) [FIX-LEDS-2](#) [FIX-LEDS-3.5](#) [FIX-LEDT-11](#) [FIX-LEDT-20](#) [FIX-LEDT-26](#) [FIX-LEDT-5](#) [FIX-LEDT-9](#)  
[SQLEDS2-4-26](#) [7382](#) [CNXDX4624](#) [CNXDX4608](#) [CNXDF4608](#) [4740](#)