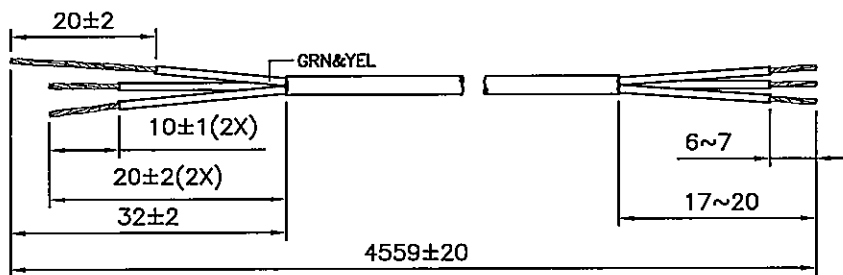
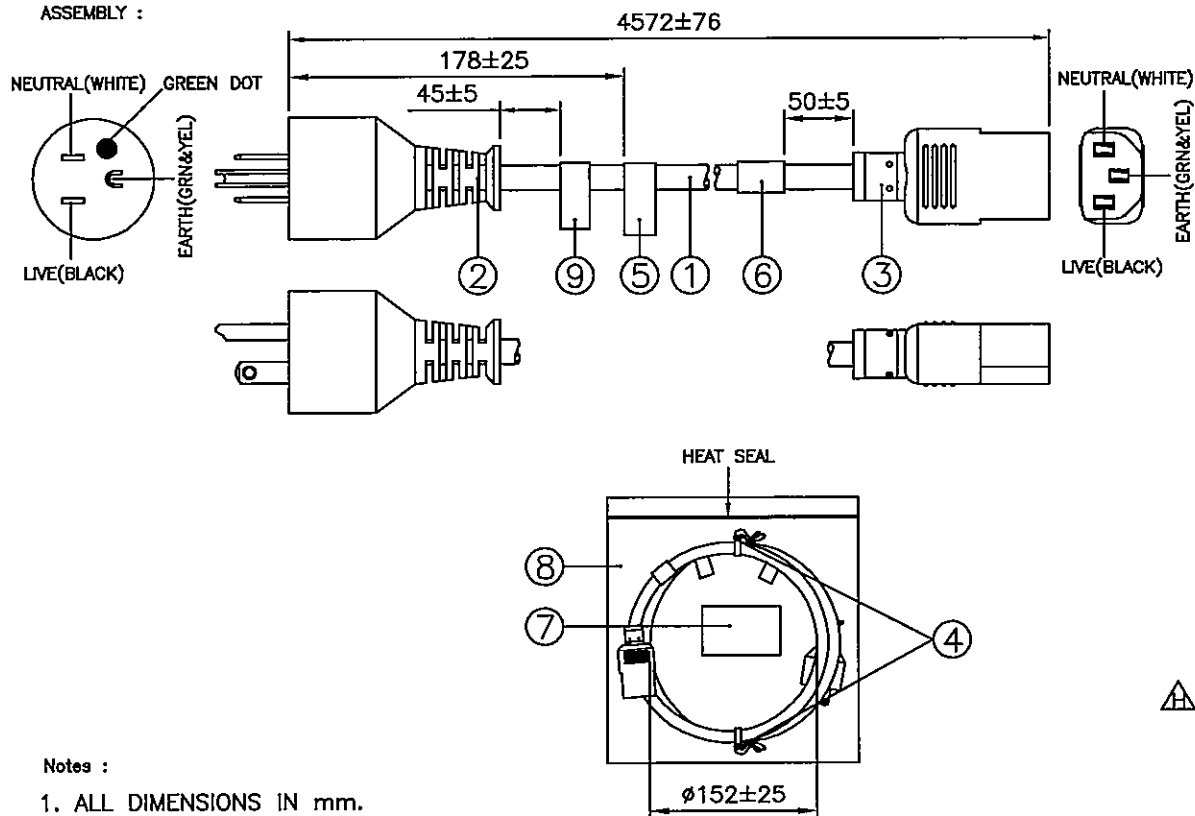


DRAWING NUMBER: 1108757
 REVISION: H

CABLE CUTTING
 CABLE SOURCE :
 1. BAO HING(SHENZHEN).
 2. TONG YUAN(SHENZHEN).



ASSEMBLY :



- Notes :
1. ALL DIMENSIONS IN mm.
 2. PLUG AND CONNECTOR MARKING : REFER TO MARKING DRAWING NO. : VP-0111C AND VC-0157 RESPECTIVELY.
 3. PLUG AND CONNECTOR DETAILS : REFER TO PRODUCT DRAWING NO. : P-0048 AND C-0230 RESPECTIVELY.
 4. LABEL DETAILS : REFER TO LABEL DRAWING NO. : VL-0356 AND VL-0325 RESPECTIVELY.
 5. THIS PART CAN BE MANUFACTURED AT ANY LOCATION WHICH HAS SAFETY APPROVAL.

REV.	ECR REF. NO.	DESCRIPTION	DATE
G	150232	CHANGE PLUG MARKING DWG. NO. FM. 'VP-0111' TO 'VP-0111C'.	15/05/15
H	190054	UPDATE CABLE DESCRIPTION IN BOM AS SHOWN.	07/03/19

9	LABEL PP WARNING 130X25MM	6101409	1
8	BAG LDPE 203X305X0.05	904035	1
7	PRINTED LABEL	VL-0325	1
6	PRINTED LABEL	VL-0356	1
5	UL LABEL 1PCS 60.3X12.3MM (FOR VIS/VOLEX INC)	6101205	1
4	8" PE TIE GREY	6310079	2
	PVC IP50G RAL7037 GREY (NL83003B)	4100613	-
3	MOLDED CONNECTOR 386A (13A 125V)	386A-1	1
2	MOLDED PLUG PS206 (13A 125V)	PS206-CS	1
1	SJT 16/3 60°C BWGY RAL7037 GREY LF (26/0.254/OD8.6/PP/INDENT)	1910260	4.559M

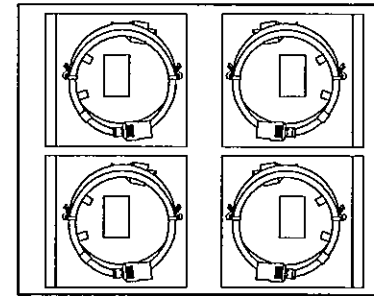
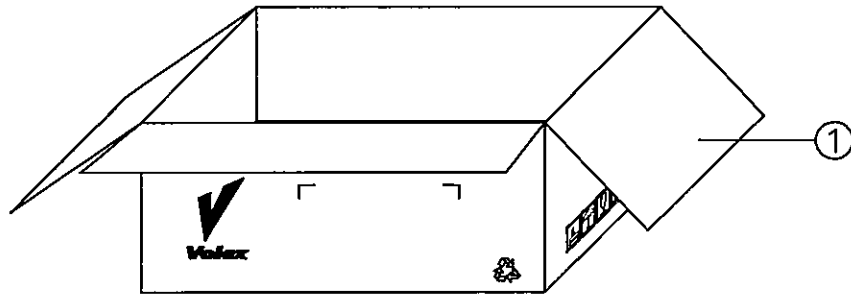
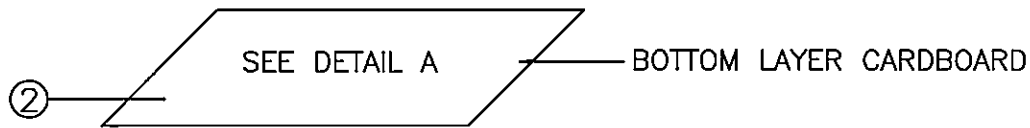
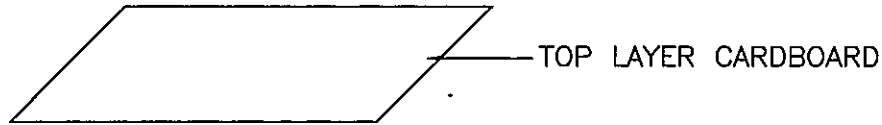
S/N	DESCRIPTION	ITEM NUMBER	QTY
TITLE : NORTH-AMERICAN POWER SUPPLY CORDSET (RoHS COMPLIANT)		PAGE : 1/2	
CUSTOMER : VNA/VOLEX INC		HG12-133-07	
CUSTOMER PART NUMBER : 17966 8 S15		DWG. TYPE	
F/G CODE : 17966 8 S15		SPEC NO.: ---	
SALES : N.A.	QA : N.A.	ENGRG : Feng	CHECKED BY : Jin m
DATE : N.A.	DATE : N.A.	DATE : 11/03/19	DATE : 07/03/19
		DRAWN BY : JIN JU	
		Volex (Asia) Pte Ltd	
<small>Confidential property of Volex. Information contained herein shall not be disclosed to others, reproduced or used for any other purposes except as authorized in writing by an authorized official of Volex Asia.</small>			

DRAWING NUMBER :

1108757

PACKAGING INSTRUCTION

1. ALL CORDSETS LAYOUT AS DETAIL.
2. PACKAGING : 30 PCS PER CARTON.



DETAIL A

NOTE :

1.) ALL DIMENSIONS IN mm.

2	CARDBOARD T33 475X370	901190	0.0667
1	CTN D/W 490X385X290	901189	0.0334
S/N	DESCRIPTION	ITEM NUMBER	QTY
REVISION	H	TITLE : PACKAGING SPEC.	
PAGE	2/2		
SCALE	N.T.S.		
REFERENCE :		<i>Volex (Asia) Pte Ltd</i>	
DESCRIPTION : CARTON BOX		<small>Confidential property of Volex. Information contained herein shall not be disclosed to others, reproduced or used for any other purposes except as authorized in writing by an authorized official of Volex Asia.</small>	

X-ON Electronics

Largest Supplier of Electrical and Electronic Components

Click to view similar products for [AC Power Leads](#) category:

Click to view products by [Volex](#) manufacturer:

Other Similar products are found below :

[1300000023](#) [312033-01](#) [YP-61+YC12](#) [P28818-M2](#) [YP21A+YC13](#) [FTP-629Y603](#) [1702002600](#) [1700001947](#) [J2014004L001-CC SHELF](#)
[IL13-EU1-H05-3100-300-S](#) [P28976-M45](#) [BB-3271V86](#) [W-98452](#) [W-98453](#) [MWOC-PCA-3-3-2](#) [P29844-M5](#) [P29844-M10](#) [3-100-354](#) [W-](#)
[99245](#) [W-99246](#) [W-99249](#) [W-99251](#) [W-99252](#) [W-99253](#) [W-99254](#) [W-99257](#) [W-99260](#) [W-99261](#) [W-99262](#) [W-99265](#) [W-99267](#) [W-99269](#)
[W-99270](#) [W-99272](#) [W-99280](#) [W-99282](#) [S144720002](#) [S002020062](#) [S007220315](#) [S007220344](#) [S007220345](#) [S007220303](#) [S007220307](#)
[P28818-M6](#) [1019123](#) [387005324](#) [59903000000](#) [VL-0136-14-200](#) [387007040](#) [387006821](#)