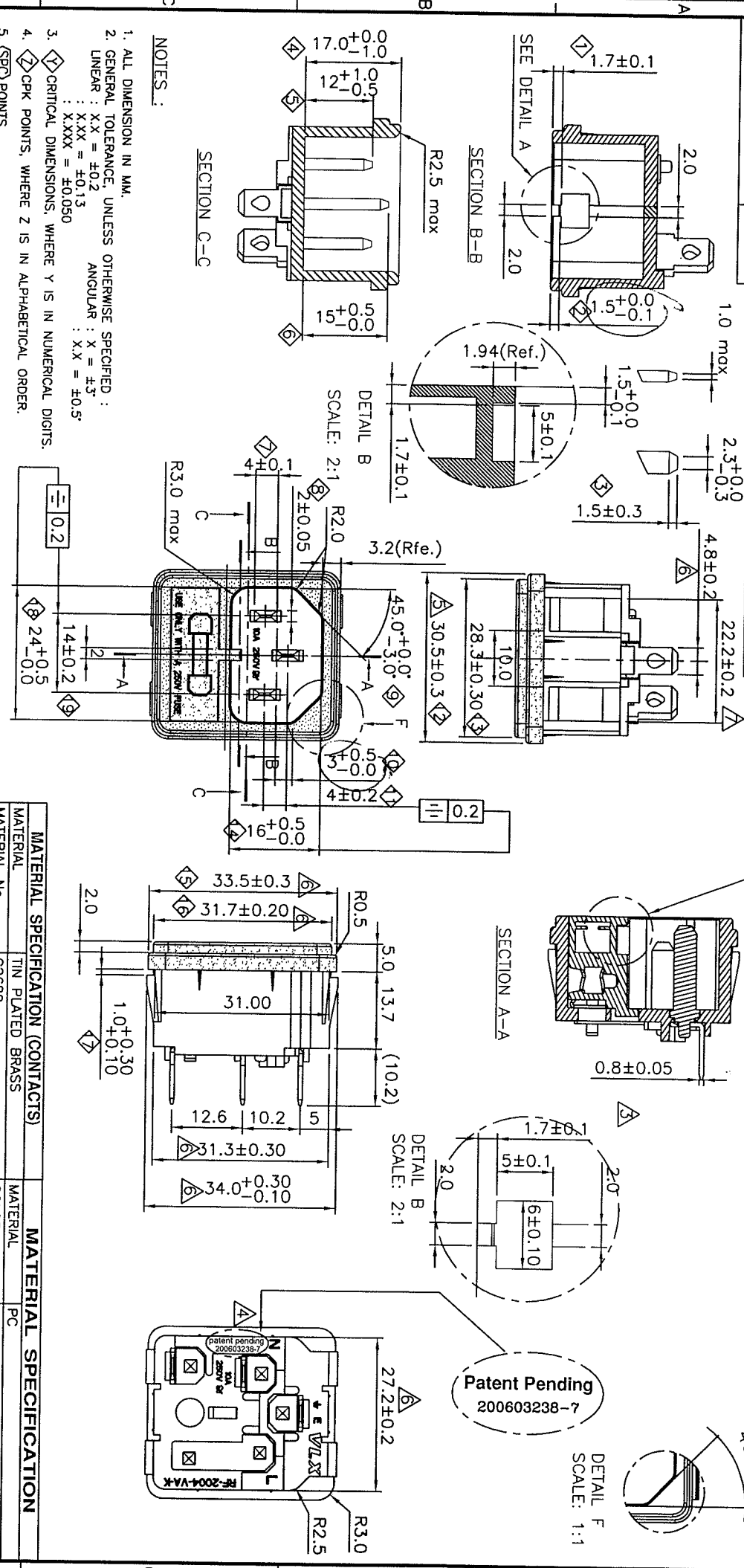


DRAWING NUMBER : MP-XXXXX
 REVISION : 7

ENGINEERING DETAILS



- NOTES :
1. ALL DIMENSION IN MM.
 2. GENERAL TOLERANCE, UNLESS OTHERWISE SPECIFIED :
 LINEAR : XX = ±0.2
 ANGULAR : X = ±3°
 : XXX = ±0.13
 : XXXX = ±0.050
 : XXXX = ±0.5°
 3. CRITICAL DIMENSIONS, WHERE Y IS IN NUMERICAL DIGITS.
 4. CRITICAL POINTS, WHERE Z IS IN ALPHABETICAL ORDER.
 5. (SPO) POINTS.
 6. MAX. 0.20MM ALLOWABLE PLASTICS FLASH ALL ROUND.
 7. MAX. 0.05MM ALLOWABLE METALLIC BURR ALL ROUND.
 8. EVERY LOT MUST COME WITH COC DECLARING THE SUPPLIER AND TYPE NUMBER OF THE MATERIAL USED.

| DRAWN : | XIA YX | REV | ECR | BY | DATE | REV | ECR | BY | DATE |
|------------|--------------------|-----|----------|-----|----------|-----|----------|-----|----------|
| RELEASED : | 16/07/06 | 1 | PS025-06 | XIA | 07/09/06 | 5 | PS025-06 | XIA | 06/11/06 |
| CHECKED : | <i>[Signature]</i> | 2 | PS025-06 | XIA | 15/09/06 | 6 | PS025-06 | XIA | 06/11/06 |
| APPROVED : | <i>[Signature]</i> | 3 | PS025-06 | XIA | 21/09/06 | 7 | PS025-06 | XIA | 07/11/06 |
| | | 4 | PS025-06 | XIA | 19/10/06 | | | | |

| MATERIAL SPECIFICATION (CONTACTS) | | MATERIAL SPECIFICATION | |
|-----------------------------------|------------------|------------------------|---------|
| MATERIAL | TIN PLATED BRASS | MATERIAL | PC |
| MATERIAL No. | C2680 | COLOR | BLACK |
| ELONGATION | - | FINISHING | - |
| TENSILE STRENGTH | 36~45kgf/mm2 | MATERIAL No. | 6485 |
| HARDNESS VALUE | 1/2H | UL LICENSE No. | E41613 |
| PLATING THICKNESS | XXXX | FLAMMABILITY | UL94V-0 |
| | | SUPPLIER | BARER |

TITLE : POWER INLET FUSE HOLDER(PS025-06) RF-2004-VA-K

ITEM NO. : UL/CSA/IEC

FILENAME : F:\DATABASE\ENGRG\ACAD014\COMPONENT\H-XX

SCALE : 1 : 1

PROJ. : THIRD ANGLE

PAGE : 1/1

Voilex

Confidential property of Voilex. Information contained herein shall not be disclosed to others, reproduced or used for any other purpose except as authorized in writing by an authorized official of Voilex Asia.

X-ON Electronics

Largest Supplier of Electrical and Electronic Components

Click to view similar products for [AC Power Entry Modules](#) category:

Click to view products by [Volex](#) manufacturer:

Other Similar products are found below :

[0098.0050](#) [6167.0002](#) [6609100-2](#) [7-6609955-2](#) [FKI2-50-6/M5](#) [FN361-6-06](#) [FN389-4-22](#) [FN9226B-6-02](#) [FN9233S1-10-06](#) [FN9233S1-8-06](#)
[FN9233S1B-8-06](#) [FN9233S1R-1-06](#) [FN9233S1R-12-06](#) [FN9233SB-1-06](#) [FN9233SB-12-06](#) [FN9233SB-8-06](#) [FN9233SR-10-06](#) [FN9244B-15-06HI](#) [FN9244EB-3-06](#) [FN9244EB-8-06](#) [FN9244ER-15-06](#) [FN9244ER-8-06](#) [FN9244ES1-8-06](#) [FN9244ESB-8-06](#) [FN9244R-12-06](#)
[FN9244S1-12-06](#) [FN9244S1R-3-06](#) [FN9244SB-8-06](#) [FN9244SR-6-06](#) [FN9244U-3-06](#) [FN9244U-8-06](#) [8-6609940-2](#) [PE00SSSXB](#) [Fuse-H-EUR-1](#) [Fuse-H-USA-1](#) [PM00XD000](#) [A-0701-HT-H](#) [15EJMS8](#) [1-6609941-2](#) [200JM6-2](#) [CA121003-6](#) [SK-1015\(F1-5\)](#) [161-R3015-E](#) [1-6609153-2](#) [FN323-1-05](#) [FN9233B-8-06](#) [FN9233EB-1-06](#) [FN9233ES1R-10-06](#) [FN9233R-12-06](#) [FN9233S-10-06](#)