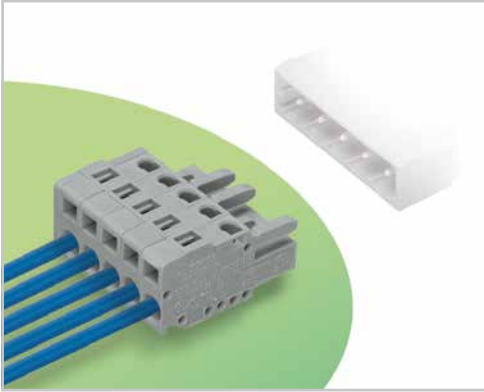


Female Connectors

Pin Spacing: 5 mm, 5.08 mm

MCS MIDI Classic



- Universal connection for all conductor types
- Easy cable pre-assembly and on-unit wiring via vertical and horizontal CAGE CLAMP® actuation
- With coding fingers
- Integrated test ports

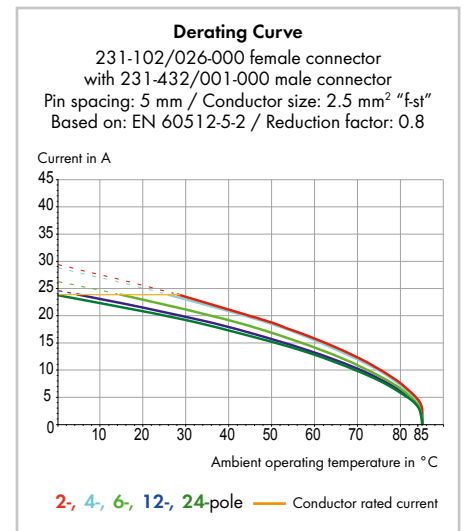
Technical data:	Straight female connectors:			Angled female connectors:		
	5 mm/5.08 mm 0.197 in./0.2 in.			5 mm/5.08 mm 0.197 in./0.2 in.		
Pin Spacing	IEC/EN 60664-1			IEC/EN 60664-1		
Ratings per						
Overtoltage category	III	III	II	III	III	II
Pollution degree	3	2	2	3	2	2
Rated voltage	320 V	320 V	630 V	320 V	320 V	630 V
Rated surge voltage	4 kV	4 kV	4 kV	4 kV	4 kV	4 kV
Nominal current	16 A	16 A	16 A	14 A	14 A	14 A
Approvals per	UL/CSA			UL/CSA		
Use group UL 1059	B	C	D	B	C	D
Rated voltage	300 V	-	300 V	300 V	-	300 V
Nominal current UL	15 A	-	10 A	15 A	-	10 A
Nominal current CSA	15 A	-	10 A	15 A	-	10 A

The MCS MIDI connection system is UL 1977 approved and capable of up to 600 V for factory wiring.

Conductor data:	
Connection technology	CAGE CLAMP®
Conductor size: solid	0.08 ... 2.5 mm ²
Conductor size: fine-stranded	0.08 ... 2.5 mm ²
Conductor size: fine-stranded	0.25 ... 1.5 mm ² (with insulated ferrule)
Conductor size: fine-stranded	0.25 ... 2.5 mm ² (with uninsulated ferrule)
AWG	28 ... 12 12: THHN, THWN
Strip length	8 ... 9 mm / 0.31 ... 0.35 in

Material data:	
Material group	I
Insulating material	Polyamide 66 (PA 66)
Flammability class per UL 94	V0
Lower/Upper limit temperature	-60 °C / +85 °C
Clamping spring material	Chrome nickel spring steel (CrNi)
Contact material	Copper alloy
Contact plating	tin-plated
MCS connectors are also available upon request with gold-plated or partially gold-plated contact surfaces.	
Depending on the version requested, "item no. suffix ... /010-000" is added to the "basic item no."	

MCS - MULTI CONNECTION SYSTEM includes connectors without breaking capacity in accordance with DIN EN 61984.
When used as intended, these connectors shall not be connected/disconnected when live or under load. The circuit design should ensure header pins, which can be touched, are not live when unmated.



MCS MIDI accessories:	Page:
Marking accessories	570
Operating tools	470
Direct marking	362
Comb-style jumper bars	480
Insulation stop	473
Test plug adapter	478
Test plug	568
Screws	576
Strain relief housings	476
Strain relief plates	474

X-ON Electronics

Largest Supplier of Electrical and Electronic Components

Click to view similar products for [Wago manufacturer:](#)

Other Similar products are found below :

[734-190](#) [750-460](#) [209-574](#) [231-118/026-000](#) [231-620/019-000](#) [250-209](#) [2734-108/037-000](#) [280-438](#) [285-135](#) [231-446/001-000_NR](#) [232-216/026-000](#) [264-726](#) [2010-1207](#) [2001-1207](#) [830-800/000-305](#) [811-421](#) [2006-1661](#) [750-960](#) [750-530](#) [210-197](#) [248-504](#) [731-138/048-000](#) [750-604](#) [773-108](#) [793-5666](#) [811-317](#) [811-411](#) [857-415](#) [255-406](#) [280-675](#) [285-407](#) [0745-0302](#) [2060-473/998-404](#) [830-1000/000-000](#) [2000-5372](#) [769-412](#) [221-525](#) [852-1417](#) [2636-3105/020-000](#) [2009-110](#) [231-332/108-000](#) [281-512/281-501](#) [750-421](#) [750-842](#) [769-615](#) [753-437](#)
[2009-145](#) [852-1322](#) [852-1328](#) [852-1605](#)