

Printview: Female connector; 3-pole; Pin spacing 7.5 mm / 0.295 in; codable; only 1 locking latch; with coding finger; with latch - Item No.: 231-203/026-000



Female connector; 3-pole; Pin spacing 7.5 mm / 0.295 in; codable; only 1 locking latch; with coding finger; with latch

Item No.: 231-203/026-000



Female connector; 3-pole; Pin spacing 7.5 mm / 0.295 in; codable; only 1 locking latch; with coding finger; with latch

Marking

RoHS ✓
Compliant

Business data

Supplier	WAGO
Item no.	231-203/026-000
GTIN / EAN	4044918343954
Content	1
Order amount	100
Customer item number	

Notes

Item description: Universal connection for all conductor types Easy cable pre-assembly and on-unit wiring via vertical and horizontal CAGE CLAMP® actuation Integrated test ports Coding option available

Technical data

Miscellaneous

Packaging type	BOX
Ratings per	IEC/EN 60664-1
Rated voltage (III / 3) [V]	500 [V]
Rated impulse voltage (III / 3) [kV]	6 [kV]

Printview: Female connector; 3-pole; Pin spacing 7.5 mm / 0.295 in; codable; only 1 locking latch; with coding finger; with latch - Item No.: 231-203/026-000

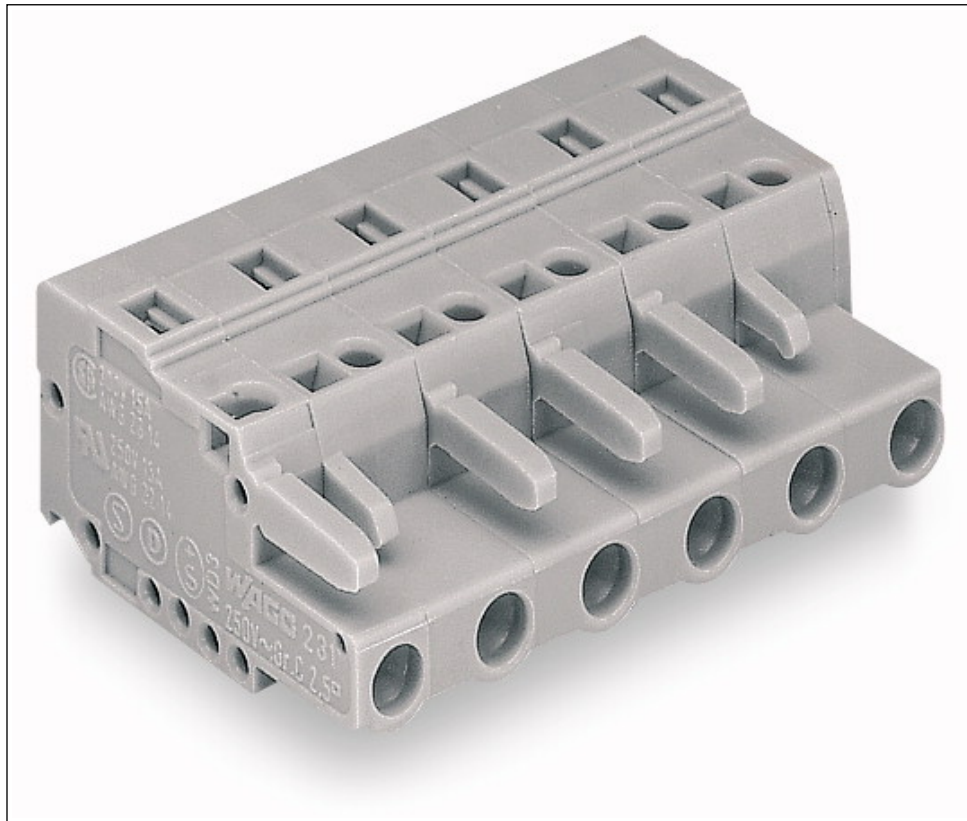
Technical data	
<i>Rated voltage (III/2) [V]</i>	630 [V]
<i>Rated impulse voltage (III / 2) [kV]</i>	6 [kV]
<i>Rated voltage (II / 2) [V]</i>	1000 [V]
<i>Rated impulse voltage (II / 2) [kV]</i>	6 [kV]
<i>Rated current [A]</i>	16 [A]
<i>Legend (ratings)</i>	(III / 2) Overvoltage category III / Pollution degree 2
<i>Approvals per</i>	UL 1059
<i>Rated voltage UL (Use Group B) [V]</i>	300 [V]
<i>Rated current UL (Use Group B) [A]</i>	15 [A]
<i>Rated voltage UL (Use Group D) [V]</i>	300 [V]
<i>Rated current UL (Use Group D) [A]</i>	10 [A]
<i>Rated voltage CSA (Use Group B) [V]</i>	300 [V]
<i>Rated current CSA (Use Group B) [A]</i>	15 [A]
<i>Rated voltage CSA (Use Group D) [V]</i>	300 [V]
<i>Rated current CSA (Use Group D) [A]</i>	10 [A]
<i>No. of poles</i>	3
<i>Total number of connection points</i>	3
<i>Total number of potentials</i>	3
<i>Number of connection types</i>	1
<i>Number of levels</i>	1
<i>Connection technology</i>	CAGE CLAMP®
<i>Number of connection points (connection type)</i>	1
<i>Actuation type</i>	Operating tool
<i>Solid conductor</i>	0.08 ... 2.5 mm ² / 28 ... 12 AWG
<i>Fine-stranded conductor</i>	0.08 ... 2.5 mm ² / 28 ... 12 AWG
<i>Fine-stranded conductor with ferrule with plastic collar</i>	0.25 ... 1.5 mm ² / ...
<i>Fine-stranded conductor with ferrule without plastic collar</i>	0.25 ... 2.5 mm ² / ...
<i>Strip length</i>	8 ... 9 mm / 0.31 ... 0.35 Inch
<i>Pin spacing</i>	7.5 mm (0.295 in)
<i>Width</i>	21.5 mm / 0.846 Inch
<i>Height</i>	14.3 mm / 0.563 Inch
<i>Depth</i>	26.45 mm / 1.041 Inch
<i>Contact type (pluggable connector)</i>	Female connector/socket
<i>Connector connection type</i>	for conductors

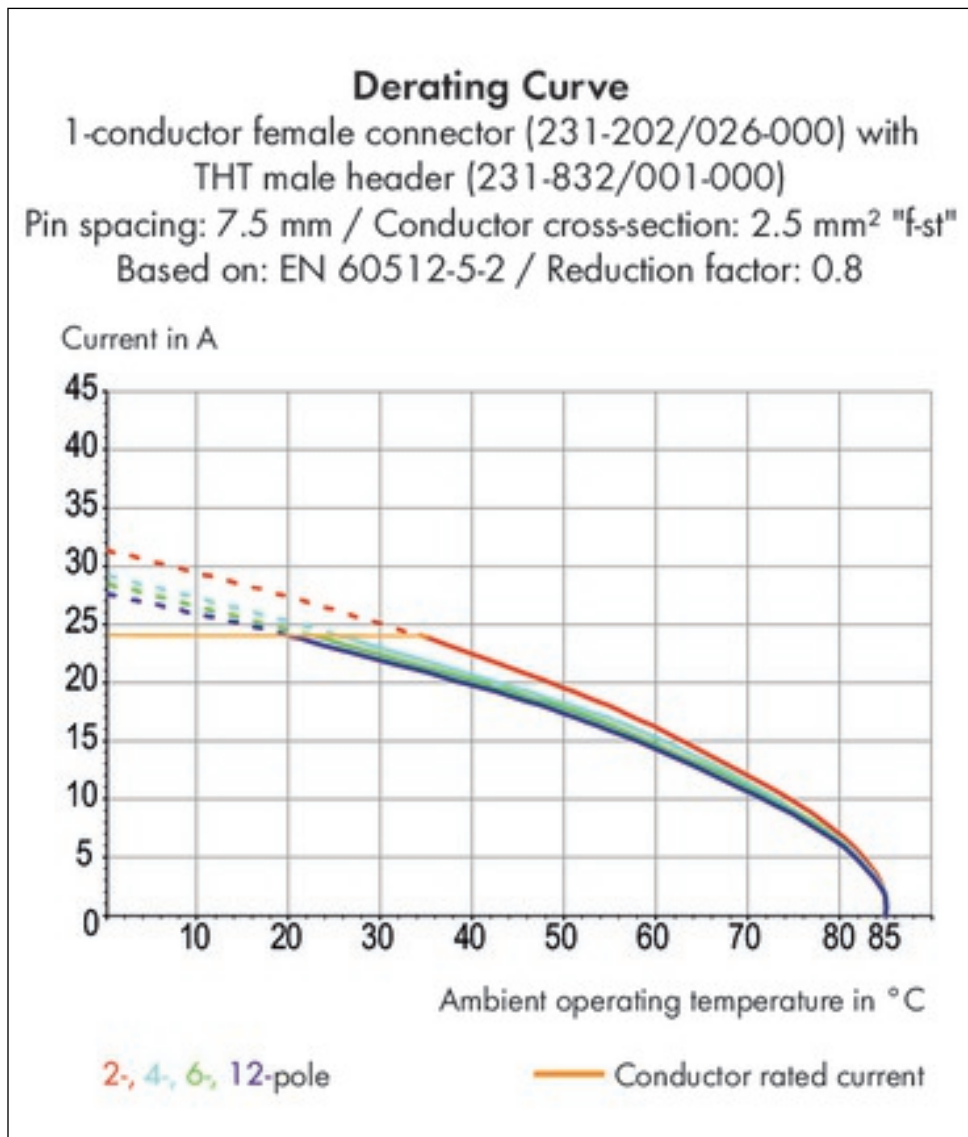
Printview: Female connector; 3-pole; Pin spacing 7.5 mm / 0.295 in; codable; only 1 locking latch; with coding finger; with latch - Item No.: 231-203/026-000

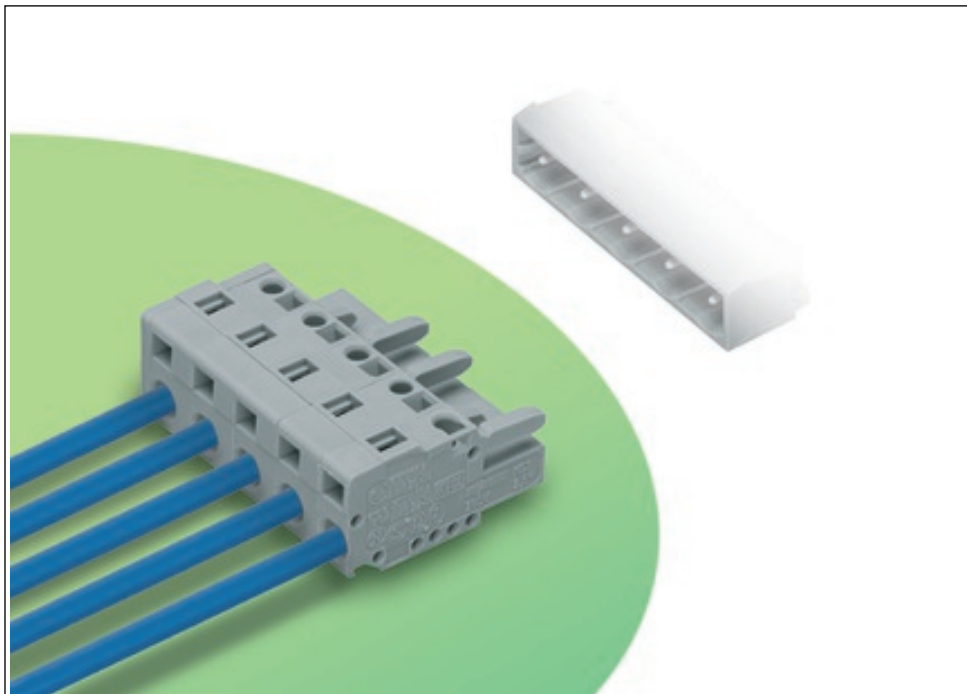
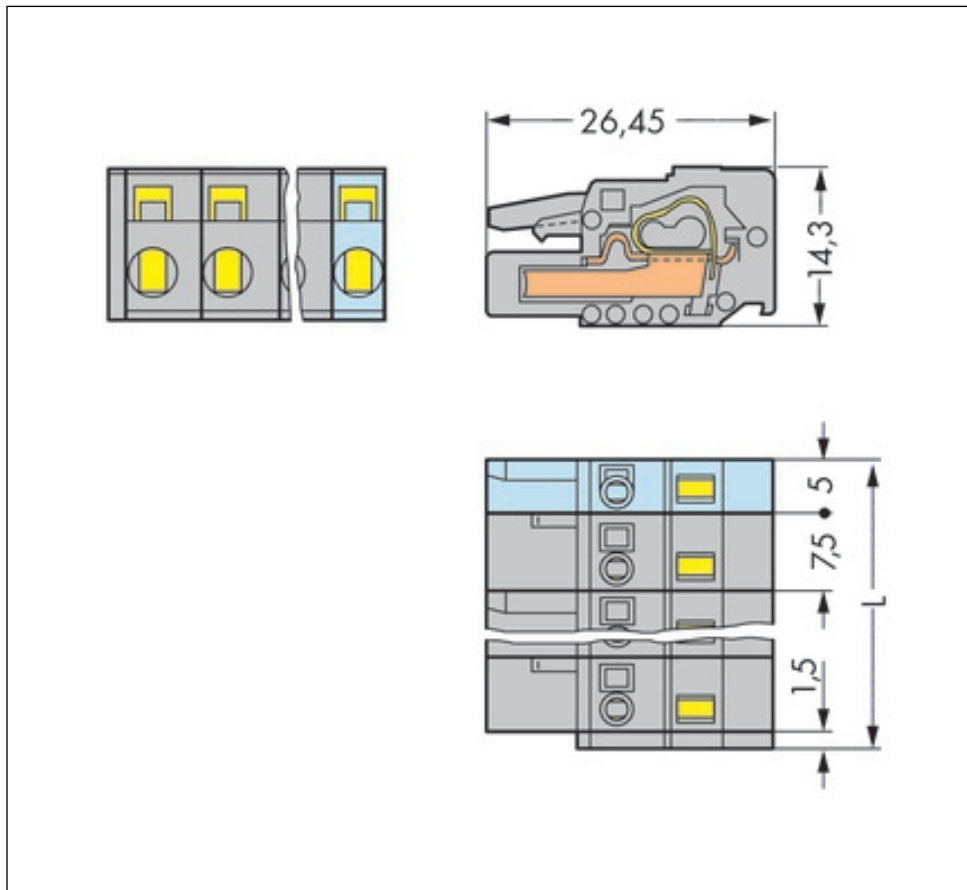
Technical data	
<i>Mismating protection</i>	<i>nein</i>
<i>Color</i>	<i>gray</i>
<i>Material group</i>	<i>I</i>
<i>Insulating material</i>	<i>Polyamide 66 (PA 66)</i>
<i>Flammability class per UL94</i>	<i>V0</i>
<i>Clamping spring material</i>	<i>Chrome nickel spring steel (CrNi)</i>
<i>Contact material</i>	<i>Copper alloy</i>
<i>Contact plating</i>	<i>tin-plated</i>
<i>Fire load [MJ]</i>	<i>0.1 [MJ]</i>
<i>Weight [g]</i>	<i>6.24 [g]</i>
<i>Limit temperature range</i>	<i>-60 ... 85 °C</i>

Printview: Female connector; 3-pole; Pin spacing 7.5 mm / 0.295 in; codable; only 1 locking latch; with coding finger; with latch - Item No.: 231-203/026-000

Images & drawings







Printview: Female connector; 3-pole; Pin spacing 7.5 mm / 0.295 in; codable; only 1 locking latch; with coding finger; with latch - Item No.: 231-203/026-000

Address

WAGO Kontakttechnik GmbH & Co. KG

Hansastr. 27

32423 Minden

Telefon: 0571/887-0

Fax: 0571/887-169

<http://www.wago.com>

© WAGO Kontakttechnik GmbH & Co. KG

Technische Änderungen und Irrtümer vorbehalten.

X-ON Electronics

Largest Supplier of Electrical and Electronic Components

Click to view similar products for [Wago manufacturer](#):

Other Similar products are found below :

[734-190](#) [750-460](#) [209-574](#) [231-118/026-000](#) [231-620/019-000](#) [250-209](#) [2734-108/037-000](#) [280-438](#) [285-135](#) [231-446/001-000_NR](#) [232-216/026-000](#) [264-726](#) [2010-1207](#) [2001-1207](#) [830-800/000-305](#) [811-421](#) [2006-1661](#) [750-960](#) [210-197](#) [248-504](#) [731-138/048-000](#) [750-604](#) [773-108](#) [793-5666](#) [811-317](#) [811-411](#) [857-415](#) [255-406](#) [280-675](#) [285-407](#) [0745-0302](#) [2060-473/998-404](#) [830-1000/000-000](#) [2000-5372](#) [769-412](#) [221-525](#) [852-1417](#) [2636-3105/020-000](#) [2009-110](#) [231-332/108-000](#) [281-512/281-501](#) [750-421](#) [750-842](#) [769-615](#) [753-437](#) [2009-145](#) [750-463](#) [852-1305/000-001](#) [852-1322](#) [852-1328](#)