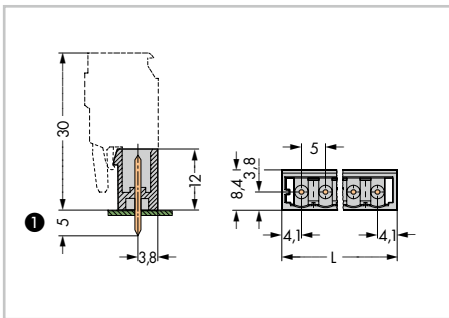
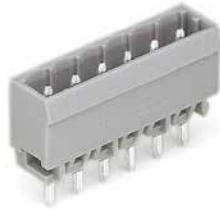
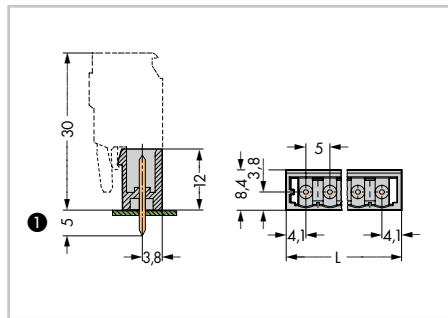


Male Headers with Solder Pins MCS MIDI Classic

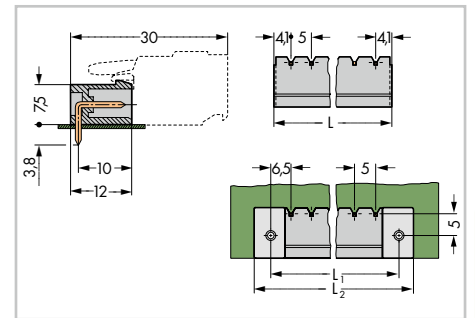
With 1 x 1 mm straight solder pins Pin spacing: 5 mm / 0.197 in.		With 1.2 x 1.2 mm straight solder pins Pin spacing: 5 mm / 0.197 in.		With 1 x 1 mm angled solder pins Pin spacing: 5 mm / 0.197 in.	
320 V/4 kV/2 12 A	300 V/10 A	320 V/4 kV/2 16 A	300 V/15 A	320 V/4 kV/2 12 A	300 V/10 A



L = (pole no. - 1) x pin spacing + 8.2 mm



L = (pole no. - 1) x pin spacing + 8.2 mm



L = (pole no. - 1) x pin spacing + 8.2 mm
 L₁ = L + 5 mm
 L₂ = L₁ + 7.4 mm

Pole No.	Item No.	Pack. Unit	Pole No.	Item No.	Pack. Unit	Pole No.	Item No.	Pack. Unit
Male header with 1 x 1 mm straight solder pins, gray			Male header with 1.2 x 1.2 mm straight solder pins, gray			Male header with 1 x 1 mm angled solder pins, gray		
2	231-132/001-000	200	2	231-162/001-000	200	2	231-432/001-000	200
3	231-133/001-000	200	3	231-163/001-000	200	3	231-433/001-000	200
4	231-134/001-000	200	4	231-164/001-000	200	4	231-434/001-000	200
5	231-135/001-000	200	5	231-165/001-000	200	5	231-435/001-000	200
6	231-136/001-000	100	6	231-166/001-000	100	6	231-436/001-000	100
7	231-137/001-000	100	7	231-167/001-000	100	7	231-437/001-000	100
8	231-138/001-000	100	8	231-168/001-000	100	8	231-438/001-000	100
9	231-139/001-000	100	9	231-169/001-000	100	9	231-439/001-000	100
10	231-140/001-000	100	10	231-170/001-000	100	10	231-440/001-000	100
11	231-141/001-000	100	11	231-171/001-000	100	11	231-441/001-000	100
12	231-142/001-000	100	12	231-172/001-000	100	12	231-442/001-000	100
13	231-143/001-000	50	13	231-173/001-000	50	13	231-443/001-000	50
14	231-144/001-000	50	14	231-174/001-000	50	14	231-444/001-000	50
15	231-145/001-000	50	15	231-175/001-000	50	15	231-445/001-000	50
16	231-146/001-000	50	16	231-176/001-000	50	16	231-446/001-000	50
17	231-147/001-000	50	17	231-177/001-000	50	17	231-447/001-000	50
18	231-148/001-000	50	18	231-178/001-000	50	18	231-448/001-000	50
19	231-149/001-000	50	19	231-179/001-000	50	19	231-449/001-000	50
20	231-150/001-000	50	20	231-180/001-000	50	20	231-450/001-000	50
21	231-151/001-000	50	21	231-181/001-000	50	21	231-451/001-000	50
22	231-152/001-000	50	22	231-182/001-000	50	22	231-452/001-000	50
23	231-153/001-000	50	23	231-183/001-000	50	23	231-453/001-000	50
24	231-154/001-000	50	24	231-184/001-000	50	24	231-454/001-000	50

① MCS MIDI male headers with straight solder pins are also available with 3.8 mm pin projection upon request. Replace item no. suffix: .../001-000 with .../046-000.

X-ON Electronics

Largest Supplier of Electrical and Electronic Components

Click to view similar products for [wago manufacturer](#):

Other Similar products are found below :

[750-460](#) [231-118/026-000](#) [231-303/026-000](#) [231-620/019-000](#) [257-403](#) [280-438](#) [280-831](#) [284-624](#) [210-111](#) [231-303/037-000](#) [231-446/001-000_NR](#) [232-216/026-000](#) [234-510](#) [264-726](#) [280-339](#) [0283-0671](#) [830-800/000-305](#) [750-512](#) [750-455](#) [51251782](#) [286-312](#) [713-1428/107-000](#) [731-138/048-000](#) [750-459](#) [750-517](#) [793-3505](#) [826-172](#) [859-304](#) [280-335](#) [231-535/001-000](#) [2604-1106](#) [2604-1504](#) [2606-1103/020-000](#) [2624-1103](#) [2626-3103/020-000](#) [821-104](#) [713-1107](#) [852-1411](#) [2106-1307](#) [2116-5307](#) [832-1205](#) [832-3604](#) [2009-110](#) [281-512/281-501](#) [286-336](#) [750-421](#) [750-838](#) [753-559](#) [750-1505](#) [787-732](#)