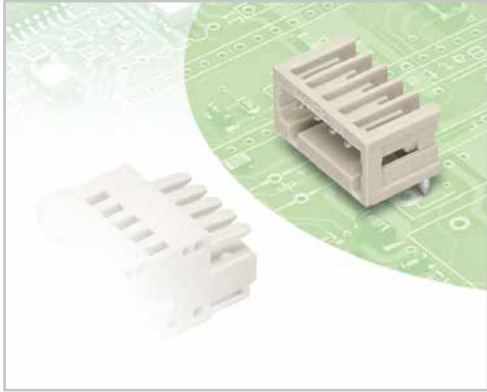


# Male Headers with Solder and Press-In Pins, MCS-MIDI

## Pin Spacing: 2.5 mm

### MCS MICRO



- Horizontal or vertical PCB mounting via straight and angled solder pins
- Also available with press-in pins for solder-free connection to the PCB
- 100% protected against mismatching; only mating halves with the same pole number can be connected together
- Coding pins available

**Technical data:**

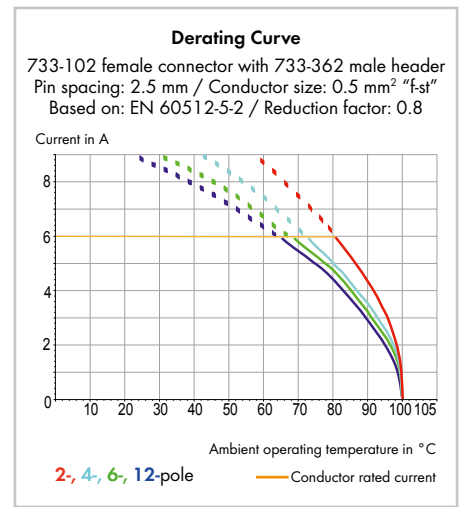
Pin Spacing	2.5 mm / 0.098 in.			Press-In Technology 2.5 mm / 0.098 in.		
	IEC/EN 60664-1			IEC/EN 60664-1		
Ratings per	III	III	II	III	III	II
Overtoltage category	3	2	2	3	2	2
Pollution degree	3	2	2	3	2	2
Rated voltage	80 V	160 V	320 V	80 V	160 V	320 V
Rated surge voltage	2.5 kV	2.5 kV	2.5 kV	2.5 kV	2.5 kV	2.5 kV
Nominal current	6 A	6 A	6 A	4 A	4 A	4 A
Approvals per	UL/CSA			UL/CSA		
Use group UL 1059	B	C	D	B	C	D
Rated voltage	150 V	-	-	150 V	-	-
Nominal current UL	4 A	-	-	4 A	-	-
Nominal current CSA	4 A	-	-	4 A	-	-

**Solder and press-in pin data:**

Solder pin: length/width	4.6 mm / 0.8 x 0.8 mm (straight)
Solder pin: length/width	3.7 mm / 0.8 x 0.8 mm (angled)
Solder pin: drilled hole diameter	1.1 <sup>+0.1</sup> mm
Press-in pin: length/width	3.2 mm / 0.6 x 1.2 mm
Press-in pin: drilled hole diameter	1.15 <sup>+0.025</sup> mm
Press-in pin: metal-plated hole	1.0 <sup>+0.09</sup> / <sub>-0.08</sub> mm (HAL Sn)
Press-in pin: metal-plated hole	1.0 <sup>+0.09</sup> / <sub>-0.08</sub> mm (Chem. Sn)

**Material data:**

Material group	I
Insulating material	Polyamide 66 (PA 66)
Flammability class per UL 94	V0
Lower/Upper limit temperature	-60 °C / +100 °C / Press-in pin: -40 °C / +85 °C
Contact material	Electrolytic copper (E <sub>C</sub> ) / Copper alloy for press-in technology
Contact plating	tin-plated
MCS connectors are also available upon request with gold-plated or partially gold-plated contact surfaces.	
Depending on the version requested, "item no. suffix ... /010-000" is added to the "basic item no."	



**MCS MICRO accessory**

**Page:**

Coding keys	235

The MULTI CONNECTION SYSTEM (MCS) is designed without breaking capacity for compliance with DIN EN 61984. When used as intended, these connectors shall not be connected/disconnected when live or under load. The circuit design should ensure header pins, which can be touched, are not live when unmated.

## X-ON Electronics

Largest Supplier of Electrical and Electronic Components

*Click to view similar products for [Headers & Wire Housings](#) category:*

*Click to view products by [Wago](#) manufacturer:*

Other Similar products are found below :

[57102-F02-18ULF](#) [58102-G61-06LF](#) [582553-1](#) [009176003701906](#) [0050291907](#) [02.125.8002.8](#) [609-3404](#) [61062-3](#) [622-0430](#) [622-3653LF](#)  
[63453-116](#) [636-1030](#) [636-1427](#) [636-3427](#) [636-4007](#) [641938-9](#) [65495-038](#) [65692-001LF](#) [65781-018](#) [65781-047](#) [65817-010LF](#) [65817-015LF](#)  
[66207-023LF](#) [67095-007LF](#) [68631-112](#) [68645-018](#) [68648-049](#) [699319-000](#) [M90C108951C](#) [70.362.1628.0](#) [70-4210](#) [70-4226B](#) [70-4853B](#)  
[707-5020](#) [707-5028](#) [71.350.2428.0](#) [71961-016LF](#) [733-134](#) [754199-000](#) [760-3052](#) [787-8014-00](#) [80.063.4001.1](#) [800-90-001-10-001000](#)  
[801-43-002-10-013000](#) [801-43-006-10-002000](#) [803-41-018-10-001000](#) [803-43-014-20-001000](#) [803-43-024-10-001000](#) [803-93-012-10-001000](#)  
[8-1437020-4](#)