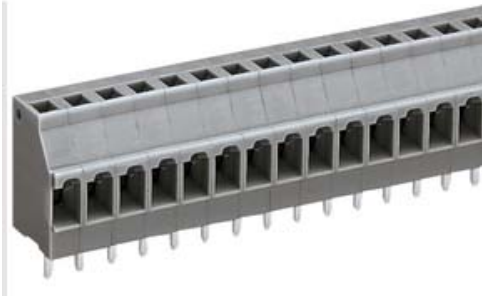


---

Item no.: 740-112  
Product description: PCB TERMINAL STRIP; 1 SOLDER PIN / POLE; 12 POLE;  
PIN SPACING 5 MM / 0.197 IN; SIDE-ENTRY; CAGE  
CLAMP®CONNECTION

---



Packing unit 60 4\*15 pieces

Pin spacing from	5 mm
Pin spacing from	0,197 in
pole count	12
Cross section from [mm <sup>2</sup> ]	0,08 mm <sup>2</sup>
Cross section to [mm <sup>2</sup> ]	2,5 mm <sup>2</sup>
Cross section from [AWG]	28 AWG
Cross section to [AWG]	12 AWG
Connection method	CAGE CLAMP®CONNECTION
Measured voltage EN	250 V
Measured shock voltage	4 kV
Pollution degree	3
Current intensity EN	16 A
Voltage CSA	300 V
Current CSA	16 A
Voltage UL	300 V
Current UL	10 A
Weight	16,479 g
Color	grey
Wiring type	Side-entry
No. of connection Points	12
No. of potentials	12
Height	18,2 mm



Width	60 mm
Width	2,362 in
Depth	11,1 mm
Depth	0,437 in
Strip length from	6 mm
Strip length to	7 mm
Strip length	0,24 in



Item number	Admission office	Approval no.	Voltage [V]	Current [A]	Cross section [ mm <sup>2</sup> ]
740-112	ABS	04-HG469925-PDA	250	16	0,5-2,5
740-112	BBJ	B/12/697/03	250	16	0,5-2,5
740-112	BV	11915/A0	250	16	0,5-2,5
740-112	CCA	DK2097	250	16	0,5-2,5
740-112	CSA	154112-1711139	300	16	28-12
740-112	DEMKO	99-04159	250	16	0,5-2,5
740-112	DNV	E7569	250	16	0,5-2,5
740-112	GL	17296-00HH	250	16	0,5-2,5
740-112	RMR	11130002	250	16	0,5-2,5
740-112	UL	E45172	300	10	28-12

Sorting criteria: admission office - approval number

© WAGO Kontakttechnik GmbH & Co. KG

Specifications are subject to changes and errors may be expected

## X-ON Electronics

Largest Supplier of Electrical and Electronic Components

*Click to view similar products for [wago manufacturer](#):*

Other Similar products are found below :

[750-460](#) [231-118/026-000](#) [231-303/026-000](#) [231-620/019-000](#) [257-403](#) [280-438](#) [280-831](#) [284-624](#) [210-111](#) [231-303/037-000](#) [231-446/001-000\\_NR](#) [232-216/026-000](#) [234-510](#) [264-726](#) [280-339](#) [0283-0671](#) [830-800/000-305](#) [750-512](#) [750-455](#) [51251782](#) [286-312](#) [713-1428/107-000](#) [731-138/048-000](#) [750-459](#) [750-517](#) [793-3505](#) [826-172](#) [859-304](#) [280-335](#) [231-535/001-000](#) [2604-1106](#) [2604-1504](#) [2606-1103/020-000](#) [2624-1103](#) [2626-3103/020-000](#) [713-1107](#) [852-1411](#) [2106-1307](#) [2116-5307](#) [832-1205](#) [832-3604](#) [2009-110](#) [281-512/281-501](#) [286-336](#) [750-421](#) [750-838](#) [753-559](#) [750-1505](#) [787-732](#) [753-437](#)