

日期/Date

档案员
Filing Clerk

1

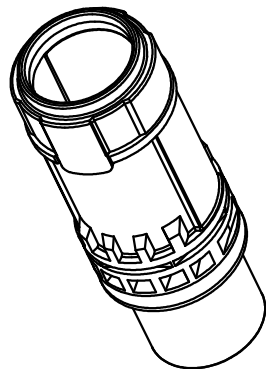
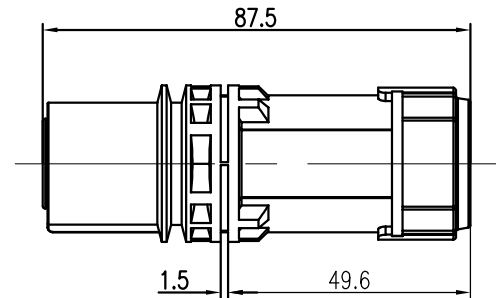
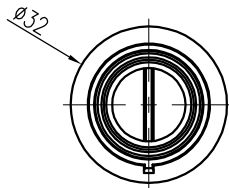
2

3

4

5

6



技术参数:

插芯:

- 插针数: 1
- 额定电流:
 - 不带适配器: 350A
 - 带适配器: 350A
- 额定电压:
 - 不带适配器: 2000V
 - 带适配器: 4000V
- 额定脉冲电压:
 - 不带适配器: 12kV
 - 带适配器: 18kV
- 污染等级: 3
- 绝缘阻抗: $>10^{10}\Omega$
- 材料: 聚酰胺
- 颜色: RAL 9002 (灰白色)
- 温度范围: $-40^{\circ}\text{C} - +125^{\circ}\text{C}$
- 依据UL 94的阻燃等级: V0
- 可插拔次数: >500

插针:

- 接线方式: 冷压连接
- 材料: 铜合金
- 表面处理: 镀银
- 接触电阻: $<0.3\text{m}\Omega$
- 线径范围: 35-120mm²
- 最大电缆直径: 22mm
- 冷压模具: 按照 DIN 46 235
- 压力要求: 130kN

固定框架:

- 材料: 不锈钢
- 外壳固定螺丝的拧紧力矩: $0.5\text{N}\cdot\text{m}$
- 框架固定螺丝的拧紧力矩: $1.5\text{N}\cdot\text{m}$

- 工具:

- 液压钳: TL05
- 六角适配器, 适用于350的外壳:
WNSC-M25M25/APT
WNSC-M32M32/APT

Technical specification:

Insters:

- No. of contact: 1
- Rated current:
 - Without adapter: 350A
 - With adapter: 350A
- Rated voltage:
 - Without adapter: 2000V
 - With adapter: 4000V
- Rated impulse voltage:
 - Without adapter: 12kV
 - With adapter: 18kV
- Pollution degree: 3
- Insulation resistance: $>10^{10}\Omega$
- Material: polyamide
- Colour: RAL 9002(light white)
- Temperature range: $-40^{\circ}\text{C} - +125^{\circ}\text{C}$
- Flammability acc.to UL 94: V0
- Mating cycles: >500

Contacts:


- Terminal: crimp terminal
- Material: copper alloy
- Surface: hard-silver plated
- Contact resistance: $<0.3\text{m}\Omega$
- Wire gauge: 35-120mm²
- Max. cable diameter: 22mm
- Crimp dies: acc. to DIN 46 235
- Pressing force requirement: 130kN

Frame:

- Material: stainless steel
- Tightening torque of the fixing screws: $0.5\text{N}\cdot\text{m}$
- Tightening torque of the cross-tying: $1.5\text{N}\cdot\text{m}$

- Tools:

- Manual hydraulic clamp: TL05
- Hexagonal adapter, for 350 Hoods/Housings:
WNSC-M25M25/APT
WNSC-M32M32/APT

						表面处理 Finish		-		图号 Drawing No.		-		
						材料 Material		-		产品代号 Part Code		HC350-FC		
标记 Mark	处数 Number	变更描述/Description			签名 Signature	日期 Date					产品料号 Part No.		1310010200101	
	姓名/Name	日期/Date		姓名/Name	日期/Date	比例 Scale	版本 REV.	重量 Weight	数量 Qty.	产品名称 Part Name		-		
绘图 Drawn	ZL CHEN	03.04.2020	标准化 Stand.	-	-	2:3	V1.3	36.2g	-					
审核 Checked	HZ LAN	03.04.2020												
工艺 Process	-	-	批准 Approved	HQ ZHANG	03.04.2020					All Dimensions in mm Original Size DIN A 4		 厦门唯恩电气有限公司 XIAMEN WAIN ELECTRICAL CO.LTD		

1

2

3

4

5

6

X-ON Electronics

Largest Supplier of Electrical and Electronic Components

Click to view similar products for [DC Power Connectors](#) category:

Click to view products by [WAIN](#) manufacturer:

Other Similar products are found below :

[KLDX-SMT-0202-BPTR](#) [171-0722-E](#) [K596](#) [KLD-0201-BC](#) [4C6831AX](#) [10073976-112LF](#) [LCB60PW-M](#) [LCB30PW-M](#) [LCB60PB-M](#)
[LCC30PB-M](#) [LCB50PW-M](#) [LCB50-M](#) [LCB60-F](#) [LCC30-M](#) [LCB40PW-M](#) [LCC30PW-M](#) [LCB50-F](#) [LCB40-F](#) [LCB30-F](#) [LCC40-M](#)
[LCC40PB-M](#) [LCB40PB-M](#) [LCC40-F](#) [LCB60-M](#) [LCC40PW-M](#) [LCB50PB-M](#) [DC-002-100](#) [DC-031A-130](#) [DC-031A-100](#) [DC-003A-130](#)
[DC-045-130](#) [DC-192-130](#) [DC-033-130](#) [DC-011-100](#) [DC-002F-130](#) [DC-002-130](#) [DB-14-2F](#) [DC-183B](#) [DC-060-04A](#) [DC-099-200](#) [DC-015-](#)
[250-A](#) [DC-016-200-A](#) [DC-005A-200](#) [DC-044A-200](#) [DC-088-200](#) [DC-022A-200](#) [DC-038-150](#) [DC-012A-250](#) [DC-005C-130](#) [DC-012A-200](#)