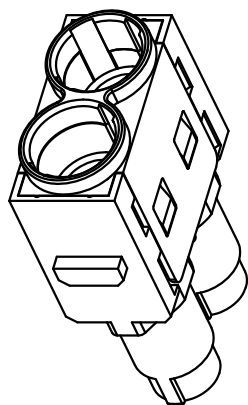
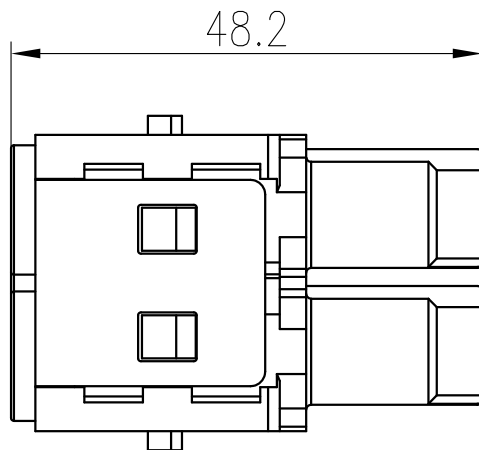
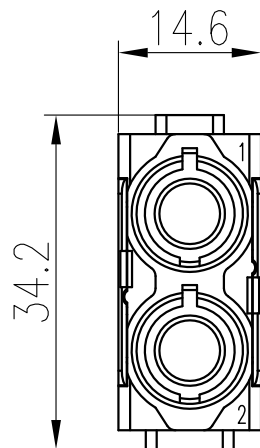


日期/Date  
档案员  
Filing Clerk



技术参数:

- 插芯:
- 插针数: 2
  - 额定电流: 70A
  - 额定电压: 1000V
  - 额定脉冲电压: 8kV
  - 污染等级: 3
  - 绝缘阻抗:  $\geq 10^{10}\Omega$
  - 材料: 聚碳酸酯
  - 颜色: RAL 7032 (浅灰色)
  - 温度范围:  $-40^{\circ}\text{C} - +125^{\circ}\text{C}$
  - 依据UL 94的阻燃等级: V0
  - 可插拔次数:  $>500$
- 插针:
- 接线方式: 冷压连接
  - 材料: 铜合金
  - 表面处理: 镀银
  - 接触电阻:  $<0.5\text{m}\Omega$
  - 线径范围:  $10-25\text{mm}^2$
  - 最大电缆直径: 11mm
  - 剥线长度: 15.5mm
  - 工具: 冷压钳-TL05

Technical specification:

- Insters:
- No. of contact: 2
  - Rated current: 70A
  - Rated voltage: 1000V
  - Rated impulse voltage: 8kV
  - Pollution degree: 3
  - Insulation resistance:  $>10^{10}\Omega$
  - Material: polycarbonate
  - Colour: RAL 7032(light grey)
  - Temperature range:  $-40^{\circ}\text{C} - +125^{\circ}\text{C}$
  - Flammability acc.to UL 94: V0
  - Mating cycles:  $>500$
- Contacts:
- Terminal: crimp terminal
  - Material: copper alloy
  - Surface: hard-silver plated
  - Contact resistance:  $<0.5\text{m}\Omega$
  - Wire gauge:  $10-25\text{mm}^2$
  - Max. insulation diameter: 11mm
  - Stripping length: 15.5mm
  - Tools: Crimp contact tool-TL05

|               |              |                  |                |         |                 |                |            |   |            |   |                   |                  |
|---------------|--------------|------------------|----------------|---------|-----------------|----------------|------------|---|------------|---|-------------------|------------------|
|               |              |                  |                |         |                 | 表面处理<br>Finish | -          |   |            |   | 图号<br>Drawing No. | -                |
|               |              |                  |                |         |                 | 材料<br>Material | -          |   |            |   | 产品代号<br>Part Code | HMK70-002-FC     |
| 标记<br>Mark    | 处数<br>Number | 变更描述/Description |                |         | 签名<br>Signature |                | 日期<br>Date |   |            |   |                   | 产品料号<br>Part No. |
|               | 姓名/Name      | 日期/Date          |                | 姓名/Name | 日期/Date         | 比例<br>Scale    | 版本<br>REV. | 重量<br>Weight                                  | 数量<br>Qty. | 产品名称<br>Part Name                           |                   |                  |
| 绘图<br>Drawn   | BQ LUO       | 18.10.2010       | 标准化<br>Stand.  | -       | -               | 3:4            | V1.0       | 9g  | -          | -   |                   |                  |
| 审核<br>Checked | P RAO        | 18.10.2010       |                |         |                 |                |            |   |            | -   |                   |                  |
| 工艺<br>Process | -            | -                | 批准<br>Approved | YY LIN  | 18.10.2010      |                |            | All Dimensions in mm<br>Original Size DIN A 4 |            | 厦门唯恩电气有限公司<br>XIAMEN WAIN ELECTRICAL CO.LTD |                   |                  |

## X-ON Electronics

Largest Supplier of Electrical and Electronic Components

*Click to view similar products for [DC Power Connectors](#) category:*

*Click to view products by [WAIN](#) manufacturer:*

Other Similar products are found below :

[KLDX-SMT-0202-BPTR](#) [171-0722-E](#) [K596](#) [KLD-0201-BC](#) [4C6831AX](#) [10073976-112LF](#) [LCB60PW-M](#) [LCB30PW-M](#) [LCB60PB-M](#)  
[LCC30PB-M](#) [LCB50PW-M](#) [LCB50-M](#) [LCB60-F](#) [LCC30-M](#) [LCB40PW-M](#) [LCC30PW-M](#) [LCB50-F](#) [LCB40-F](#) [LCB30-F](#) [LCC40-M](#)  
[LCC40PB-M](#) [LCB40PB-M](#) [LCC40-F](#) [LCB60-M](#) [LCC40PW-M](#) [LCB50PB-M](#) [DC-002-100](#) [DC-031A-130](#) [DC-031A-100](#) [DC-003A-130](#)  
[DC-045-130](#) [DC-192-130](#) [DC-033-130](#) [DC-011-100](#) [DC-002F-130](#) [DC-002-130](#) [DB-14-2F](#) [DC-183B](#) [DC-060-04A](#) [DC-099-200](#) [DC-015-](#)  
[250-A](#) [DC-016-200-A](#) [DC-005A-200](#) [DC-044A-200](#) [DC-088-200](#) [DC-022A-200](#) [DC-038-150](#) [DC-012A-250](#) [DC-005C-130](#) [DC-012A-200](#)