



fitted with

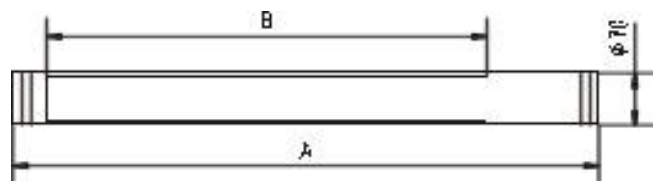
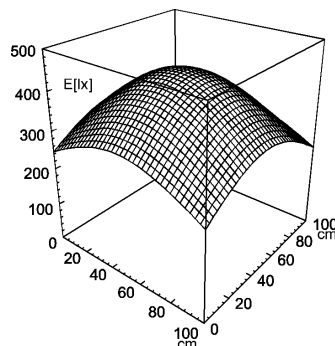
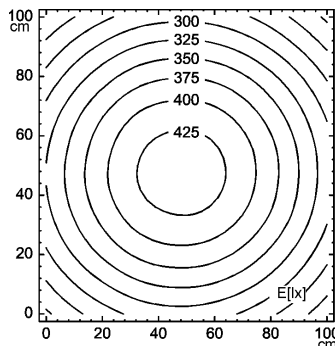
- work equipment**
- connected load**
- light distribution**
- glare-free**
- system of protection**
- class of protection**
- luminaire body**
- material**
- weight (net)**
- mains lead**
- fastening**
- total length**
- light output**
- outside diameter**
- side part**

- 1 x compact fluorescent lamp TC-LEL 36W/840 2G11
- light colour neutral white, 4000 K, Color Rendering Index (CRI)=80
- Energy efficiency category A
- electronic ballast
- 24 V; 50/60 Hz
- direct
- without
- IP 67
- I
- acrylic (PMMA), clear
- approx. 1.8 kg
- connecting terminal
- lamp bracket (accessory)
- 747 mm
- 364 mm
- 70 mm
- C with screwed cable gland

illuminance

measuring conditions: d=100cm

E_{min}: 220 lx
 E_m: 337 lx
 E_{max}: 437 lx



X-ON Electronics

Largest Supplier of Electrical and Electronic Components

Click to view similar products for [Waldmann](#) manufacturer:

Other Similar products are found below :

[112577000-00539774](#) [112887037-00076065](#) [113021000-00564565](#) [113163000-00662717](#) [113458000-00668976](#) [113472000-00691461](#)
[190007019-00014904](#) [226108019-00610754](#) [408001403-00671626](#)