



light source

- work equipment**
- connected load**
- Power consumption**
- luminous flux**
- luminous efficacy**
- light distribution**
- colour temperature**
- color rendering index (CRI)**
- System of protection**
- class of protection**
- technology**
- operation**
- luminaire body**
- lamp cover**
- weight (net)**
- mains supply**

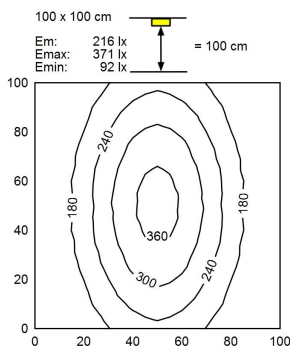
- design**
- Fastening**
- dimension**
- special features**

- LED
- Energy efficiency category A/A+/A++
- without
- 20-28V; DC
- approx. 5 W
- approx. 490 lm
- approx. 98 lm/W
- direct, narrow-angled beam
- neutral white, approx. 5000 K
- > 80
- IP67
- III
- switchable
- external
- aluminium, anodised, aluminium coloured anodised
- screen, clear
- approx. 0.3 kg
- built-in plug
- RSFM 4/0;05 P25-1
- mounted version
- L-angle, clamp
- A=190 mm
- angle of illumination 40°

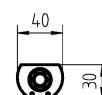
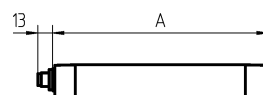
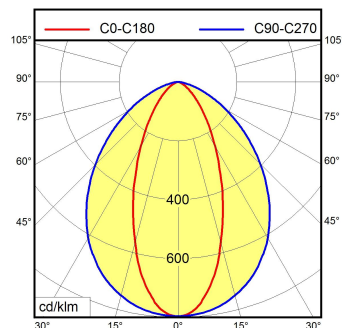


RSFM 4/0;05 P25-1

illuminance



luminous intensity



X-ON Electronics

Largest Supplier of Electrical and Electronic Components

Click to view similar products for [LED Lighting Fixtures](#) category:

Click to view products by [Waldmann](#) manufacturer:

Other Similar products are found below :

[XVEC21P](#) [XVEC2B7](#) [113163000-00662717](#) [113472000-00691461](#) [LD6A-3DQB-RYG](#) [LF1B-NA3P-2THWW2-3M](#) [LF1B-NC3P-2THWW2-3M](#) [LF1B-ND3P-2THWW2-3M](#) [E35600](#) [NB-RLAMP01-LED](#) [FLK7LED](#) [LD6A-3WQB-RYG](#) [XVC4B3K](#) [XVBC4M7](#) [2702482](#) [2702935](#) [ZWF-638-24CW](#) [ZAF-486-24CW](#) [BC5000-N-S](#) [BP3200-C-S-24](#) [BP3200-C-F-36](#) [BP3200-C-F-12](#) [BC5000-C-S](#) [2403122](#) [2403121](#) [2402991](#) [113261000-00641180](#) [113259000-00641174](#) [190007019-00014904](#) [226108019-00610754](#) [4823](#) [4824](#) [4866](#) [4868](#) [11212573001-00514271](#) [113021000-00564565](#) [113473000-00704968](#) [113471000-00704981](#) [NB-RLAMP01](#) [E35500](#) [408001403-00671626](#) [LD6A-3WZQB-RYG](#) [LF1B-NA4P-2THWW2-3M](#) [LF1B-NB3P-2THWW2-3M](#) [LF1D-C2F-2W-330](#) [LF1D-LH2F-2W-A](#) [LF1B-ND4P-2THWW2-3M](#) [LF1B-NF3P-2THWW2-3M](#) [SL7/4-FW](#) [BC5500-C-S-12](#)