



# CONTENTS

<b>1.0</b>	<b>GENERAL DESCRIPTIONS.....</b>	<b>3</b>
<b>2.0</b>	<b>ABSOLUTE MAXIMUM RATINGS.....</b>	<b>5</b>
<b>3.0</b>	<b>PIXEL FORMAT IMAGE.....</b>	<b>6</b>
<b>4.0</b>	<b>OPTICAL CHARACTERISTICS.....</b>	<b>7</b>
<b>5.0</b>	<b>BACKLIGHT CHARACTERISTICS(REFERENCE).....</b>	<b>10</b>
<b>6.0</b>	<b>ELECTRICAL CHARACTERISTICS.....</b>	<b>11</b>
<b>7.0</b>	<b>INTERFACE TIMINGS.....</b>	<b>17</b>
<b>8.0</b>	<b>POWER CONSUMPTION.....</b>	<b>18</b>
<b>9.0</b>	<b>POWER ON/OFF SEQUENCE.....</b>	<b>19</b>
<b>10.0</b>	<b>MECHANICAL CHARACTERISTICS.....</b>	<b>20</b>
<b>11.0</b>	<b>PACKAGE SPECIFICATION.....</b>	<b>21</b>
<b>12.0</b>	<b>GENERAL PRECAUTION.....</b>	<b>22</b>

## 1.0 General Descriptions

### 1.1 Introduction

The M156FHND0-R0 is a color active matrix LCD module incorporation Oxide TFT. It is composed of a TFT LCD panel, a backlight, a timing controller, voltage reference, common voltage, column driver, and row driver circuit. This TFT LCD has a 15.6-inch diagonally measured active display area with resolution 1,920 horizontal by 1,080 vertical pixel array.

### 1.2 Features

- 15.6" TN TFT LCD Panel
- Supported 1,920x1,080 Pixels Resolution
- Compatible With RoHS Standard
- Supported eDP 1.2 Electrical Interface

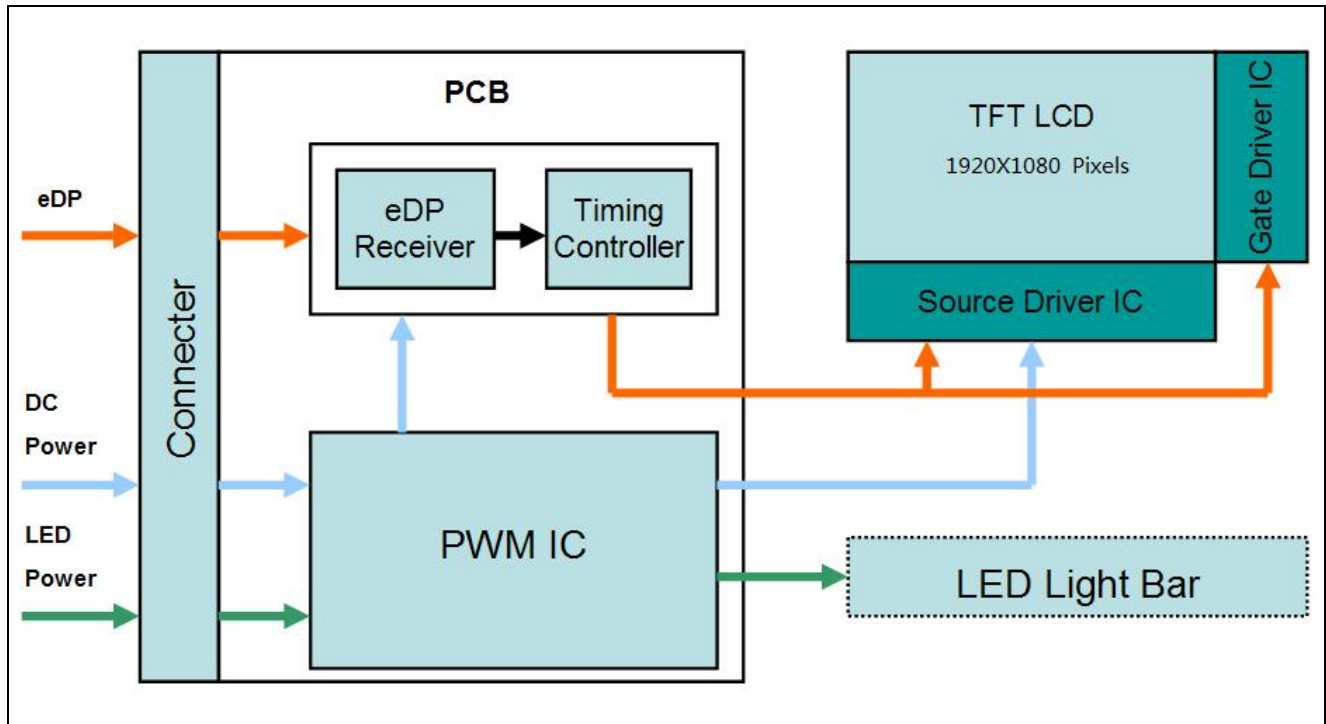
### 1.3 Product Summary

Items	Specifications	Unit
Screen Diagonal	15.6	Inch
Active Area	344.16 (H) x 193.59 (V)	mm
Pixels H x V	1,920 x 1,080	-
Pixel Pitch	0.179 (H) × 0.179 (V)	mm
Pixel Arrangement	R.G.B. Vertical Stripe	-
Display Mode	Normally Black	-
Contrast Ratio	1000	-
White Luminance	220 (Typ.)	cd/ m <sup>2</sup>
Response Time	25	msec
View Angle(L/R/U/D)	89/89/89/89	-
Input Voltage	+3.3 ( Logic ) / +12V ( Backlight )	V
Logic Power Consumption	TBD	Watt
Outline Dimension	359.5(H) x 223.75(V) x 3.1(D)	mm
Electrical Interface (Logic)	eDP 1.2	-
Support Color	16.7M	-
Optimum Viewing Direction	ALL	-
Surface Treatment	Anti-glare coating: (3H)	-

## 1.4 Functional Block Diagram

Figure 1 Shows the functional block diagram of the LCD panel.

**Figure 1 Block Diagram**



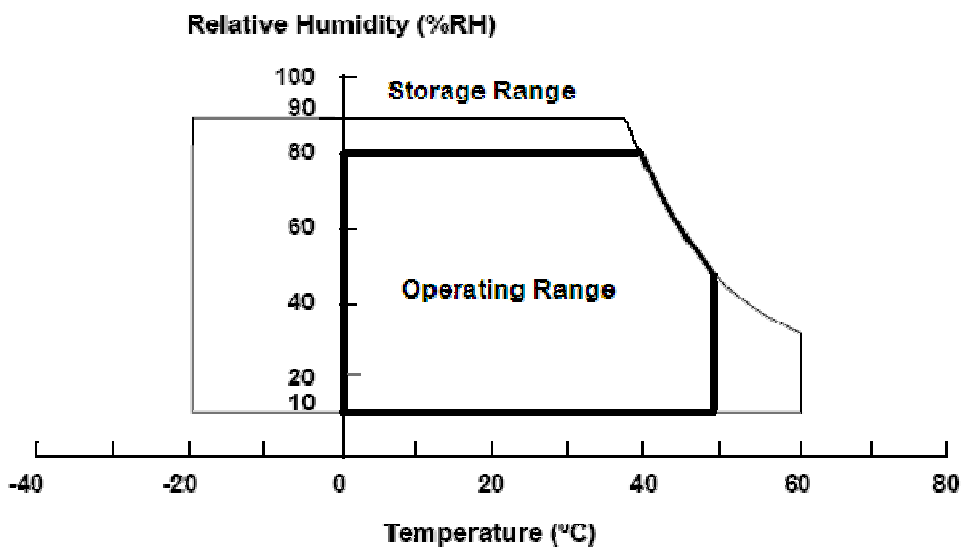
## 2.0 Absolute Maximum Ratings

**Table 1 Absolute Ratings of Environment**

Item	Symbol	Min.	Max.	Unit	Conditions
Supply Voltage	$V_{DD}$	-0.3	4.0	V	-
Input Signal	$V_S$	-0.3	2.4	V	eDP Signals
Operating Temperature	TOP	0	50	°C	Note
Operating Humidity	HOP	10	80	%RH	Note
Storage Temperature	TST	-20	60	°C	Note
Storage Humidity	HST	10	90	%RH	Note

Note : (A)Maximum Wet-Bulb temperature should be 39°C and no condensation of water.  
 (B)When you apply the LCD module for OA system. Please make sure to keep the temperature of LCD module under 60°C.  
 (C)Storage /Operating temperature & humidity:

**Figure 2 Absolute Ratings of Environment of the LCD Module**





## 4.0 Optical Characteristics

The optical characteristics are measured under stable conditions at 25°C (Room Temperature) :

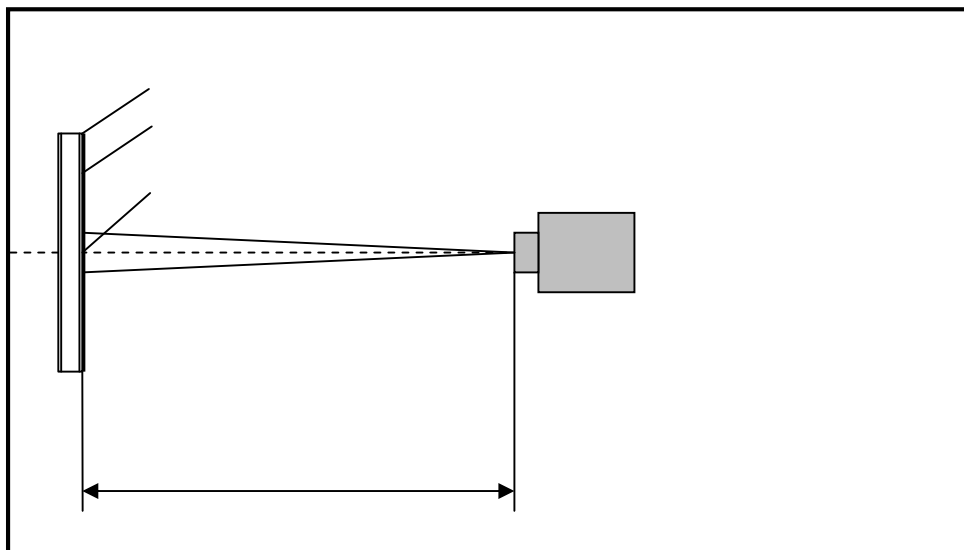
**Table 2 Optical Characteristics**

Item	Conditions		Specification			
			Min.	Typ.	Max.	Note
Viewing Angle [degrees]	Horizontal CR=10	Left ( $\theta_L$ )	80	89	-	A, B,C,F,G
		Right ( $\theta_R$ )	80	89	-	
	Vertical CR=10	Up ( $\psi_H$ )	80	89	-	
		Down( $\psi_L$ )	80	89	-	
Contrast Ratio	Center		700	1000	-	A, B,D,F,G
Response Time [ms]	Rising +Falling		-	25	-	A, B,E,F,G
Color /Chromaticity Coordinates (CIE1931)	Red	x	Typ-0.03	0.590	Typ+0.03	A,B,F,G
	Red	y		0.350		
	Green	x		0.330		
	Green	y		0.555		
	Blue	x		0.153		
	Blue	y		0.119		
	White	x		0.313		
	White	y		0.329		
White Luminance [cd/ m <sup>2</sup> ]	Y		200	220	-	A,B
Panel Transmittance [%]	-		-	6.5	-	F,G,H
NTSC Ratio[%]				45		A,B

### Note: A. Measurement Setup

The LCD module should be stabilized at 25°C for 15 minutes to avoid abrupt temperature change during measuring. In order to stabilize the luminance, the measurement should be executed after lighting backlight for 15 minutes in a windless room.

**Figure 4 Measurement Setup**



B. The LED input parameter setting as:

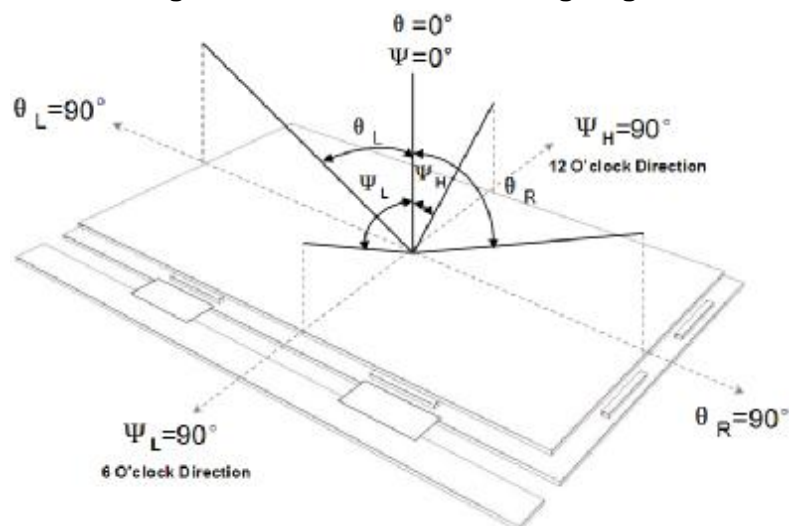
V\_LED: 12V ( $\pm 0.1V$ )

PWM\_LED: duty 100 %

C. Definition of Viewing Angle

Viewing angle is the measurement of contrast ratio  $\geq 10$ , at the screen center, over a  $180^\circ$  horizontal and a  $180^\circ$  vertical range (off-normal viewing angles). The  $180^\circ$  viewing angle range is broken down as follows;  $90^\circ$  ( $\theta$ ) horizontal left and right and  $90^\circ$  ( $\psi$ ) vertical, high (up) and low (down). The measurement direction is typically perpendicular to the display surface with the screen rotated about its center to develop the desired measurement viewing angle.

**Figure 5 Definition of Viewing Angle**





D. Definition Of Contrast Ratio (CR)

The contrast ratio can be calculated by the following expression

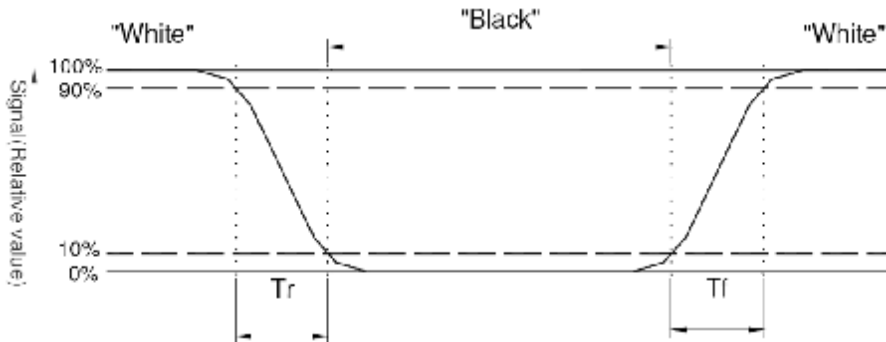
$$\text{Contrast Ratio (CR)} = L63 / L0$$

L63: Luminance of gray level 63, L0: Luminance of gray level 0

E. Definition Of Response Time ( $T_r, T_f$ )

The output signals of DMS 1140 or equivalent are measured when the input signals are changed from "Black" to "White" (falling time) and from "White" to "Black" (rising time), respectively. The response time interval between the 10% and 90% of amplitudes.

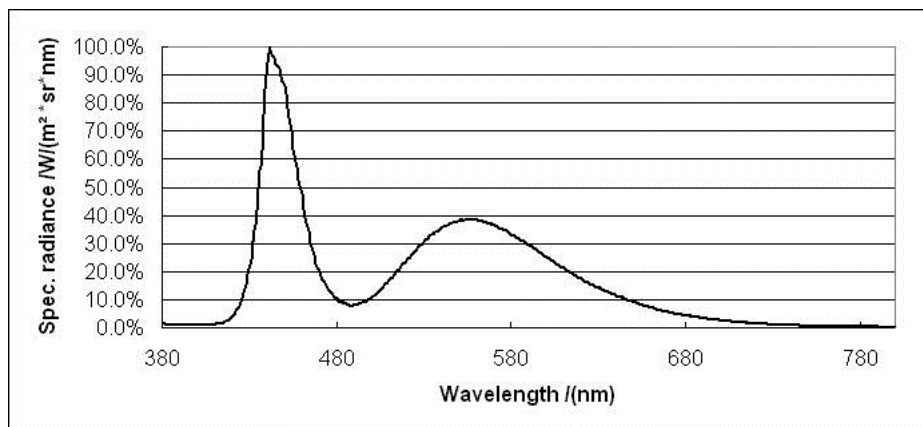
**Figure 6 Definition of Response Time**



F. Light source is the BLU which is supplied by SWT.

G. SWT Back light Spectrum (Reference)

**Figure 7 Back light Spectrum**



H. Definition of Center Transmittance( Open-cell is without signal input.)

## 5.0 Backlight Characteristics(Reference)

**Table 3 Backlight Characteristics**

Symbol	Parameter		Min.	Typ.	Max.	Units	Condition
VLED	LED input		7.0	12.0	21.0	[V]	Ta=25[deg C]
V <sub>F</sub>	LED Forward Voltage		2.9	3.3	3.4	[V]	Ta=25[deg C]
I <sub>F</sub>	LED Forward Current			20		[mA]	Note C
P <sub>B/L</sub>	B/L Power Consumption		-	-	4	[W]	Ta=25[deg C]
LT	LED Life Time		10000	-	-	Hours	Ta=25[deg C]
VPWM_EN	PWM Signal	High	2.0	3.3	3.6	V	-
		Low	0	-	0.5	V	
FPWM	Output PWM frequency		-	200	1K	Hz	-
VLED_EN	LED enable	High	2.0	3.3	3.6		-
		Low	0	-	0.5	V	
PWM	PWM Duty ratio		1	-	100	%	-

Note A: Calculator value for LED chip specification.

Note B: The LED life time define as the estimated time to 50% degradation of initial luminous.

Note C: I<sub>LED</sub>=20 mA (Per LED)

## 6.0 Electrical Characteristics

### 6.1 Interface Connector

**Table 4 Signal Connector Name / Designation**

<b>Manufacturer</b>	Starconn
<b>Type / Part Number</b>	300E30-0010RA-G3
<b>Mating Receptacle/Part Number</b>	111B30-1210TA-G3

**Table 5 Signal Connector Pin Assignment**

Pin	Signal Name	Description	Remarks
1	NC	Not Connect	-
2	GND	Ground	-
3	Lane 1 (N)	Complement Signal Link Lane 1	-
4	Lane 1 (P)	True Signal Line 1	-
5	GND	Ground	-
6	Lane 0 (N)	Complement Signal Link Lane 0	-
7	Lane 0 (P)	True Signal Line 0	-
8	GND	Ground	-
9	AUX_CH(P)	True Signal Auxiliary Ch.	-
10	AUX_CH(N)	Complement Signal Auxiliary Ch.	-
11	GND	Ground	-
12	LCD_VCC	LCD Logic and Driver Power	+3.3V
13	LCD_VCC	LCD Logic and Driver Power	+3.3V
14	NC	Not Connect	-
15	GND	Ground	-
16	GND	Ground	-
17	HPD	HPD Signal Pin	-
18	GND	Ground	-
19	GND	Ground	-
20	GND	Ground	-
21	GND	Ground	-
22	BL_ENABLE	Backlight On/Off	-
23	BL_PWM_DIM	System PWM Signal Input for Dimming	-
24	NC	Not Connect	-

25	NC	Not Connect	-
26	BL_PWR	Backlight Power	+12V
27	BL_PWR	Backlight Power	+12V
28	BL_PWR	Backlight Power	+12V
29	BL_PWR	Backlight Power	+12V
30	NC	Not Connect	-

Note: All input signals shall be low or Hi-Z state when VDD is off.

## 6.2 Signal Electrical Characteristics

Input signals shall be low or High-impedance state when VDD is off.

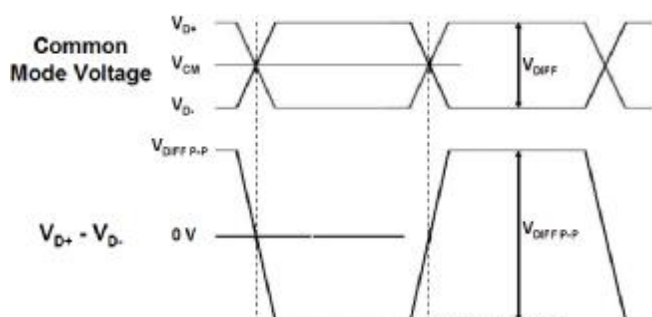
It is recommended to refer the specifications of VESA Display Port Standard V1.2 in detail.

**Table 8 Display Port Main Link**

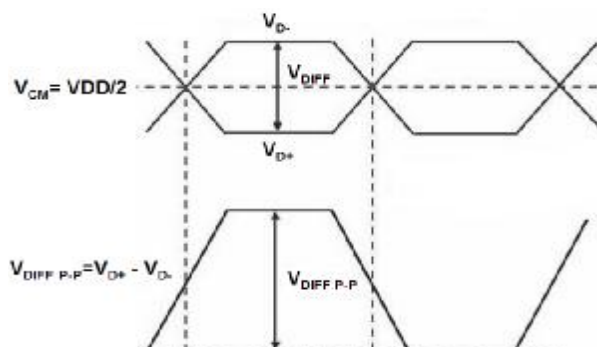
Parameter	Description	Min.	Typ.	Max.	Unit
$V_{CM}$	Differentia Common Mode Voltage	0	-	2.0	V
$V_{Diff\ P-P}$ Level 1	Differential Peak to Peak Voltage Level 1	0.34	0.40	0.46	V
$V_{Diff\ P-P}$ Level 2	Differential Peak to Peak Voltage Level 2	0.51	0.60	0.68	V
$V_{Diff\ P-P}$ Level 3	Differential Peak to Peak Voltage Level 3	0.69	0.80	0.92	V
$V_{Diff\ P-P}$ Level 4	Differential Peak to Peak Voltage Level 4	1.02	1.20	1.38	V

Note: Follow as VESA display port standard V1.2 at both 1.62 and 2.7Gbps link rates.

**Figure 8 Display Port Main Link Signal**



**Figure 9 Display Port AUX\_CH Signal**



**Table 9 Display Port AUX\_CH**

Parameter	Description	Min.	Typ.	Max.	Unit
$V_{CM}$	Differentia Common Mode Voltage	0	$V_{DD}/2$	2	V
$V_{Diff\ P-P}$	Differential Peak to Peak Voltage	0.39	-	1.38	V

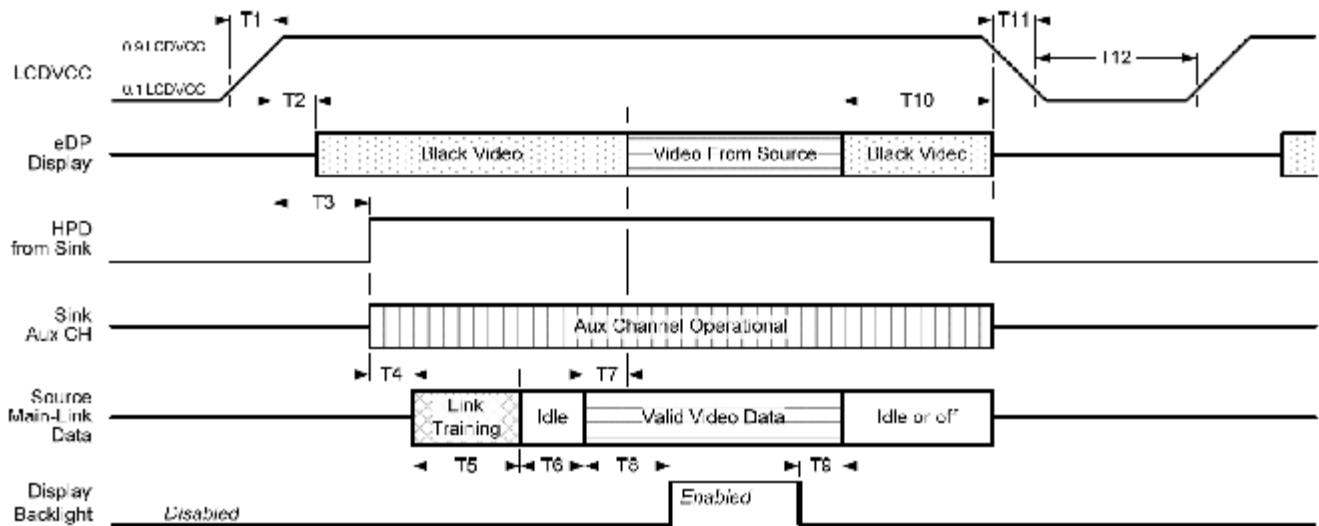
Note: Follow as VESA display port standard V1.2.

**Table 10 Display Port  $V_{HPD}$**

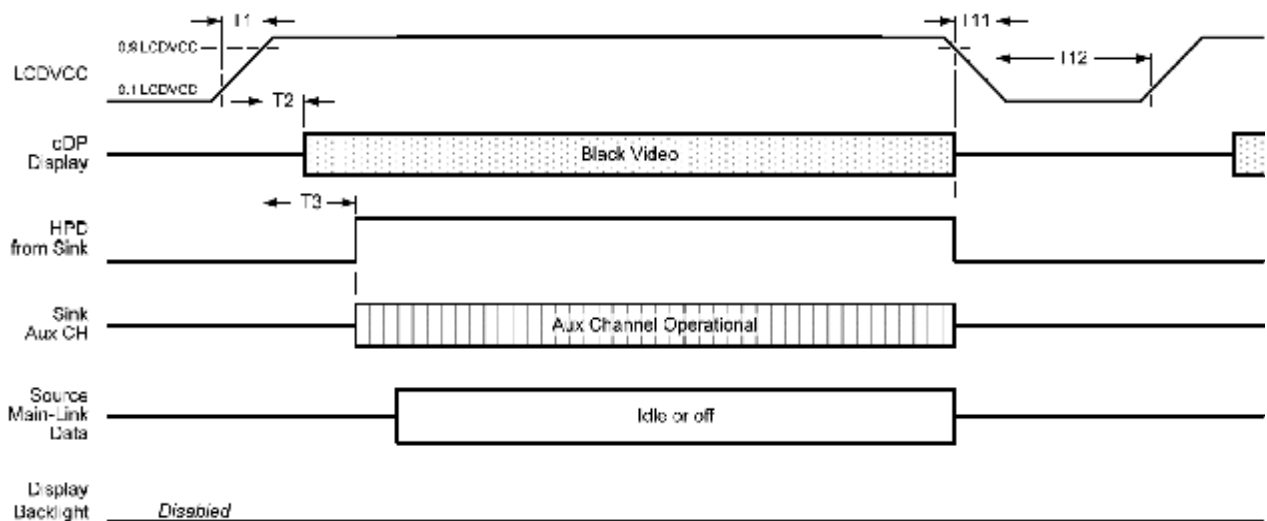
Parameter	Description	Min.	Typ.	Max.	Unit
$V_{HPD}$	HPD Voltage	2.25	-	3.60	V

Note: Follow as VESA display port standard V1.2.

**Figure 10 Display Port Interface Power Up/Down Sequence, Normal System Operation**



**Figure 11 Display Port Interface Power Up/Down Sequence, Aux Channel Transaction Only**



**Table 11 eDP Panel Power Sequence Timing Parameters**

Timing Parameter	Description	Reqd. By	Limits		Notes
			Min.	Max.	
T1	Power rail rise time, 10% to 90%	Source	0.5ms	10ms	-
T2	Delay from LCD VCC to black video generation	Sink	0ms	200ms	Prevents display noise until valid video data is received from the Source.(see note 1 below)
T3	Delay from LCD VCC to HPD high	Sink	0ms	200ms	Sink Aux Channel must be operational upon HPD high.
T4	Delay from HPD high to link training initialization	Source	-	-	Allows for Source to read Link capability and initialize.
T5	Link training duration	Source	-	-	Dependant on Source link training protocol.
T6	Link idle	Source	-	-	Min accounts for required BS-Idle pattern. Max allows for Source frame synchronization.
T7	Delay from valid video data from Source to video on display	Sink	0ms	50ms	Max allows Sink validate video data and timing.
T8	Delay from valid video from Source to backlight enable	Source	-	-	Source must assure display video is stable.
T9	Delay from backlight disable to end of valid video data	Source	-	-	Source must assure backlight is no longer illuminated.(see note 1 below)
T10	Delay from end of valid video data from Source to power off	Source	0ms	500ms	-

T11	Power rail fall time, 90% to 10%	Source	-	10ms	-
T12	Power off time	Source	500ms	-	-

Note 1: The Sink must include the ability to generate black video autonomously. The Sink must automatically enable black video under the following conditions:

- Upon LCDVCC power-on (within T2 max)
- When the “NoVideoStream\_Flag” (VB-ID Bit 3) is received from the Source (at the end of T9)
- When no Main Link data, or invalid video data, is received from the Source. Black video must be displayed within 50ms (max) from the start of either condition. Video data can be deemed invalid based on MSA and timing information, for example.

Note 2: The Sink may implement the ability to disable the black video function, as described in Notes 1, above, for system development and debugging purposes.

Note 3: The Sink must support Aux Channel polling by the Source immediately following LCDVCC power-on without causing damage to the Sink device (the Source can re-try if the Sink is not ready). The Sink must be able to respond to an Aux Channel transaction with the time specified within T3 max.



## 7.0 Interface Timings

### 7.1 Timing Characteristics

Basically, interface timings should match the 1920 x 1080 /60Hz manufacturing guide line timing.

**Table 12 Interface Timings**

Parameter	Symbol	Unit	Min.	Typ.	Max.
Signal Clock Frequency	$f_{dck}$	MHz	132	138.5	140
H Total Time	$T_{hp}$	clocks	2020	2080	2400
H Active Time	HA	clocks	1920		
H Blanking	$T_{hfp}$	clocks	-	160	-
H Frequency	$f_h$	kHz	65	66	72
V Total Time	$T_{vp}$	lines	1090	1111	1200
V Active Time	VA	lines	1080		
V Blanking	$T_{vfp}$	lines	-	31	-
V Frequency	$f_v$	Hz	55	60	65

## 8.0 Power Consumption

Input power specifications are as follows.

The power specification are measured under 25°C and frame frequency under 60Hz.

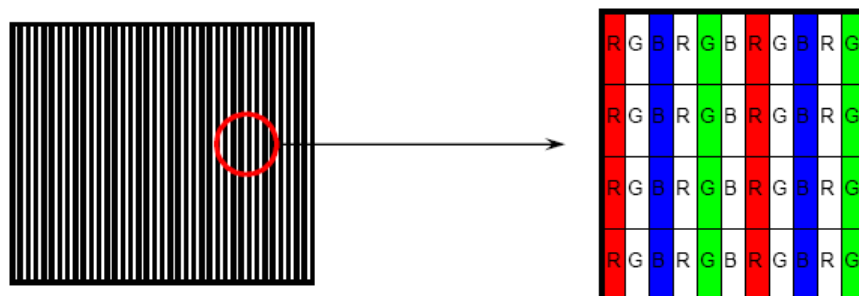
**Table 13 Power Consumption**

Symbol	Parameter	Min.	Typ.	Max.	Units	Condition
VDD	Logic/LCD Drive Voltage	3.0	3.3	3.6	V	-
IDD	VDD Current	-	180	260	mA	Note A,
IDD <sub>MAX</sub>	VDD Current	-	-	260	mA	Note B, C
PDD	VDD Power	-	0.594	0.858	W	Note A, B, C
IRush	Inrush Current	-	-	2	A	Note D, E
VDDrp	Allowable Logic/LCD Drive Ripple Voltage	-	-	100	mV	Vp-p

Note A : IDD<sub>Black</sub> measurement condition  $f_{dck}=138.5$  MHz,  $f_v=60$ Hz, VDD=3.3V, Normal pattern.

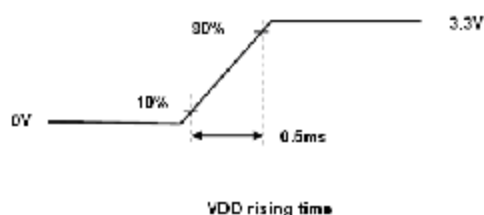
Note B : IDD<sub>MAX</sub> measurement condition  $f_{dck}=138.5$  MHz,  $f_v=60$ Hz, VDD=3.3V, V-Stripe pattern.

Note C : Description of the V-Stripe pattern.



Note D : Measure Condition Figure 12.

**Figure 12 VDD Rising Time**



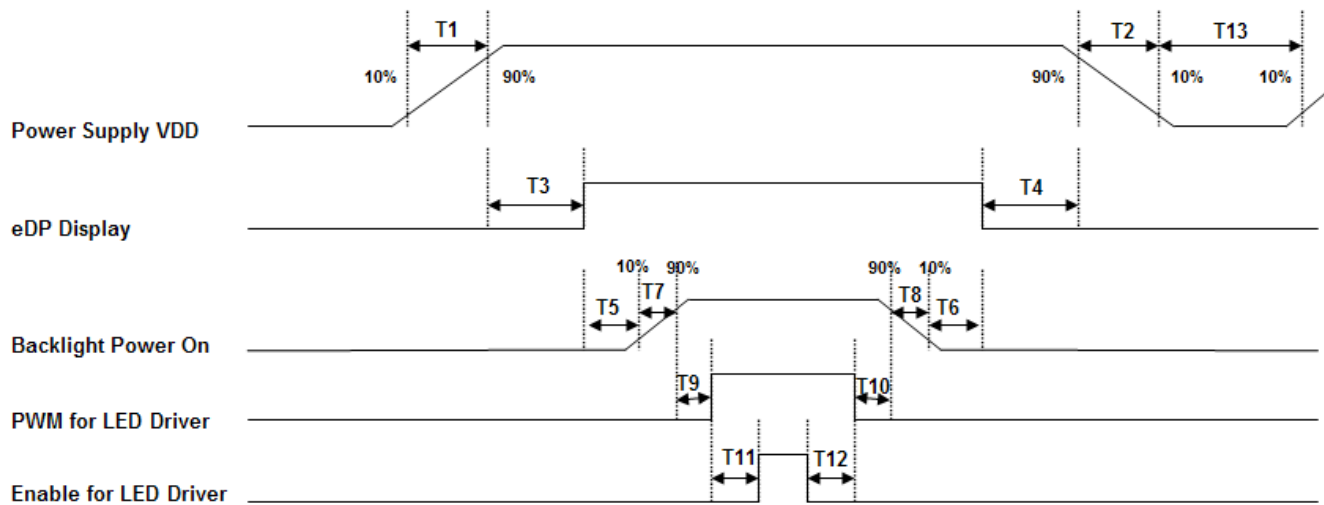
Note E : When the IRush Measure Condition at VDD rising time=1.5ms, the value of IRush(Typ.)= 1A.

## 9.0 Power ON/OFF Sequence

VDD power on/off sequence is as follows. Interface signals are also shown in the chart.

Signals from any system shall be Hi-Z state or low level when VDD is off.

**Figure 13 Power Sequence**

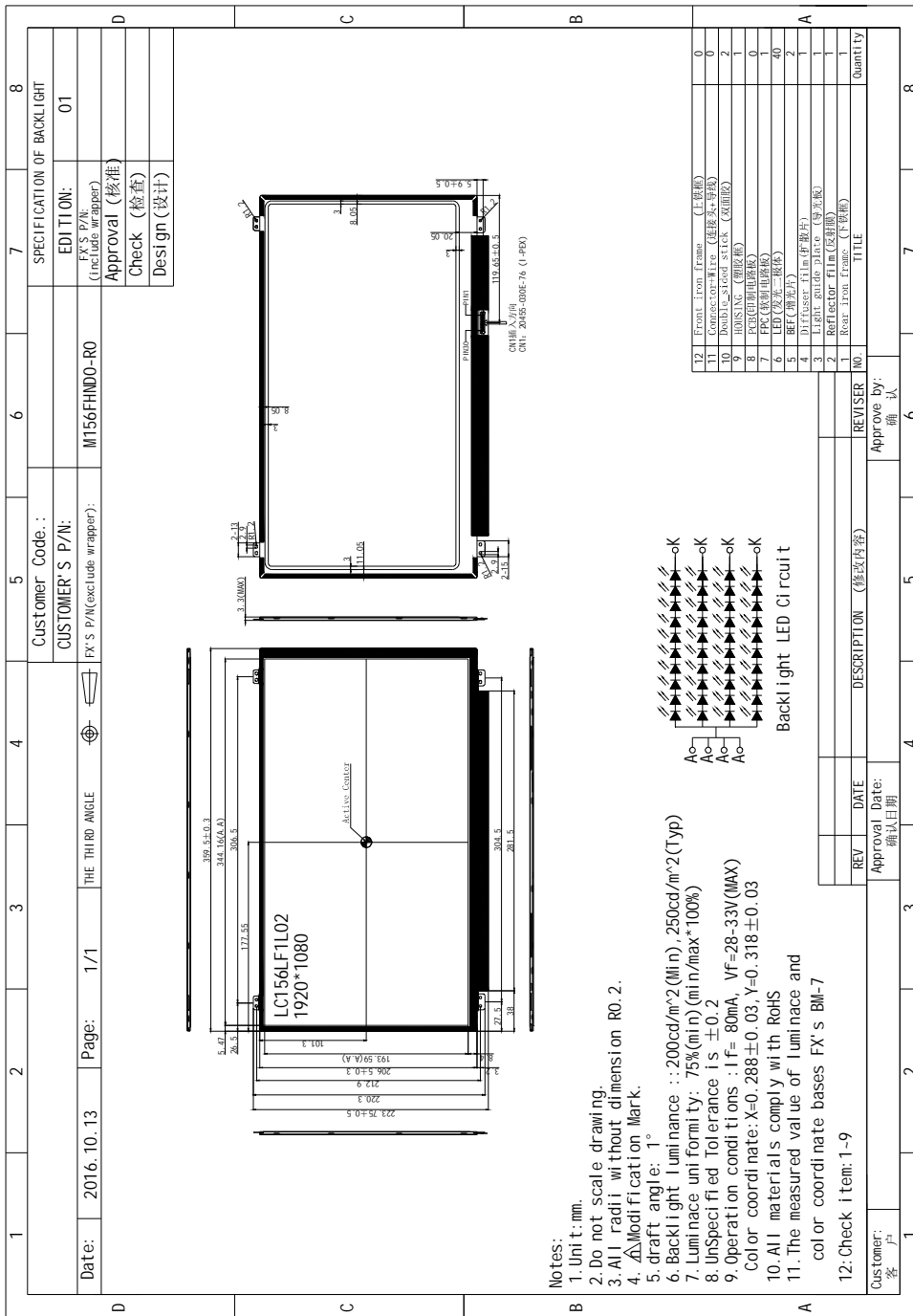


**Table 15 Power Sequencing Requirements**

Parameter	Unit	Min.	Max.
T1	ms	0.5	10
T2	ms	0	10
T3	ms	0	200
T4	ms	0	50
T5	ms	300	-
T6	ms	200	-
T7	ms	0.5	10
T8	ms	0	10
T9	ms	10	-
T10	ms	10	-
T11	ms	10	-
T12	ms	0	-
T13	ms	500	-

# 10.0 Mechanical Characteristics

## Figure 14 Reference Outline Drawing



## **11.0 Package Specification**

**TBD**

## **12.0 General Precaution**

### **12.1 Use Restriction**

This product is not authorized for use in life supporting systems, aircraft navigation control systems, military systems and any other application where performance failure could be life-threatening or otherwise catastrophic.

### **12.2 Handling Precaution**

- (1) Please mount LCD panel by using mounting holes arranged in four corners tightly.
- (2) Do not disassemble or modify the panel. It may damage sensitive parts inside LCD panel, and may cause scratches or dust on the display. SWT does not warrant the panel, if customers disassemble or modify the panel.
- (3) If LCD panel is broken and liquid crystal spills out, do not ingest or inhale liquid Crystal, and do not contact liquid crystal with skin. If liquid crystal contacts mouth or eyes, rinse out with water immediately. If liquid crystal contacts skin or cloths, wash it off immediately with alcohol and Rinse thoroughly with water.
- (4) Disconnect power supply before handling LCD panel.
- (5) Refrain from strong mechanical shock and /or any force to the panel.
- (6) Do not exceed the absolute maximum rating values, such as the supply voltage variation, input voltage variation, variation in parts' parameters, environmental temperature; etc otherwise LCD panel may be damaged. It's recommended employing protection circuit for power supply.
- (7) Do not touch, push or rub the polarizer with anything harder than HB pencil lead. Use fingerstalls of soft gloves in order to keep clean display quality, when Persons handle the LCD panel for incoming inspection or assembly.
- (8) When the surface is dusty, please wipe gently with absorbent cotton or other soft Material. When cleaning the adhesives, please use absorbent cotton wetted with a little Petroleum benzene or other adequate solvent.
- (9) Wipe off saliva or water drops as soon as possible. If saliva or water drops Contact with polarizer for a long time, they may causes deformation or color Fading.
- (10) Protection film must remove very slowly from the surface of LCD panel to prevent from electrostatic occurrence.
- (11) Because LCD panel uses CMOS-IC on circuit board and TFT-LCD panel, it is Very weak to electrostatic discharge, Please be careful with electrostatic Discharge .Persons who handle the panel should be grounded through adequate methods.
- (12) Do not adjust the variable resistor located on the panel.

### **12.3 Storage Precaution**

- (1) Please do not leave LCD panel in the environment of high humidity and high temperature for a long time.
- (2) The panel shall not be exposed under strong light such as direct sunlight. Otherwise, display characteristics may be changed.
- (3) The panel should be stored in a dark place. It is prohibited to apply sunlight or fluorescent light in storage.

### **12.4 Operation Precaution**

- (1) Do not connect or disconnect the panel in the "Power On" condition.
- (2) Power supply should always be turned on/off by 9.0 "Power ON/OFF Sequence".
- (3) Panel has high frequency circuits. Sufficient suppression to the electromagnetic interference

should be done by system manufacturers. Grounding and shielding methods may be important to minimize the interference.

- (4) After installation of the TFT Panel into an enclosure, do not twist nor bend the TFT Panel even momentarily. At designing the enclosure, it should be taken into consideration that no bending/twisting forces are applied to the TFT Panel from outside. Otherwise the TFT Panel may be damaged.

### **12.5 Others**

- (1) Ultra-violet ray filter is necessary for outdoor operation.
- (2) Avoid condensation of water which may result in improper operation or disconnection of electrode.
- (3) If the panel keeps displaying the same pattern for a long period of time, the image may be "sticked" to the screen.
- (4) This panel has its circuitry PCB's on the rear side and should be handled carefully in order not to be stressed.

### **12.6 Disposal**

When disposing LCD panel, obey the local environmental regulations.

## X-ON Electronics

Largest Supplier of Electrical and Electronic Components

*Click to view similar products for [Display Modules](#) category:*

*Click to view products by [Waveshare](#) manufacturer:*

Other Similar products are found below :

[P6171DPR-DC-U](#) [P6191PR-DC-U-V3](#) [17978](#) [20135](#) [RL0F0007000A8GDAASA00](#) [MIKROMEDIA 3 FOR PIC32MZ CAPACITIVE FPI](#)  
[RL0F00101000JGDAASA00](#) [1500CSH](#) [MOD-OLED-128x64](#) [ULCD-104D](#) [ULCD-104DCT](#) [GEN4-ULCD-43DCT-HR](#) [GEN4-ULCD-70P4](#)  
[11769](#) [MIKROMEDIA FOR DSPIC33](#) [MIKROMEDIA FOR PIC24](#) [MIKROMEDIA FOR PIC32](#) [MIKROMEDIA FOR STELLARIS M3](#)  
[MIKROMEDIA HMI 3.5 RES](#) [MIKROMEDIA HMI 5](#) [MIKROMEDIA PLUS FOR FT90X](#) [MIKROMEDIA PLUS FOR PIC32MX7 SHIELD](#)  
[MIKROMEDIA PROTO SHIELD](#) [MIKROMEDIA 5 FOR TIVA SHIELD](#) [MIKROMEDIA CONNECT SHIELD](#) [MIKROMEDIA FOR ARM](#)  
[MIKROMEDIA FOR PSOC5LP](#) [MIKROMEDIA HMI 4.3 UXB](#) [MIKROMEDIA HMI 5 RES](#) [MIKROMEDIA HMI 5 UXB](#) [MIKROMEDIA](#)  
[HMI 7](#) [MIKROMEDIA HMI BREAKOUT BOARD](#) [16381](#) [17916](#) [18205](#) [18625](#) [PIS-0260](#) [GEN4-ULCD-70D](#) [2402630](#) [2402980](#) [2402981](#)  
[2403461](#) [MIKROMEDIA HMI 7 UXB](#) [HMIDT351](#) [MIKROE-3158](#) [MIKROE-3159](#) [GEN4-ULCD-50D-SB-AR](#) [GEN4-ULCD-50D-CLB-SB-](#)  
[AR](#) [PIS-0262](#) [GEN4-ULCD-50DT-SB-AR](#)