

HSF

NOTES:
 Rated Current:3.0AMP.
 Contact Resistance:20mΩ Max.
 Withstand Voltage:1000V AC/DC
 Insulation Resistance:1000MΩ Min.
 Operation Temperature:-40°C to +105°C

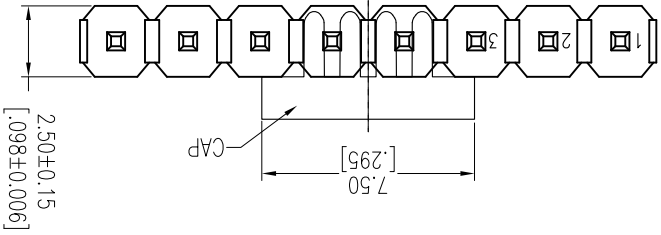
Contact Material:Brass
 Contact Plating:Au or Sn Over Ni
 Insulator Material:PA9T+33%G.F UL94V-0 BK

Ordering Information

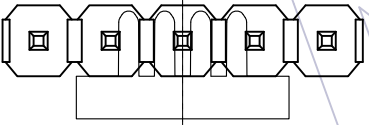
1125-11 XX XX Z XXX C R XX

No. of Pins Contact Plating Pin Length Insulator Packing Series No.
 02-40 G0=Gold Flash L=A+B+2.8 C=PA9T Material P=Tube+CAP R=Tube+CAP
 G4=15u"Gold G5=30u"Gold S0=Gold Flash/Tin S3=10u"Gold/Tin S4=15u"Gold/Tin S5=30u"Gold/Tin SN=Tin SM=Matte Tin

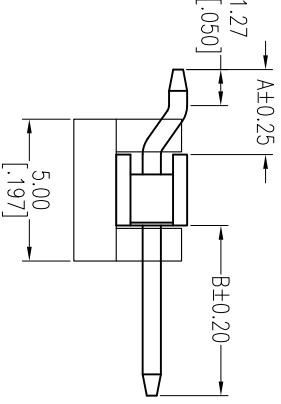
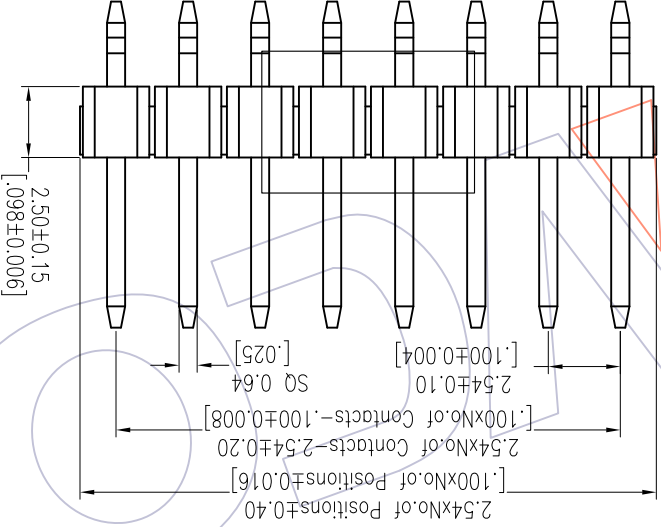
Item	Pin Length	A	B	Mating	Standard	Alternate
	11.80	3.00	6.00	2171	2185	



Dual Numbers



Odd Number



REV	DATE	MODIFICATION DESCRIPTION	CHANGE	DIM TOL	APPROVE	DATE	PROJ.	Customer No.	OPERATION	DRAW	DATE	SCALE	FIT	PART NO.	TITLE:	WCON-Dongguan WCON-Kunshan Http://www.wcon.com	WCON-Dongguan WCON-Kunshan Tel: +86 769 85358220 Fax: +86 769 85358915 E-mail: sdies@wcon.com	WCON-Dongguan WCON-Kunshan Tel: +86 512 57468408 Fax: +86 512 57468468 E-mail: sdiesks@wcon.com	
																			Angle
A0	2012/05/17	NEW		±.3															
A1	2018/01/22	Modify P/N	△1	X.XXX ±0.15															
				X.XX ±0.25	CHECK														
				X.X ±0.40	Ruipeng	2018/01/22													

Recommended P.C.B Layout (Top Side)
 (PCB BOARD TOLERANCE±0.05)

X-ON Electronics

Largest Supplier of Electrical and Electronic Components

Click to view similar products for [Headers & Wire Housings](#) category:

Click to view products by [Wcon](#) manufacturer:

Other Similar products are found below :

[95000-104TRLF](#) [10135584-644402LF](#) [DF62W-EP2022PCA](#) [95000-106TRLF](#) [DF62W-2022SCA](#) [DF62W-EP2022PC](#) [2203348](#) [DF62W-2022SC](#) [1084018](#) [1029039](#) [1084017](#) [802-10-012-10-002000](#) [1112640](#) [1112639](#) [891-007-9SS-BST1T](#) [000-34000](#) [0008550134](#) [0009482033](#) [0009507031](#) [57102-F02-18ULF](#) [57102-S06-03LF](#) [57202-S52-04LF](#) [PCN6-15S-2.5E](#) [0039019024](#) [58102-G61-06LF](#) [582553-1](#) [0009485154](#) [0009508121](#) [0022285053](#) [0050291907](#) [018731A](#) [LY20-4P-DT1-P1E-BR](#) [02.125.8002.8](#) [60101931](#) [60598-1 \(Cut Strip\)](#) [M1625-3R/100](#) [61062-3](#) [61082-181009](#) [CSU011177004](#) [636-1427](#) [638009-1](#) [641938-9](#) [641991-4](#) [644168-1](#) [644827-2](#) [647662-1](#) [65039-019ELF](#) [65692-001LF](#) [65781-018](#) [65781-047](#)