



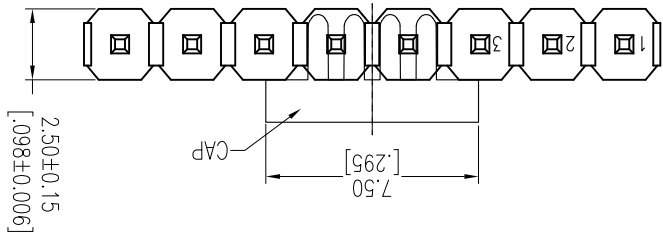
NOTES:  
 Rated Current:3.0AMP.  
 Contact Resistance:20mΩ Max.  
 Withstand Voltage:1000V AC/DC  
 Insulation Resistance:1000MΩ Min.  
 Operation Temperature:-40°C to +105°C

Contact Material:Brass  
 Contact Plating:Au or Sn Over Ni  
 Insulator Material:PA9T+33%G.F UL94V-0 BK

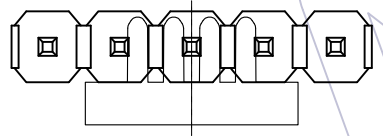
### Ordering Information

1125-11 XX XX Z XXX C R XX  
 No. of Pins Contact Plating Pin Length Insulator Packing Series No.  
 02-40 G0=Gold Flash L=A+B+2.8 C=PA9T Material P=Tube+CAP  
 G4=15u"Gold G5=30u"Gold S0=Gold Flash/Tin S3=10u"Gold/Tin S4=15u"Gold/Tin S5=30u"Gold/Tin SN=Tin SM=Matte Tin  
 R=Tape & Reel+CAP

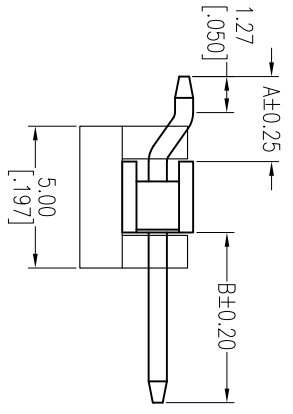
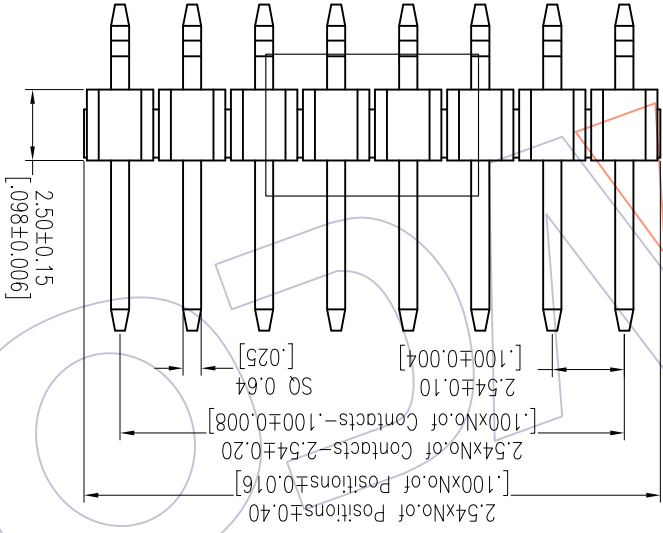
Item	Pin Length	A	B	Mating
Standard	11.80	3.00	6.00	2171 2185
Alternate				



Dual Numbers



Odd Number



REV	DATE	MODIFICATION DESCRIPTION	CHANGE	DIM TOL	APPROVE	DATE	PROJ.	Customer NO.	OPERATION	DRAW	DATE	SCALE	FIT	PART NO.	TITLE:	WCON	
																Angle	APPROVE
A1	2018/01/22	Modify P/N	△1	X.XX ±0.15				PH2.54 SINGLE ROW 90°SMT H=2.5				A4	mm	1125-11XXXXXXCRXX	1125-11XXXXXXCRXX	WCON-Dongguan	WCON-Kunshan
A0	2012/05/17	NEW		X.XX ±0.40								1/1				WCON-Dongguan	WCON-Kunshan

WCON  
 Http://www.wcon.com

WCON-Dongguan  
 Tel: +86 769 85358915  
 Fax: +86 769 85358915  
 E-mail: sdies@wcon.com

WCON-Kunshan  
 Tel: +86 512 57468408  
 Fax: +86 512 57468468  
 E-mail: sdiesks@wcon.com

Recommended P.C.B Layout (Top Side)  
 (PCB BOARD TOLERANCE±0.05)

## X-ON Electronics

Largest Supplier of Electrical and Electronic Components

*Click to view similar products for [Headers & Wire Housings](#) category:*

*Click to view products by [Wcon](#) manufacturer:*

Other Similar products are found below :

[95000-104TRLF](#) [10135584-644402LF](#) [DF62W-EP2022PCA](#) [95000-106TRLF](#) [DF62W-2022SCA](#) [DF62W-EP2022PC](#) [2203348](#) [DF62W-2022SC](#) [1084018](#) [1029039](#) [1084017](#) [802-10-012-10-002000](#) [1112640](#) [1112639](#) [891-007-9SS-BST1T](#) [000-34000](#) [0008550134](#) [0009482033](#) [0009507031](#) [57102-F02-18ULF](#) [57102-S06-03LF](#) [57202-S52-04LF](#) [PCN6-15S-2.5E](#) [0039019024](#) [58102-G61-06LF](#) [582553-1](#) [0009485154](#) [0009508121](#) [0022285053](#) [0050291907](#) [018731A](#) [LY20-4P-DT1-P1E-BR](#) [02.125.8002.8](#) [60101931](#) [60598-1 \(Cut Strip\)](#) [M1625-3R/100](#) [61062-3](#) [61082-181009](#) [CSU011177004](#) [636-1427](#) [638009-1](#) [641938-9](#) [641991-4](#) [644168-1](#) [644827-2](#) [647662-1](#) [65039-019ELF](#) [65692-001LF](#) [65781-018](#) [65781-047](#)