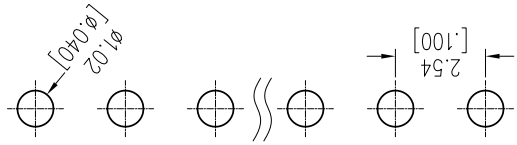


HSF

Recommended P.C.B Layout (Top Side)
(PCB BOARD TOLERANCE±0.05)



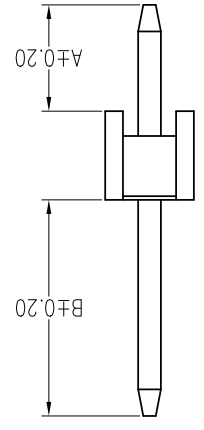
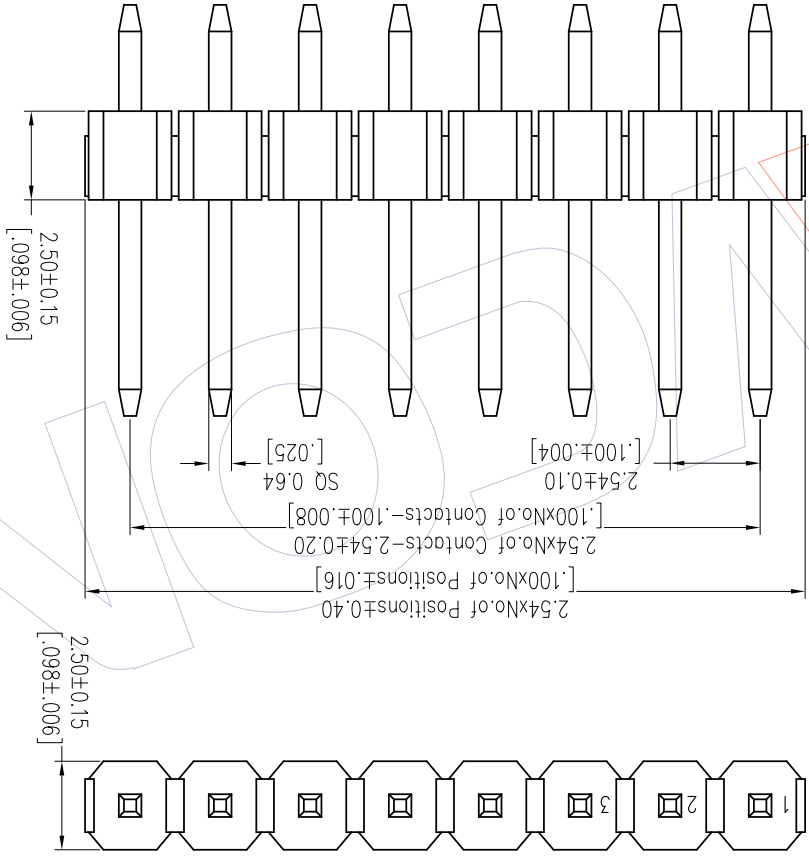
NOTES:
 Rated Current: 3.0AMP.
 Contact Resistance: 20mΩ Max.
 Withstand Voltage: 1000V AC/DC
 Insulation Resistance: 1000MΩ Min.
 Operation Temperature: -40℃ to +105℃
 Contact Material: Brass
 Contact Plating: Au or Sn Over Ni
 Insulator Material: PA9T+3%GF UL94V-0 BK

Ordering Information

1125-11 XX XX S XXX C 0 XX

No. of Pins Contact Plating Pin Length Insulator Packing Series No.
 02-40 G0=Gold Flash L=A+B+2.5 Material 0=PE Bag 01-99
 Insulator C=PA9T T=Tube
 02-40 G0=Gold Flash L=A+B+2.5 Material 0=PE Bag 01-99
 Insulator C=PA9T T=Tube
 G3=10u"Gold Standard:085=8.5
 G4=15u"Gold 095=9.5
 G5=30u"Gold 105=10.5
 S0=Gold Flash/Tin 116=11.6
 S3=10u"Gold/Tin 118=11.8
 S4=15u"Gold/Tin 135=13.5
 S5=30u"Gold/Tin 135=13.5
 SN=Tin
 SM=Matte Tin

Item	Pin Length	A	B	Mating
8.50	3.00	3.00	2135	
9.50	3.00	4.00	2145	
10.50	3.00	5.00	2150	
11.60	3.00	6.10	2171 2185	△A1
11.80	2.40	6.90	2171 2185	
13.50	3.00	8.00		



REV	DATE	MODIFICATION DESCRIPTION	CHANGE	DIM	TOL	APPROVE	DATE	PROJ.	CUSTOMER NO.	WCON-Donguan	WCON-Kunshan
A0	2012/05/17	NEW	-----	Angle	± .3					E-mail: sdies@wcon.com	E-mail: sdies@wcon.com
A1	2016/02/19	MODIFY DRAWING	-----	X.XXX	±0.15					Tel: +86 769 85358920	Tel: +86 512 57468408
A2	2018/01/22	Modify P/N	△A2	X.XX	±0.25	CHECK	DATE	SIZE	A4	WCON-Donguan	
A3	2018/06/02	Cancel PBT & Modify P/N	△A3	X.X	±0.40	DRAW	DATE	SCALE	FIT	WCON-Kunshan	
						OPERATION	DATE	UNIT	mm [inch]	WCON-Kunshan	
						APPROVE	DATE	SHEET	1/1	WCON-Donguan	
						DATE	DATE			WCON-Kunshan	
						OPERATION	DATE	SCALE	FIT	WCON-Kunshan	
						APPROVE	DATE	SHEET	1/1	WCON-Donguan	
						DATE	DATE			WCON-Kunshan	
						OPERATION	DATE	SCALE	FIT	WCON-Kunshan	
						APPROVE	DATE	SHEET	1/1	WCON-Donguan	
						DATE	DATE			WCON-Kunshan	
						OPERATION	DATE	SCALE	FIT	WCON-Kunshan	
						APPROVE	DATE	SHEET	1/1	WCON-Donguan	
						DATE	DATE			WCON-Kunshan	
						OPERATION	DATE	SCALE	FIT	WCON-Kunshan	
						APPROVE	DATE	SHEET	1/1	WCON-Donguan	
						DATE	DATE			WCON-Kunshan	
						OPERATION	DATE	SCALE	FIT	WCON-Kunshan	
						APPROVE	DATE	SHEET	1/1	WCON-Donguan	
						DATE	DATE			WCON-Kunshan	
						OPERATION	DATE	SCALE	FIT	WCON-Kunshan	
						APPROVE	DATE	SHEET	1/1	WCON-Donguan	
						DATE	DATE			WCON-Kunshan	
						OPERATION	DATE	SCALE	FIT	WCON-Kunshan	
						APPROVE	DATE	SHEET	1/1	WCON-Donguan	
						DATE	DATE			WCON-Kunshan	
						OPERATION	DATE	SCALE	FIT	WCON-Kunshan	
						APPROVE	DATE	SHEET	1/1	WCON-Donguan	
						DATE	DATE			WCON-Kunshan	
						OPERATION	DATE	SCALE	FIT	WCON-Kunshan	
						APPROVE	DATE	SHEET	1/1	WCON-Donguan	
						DATE	DATE			WCON-Kunshan	
						OPERATION	DATE	SCALE	FIT	WCON-Kunshan	
						APPROVE	DATE	SHEET	1/1	WCON-Donguan	
						DATE	DATE			WCON-Kunshan	
						OPERATION	DATE	SCALE	FIT	WCON-Kunshan	
						APPROVE	DATE	SHEET	1/1	WCON-Donguan	
						DATE	DATE			WCON-Kunshan	
						OPERATION	DATE	SCALE	FIT	WCON-Kunshan	
						APPROVE	DATE	SHEET	1/1	WCON-Donguan	
						DATE	DATE			WCON-Kunshan	
						OPERATION	DATE	SCALE	FIT	WCON-Kunshan	
						APPROVE	DATE	SHEET	1/1	WCON-Donguan	
						DATE	DATE			WCON-Kunshan	
						OPERATION	DATE	SCALE	FIT	WCON-Kunshan	
						APPROVE	DATE	SHEET	1/1	WCON-Donguan	
						DATE	DATE			WCON-Kunshan	
						OPERATION	DATE	SCALE	FIT	WCON-Kunshan	
						APPROVE	DATE	SHEET	1/1	WCON-Donguan	
						DATE	DATE			WCON-Kunshan	
						OPERATION	DATE	SCALE	FIT	WCON-Kunshan	
						APPROVE	DATE	SHEET	1/1	WCON-Donguan	
						DATE	DATE			WCON-Kunshan	
						OPERATION	DATE	SCALE	FIT	WCON-Kunshan	
						APPROVE	DATE	SHEET	1/1	WCON-Donguan	
						DATE	DATE			WCON-Kunshan	
						OPERATION	DATE	SCALE	FIT	WCON-Kunshan	
						APPROVE	DATE	SHEET	1/1	WCON-Donguan	
						DATE	DATE			WCON-Kunshan	
						OPERATION	DATE	SCALE	FIT	WCON-Kunshan	
						APPROVE	DATE	SHEET	1/1	WCON-Donguan	
						DATE	DATE			WCON-Kunshan	
						OPERATION	DATE	SCALE	FIT	WCON-Kunshan	
						APPROVE	DATE	SHEET	1/1	WCON-Donguan	
						DATE	DATE			WCON-Kunshan	
						OPERATION	DATE	SCALE	FIT	WCON-Kunshan	
						APPROVE	DATE	SHEET	1/1	WCON-Donguan	
						DATE	DATE			WCON-Kunshan	
						OPERATION	DATE	SCALE	FIT	WCON-Kunshan	
						APPROVE	DATE	SHEET	1/1	WCON-Donguan	
						DATE	DATE			WCON-Kunshan	
						OPERATION	DATE	SCALE	FIT	WCON-Kunshan	
						APPROVE	DATE	SHEET	1/1	WCON-Donguan	
						DATE	DATE			WCON-Kunshan	
						OPERATION	DATE	SCALE	FIT	WCON-Kunshan	
						APPROVE	DATE	SHEET	1/1	WCON-Donguan	
						DATE	DATE			WCON-Kunshan	
						OPERATION	DATE	SCALE	FIT	WCON-Kunshan	
						APPROVE	DATE	SHEET	1/1	WCON-Donguan	
						DATE	DATE			WCON-Kunshan	
						OPERATION	DATE	SCALE	FIT	WCON-Kunshan	
						APPROVE	DATE	SHEET	1/1	WCON-Donguan	
						DATE	DATE			WCON-Kunshan	
						OPERATION	DATE	SCALE	FIT	WCON-Kunshan	
						APPROVE	DATE	SHEET	1/1	WCON-Donguan	
						DATE	DATE			WCON-Kunshan	
						OPERATION	DATE	SCALE	FIT	WCON-Kunshan	
						APPROVE	DATE	SHEET	1/1	WCON-Donguan	
						DATE	DATE			WCON-Kunshan	
						OPERATION	DATE	SCALE	FIT	WCON-Kunshan	
						APPROVE	DATE	SHEET	1/1	WCON-Donguan	
						DATE	DATE			WCON-Kunshan	
						OPERATION	DATE	SCALE	FIT	WCON-Kunshan	
						APPROVE	DATE	SHEET	1/1	WCON-Donguan	
						DATE	DATE			WCON-Kunshan	
						OPERATION	DATE	SCALE	FIT	WCON-Kunshan	
						APPROVE	DATE	SHEET	1/1	WCON-Donguan	
						DATE	DATE			WCON-Kunshan	
						OPERATION	DATE	SCALE	FIT	WCON-Kunshan	
						APPROVE	DATE	SHEET	1/1	WCON-Donguan	
						DATE	DATE			WCON-Kunshan	
						OPERATION	DATE	SCALE	FIT	WCON-Kunshan	
						APPROVE	DATE	SHEET	1/1	WCON-Donguan	
						DATE	DATE			WCON-Kunshan	
						OPERATION	DATE	SCALE	FIT	WCON-Kunshan	
						APPROVE	DATE	SHEET	1/1	WCON-Donguan	
						DATE	DATE			WCON-Kunshan	
						OPERATION	DATE	SCALE	FIT	WCON-Kunshan	
						APPROVE	DATE	SHEET	1/1	WCON-Donguan	
						DATE	DATE			WCON-Kunshan	
						OPERATION	DATE	SCALE	FIT	WCON-Kunshan	
						APPROVE	DATE	SHEET	1/1	WCON-Donguan	
						DATE	DATE			WCON-Kunshan	
						OPERATION	DATE	SCALE	FIT	WCON-Kunshan	
						APPROVE	DATE	SHEET	1/1	WCON-Donguan	
						DATE	DATE			WCON-Kunshan	
						OPERATION	DATE	SCALE	FIT	WCON-Kunshan	
						APPROVE	DATE	SHEET	1/1	WCON-Donguan	
						DATE	DATE			WCON-Kunshan	
						OPERATION	DATE	SCALE	FIT	WCON-Kunshan	
						APPROVE	DATE	SHEET	1/1	WCON-Donguan	
						DATE	DATE			WCON-Kunshan	
						OPERATION	DATE	SCALE	FIT	WCON-Kunshan	
						APPROVE	DATE	SHEET	1/1	WCON-Donguan	
						DATE	DATE			WCON-Kunshan	
						OPERATION	DATE	SCALE	FIT	WCON-Kunshan	
						APPROVE	DATE	SHEET	1/1	WCON-Donguan	
						DATE	DATE			WCON-Kunshan	
						OPERATION	DATE	SCALE	FIT	WCON-Kunshan	
						APPROVE	DATE	SHEET	1/1	WCON-Donguan	
						DATE	DATE			WCON-Kunshan	
						OPERATION	DATE	SCALE	FIT	WCON-Kunshan	
						APPROVE	DATE	SHEET	1/1	WCON-Donguan	
						DATE	DATE			WCON-Kunshan	
						OPERATION	DATE	SCALE	FIT	WCON-Kunshan	
						APPROVE	DATE	SHEET	1/1	WCON-Donguan	
						DATE	DATE			WCON-Kunshan	
						OPERATION	DATE	SCALE	FIT	WCON-Kunshan	
						APPROVE	DATE	SHEET	1/1	WCON-Donguan	
						DATE	DATE			WCON-Kunshan	
						OPERATION	DATE	SCALE	FIT	WCON-Kunshan	
						APPROVE	DATE	SHEET	1/1	WCON-Donguan	
						DATE	DATE			WCON-Kunshan	

X-ON Electronics

Largest Supplier of Electrical and Electronic Components

Click to view similar products for [Headers & Wire Housings](#) category:

Click to view products by [Wcon](#) manufacturer:

Other Similar products are found below :

[95000-104TRLF](#) [10135584-644402LF](#) [DF62W-EP2022PCA](#) [95000-106TRLF](#) [DF62W-2022SCA](#) [DF62W-EP2022PC](#) [2203348](#) [DF62W-2022SC](#) [1084018](#) [1029039](#) [1084017](#) [802-10-012-10-002000](#) [1112640](#) [1112639](#) [891-007-9SS-BST1T](#) [000-34000](#) [0008550134](#) [0009482033](#) [0009507031](#) [57102-F02-18ULF](#) [57102-S06-03LF](#) [57202-S52-04LF](#) [PCN6-15S-2.5E](#) [0039019024](#) [58102-G61-06LF](#) [582553-1](#) [0009485154](#) [0009508121](#) [0022285053](#) [0050291907](#) [018731A](#) [LY20-4P-DT1-P1E-BR](#) [02.125.8002.8](#) [60101931](#) [60598-1 \(Cut Strip\)](#) [M1625-3R/100](#) [61062-3](#) [61082-181009](#) [CSU011177004](#) [636-1427](#) [638009-1](#) [641938-9](#) [641991-4](#) [644168-1](#) [644827-2](#) [647662-1](#) [65039-019ELF](#) [65692-001LF](#) [65781-018](#) [65781-047](#)