



NOTES:  
 Rated Current:3.0AMP.  
 Contact Resistance:20mΩ Max.  
 Withstand Voltage:100V AC/DC  
 Insulation Resistance:100MΩ Min.  
 Operation Temperature:-40°C to +105°C  
 Contact Material:Brass  
 Contact Plating:Au or Sn Over Ni  
 Insulator Material:PA9T+33%GF UL94V-0 BK

## Ordering Information

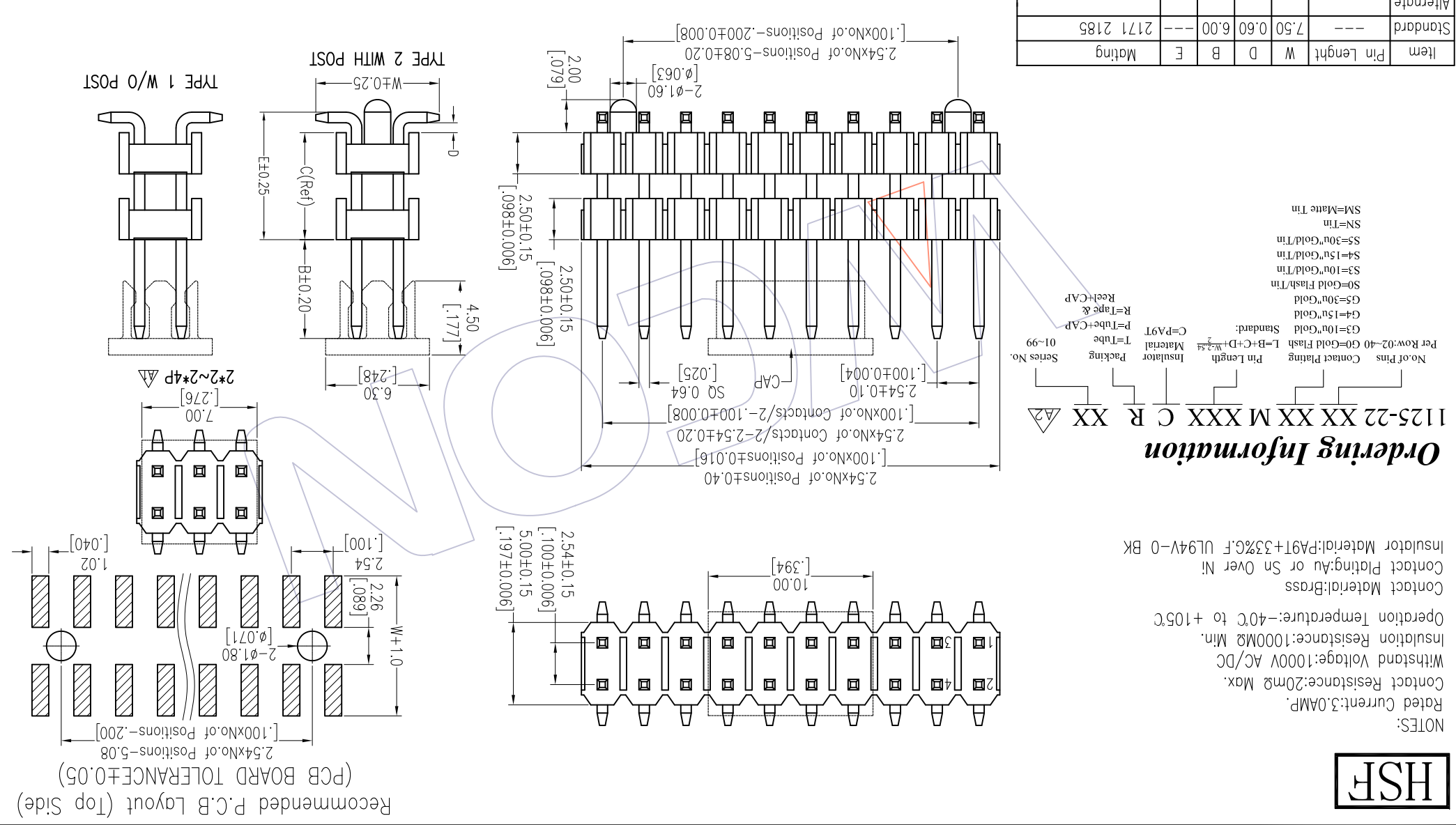
1125-22 XX XX M XXX C R XX  $\Delta$

No. of Pins Contact Plating Pin Length Insulator Packing Series No.  
 Per Row:02~40 G0=Gold Flash L=B+C+D+W<sub>2.54</sub> C=PA9T Material T=Tube P=Tube+CAP R=Tape & Reel+CAP  
 S0=Gold Flash/Tin G3=10u"Gold G4=15u"Gold G5=30u"Gold S3=10u"Gold/Tin S4=15u"Gold/Tin S5=30u"Gold/Tin SN=Tin SM=Mate Tin

Item	Pin Length	W	D	B	E	Mating
Standard	---	7.50	0.60	6.00	---	2171 2185
Alternate						

REV	DATE	MODIFICATION DESCRIPTION	CHANGE	DIM	TOL	APPROVE	DATE	PROJ.	CUSTOMER NO.
A2	2018/01/22	Modify P/N	$\Delta$	X.X	$\pm 0.40$	OPERATION	2018/01/22	Rupeng	1125-22XXXXMXXXCRXX
A1	2012/10/31	Modify Drawing	---	X.XXX	$\pm 0.15$	CHECK			PH2.54 DUAL ROW
A0	2012/05/28	NEW	---	Angle	$\pm .3$	APPROVE			DOUBLE PLASTIC SMT H=2.5

WCON  
 Http://www.wcon.com  
 WCON-Dongguan  
 WCON-Kunshan  
 Tel: +86 769 85358920  
 Tel: +86 512 57468408  
 Fax: +86 769 85358915  
 Fax: +86 512 57468468  
 E-mail: sdies@wcon.com  
 E-mail: sdiesks@wcon.com



Recommended P.C.B Layout (Top Side)  
 (PCB BOARD TOLERANCE $\pm 0.05$ )  
 2.54xNo. of Positions-5.08  
 [100xNo. of Positions-.200]

## X-ON Electronics

Largest Supplier of Electrical and Electronic Components

*Click to view similar products for [Headers & Wire Housings](#) category:*

*Click to view products by [Wcon](#) manufacturer:*

Other Similar products are found below :

[95000-104TRLF](#) [10135584-644402LF](#) [DF62W-EP2022PCA](#) [95000-106TRLF](#) [DF62W-2022SCA](#) [DF62W-EP2022PC](#) [2203348](#) [DF62W-2022SC](#) [1084018](#) [1029039](#) [1084017](#) [802-10-012-10-002000](#) [1112640](#) [1112639](#) [891-007-9SS-BST1T](#) [000-34000](#) [0008550134](#) [0009482033](#) [0009507031](#) [57102-F02-18ULF](#) [57102-S06-03LF](#) [57202-S52-04LF](#) [PCN6-15S-2.5E](#) [0039019024](#) [58102-G61-06LF](#) [582553-1](#) [0009485154](#) [0009508121](#) [0022285053](#) [0050291907](#) [018731A](#) [LY20-4P-DT1-P1E-BR](#) [02.125.8002.8](#) [60101931](#) [60598-1 \(Cut Strip\)](#) [M1625-3R/100](#) [61062-3](#) [61082-181009](#) [CSU011177004](#) [636-1427](#) [638009-1](#) [641938-9](#) [641991-4](#) [644168-1](#) [644827-2](#) [647662-1](#) [65039-019ELF](#) [65692-001LF](#) [65781-018](#) [65781-047](#)