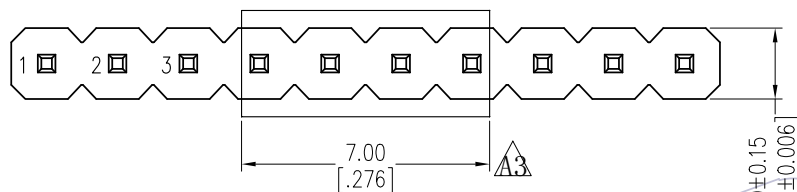
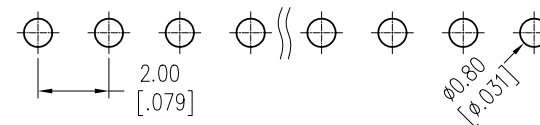


NOTES:

Rated Current: 2.0AMP.  
 Contact Resistance: 20mΩ Max.  
 Withstand Voltage: 500V AC/DC  
 Insulation Resistance: 1000MΩ Min.  
 Operation Temperature: -40℃ to +125℃(GOLD)  
 -40℃ to +105℃(TIN)  $\Delta 3$   
 Contact Material: Brass  
 Contact Plating: Au or Sn Over Ni  
 Insulator Material: PA9T+33%G.F UL94V-0 BK

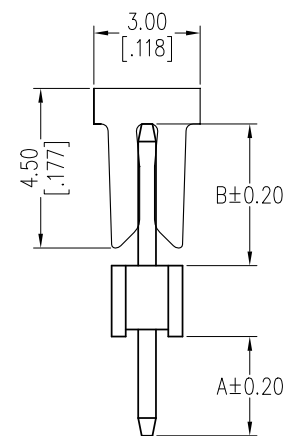
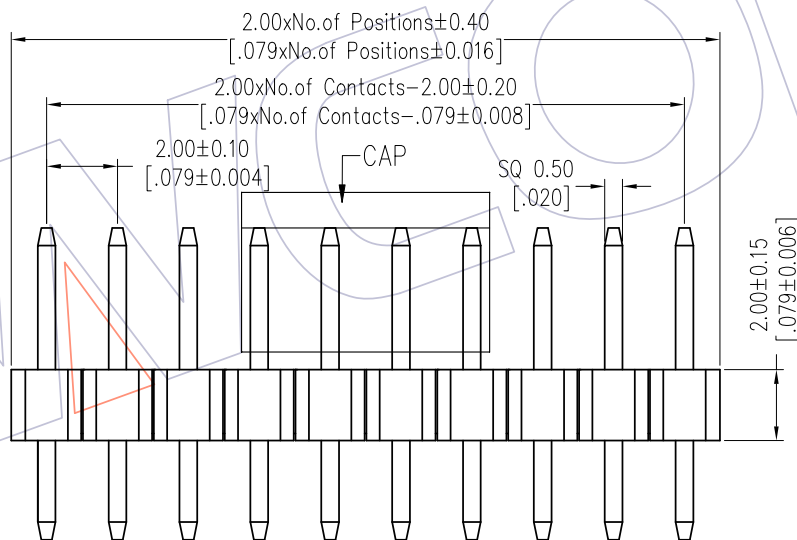
Recommended P.C.B Layout (Top Side)  
 (PCB BOARD TOLERANCE  $\pm 0.05$ )



**Ordering Information**

1220-11 XX XX S XXX C X XX  $\Delta 1$

No. of Pins	Contact Plating	Pin Length	Insulator Material	Packing	Series No.
02-40	G0=Gold Flash G3=10u"Gold G4=15u"Gold G5=30u"Gold	L=A+B+2.0 Standard:068=6.8 078=7.8	C=PA9T	0=PE Bag T=Tube R=Tape&Reel+CAP	01-99
	S0=Gold Flash/Tin S3=10u"Gold/Tin S4=15u"Gold/Tin S5=30u"Gold/Tin SN=Tin SM=Matte Tin	088=8.8			



Item	Pin Length	A	B	Mating
Standard	6.80	2.80	2.00	2220T 2221 2227T 2228
	7.80	2.80	3.00	2235
	8.80	2.80	4.00	2240 2243 2263 2272
	5.80	1.20	2.60	
	7.50	3.00	2.50	
	8.00	2.50	3.50	
	8.70	2.70	4.00	
	9.00	3.00	4.00	
	9.50	2.50	5.00	
	10.00	3.00	5.00	
	10.80	2.80	6.00	
	11.00	3.00	6.00	
	12.00	3.00	7.00	
12.20	2.60	7.60		

A3	2019/07/20	Modify the CAP	$\Delta 3$	OPERATION	DRAW	DATE	SCALE	Fit	PART NO.
A2	2018/06/25	Add the CAP	$\Delta 2$	x.x $\pm 0.40$	<i>Diag</i>	2019/07/20	UNIT	mm	1220-11XXXXSXXXCXXX $\Delta 1$
A1	2018/01/18	Modify P/N	$\Delta 1$	x.xx $\pm 0.25$	CHECK	DATE	SIZE	A4	TITLE:
A0	2012/04/26	NEW	-----	x.xxx $\pm 0.15$	APPROVE	DATE	SHEET	1/1	PH2.0 SINGLE ROW 180°H=2.0
REV	DATE	MODIFICATION DESCRIPTION	CHANGE	Angle $\pm 3'$			PROJ.		Customer NO.

**WCON**  
 Http: www.wcon.com  
 WCON-Dongguan      WCON-Kunshan  
 Tel: +86 769 85358920      Tel: +86 512 57468408  
 Fax: +86 769 85358915      Fax: +86 512 57468468  
 E-mail: sales@wcon.com      E-mail: salesks@wcon.com

## X-ON Electronics

Largest Supplier of Electrical and Electronic Components

*Click to view similar products for [Headers & Wire Housings](#) category:*

*Click to view products by [Wcon](#) manufacturer:*

Other Similar products are found below :

[57102-F02-18ULF](#) [58102-G61-06LF](#) [0009485154](#) [009176003701906](#) [0050291907](#) [02.125.8002.8](#) [609-3404](#) [61062-3](#) [622-0430](#) [622-3653LF](#)  
[63453-116](#) [636-1030](#) [636-1427](#) [636-3427](#) [636-4007](#) [641938-9](#) [644827-2](#) [65495-038](#) [65692-001LF](#) [65781-018](#) [65781-047](#) [65817-010LF](#)  
[65817-015LF](#) [66207-023LF](#) [67016-026LF](#) [67095-007LF](#) [68631-112](#) [68645-018](#) [68648-049](#) [699319-000](#) [70.362.1628.0](#) [70-4210](#) [70-4226B](#)  
[70-4853B](#) [707-5020](#) [707-5028](#) [71.350.2428.0](#) [71961-016LF](#) [733-134](#) [754199-000](#) [760-3052](#) [787-8014-00](#) [FCN-367T-T012/H](#) [80.063.4001.1](#)  
[800-90-001-10-001000](#) [800-90-010-10-002000](#) [801-43-002-10-013000](#) [801-43-006-10-002000](#) [803-41-018-10-001000](#) [803-43-014-20-](#)  
[001000](#)