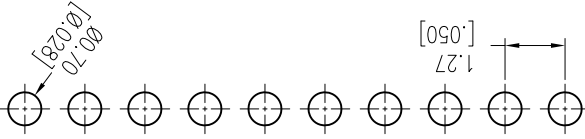


HSP

Recommended P.C.B Layout (Top Side)
(PCB BOARD TOLERANCE±0.05)



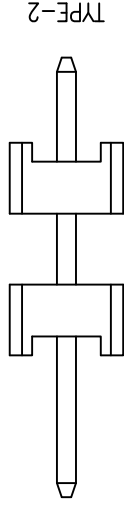
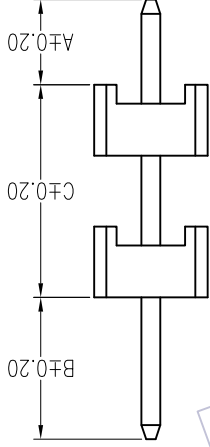
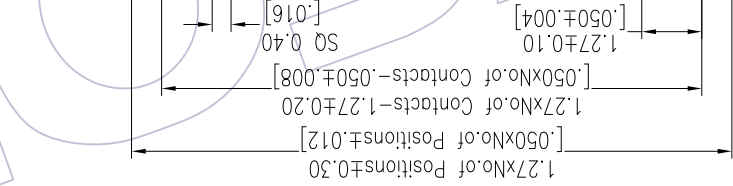
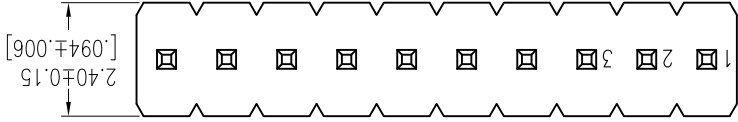
NOTES:
Rated Current:1.0AMP.
Contact Resistance:20mΩ Max.
Withstand Voltage:500V AC/DC
Insulation Resistance:1000MΩ Min.
Operation Temperature:-40°C to +105°C

Contact Material:Brass
Contact Plating:Au or Sn Over Ni
Insulator Material:PA9T+33%G.F UL94V-0 BK

Ordering Information
1315-21 XX XX S XXX C A XX

No.of Pins Contact Plating Pin Length Insulator Packing Series No.
01-50 G0=Gold Flash L=A+B+C C=PA9T A=Tray 01-99

G3=10u"Gold
G4=15u"Gold
G5=30u"Gold
S0=Gold Flash/Tin
S3=10u"Gold/Tin
S4=15u"Gold/Tin
S5=30u"Gold/Tin
SN=Tin
SM=Matte Tin



Pin Length	A	B	C	Mating
---	1.80	1.90	---	2321
---	1.80	3.00	---	2334
---	1.80	4.00	---	2344

REV	DATE	MODIFICATION DESCRIPTION	CHANGE	DIM		OPERATION	DRAW	DATE	SCALE	Fitt	PART NO.	TITLE:	Customer NO.		PROJ.			
				Angle	TOL								APPROVE	DATE		SHEET	Customer NO.	
A0	2012/03/15	NEW	---	X.XXX	±0.15	William Chen	2018/01/15	A4	1/1	1.27 Pin Header, SINGLE ROW, S/T, DOUBLE PLASTIC, H=1.5	WCON-Dongguan	WCON-Kunshan	1315-21XXXXXXX	1315-21XXXXXXX	2018/01/15	William Chen	2018/01/15	1315-21XXXXXXX
A1	2018/01/15	MODIFY PART NO.	---	X.XX	±0.25	William Chen	2018/01/15	A4	1/1	1.27 Pin Header, SINGLE ROW, S/T, DOUBLE PLASTIC, H=1.5	WCON-Dongguan	WCON-Kunshan	1315-21XXXXXXX	1315-21XXXXXXX	2018/01/15	William Chen	2018/01/15	1315-21XXXXXXX

WCON

WCON-Dongguan
Tel: +86 769 85358920
Fax: +86 769 85358915
E-mail: sdies@wcon.com

WCON-Kunshan
Tel: +86 512 57468408
Fax: +86 512 57468468
E-mail: sdiesks@wcon.com

Http: www.wcon.com

X-ON Electronics

Largest Supplier of Electrical and Electronic Components

Click to view similar products for [Headers & Wire Housings](#) category:

Click to view products by [Wcon](#) manufacturer:

Other Similar products are found below :

[95000-104TRLF](#) [10135584-644402LF](#) [DF62W-EP2022PCA](#) [95000-106TRLF](#) [DF62W-2022SCA](#) [DF62W-EP2022PC](#) [2203348](#) [DF62W-2022SC](#) [1084018](#) [1029039](#) [1084017](#) [802-10-012-10-002000](#) [1112640](#) [1112639](#) [891-007-9SS-BST1T](#) [000-34000](#) [0008550134](#) [0009482033](#) [0009507031](#) [57102-F02-18ULF](#) [57102-S06-03LF](#) [57202-S52-04LF](#) [PCN6-15S-2.5E](#) [0039019024](#) [58102-G61-06LF](#) [582553-1](#) [0009485154](#) [0009508121](#) [0022285053](#) [0050291907](#) [018731A](#) [LY20-4P-DT1-P1E-BR](#) [02.125.8002.8](#) [60101931](#) [60598-1 \(Cut Strip\)](#) [M1625-3R/100](#) [61062-3](#) [61082-181009](#) [CSU011177004](#) [636-1427](#) [638009-1](#) [641938-9](#) [641991-4](#) [644168-1](#) [644827-2](#) [647662-1](#) [65039-019ELF](#) [65692-001LF](#) [65781-018](#) [65781-047](#)