

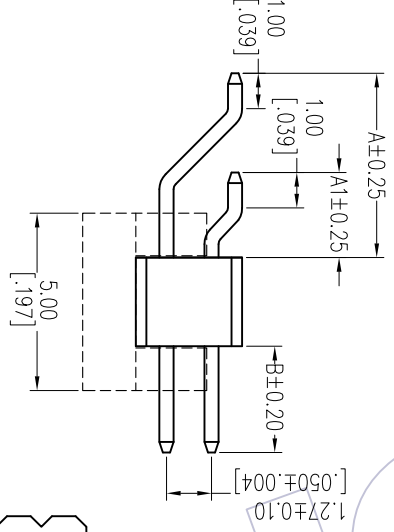
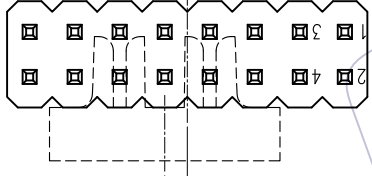
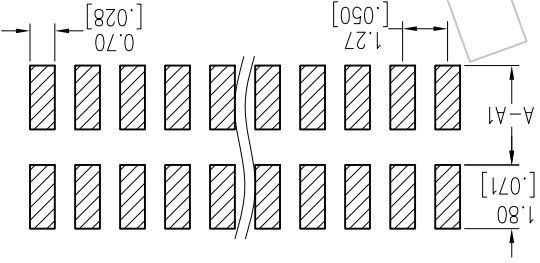
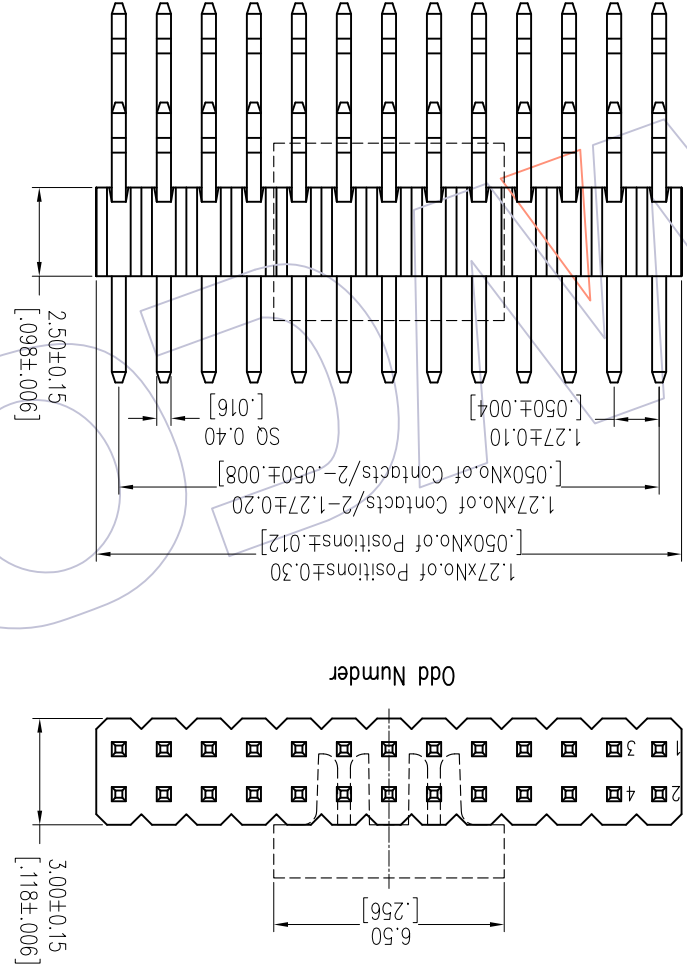
HSF

NOTES:
 Rated Current: 1.0AMP
 Contact Resistance: 20mΩ Max.
 Withstand Voltage: 500V AC/DC
 Insulation Resistance: 1000MΩ Min.
 Operation Temperature: -40°C to +105°C
 Contact Material: Brass
 Contact Plating: Au or Sn Over Ni
 Insulator Material: PA9T+3%GF UL94V-0 BK

Ordering Information
 1325-12 XX XX Z XXX C R XX

No. of Pins Contact Plating Pin Length(Short) Insulator
 Per Row: 01-50 G0=Gold Flash L=A1+B+2.8 C=PA9T
 Series No. 01-99
 Packing G3=10u"Gold Standard: 071=7.1
 G4=15u"Gold 082=8.2
 G5=30u"Gold A=Tray 092=9.2
 S3=10u"Gold/Tin P=Tube+CAP
 S4=15u"Gold/Tin R=Tape&Reel+CAP
 S5=30u"Gold/Tin SM=Matte Tin
 SN=Tin

Item	Pin Length	A1	A	B	Mating
Standard	8.2	2.40	5.20	3.00	2344
	7.1	2.40	5.20	1.90	2321
Alternate	9.2	2.40	5.20	4.00	2344



REV	DATE	MODIFICATION DESCRIPTION	CHANG	DIM	TOL	APPROVE	DATE	PROJ.	Customer NO.
A0	2012/03/31	NEW	-----	Angle	± .3	APPROVE	DATE	PROJ.	Customer NO.
A1	2013/06/07	Modify Drawing	-----	X.XXX	±0.15	CHECK	DATE	SIZE	1.27 Pin Header, DUAL ROW, R/A&SMT, WITHOUT POST, H=2.5
A2	2018/01/18	MODIFY PART NO.	-----	X.X	±0.40	William Chen	2018/01/18	UNIT	1325-12XXXXXXCXXX
						OPERATION	DATE	SCALE	1325-12XXXXXXCXXX

WCON-Dongguan
 WCON-Kunshan
 Tel: +86 769 85358920
 Fax: +86 512 57468468
 E-mail: sdies@wcon.com
 Http: www.wcon.com

WCON

Recommended P.C.B Layout (Top Side)
 (PCB BOARD TOLERANCE±0.05)

X-ON Electronics

Largest Supplier of Electrical and Electronic Components

Click to view similar products for [Headers & Wire Housings](#) category:

Click to view products by [Wcon](#) manufacturer:

Other Similar products are found below :

[95000-104TRLF](#) [10135584-644402LF](#) [DF62W-EP2022PCA](#) [95000-106TRLF](#) [DF62W-2022SCA](#) [DF62W-EP2022PC](#) [2203348](#) [DF62W-2022SC](#) [1084018](#) [1029039](#) [1084017](#) [802-10-012-10-002000](#) [1112640](#) [1112639](#) [891-007-9SS-BST1T](#) [000-34000](#) [0008550134](#) [0009482033](#) [0009507031](#) [57102-F02-18ULF](#) [57102-S06-03LF](#) [57202-S52-04LF](#) [PCN6-15S-2.5E](#) [0039019024](#) [58102-G61-06LF](#) [582553-1](#) [0009485154](#) [0009508121](#) [0022285053](#) [0050291907](#) [018731A](#) [LY20-4P-DT1-P1E-BR](#) [02.125.8002.8](#) [60101931](#) [60598-1 \(Cut Strip\)](#) [M1625-3R/100](#) [61062-3](#) [61082-181009](#) [CSU011177004](#) [636-1427](#) [638009-1](#) [641938-9](#) [641991-4](#) [644168-1](#) [644827-2](#) [647662-1](#) [65039-019ELF](#) [65692-001LF](#) [65781-018](#) [65781-047](#)