

HSF

NOTES:

Current Rating: 3.0AMP
 Contact Resistance: 20mΩ Max
 Withstand Voltage: 1000V AC/DC
 Insulation Resistance: 1000MΩ Min
 Operation Temperature: -40°C to +105°C
 Contact Material: Phosphor Bronze
 Contact plating: Au Or Sn over Ni
 Insulator Material: PA9T+30%GF UL94V-0

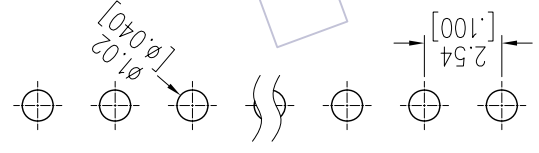
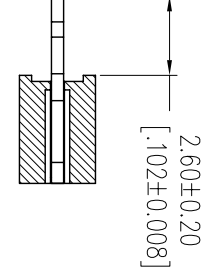
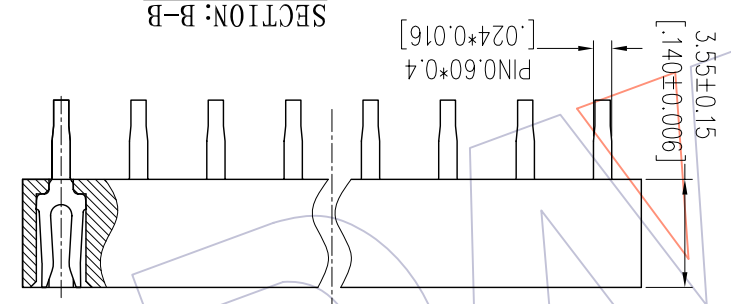
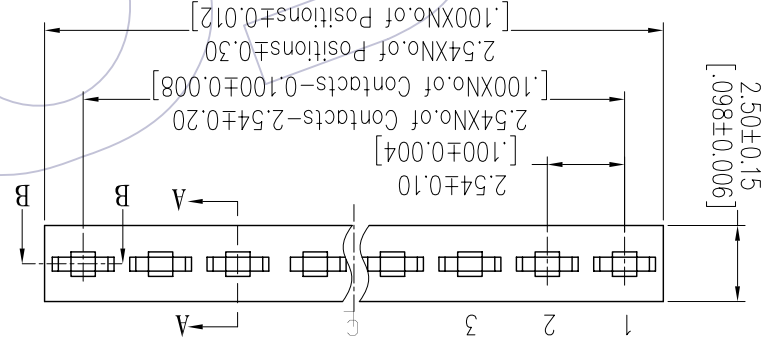
Ordering Information

2135T-1XXSXXXYNT1

No. of Pins per ROW: 02-40PIN
 Contact Plating: G0=Gold Flash
 Insulator: A=BT
 Packing: C=PA9T
 T=Tube

G3=10μ"Gold
 G4=15μ"Gold
 G5=30μ"Gold
 S0=Gold Flash/Tin
 S3=10μ"Gold/Tin
 S4=15μ"Gold/Tin
 S5=30μ"Gold/Tin
 SN=Tim
 SM=Matte Tin

Item	Pitch	Standard	Alternate
Mating	2.54	1115/1120/1125	



Recommended P.C.B Layout (Top Side)
 (PCB BOARD TOLERANCE ±0.05)

REV	DATE	MODIFICATION DESCRIPTION	CHANGE	DIM	TOL	OPERATION	DRAW	DATE	SCALE	FIT	PART NO.
A0	2012/08/02	NEW		Angle	±.3	APPROVE	DATE	DATE	SHEET	PROJ.	Customer NO.
				X.XXX	±0.15	CHECK	DATE	DATE	SIZE		
				X.XX	±0.25		DATE	DATE	A4		
				X.X	±0.40		DATE	DATE	mm		
							DATE	DATE	UNIT		
							DATE	DATE	SCALE <td></td> <td></td>		

DATE: 2012/08/02
 DRAW: JYHuang
 CHECK: JYHuang
 APPROVE: JYHuang
 DATE: 2012/08/02
 SHEET: 1/1
 PROJ.:

UNIT: mm
 FIT: mm
 TTE: mm
 SIZE: A4
 H=3.5
 PH2.54 SINGLE ROW 180° DIP

Customer NO.:

WCN-Dongguan
 WCN-Kunshan
 Tel: +86 769 85358920
 Fax: +86 512 57468408
 E-mail: sdies@wcon.com

WCN
 Http: www.wcon.com

X-ON Electronics

Largest Supplier of Electrical and Electronic Components

Click to view similar products for [Headers & Wire Housings](#) category:

Click to view products by [Wcon](#) manufacturer:

Other Similar products are found below :

[95000-104TRLF](#) [10135584-644402LF](#) [DF62W-EP2022PCA](#) [95000-106TRLF](#) [DF62W-2022SCA](#) [DF62W-EP2022PC](#) [2203348](#) [DF62W-2022SC](#) [1084018](#) [1029039](#) [1084017](#) [802-10-012-10-002000](#) [1112640](#) [1112639](#) [891-007-9SS-BST1T](#) [000-34000](#) [0008550134](#) [0009482033](#) [0009507031](#) [57102-F02-18ULF](#) [57102-S06-03LF](#) [57202-S52-04LF](#) [PCN6-15S-2.5E](#) [0039019024](#) [58102-G61-06LF](#) [582553-1](#) [0009485154](#) [0009508121](#) [0022285053](#) [0050291907](#) [018731A](#) [LY20-4P-DT1-P1E-BR](#) [02.125.8002.8](#) [60101931](#) [60598-1 \(Cut Strip\)](#) [M1625-3R/100](#) [61062-3](#) [61082-181009](#) [CSU011177004](#) [636-1427](#) [638009-1](#) [641938-9](#) [641991-4](#) [644168-1](#) [644827-2](#) [647662-1](#) [65039-019ELF](#) [65692-001LF](#) [65781-018](#) [65781-047](#)