

**HSP**

NOTES:

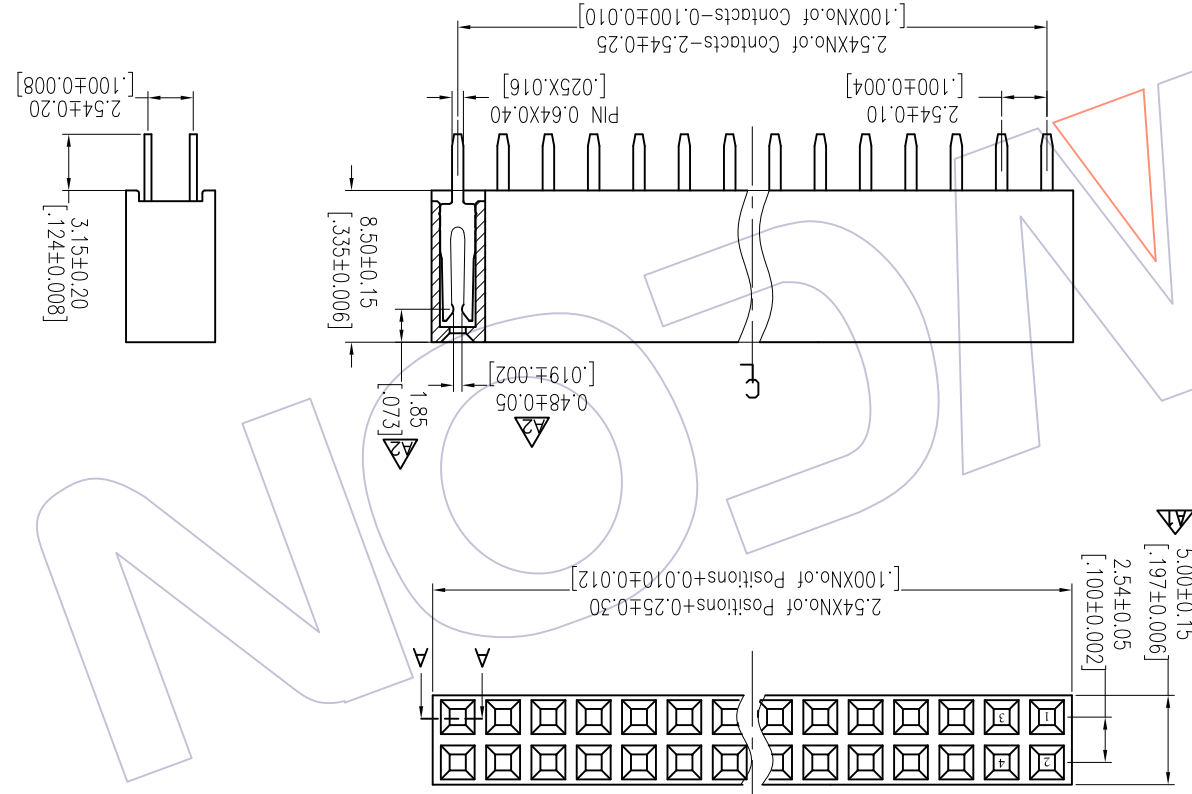
Current Rating: 3.0AMP  
 Contact Resistance: 20mΩ Max  
 Withstand Voltage: 1000V AC/DC  
 Insulation Resistance: 1000MΩ Min  
 Operation Temperature: -40°C to +105°C  
 Contact Material: Phosphor Bronze or Brass  
 Contact plating: Au Or Sn over Ni  
 Insulator Material: PA9T+30%G.F UL94V-0  
 Or PBT+30%G.F UL94V-0

# Ordering Information

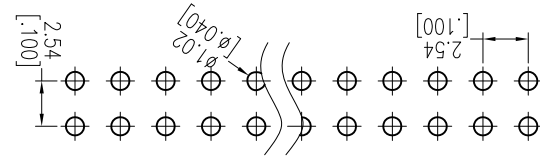
2185-2XXSXXXYNA1

No. of Pins per ROW: 02-40PIN  
 Contact Plating: Insulator : PA9T  
 A=PBT T=Tube  
 G0=Gold Flash G=Gold  
 C=PA9T A=Tray  
 G3=10μ"Gold  
 G4=15μ"Gold  
 G5=30μ"Gold  
 S0=Gold Flash/Tin  
 S3=10μ"Gold/Tin  
 S4=15μ"Gold/Tin  
 S5=30μ"Gold/Tin  
 SN=Tin  
 SM=Matte Tin

Item	Pitch	Standard	Alternate
Mating	2.54	1115/1120/1125	

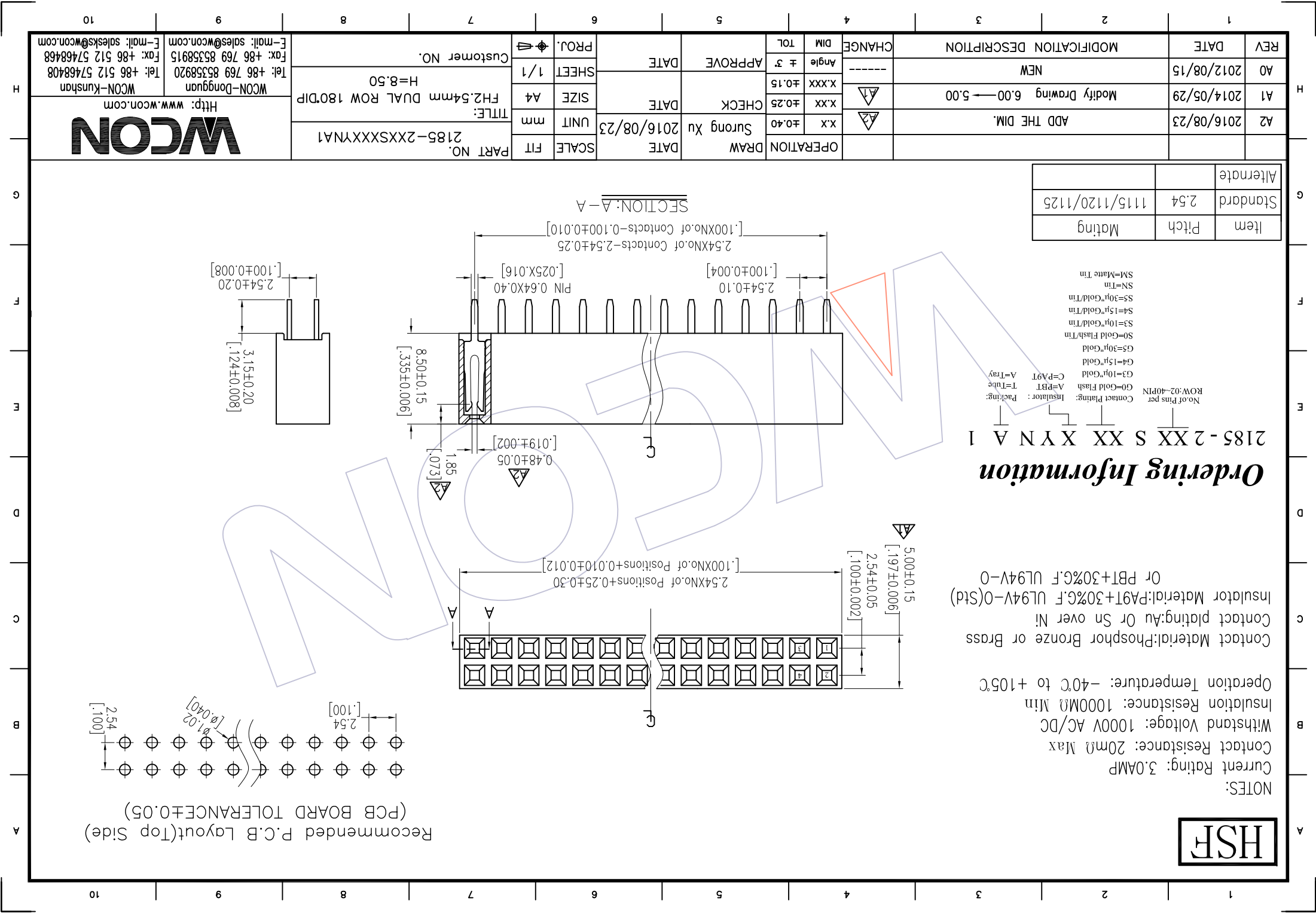


Recommended P.C.B Layout(Top Side)  
 (PCB BOARD TOLERANCE±0.05)



REV	DATE	MODIFICATION DESCRIPTION	CHANGE	DIM		OPERATION	DRAW	DATE	SCALE	FIT	PART NO.	TITLE:		DATE	CHECK	DATE	APPROVE	DATE	PROJ.	Customer NO.	WCON-Dongguan		
				Angle	TOL							mm	mm								WCON-Kunshan	WCON-Dongguan	
A2	2016/08/23	ADD THE DIM.	△2	X.X	±0.40		Surong Xu	2016/08/23			2185-2XXSXXXYNA1	FH2.54mm DUAL ROW 180DIP	H=8.50									Tel: +86 769 85358920	Tel: +86 512 57468408
A1	2014/05/29	Modify Drawing 6.00 → 5.00	△1	X.XX	±0.25																	Fax: +86 769 85358915	Fax: +86 512 57468468
A0	2012/08/15	NEW	---	X.XXX	±0.15																	E-mail: sdies@wcon.com	E-mail: sdiesks@wcon.com

**WCON**  
 Http://www.wcon.com



## X-ON Electronics

Largest Supplier of Electrical and Electronic Components

*Click to view similar products for [Headers & Wire Housings](#) category:*

*Click to view products by [Wcon](#) manufacturer:*

Other Similar products are found below :

[95000-104TRLF](#) [10135584-644402LF](#) [DF62W-EP2022PCA](#) [95000-106TRLF](#) [DF62W-2022SCA](#) [DF62W-EP2022PC](#) [2203348](#) [DF62W-2022SC](#) [1084018](#) [1029039](#) [1084017](#) [802-10-012-10-002000](#) [1112640](#) [1112639](#) [891-007-9SS-BST1T](#) [000-34000](#) [0008550134](#) [0009482033](#) [0009507031](#) [57102-F02-18ULF](#) [57102-S06-03LF](#) [57202-S52-04LF](#) [PCN6-15S-2.5E](#) [0039019024](#) [58102-G61-06LF](#) [582553-1](#) [0009485154](#) [0009508121](#) [0022285053](#) [0050291907](#) [018731A](#) [LY20-4P-DT1-P1E-BR](#) [02.125.8002.8](#) [60101931](#) [60598-1 \(Cut Strip\)](#) [M1625-3R/100](#) [61062-3](#) [61082-181009](#) [CSU011177004](#) [636-1427](#) [638009-1](#) [641938-9](#) [641991-4](#) [644168-1](#) [644827-2](#) [647662-1](#) [65039-019ELF](#) [65692-001LF](#) [65781-018](#) [65781-047](#)