



NOTES:

Current Rating: 2.0AMP

Contact Resistance: 20mΩ Max

Withstand Voltage: 500V AC/DC

Insulation Resistance: 1000MΩ Min

Operation Temperature: -40°C to +105°C

Contact Material: Phosphor Bronze

Contact plating: Au over Ni

Insulator Material: PA9T+33%GF UL94V-0

### Ordering Information

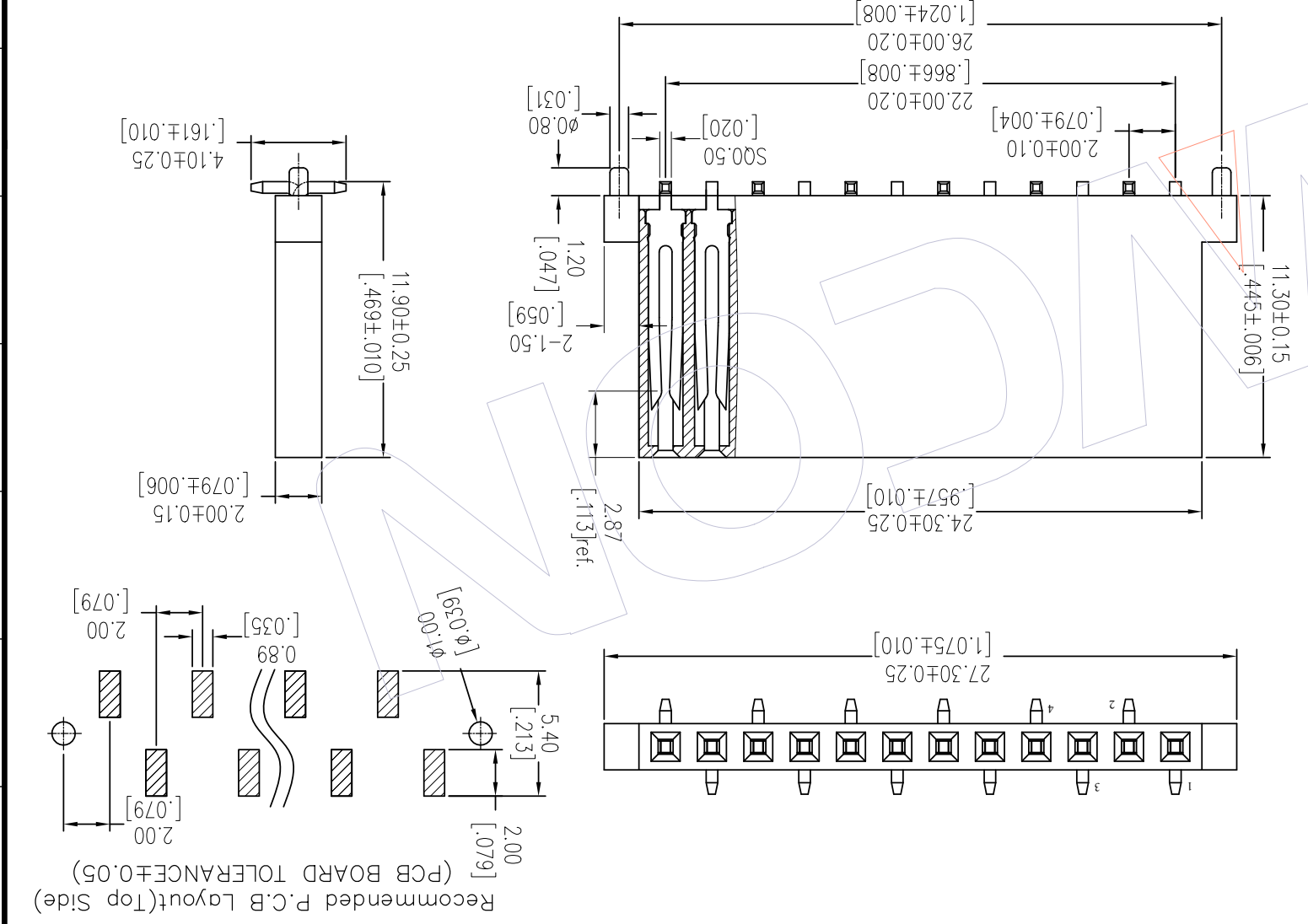
2211-112 M G0 CYN R 4

No. of Pins per ROW: 12PIN

Contact Plating: G0=Gold Flash

R=Tape&Reel

Packaging:



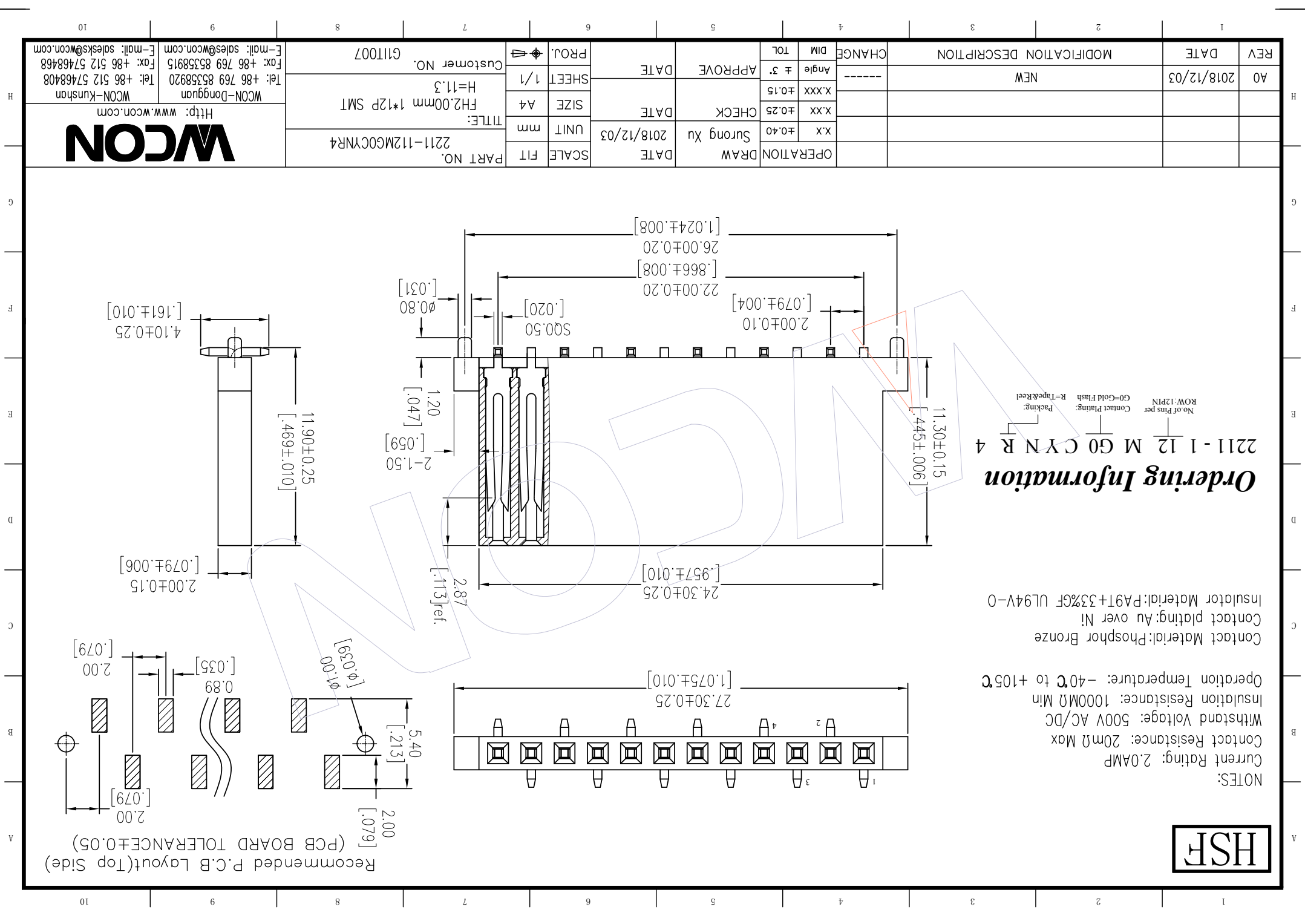
Recommended P.C.B Layout(Top Side)  
(PCB BOARD TOLERANCE±0.05)

REV	DATE	MODIFICATION DESCRIPTION	CHANGE	DIM	TOL	APPROVE	DATE	PROJ.	CUSTOMER NO.	OPERATION	DRAW	DATE	SCALE	FIT	UNIT	TITLE	SIZE	SHEET	PROJ.
A0	2018/12/03	NEW	---	Angle	±.3	APPROVE	DATE	SHEET	Customer NO.	OPERATION	Surong Xu	2018/12/03	SCALE	FIT	mm	2211-112M G0 CYN R4	A4	1/1	
				X.XXX	±0.15	CHECK	DATE	SIZE	FH2.00mm 1*12P SMT	OPERATION		DATE	SCALE	FIT	mm		A4		
				X.XX	±0.25				H=11.3	OPERATION		DATE	SCALE	FIT	mm				
				X.X	±0.40				WCON-Dongguan	OPERATION		DATE	SCALE	FIT	mm				



Http://www.wcon.com

WCON-Kunshan  
Tel: +86 512 57468408  
WCON-Dongguan  
Tel: +86 769 85358920  
WCON.com  
Fax: +86 769 85358915  
E-mail: sales@wcon.com  
E-mail: sales@wcon.com  
E-mail: sales@wcon.com



## X-ON Electronics

Largest Supplier of Electrical and Electronic Components

*Click to view similar products for [Headers & Wire Housings](#) category:*

*Click to view products by [Wcon](#) manufacturer:*

Other Similar products are found below :

[95000-104TRLF](#) [10135584-644402LF](#) [DF62W-EP2022PCA](#) [95000-106TRLF](#) [DF62W-2022SCA](#) [DF62W-EP2022PC](#) [2203348](#) [DF62W-2022SC](#) [1084018](#) [1029039](#) [1084017](#) [802-10-012-10-002000](#) [1112640](#) [1112639](#) [891-007-9SS-BST1T](#) [000-34000](#) [0008550134](#) [0009482033](#) [0009507031](#) [57102-F02-18ULF](#) [57102-S06-03LF](#) [57202-S52-04LF](#) [PCN6-15S-2.5E](#) [0039019024](#) [58102-G61-06LF](#) [582553-1](#) [0009485154](#) [0009508121](#) [0022285053](#) [0050291907](#) [018731A](#) [LY20-4P-DT1-P1E-BR](#) [02.125.8002.8](#) [60101931](#) [60598-1 \(Cut Strip\)](#) [M1625-3R/100](#) [61062-3](#) [61082-181009](#) [CSU011177004](#) [636-1427](#) [638009-1](#) [641938-9](#) [641991-4](#) [644168-1](#) [644827-2](#) [647662-1](#) [65039-019ELF](#) [65692-001LF](#) [65781-018](#) [65781-047](#)