

**HSF**

NOTES:  
 Current Rating: 2.0AMP  
 Contact Resistance: 20mΩ Max  
 Withstand Voltage: 500V AC/DC  
 Insulation Resistance: 1000MΩ Min  
 Operation Temperature: -40°C to +125°C(Au)  
 -40°C to +105°C(Sn)  
 Contact Material: Phosphor Bronze  
 Contact plating: Au Or Sn over Ni  
 Insulator Material: LCP+30%GF UL94V-0

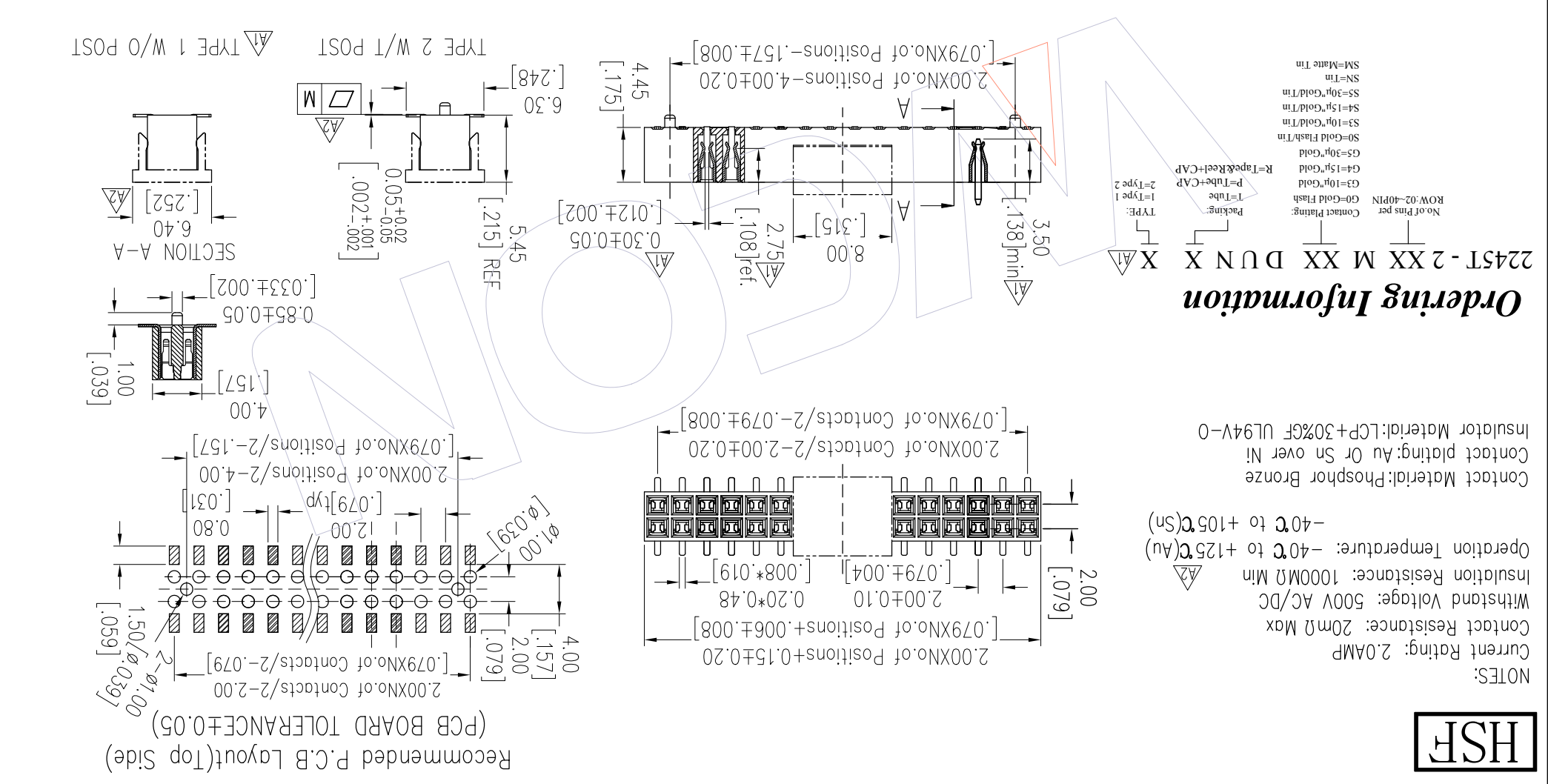
**Ordering Information**

2245T-2XXMXXDUNX  
 No. of Pins per ROW: 02-40PIN  
 Contact Plating: G0=Gold Flash  
 P=Tube+CAP  
 G4=15μ"Gold  
 R=Tape&Reel+CAP  
 G5=30μ"Gold  
 S0=Gold Flash/Tm  
 S3=10μ"Gold/Tm  
 S4=15μ"Gold/Tm  
 S5=30μ"Gold/Tm  
 SN=Tm  
 SM=Mate Tm

Item	Pitch	Mating
Standard	2.00	1215/1220
Alternate		

REV	DATE	MODIFICATION DESCRIPTION	CHANGE	DIM TOL	APPROVE	DATE	PROJ.	Customer NO.
A2	2019/11/11	Modify Drawing	A2	X.X ±0.40	Surong Xu	2019/11/11	SCALE	PART NO. 2245T-2XXMXXDUNXX
A1	2018/04/03	ADD TYPE 1;ADD DIM.	A1	X.XX ±0.25	CHECK	DATE	SIZE	TITLE: FH2.00 Dual Row Top Enter H=4.45
A0	2012/07/17	NEW	---	X.XXX ±0.15	APPROVE	DATE	SHEET	WCON-Dongguan Tel: +86 769 85358920 Fax: +86 769 85358915 WCON-Kunshan Tel: +86 512 57468408 Fax: +86 512 57468468 E-mail: sales@wcon.com

Part No.	Pin	Pitch	Length
2245T-2XXMXXDUNX1	2-15P	16-25P	26-40P
2245T-2XXMXXDUNX2	M	0.10	0.18



Recommended P.C.B Layout(Top Side)  
 (PCB BOARD TOLERANCE±0.05)

## X-ON Electronics

Largest Supplier of Electrical and Electronic Components

*Click to view similar products for [Headers & Wire Housings](#) category:*

*Click to view products by [Wcon](#) manufacturer:*

Other Similar products are found below :

[95000-104TRLF](#) [10135584-644402LF](#) [DF62W-EP2022PCA](#) [95000-106TRLF](#) [DF62W-2022SCA](#) [DF62W-EP2022PC](#) [2203348](#) [DF62W-2022SC](#) [1084018](#) [1029039](#) [1084017](#) [802-10-012-10-002000](#) [1112640](#) [1112639](#) [891-007-9SS-BST1T](#) [000-34000](#) [0008550134](#) [0009482033](#) [0009507031](#) [57102-F02-18ULF](#) [57102-S06-03LF](#) [57202-S52-04LF](#) [PCN6-15S-2.5E](#) [0039019024](#) [58102-G61-06LF](#) [582553-1](#) [0009485154](#) [0009508121](#) [0022285053](#) [0050291907](#) [018731A](#) [LY20-4P-DT1-P1E-BR](#) [02.125.8002.8](#) [60101931](#) [60598-1 \(Cut Strip\)](#) [M1625-3R/100](#) [61062-3](#) [61082-181009](#) [CSU011177004](#) [636-1427](#) [638009-1](#) [641938-9](#) [641991-4](#) [644168-1](#) [644827-2](#) [647662-1](#) [65039-019ELF](#) [65692-001LF](#) [65781-018](#) [65781-047](#)