

# HSF

Recommended P.C.B Layout(Top Side)  
(PCB BOARD TOLERANCE±0.05)

**NOTES:**

Current Rating: 2.0AMP  
 Contact Resistance: 20mΩ Max  
 Withstand Voltage: 500V AC/DC  
 Insulation Resistance: 1000MΩ Min  
 Operation Temperature: -40℃ to +105℃

Contact Material: Phosphor Bronze  
 Contact plating: Au Or Sn over Ni  
 Insulator Material: LCP+30%G.F UL94V-0

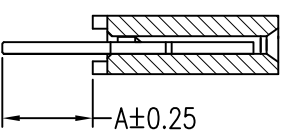
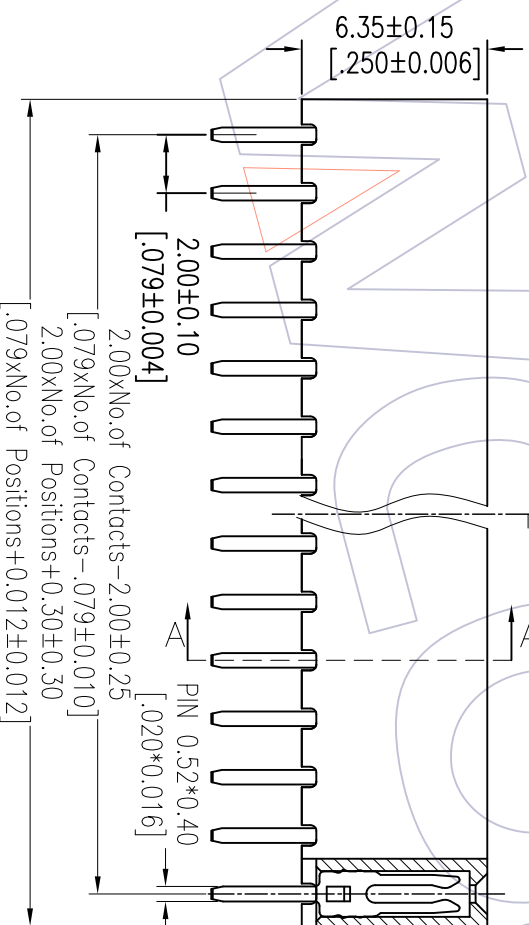
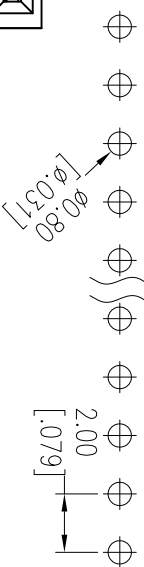
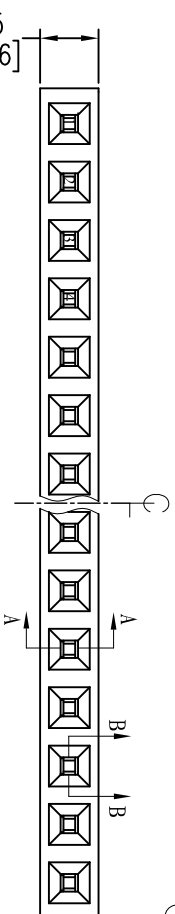


## Ordering Information

2263 - 1 XX S XX D Y N T X

No of Pins per ROW=02~40PIN  
 Contact Plating: GP=Gold Flash G3=10μm Gold G4=15μm Gold G5=30μm Gold  
 Insulator: D=LCP T=Tube  
 Packing: S0=Gold Flash/Tin S3=10μm Gold/Tin S4=15μm Gold/Tin S5=30μm Gold/Tin SN=Tin SM=Mate Tin

Item	Pitch	DIM A	Mating
Standard	2.00	3.1/2.4	1215/1220
Alternate			



SECTION B-B

SECTION A-A

REV	DATE	MODIFICATION DESCRIPTION	CHANGE	OPERATION	DRAW	DATE	SCALE	FIT	PART NO.
A2	2013/03/15	Modify drawing	---	XX	Wang	2013/03/15	mm		2263-1XXXXDYNTX
A1	2012/11/07	Modificat the table: DIM A 3.10--3.1/2.4	---	X,XX	CHECK	DATE	SIZE		TITLE: FH2.00mm SINGLE ROW 180° DIP
A0	2012/07/23	NEW	---	X,XXX	±0.15	DATE	SHEET	1/1	H=6.35
REV	DATE	MODIFICATION DESCRIPTION	CHANGE	Angle	APPROVE	DATE	PROJ.		Customer NO.
				DIM	TOL				

# WCON

Http: www.wcon.com

WCON-Dongguan  
 Tel: +86 769 85358920  
 Fax: +86 769 85358915  
 E-mail: sales@wcon.com

WCON-Kunshan  
 Tel: +86 512 57468408  
 Fax: +86 512 57468468  
 E-mail: sales@wcon.com

## X-ON Electronics

Largest Supplier of Electrical and Electronic Components

*Click to view similar products for [Headers & Wire Housings](#) category:*

*Click to view products by [Wcon](#) manufacturer:*

Other Similar products are found below :

[57102-F02-18ULF](#) [58102-G61-06LF](#) [0009485154](#) [009176003701906](#) [0050291907](#) [02.125.8002.8](#) [609-3404](#) [61062-3](#) [622-0430](#) [622-3653LF](#)  
[63453-116](#) [636-1030](#) [636-1427](#) [636-3427](#) [636-4007](#) [641938-9](#) [644827-2](#) [65495-038](#) [65692-001LF](#) [65781-018](#) [65781-047](#) [65817-010LF](#)  
[65817-015LF](#) [66207-023LF](#) [67016-026LF](#) [67095-007LF](#) [68631-112](#) [68645-018](#) [68648-049](#) [699319-000](#) [70.362.1628.0](#) [70-4210](#) [70-4226B](#)  
[70-4853B](#) [707-5020](#) [707-5028](#) [71.350.2428.0](#) [71961-016LF](#) [733-134](#) [754199-000](#) [760-3052](#) [787-8014-00](#) [FCN-367T-T012/H](#) [80.063.4001.1](#)  
[800-90-001-10-001000](#) [800-90-010-10-002000](#) [801-43-002-10-013000](#) [801-43-006-10-002000](#) [803-41-018-10-001000](#) [803-43-014-20-](#)  
[001000](#)