

HSP

NOTES:

Current Rating: 3.0AMP
 Contact Resistance: 20mΩ Max
 Withstand Voltage: 1000V AC/DC
 Insulation Resistance: 1000MΩ Min
 Operation Temperature: -40°C to +105°C

Contact Material: Brass
 Contact plating: Au Or Sn over Ni
 Insulator Material: PBT Or PA9T+30%GF UL94V-0

06P-18P Without Slot "A" and "B"
 20P-58P Without Slot "A", with Slot "B"
 60P-64P With Slot "A" and "B"

Ordering Information

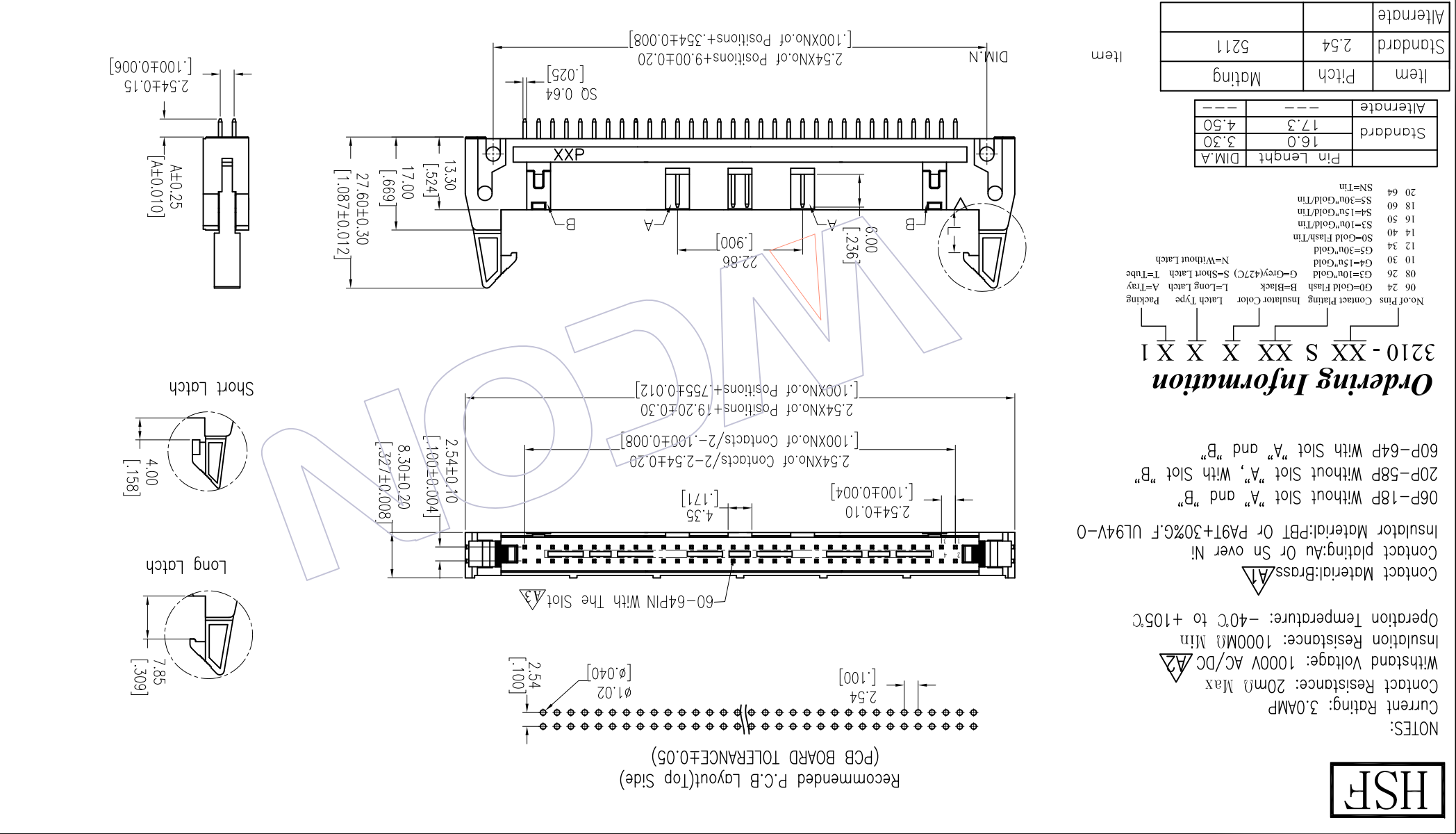
3210-XX S XX X X X 1

No. of Pins Contact Pinning Insulator Color Latch Type Packing
 06 24 G0=Gold Flash B=Black L=Long Latch A=Tray
 08 26 G3=10u"Gold G=Grey(42°C) S=Short Latch T=Tube
 10 30 G4=15u"Gold N=Without Latch
 12 34 G5=30u"Gold
 14 40 S0=Gold Flash/Tin
 16 50 S3=10u"Gold/Tin
 18 60 S4=15u"Gold/Tin
 20 64 S5=30u"Gold/Tin
 SN=Tin

Item	Pitch	Mating
Standard	2.54	5211
Alternate	---	---

Item	Pitch	Mating
Standard	2.54	5211
Alternate	---	---

REV	DATE	MODIFICATION DESCRIPTION	CHANGE	DIM	TOL	APPROVE	DATE	PROJ.	CUSTOMER NO.	WCON-Donguan	WCON-Kunshan
A3	2014/12/03	MODIFY	△3	X.X	±0.40	Allen	2014/12/03	SCALE	PART NO. 3210-XXXXXXX1	WCON-Donguan	WCON-Kunshan
A2	2013/02/25	MODIFY	△2	X.XX	±0.25	CHECK	DATE	SIZE	TITLE:	WCON-Donguan	WCON-Kunshan
A1	2012/12/19	MODIFY THE MATERIAL	△1	X.XXX	±0.15	CHECK	DATE	SIZE	TITLE:	WCON-Donguan	WCON-Kunshan
A0	2012/12/06	NEW	---	Angle	±.3	APPROVE	DATE	SHEET	Customer NO.	WCON-Donguan	WCON-Kunshan



Recommended P.C.B Layout(Top Side)
 (P.C.B BOARD TOLERANCE±0.05)

WCON
 Http://www.wcon.com

WCON-Donguan
 WCON-Kunshan
 Tel: +86 769 85358920
 Tel: +86 512 57468408
 Fax: +86 769 85358915
 Fax: +86 512 57468468
 E-mail: sdies@wcon.com
 E-mail: sdiesks@wcon.com

X-ON Electronics

Largest Supplier of Electrical and Electronic Components

Click to view similar products for [wcon](#) manufacturer:

Other Similar products are found below :

[2185-140SG0AYNT1](#) [1125-1206G0S155C002](#) [2263-205SG0DYNT6](#) [2185-207ZG0CYNT1](#) [2157-140SG0CYNT1](#) [1125-2212G0S280C001](#)
[WF2543-1H03B01](#) [WF2543-1H04B01](#) [1220-1210G0M087P1](#) [WF2543-1H07B01](#) [2185DN1-205SG0CYNT1](#) [3622-S040-027G1R02](#) [2263-222RG0DYNT1](#) [1215-2114G0S076C002](#) [1325-1208G0Z093CT01](#) [1125-2208G0S360C001](#) [2220T-206MS0CUNT2](#) [3622-P040-038G1R02](#)
[WF1501-WM09ER1](#) [1125-1206G0M113CR01](#) [WF2005-2H09W01](#) [6223-09FMNS0B02](#) [6212-26FHS0B01](#) [3220-20SW0BST1](#) [WF2005-WR02ET2](#) [2185DN2-106SG0CYNT1](#) [2185-240SG0AYNT1](#) [2111P-232SG0FYNT4](#) [3111-20MSNBK00R1](#) [1125-2205G0S210C001](#) [2185-208SS0CYNT1](#) [2159-213RG0CUNT1](#) [2263D-204SG0DYNT6](#) [2185-209SS1CYNT2](#) [2211-112MG0CYNR4](#) [2227T-204MG3CUNR1](#) [2185-210SG0CYNR1](#) [6212-26MHS0B01](#) [3610-S020-040G1R01](#) [WF3001-2WR03BA1](#) [WF1001A-WZ06ET1](#) [6321D-040SDS1PNT01](#) [2185-208SSNCYNT1](#) [6320D-040RDS1PNT01](#) [WF2547-2H06B01](#) [2135-207MH3CUNR3](#) [2243-211WG0CUNT2](#) [2185-104ZG0CYNR1](#) [2272-209RG0CUNT1](#) [WF2549-2WS10S0B01](#)