



**NOTES:**

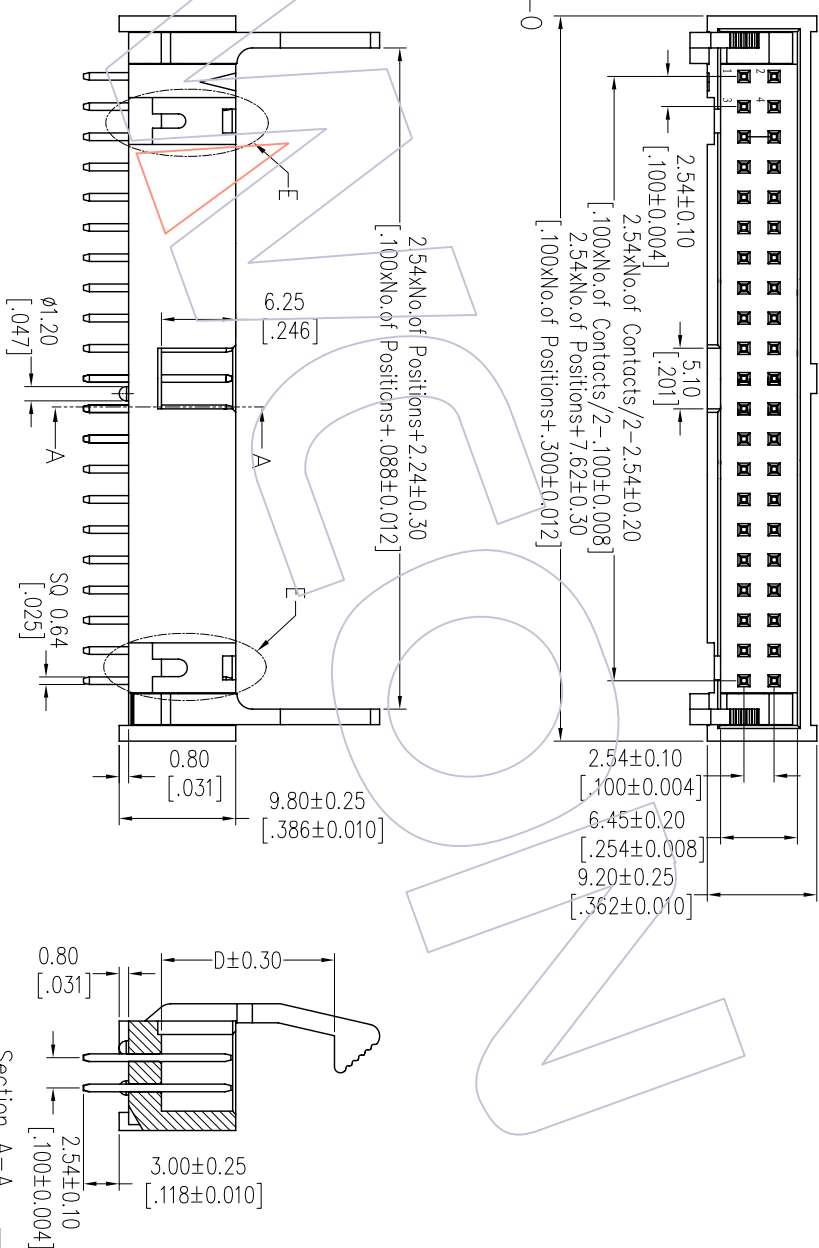
- Current Rating: 3.0AMP
- Contact Resistance: 20mΩ Max
- Withstand Voltage: 1000V AC/DC
- Insulation Resistance: 1000MΩ Min
- Operation Temperature: -40°C to +105°C
- Contact Material: Brass
- Contact plating: Au Or Sn over Ni
- Latch Material: Zinc Alloy
- Latch plating: Ni
- Insulator Material: PBT or PA9T+30%G.F UL94V-0
- Above 20 Poles With "E" Profile.

# Ordering Information

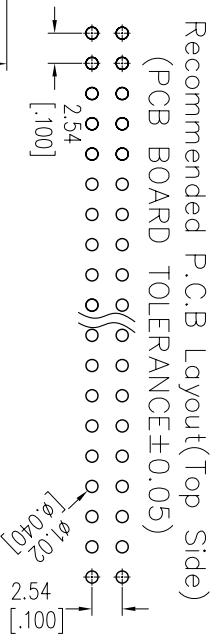
3211 - XX S XX B X X 1

- No. of Pins    Contact Plating    Insulator Color    Latch Type    Packing
- 06 26    G=Gold Flash    B=Black    L=Long Latch    A=Tray
- 08 30    G3=10u"Gold    U=Blue    S=Short Latch    T=Tube
- 10 34    G4=15u"Gold    G=Grey(427C)
- 14 40    G5=30u"Gold    E=Grey(413C)
- 16 50    S0=Gold Flash/Tin
- 20 60    S3=10u"Gold/Tin
- 40    S4=15u"Gold/Tin
- 64    S5=30u"Gold/Tin
- SN=Tin

Item	Pitch	Mating
Standard	2.54	5212/5211
Alternate		



Section A-A



Dimension and thickness list

PART NO	D
3211-XXSXXBLX1	14.55
3211-XXSXXBSX1	10.65

REV	DATE	MODIFICATION DESCRIPTION	CHANGE
A0	2012/10/08	NEW	

OPERATION	DRAW	DATE	SCALE	FIT	PART NO.
XX	JYhuang	2012/10/08	±0.40	mm	SBE TAB
XX	CHECK	DATE	±0.25	A4	TITLE:
XX	APPROVE	DATE	±0.15	1/1	2.54 EJECTOR HEADER 180° METAL LATCH
Angle			± 3'	PROJ.	Customer NO.



WCON-Dongguan    Http: www.wcon.com  
 WCON-Kunshan

Tel: +86 769 85358920    Tel: +86 512 57468408  
 Fax: +86 769 85358915    Fax: +86 512 57468468  
 E-mail: sales@wcon.com    E-mail: sales@wcon.com

## X-ON Electronics

Largest Supplier of Electrical and Electronic Components

*Click to view similar products for [I/O Connectors](#) category:*

*Click to view products by [Wcon](#) manufacturer:*

Other Similar products are found below :

[571763P](#) [61-168618-12P](#) [D20419-211](#) [72.250.1628.2](#) [72.250.2428.2](#) [76.350.0729.0](#) [76871-1403](#) [PCR-E36PM](#) [PCS-XE26LKA](#) [PCS-XES68MS+](#) [G38A71314B](#) [9776-18-6](#) [1571250010](#) [157-22500-3](#) [MS3471L14-19P L/C](#) [192991-0703](#) [91-644626-35P](#) [172501-6002](#) [FCN-260C008-A/L0](#) [FCN-260C024-AL0](#) [FCN-261Z008](#) [2000314-1](#) [200331-1](#) [PCS-E28FS+](#) [PCS-XE26SLFD+](#) [PCS-XE26SLFDT+](#) [G730VID08BDC24](#) [HDMR-29-01-S-SM-TR](#) [HDRA-E68W1LFDTC-SL+](#) [54182-0605](#) [UE86K842720321](#) [38113800006](#) [DP3AR020WQ1R200](#) [Z4.102.0680.0](#) [500-1040](#) [500-1052](#) [500-1054](#) [ZP-4008-66L](#) [10-565995-597N](#) [10-584459-12P](#) [5554841-1](#) [SM3106F14S-7S-LC](#) [SM3106R18-18S](#) [U90B3054061110](#) [U65-E04-4020](#) [ZPF000000000097891](#) [557-262M2-06C](#) [PCS-96LFD+](#) [60-042222-02S](#) [10099439-003C-TRLF](#)