

HSF

NOTES:

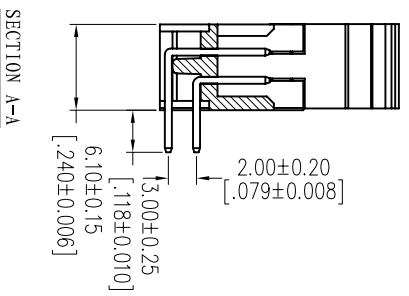
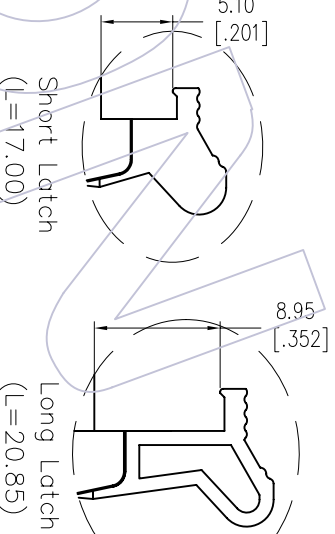
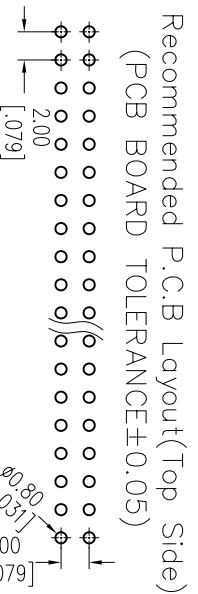
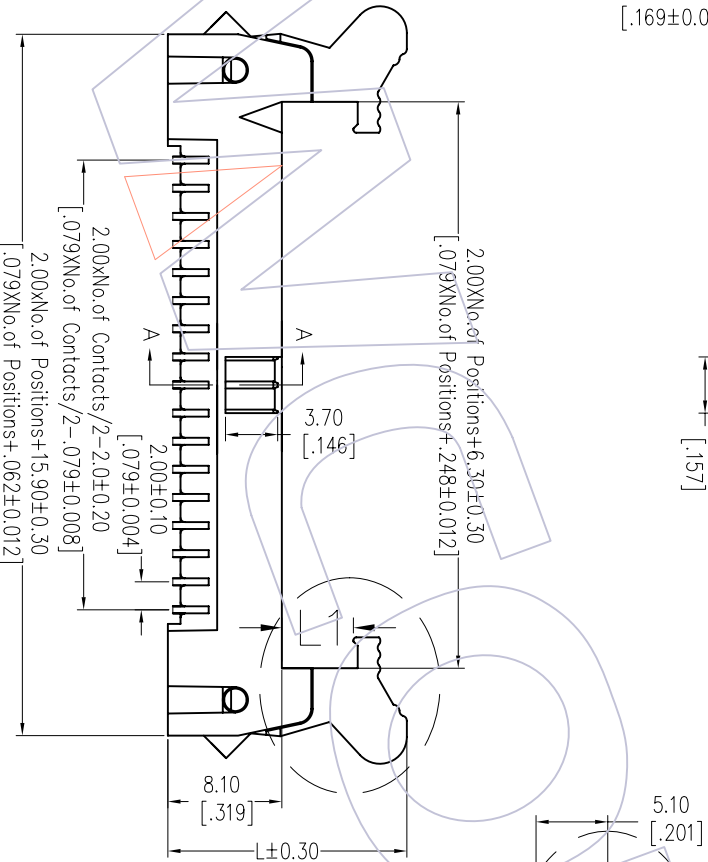
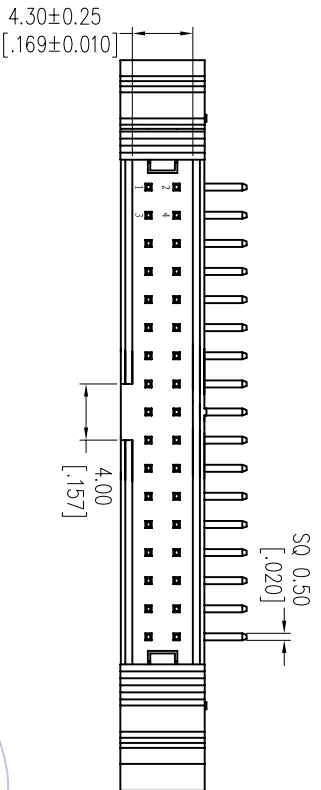
- Current Rating: 2.0AMP
- Contact Resistance: 20mΩ Max
- Withstand Voltage: 500V AC/DC
- Insulation Resistance: 1000MΩ Min
- Operation Temperature: -40°C to +105°C
- Contact Material: Brass
- Contact plating: Au Or Sn over Ni
- Insulator Material: PA9T+30%G.F. UL94V-0

Ordering Information

3220 - XX R XX B X X 1

No. of Pins	Contact Plating	Insulator Color	Latch type	Packaging
08 30	G0=Gold Flash	B=Black	L=Long Latch	T=Tube
10 34	G3=10u"Gold	U=Blue	S=Short Latch	
14 40	G4=15u"Gold	G=Grey(427C)		
16 44	G5=30u"Gold	E=Grey(413C)		
20 50	S0=Gold Flash/Tin			
24 60	S3=10u"Gold/Tin			
26 64	S4=15u"Gold/Tin			
68	S5=30u"Gold/Tin			
	SN=Tin			

Item	Pitch	Mating
Standard	2.00	5222
Alternate		



REV	DATE	MODIFICATION DESCRIPTION	CHANGE
A0	2012/10/06	NEW	

OPERATION	DRAW	DATE	SCALE	FIT
XX ±0.40	JYHuog	2012/10/06	mm	1/1
X.XX ±0.25	CHECK	DATE	SIZE	A4
X.XXX ±0.15			SHEET	1/1
Angle	APPROVE	DATE	PROJ.	
± 3'				

PART NO.	TITLE:
3220-XXXXXXBX1	2.00 EJECTOR HEADER 90°
Customer NO.	

WCON

Http: www.wcon.com

WCON-Dongguan Tel: +86 769 85358920 Fax: +86 769 85358915 E-mail: sales@wcon.com

WCON-Kunshan Tel: +86 512 57468408 Fax: +86 512 57468468 E-mail: sales@wcon.com

X-ON Electronics

Largest Supplier of Electrical and Electronic Components

Click to view similar products for [I/O Connectors](#) category:

Click to view products by [Wcon](#) manufacturer:

Other Similar products are found below :

[571763P](#) [61-168618-12P](#) [D20419-211](#) [72.250.1628.2](#) [72.250.2428.2](#) [76.350.0729.0](#) [76871-1403](#) [PCR-E36PM](#) [PCS-XE26LKA](#) [PCS-XES68MS+](#) [G38A71314B](#) [9776-18-6](#) [1571250010](#) [157-22500-3](#) [MS3471L14-19P L/C](#) [192991-0703](#) [91-644626-35P](#) [172501-6002](#) [FCN-260C008-A/L0](#) [FCN-260C024-AL0](#) [FCN-261Z008](#) [2000314-1](#) [200331-1](#) [PCS-E28FS+](#) [PCS-XE26SLFD+](#) [PCS-XE26SLFDT+](#) [G730VID08BDC24](#) [HDMR-29-01-S-SM-TR](#) [HDRA-E68W1LFDTC-SL+](#) [54182-0605](#) [UE86K842720321](#) [38113800006](#) [DP3AR020WQ1R200](#) [Z4.102.0680.0](#) [500-1040](#) [500-1052](#) [500-1054](#) [ZP-4008-66L](#) [10-565995-597N](#) [10-584459-12P](#) [5554841-1](#) [SM3106F14S-7S-LC](#) [SM3106R18-18S](#) [U90B3054061110](#) [U65-E04-4020](#) [ZPF000000000097891](#) [557-262M2-06C](#) [PCS-96LFD+](#) [60-042222-02S](#) [10099439-003C-TRLF](#)