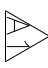


HSF

NOTES:

Current Rating: 2.0AMP
 Contact Resistance: 20mΩ Max
 Withstand Voltage: 500V AC/DC
 Insulation Resistance: 1000MΩ Min
 Operation Temperature: -40°C to +105°C

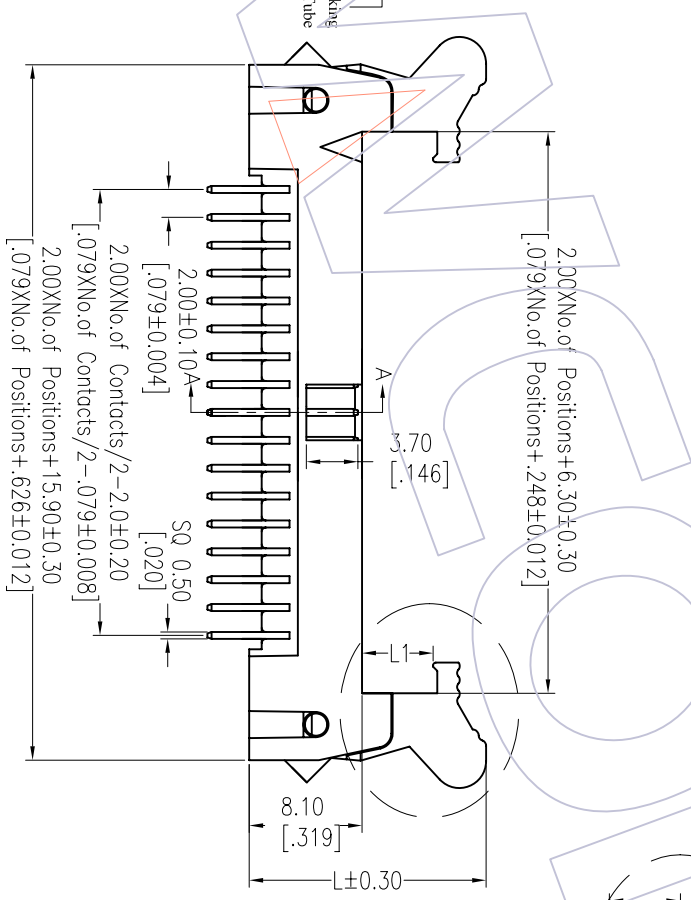
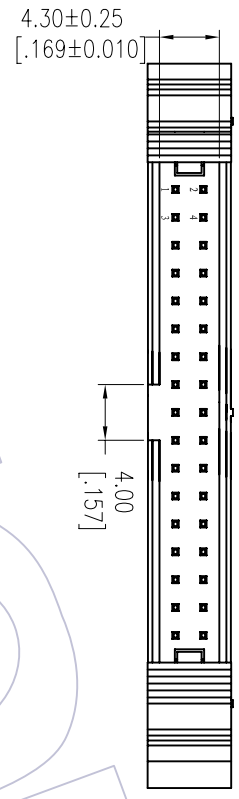
Contact Material: Brass 
 Contact plating: Au Or Sn over Ni
 Insulator Material: PA9T+30%G.F. UL94V-0

Ordering Information

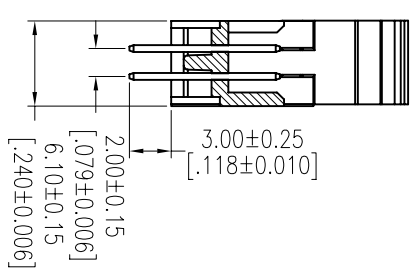
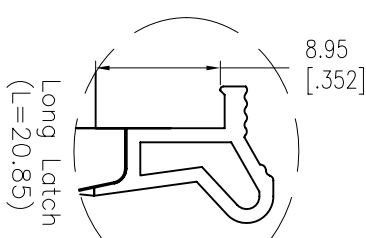
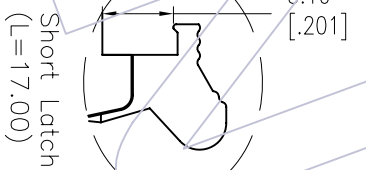
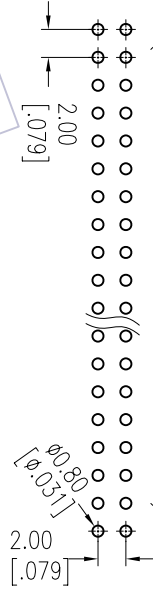
3220 - XX S XX B X X 1

- | | | | | |
|-------------|-------------------|-----------------|---------------|---------|
| No. of Pins | Contact Plating | Insulator Color | Latch type | Packing |
| 08 30 | GG=Gold Flash | B=Black | L=Long Latch | T=Tube |
| 10 34 | G3=10" Gold | U=Blue | S=Short Latch | |
| 14 40 | G4=15" Gold | G=Grey(427C) | | |
| 16 44 | G5=30" Gold | F=Grey(413C) | | |
| 20 50 | S0=Gold Flash/Tin | | | |
| 24 60 | S3=10" Gold/Tin | | | |
| 26 64 | S4=15" Gold/Tin | | | |
| 68 | S5=30" Gold/Tin | | | |
| | SN=Tin | | | |

Item	Pitch	Mating
Standard	2.00	5222
Alternate		



Recommended P.C.B Layout(Top Side)
 (PCB BOARD TOLERANCE±0.05)



OPERATION		DRAW		DATE		SCALE		PART NO.	
XX	±0.40	JYHuang		2012/12/24	mm	3220-XXXXXXBX1		TITLE: 2.00 EJECTOR HEADER 180°	
A1	±0.25	CHECK		DATE	A4			Customer NO.	
A0	±0.15	Angle	APPROVE	DATE	SHEET			WCON-Dongguan	
REV	DATE	MODIFICATION DESCRIPTION	CHANGE	DATE	PROJ.			WCON-Kunshan	

WCON

Http: www.wcon.com

WCON-Dongguan	WCON-Kunshan
Tel: +86 769 85358920	Tel: +86 512 57468408
Fax: +86 769 85358915	Fax: +86 512 57468468
E-mail: sales@wcon.com	E-mail: sales@wcon.com

X-ON Electronics

Largest Supplier of Electrical and Electronic Components

Click to view similar products for [wcon](#) manufacturer:

Other Similar products are found below :

[2185-140SG0AYNT1](#) [1125-1206G0S155C002](#) [2263-205SG0DYNT6](#) [2185-207ZG0CYNT1](#) [2157-140SG0CYNT1](#) [1125-2212G0S280C001](#)
[WF2543-1H03B01](#) [WF2543-1H04B01](#) [1220-1210G0M087P1](#) [WF2543-1H07B01](#) [2185DN1-205SG0CYNT1](#) [3622-S040-027G1R02](#) [2263-222RG0DYNT1](#) [1215-2114G0S076C002](#) [1325-1208G0Z093CT01](#) [1125-2208G0S360C001](#) [2220T-206MS0CUNT2](#) [3622-P040-038G1R02](#)
[WF1501-WM09ER1](#) [1125-1206G0M113CR01](#) [WF2005-2H09W01](#) [6223-09FMNS0B02](#) [6212-26FHS0B01](#) [3220-20SW0BST1](#) [WF2005-WR02ET2](#) [2185DN2-106SG0CYNT1](#) [2185-240SG0AYNT1](#) [2111P-232SG0FYNT4](#) [3111-20MSNBK00R1](#) [1125-2205G0S210C001](#) [2185-208SS0CYNT1](#) [2159-213RG0CUNT1](#) [2263D-204SG0DYNT6](#) [2185-209SS1CYNT2](#) [2211-112MG0CYNR4](#) [2227T-204MG3CUNR1](#) [2185-210SG0CYNR1](#) [6212-26MHS0B01](#) [3610-S020-040G1R01](#) [WF3001-2WR03BA1](#) [WF1001A-WZ06ET1](#) [6321D-040SDS1PNT01](#) [2185-208SSNCYNT1](#) [6320D-040RDS1PNT01](#) [WF2547-2H06B01](#) [2135-207MH3CUNR3](#) [2243-211WG0CUNT2](#) [2185-104ZG0CYNR1](#) [2272-209RG0CUNT1](#) [WF2549-2WS10S0B01](#)