



NOTES:

Current Rating: 2.0AMP
Contact Resistance: 20mΩ Max
Withstand Voltage: 1000V AC/DC
Insulation Resistance: 1000MΩ Min
Operation Temperature: -40°C to +105°C

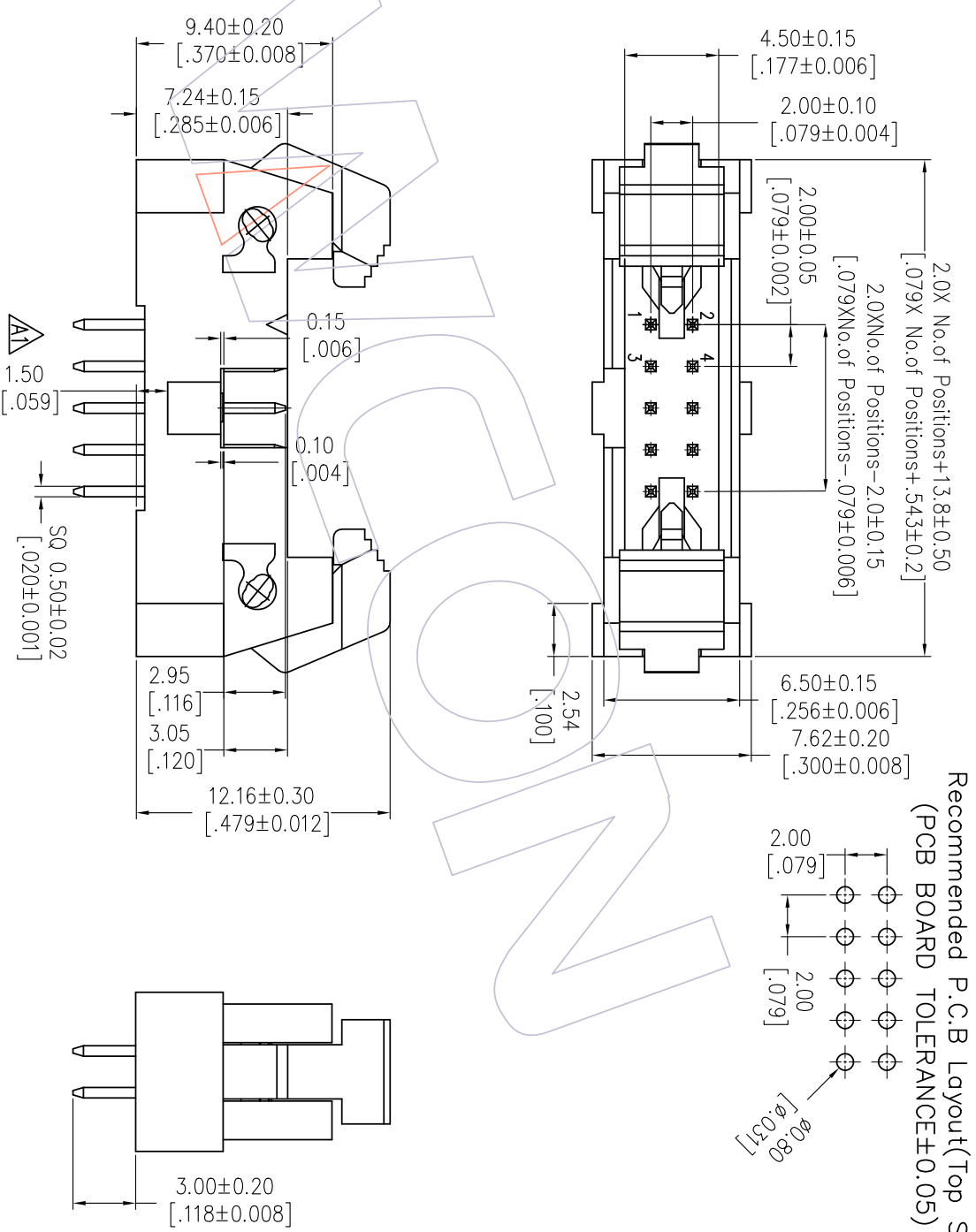
Contact Material: Brass
Contact plating: Au Or Sn over Ni
Insulator Material: LCP+30%G.F UL94V-0

Ordering Information

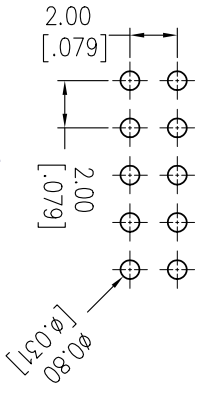
3221-XX S XX B S T 1

- No. of Pins
- Contact Plating
- Insulator Color
- Packing
- 06 30 G0=Gold Flash B=Black A=Tray
- 08 34 G3=10u"Gold T=Tube
- 10 40 G4=15u"Gold
- 14 44 G5=30u"Gold
- 16 50 S0=Gold Flash/Tin
- 20 60 S3=10u"Gold/Tin
- 24 64 S4=15u"Gold/Tin
- 26 S5=30u"Gold/Tin
- SN=Tin

Item	Pitch	Mating
Standard	2.00	5225
Alternate		



Recommended P.C.B Layout(Top Side)
(PCB BOARD TOLERANCE±0.05)



REV	DATE	MODIFICATION DESCRIPTION	CHANGE	OPERATION	DRAW	DATE	SCALE	FIT	PART NO.	TITLE:	
A1	2020/05/14	Modify Bump Add 1.50mm	DuYing	XX ±0.40	DuYing	2020/05/14	mm	A4	3221-XXSXXBST1	2.0 Ejector Header "S" Type 180°	
A0	2012/10/08	NEW	JYHuang	X.XXX ±0.15	CHECK	DATE	SHEET 1/1		Customer NO.	WCON-Dongguan	
				Angle ± 3°	APPROVE	DATE	PROJ.			WCON-Kunshan	
				TOL						Http: www.wcon.com	
										Tel: +86 769 85358920 Fax: +86 769 85358915 E-mail: sales@wcon.com	
										Tel: +86 512 57468408 Fax: +86 512 57468468 E-mail: sales@wcon.com	



X-ON Electronics

Largest Supplier of Electrical and Electronic Components

Click to view similar products for [wcon](#) manufacturer:

Other Similar products are found below :

[2185-140SG0AYNT1](#) [1125-1206G0S155C002](#) [2263-205SG0DYNT6](#) [2185-207ZG0CYNT1](#) [2157-140SG0CYNT1](#) [1125-2212G0S280C001](#)
[WF2543-1H03B01](#) [WF2543-1H04B01](#) [1220-1210G0M087P1](#) [WF2543-1H07B01](#) [2185DN1-205SG0CYNT1](#) [3622-S040-027G1R02](#) [2263-222RG0DYNT1](#) [1215-2114G0S076C002](#) [1325-1208G0Z093CT01](#) [1125-2208G0S360C001](#) [2220T-206MS0CUNT2](#) [3622-P040-038G1R02](#)
[WF1501-WM09ER1](#) [1125-1206G0M113CR01](#) [WF2005-2H09W01](#) [6223-09FMNS0B02](#) [6212-26FHS0B01](#) [3220-20SW0BST1](#) [WF2005-WR02ET2](#) [2185DN2-106SG0CYNT1](#) [2185-240SG0AYNT1](#) [2111P-232SG0FYNT4](#) [3111-20MSNBK00R1](#) [1125-2205G0S210C001](#) [2185-208SS0CYNT1](#) [2159-213RG0CUNT1](#) [2263D-204SG0DYNT6](#) [2185-209SS1CYNT2](#) [2211-112MG0CYNR4](#) [2227T-204MG3CUNR1](#) [2185-210SG0CYNR1](#) [6212-26MHS0B01](#) [3610-S020-040G1R01](#) [WF3001-2WR03BA1](#) [WF1001A-WZ06ET1](#) [6321D-040SDS1PNT01](#) [2185-208SSNCYNT1](#) [6320D-040RDS1PNT01](#) [WF2547-2H06B01](#) [2135-207MH3CUNR3](#) [2243-211WG0CUNT2](#) [2185-104ZG0CYNR1](#) [2272-209RG0CUNT1](#) [WF2549-2WS10S0B01](#)