



NOTES:

Current Rating: 2.0AMP
 Contact Resistance: 20mΩ Max
 Withstand Voltage: 1000V AC/DC
 Insulation Resistance: 1000MΩ Min
 Operation Temperature: -40°C to +105°C

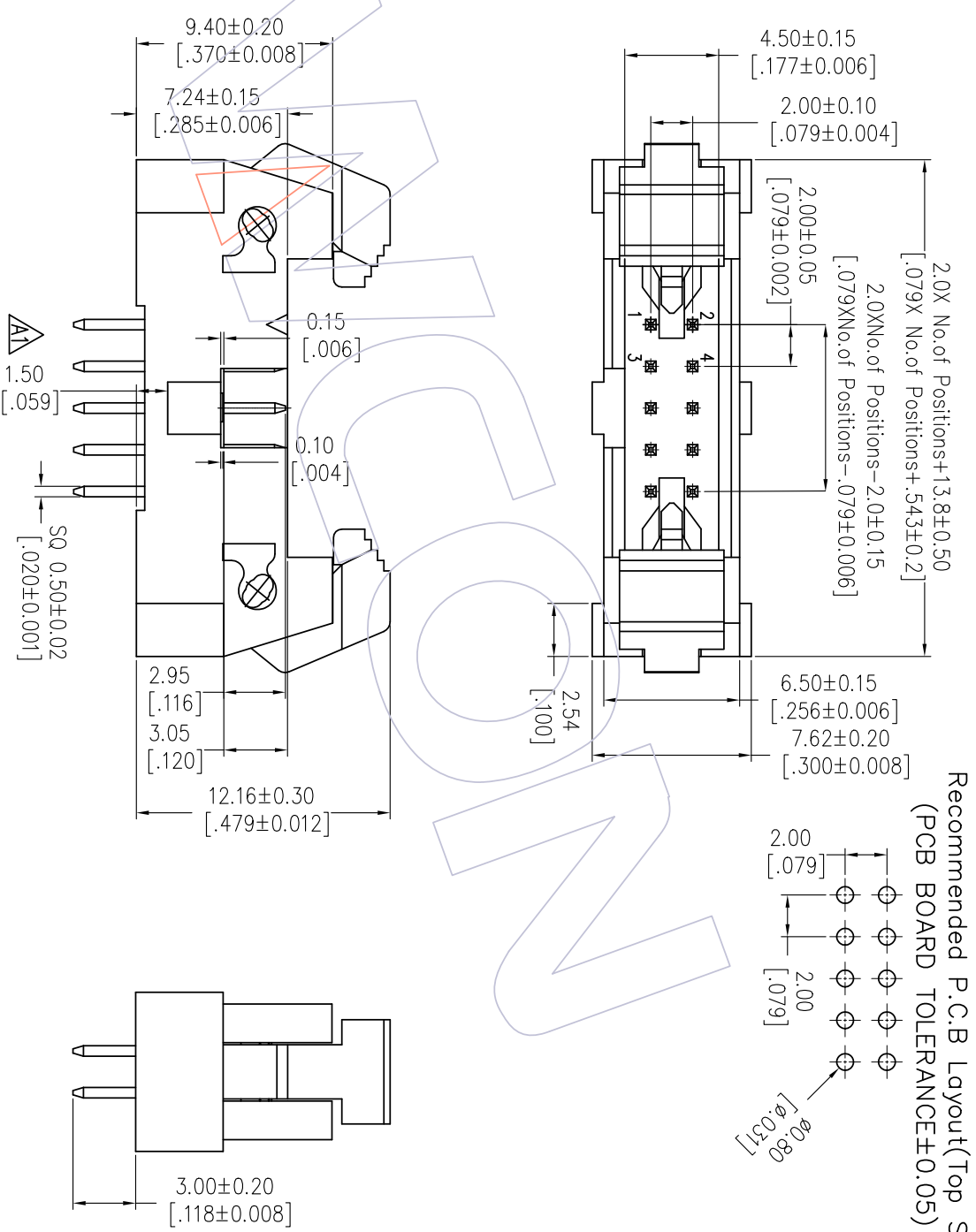
Contact Material: Brass
 Contact plating: Au Or Sn over Ni
 Insulator Material: LCP+30%G.F UL94V-0

Ordering Information

3221-XX S XX B S T 1

- No. of Pins Contact Plating Insulator Color Packing
- 06 30 G0=Gold Flash B=Black A=Tray
- 08 34 G3=10u"Gold T=Tube
- 10 40 G4=15u"Gold
- 14 44 G5=30u"Gold
- 16 50 S0=Gold Flash/Tin
- 20 60 S3=10u"Gold/Tin
- 24 64 S4=15u"Gold/Tin
- 26 S5=30u"Gold/Tin
- SN=Tin

| | | |
|-----------|-------|--------|
| Item | Pitch | Mating |
| Standard | 2.00 | 5225 |
| Alternate | | |



Recommended P.C.B Layout(Top Side)
 (PCB BOARD TOLERANCE±0.05)

| | | | | | | | | | | |
|-----|------------|--------------------------|---------|-----------|---------|------------|-------|-------|----------------------------------|--|
| REV | DATE | MODIFICATION DESCRIPTION | CHANGE | OPERATION | DRAW | DATE | SCALE | FIT | PART NO. | WCON Http: www.wcon.com WCON-Dongguan WCON-Kunshan Tel: +86 769 85358920 Tel: +86 512 57468408 Fax: +86 769 85358915 Fax: +86 512 57468468 E-mail: sales@wcon.com E-mail: sales@wcon.com |
| A1 | 2020/05/14 | Modify Bump Add 1.50mm | DuYing | XX | DuYing | 2020/05/14 | mm | A4 | 3221-XXSXXBST1 | |
| A0 | 2012/10/08 | NEW | JYHuang | X.XXX | CHECK | | | | 2.0 Ejector Header "S" Type 180° | |
| REV | DATE | MODIFICATION DESCRIPTION | CHANGE | DIW | APPROVE | DATE | SHEET | PROJ. | Customer NO. | |

X-ON Electronics

Largest Supplier of Electrical and Electronic Components

Click to view similar products for [I/O Connectors](#) category:

Click to view products by [Wcon](#) manufacturer:

Other Similar products are found below :

[571763P](#) [59811-0000](#) [61-168618-12P](#) [D20419-211](#) [D38999/20FJ24PA L/C](#) [76871-1403](#) [PCR-E36PM](#) [PCS-XE26LKA](#) [PCS-XES68MS+](#)
[G38A71314B](#) [DX40-50P\(55\)](#) [1571250010](#) [157-22500-3](#) [MS3471L14-19P L/C](#) [192991-0703](#) [FCN-260C008-A/L0](#) [FCN-260C024-AL0](#) [FCN-](#)
[261Z008](#) [2000314-1](#) [200331-1](#) [PCS-E28FS+](#) [PCS-XE26SLFD+](#) [PCS-XE26SLFDT+](#) [G730VID08BDC24](#) [HDR-E14MSG1+](#) [54182-0605](#)
[UE86K842720321](#) [38113800006](#) [DP3AR020WQ1R200](#) [DRA-26PC-F0R](#) [Z4.102.0680.0](#) [500-1040](#) [500-1052](#) [DX40-20P\(55\)](#) [5554841-1](#)
[SM3100F14S-12P](#) [U90B3054061110](#) [U65-E04-4020](#) [557-262M2-06C](#) [60-042222-02S](#) [10099439-003C-TRLF](#) [226-0348-000](#) [10137239-](#)
[0011LF](#) [70.060.1028.0](#) [109029-ZZ](#) [HDR-E26MG1+](#) [SO-0715-02-01-02](#) [GT1-DA04CST](#) [231-303](#) [MS3112E16-8SX](#)