

NOTES:

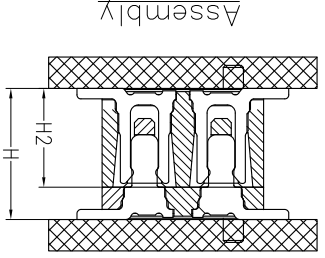
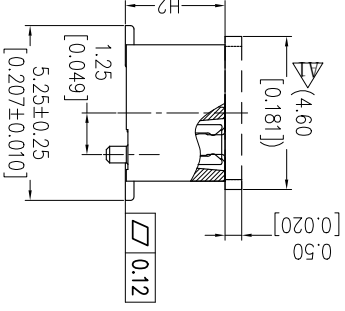
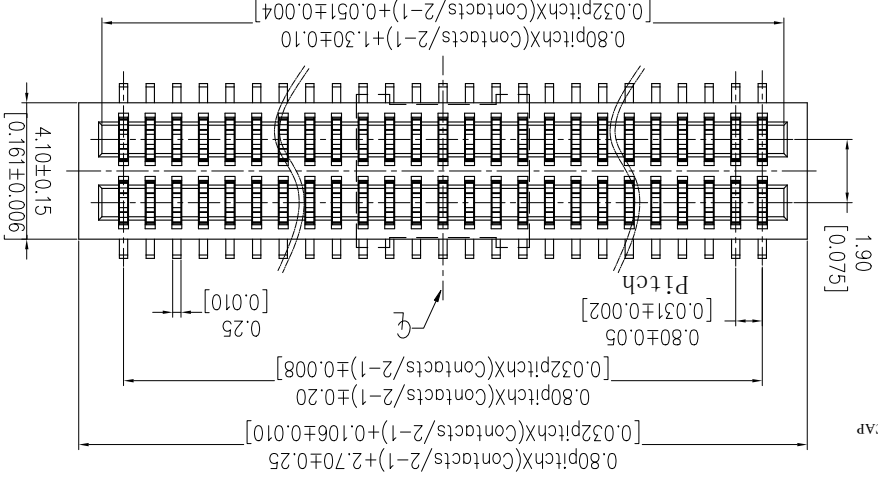
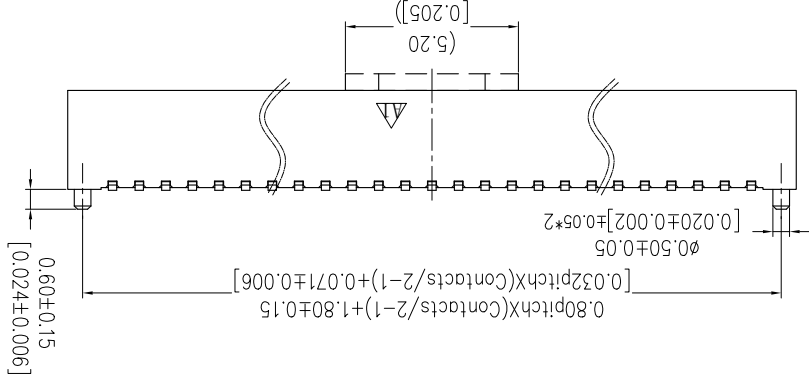
Current Rating: 0.5A
 Voltage Rating: 50V AC/DC
 Contact Resistance: 50millohm Max
 Insulation Resistance: 100Megohm Min
 Operation Temperature: -20°C to +105°C
 Housing Material: PA9T(UL94V-0)
 Cap Material: LCP(UL94V-0)
 Contact Material: Phosphor Bronze
 Contact plating: Au or Sn over Ni

Ordering Information

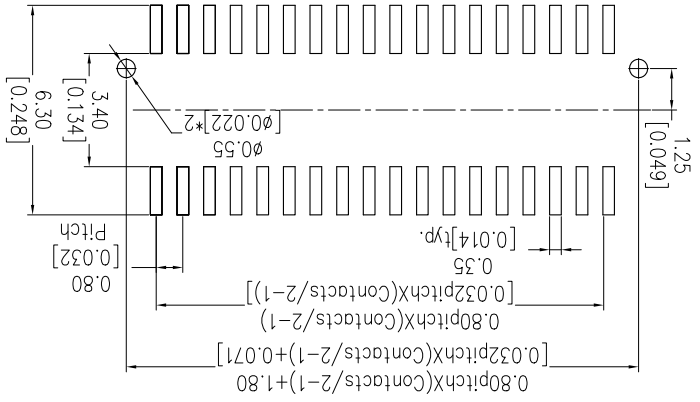
3610-S XXX - XXX XX R 01

No. of Pins
 Housing High
 Contact Plating
 T=Tube
 P=Tube+CAP
 R=apeReel+CAP
 10P
 20P
 30P
 40P
 50P
 80P
 100P
 G1=3u"Gold
 G2=5u"Gold
 G1=3u"Gold
 R=apeReel+CAP
 Housing High
 Contact Plating
 T=Tube
 P=Tube+CAP
 R=apeReel+CAP
 10P
 20P
 30P
 40P
 50P
 80P
 100P

ASS'Y HIGH(H)	PLUG(H1)	SOCKET(H2)
4.00	1.00	3.00
4.50	1.50	3.00
5.00	2.00	3.00
5.50	1.50	4.00
6.00	2.00	4.00
6.50	2.00	4.50
7.00	3.00	4.00
7.50	3.00	4.50
8.00	4.00	4.00



Recommended P. C. B Layout (Top Side)
 (PCB BOARD TOLERANCE ± 0.05)



REV	DATE	MODIFICATION DESCRIPTION	CHANGE	DIM TOL	APPROVE	DATE	SCALE	OPERATION
A0	2012/11/02	NEW	---	Angle ± 3°	APPROVE	DATE	SHEET 1/1	PROJ.
A1	2020/01/08	Modify	---	X.XXX ±0.15	CHECK	DATE	SIZE A4	PROJ.
			---	X.XX ±0.25	DRAW	DATE	UNIT inch	PROJ.
			---	X.X ±0.40		DATE	SCALE	PROJ.

PART NO.	TITLE:	Customer NO.
3610-SXXX-XXXXXR01	0.80mm B TO B FEMALE 180° SMT TYPE	

WCON-Dongguan	WCON-Kunshan
Tel: +86 769 85358920	Tel: +86 512 57468408
Fax: +86 769 85358915	Fax: +86 512 57468468
E-mail: sdies@wcon.com	E-mail: sdiesks@wcon.com

WCON
 Http://www.wcon.com

X-ON Electronics

Largest Supplier of Electrical and Electronic Components

Click to view similar products for [Headers & Wire Housings](#) category:

Click to view products by [Wcon](#) manufacturer:

Other Similar products are found below :

[95000-104TRLF](#) [10135584-644402LF](#) [DF62W-EP2022PCA](#) [95000-106TRLF](#) [DF62W-2022SCA](#) [DF62W-EP2022PC](#) [2203348](#) [DF62W-2022SC](#) [1084018](#) [1029039](#) [1084017](#) [802-10-012-10-002000](#) [1112640](#) [1112639](#) [891-007-9SS-BST1T](#) [000-34000](#) [0008550134](#) [0009482033](#) [0009507031](#) [57102-F02-18ULF](#) [57102-S06-03LF](#) [57202-S52-04LF](#) [PCN6-15S-2.5E](#) [0039019024](#) [58102-G61-06LF](#) [582553-1](#) [0009485154](#) [0009508121](#) [0022285053](#) [0050291907](#) [018731A](#) [LY20-4P-DT1-P1E-BR](#) [02.125.8002.8](#) [60101931](#) [60598-1 \(Cut Strip\)](#) [M1625-3R/100](#) [61062-3](#) [61082-181009](#) [CSU011177004](#) [636-1427](#) [638009-1](#) [641938-9](#) [641991-4](#) [644168-1](#) [644827-2](#) [647662-1](#) [65039-019ELF](#) [65692-001LF](#) [65781-018](#) [65781-047](#)