

# HSF

NOTE:

1.MATERIAL:

1.1 INSULATOR: LCP+30%G.F, UL94V-0; BLACK.

1.2 CAP: LCP+30%G.F, UL94V-0; BLACK.

1.3 CONTACT: PHOSPHOR BRONZE.

1.4 MOUNTING EAR: PHOSPHOR BRONZE.

2.FINISH:

2.1 CONTACT: 3u" OR 5u" MIN. GOLD PLATED IN CONTACT AREA

$\Delta 3 \geq 80u$ " MIN. TIN PLATED IN SOLDER AREA

    50u" MIN. NICKEL UNDERPLATED OVERALL.

2.2 MOUNTING EAR: 100u" MIN. TIN PLATED OVER

    50u" MIN. NICKEL UNDERPLATED OVERALL.

3.ELECTRICAL CHARACTERISTICS

3.1 CURRENT RATING: 0.5A.

3.2 CONTACT RESISTANCE: 65m $\Omega$  MAX.

3.3 INSULATION RESISTANCE: 1000M $\Omega$  MIN DC500V.

3.4 DIELECTRIC WITHSTANDING VOLTAGE: 250V AC PER MINUTE.

3.5 OPERATING TEMPERATURE: -40°C ~ +105°C.

3.6 OPERATING: 100 CYCLES MIN.

3.7 INSERTION FORCE: 90g MAX. Per PIN Pair.

3.8 WITHDRAWAL FORCE: 10g MIN. Per PIN Pair.

3.9 CONTACT RETENTION FORCE: 250g MIN. PER CONTACT

3.10 STORAGE TEMPERATURE: -10°C ~ +40°C.

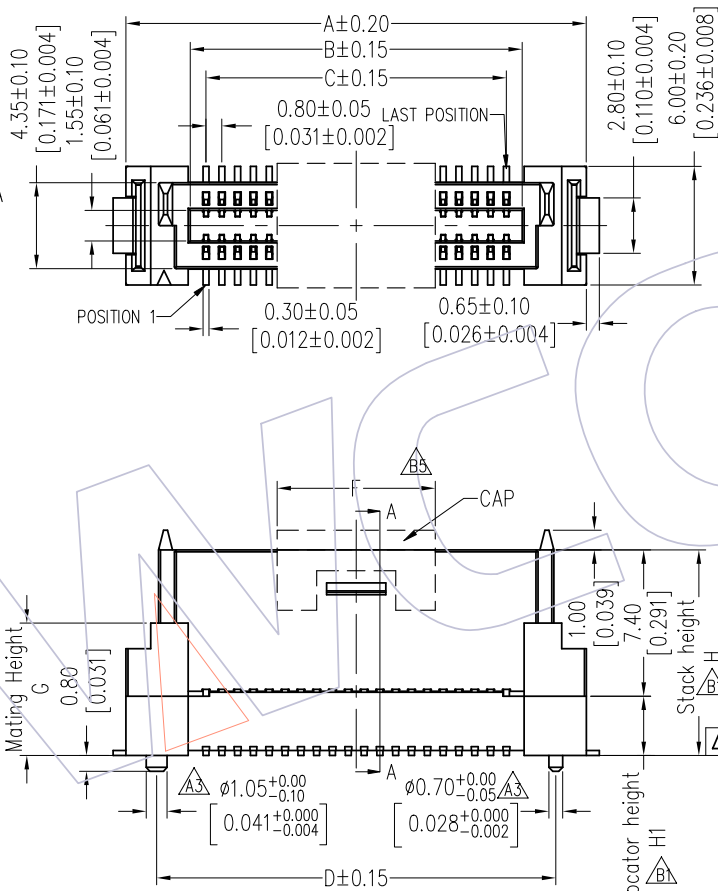
Flatness: <80Pins The "M" Is 0.10mm MAX

$\Delta 3 \geq 80$ Pins The "M" Is 0.15mm MAX

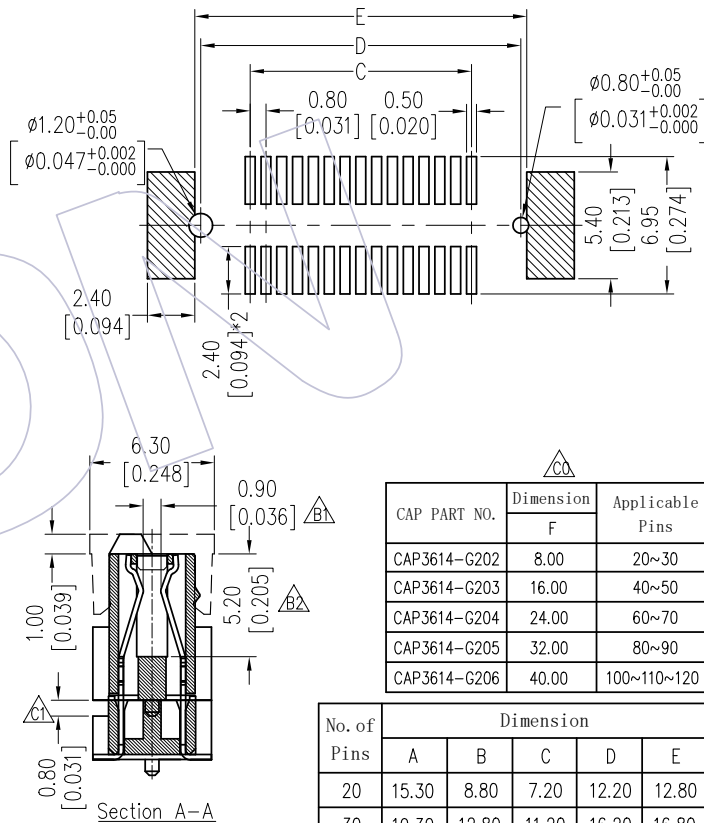
## Ordering Information

3614- S XXX - XXX XX R 01

No. of Pins    High "H"    Contact Plating    Packing  
 S1=3u"Gold/Tin    R=Tape&Reel+CAP  
 S2=5u"Gold/Tin



Recommended P.C.B Layout(Top Side)  
 (PCB BOARD TOLERANCE±0.05)



CAP PART NO.	Dimension		Applicable Pins
	F		
CAP3614-G202	8.00	20~30	
CAP3614-G203	16.00	40~50	
CAP3614-G204	24.00	60~70	
CAP3614-G205	32.00	80~90	
CAP3614-G206	40.00	100~110~120	

No. of Pins	Dimension				
	A	B	C	D	E
20	15.30	8.80	7.20	12.20	12.80
30	19.30	12.80	11.20	16.20	16.80
40	23.30	16.80	15.20	20.20	20.80
50	27.30	20.80	19.20	24.20	24.80
60	31.30	24.80	23.20	28.20	28.80
80	39.30	32.80	31.20	36.20	36.80
100	47.30	40.80	39.20	44.20	44.80
120	55.30	48.80	47.20	52.20	52.80
160	71.30	64.80	63.20	68.20	68.80

Dim H	Dim G	Dim H1
7.40	4.00	---
10.40	7.00	3.00
11.40	8.00	4.00
12.40	9.00	5.00
13.40	10.00	6.00

REV	DATE	MODIFICATION DESCRIPTION	CHANGE	OPERATION	DRAW	DATE	SCALE	FIT	PART NO.
C1	2018/05/24	Modify	$\Delta 1$	OPERATION	Ding	2018/05/24	SCALE	FIT	3614-SXXX-XXXXXR01
C0	2017/02/14	ADD CAP	$\Delta 2$	x.X    ±0.40	CHECK	DATE	UNIT	mm	TITLE:
B5	2016/10/12	更改CAP的长度	$\Delta 5$	x.XX    ±0.25			SIZE	A4	0.80mm BTB FEMALE "D" TYPE
A0	2010/03/09	NEW	---	x.XXX    ±0.15	APPROVE	DATE	SHEET	1/1	180° SMT
				Angle    ± 3'			PROJ.	$\Phi$	Customer NO.
				DIM    TOL					

# WCON

Http: www.wcon.com

WCON-Dongguan    WCON-Kunshan  
 Tel: +86 769 85358920    Tel: +86 512 57468408  
 Fax: +86 769 85358915    Fax: +86 512 57468468  
 E-mail: sales@wcon.com    E-mail: salesks@wcon.com

## X-ON Electronics

Largest Supplier of Electrical and Electronic Components

*Click to view similar products for [Board to Board & Mezzanine Connectors](#) category:*

*Click to view products by [Wcon](#) manufacturer:*

Other Similar products are found below :

[589158040000018](#) [MDF7C-18P-2.54DSA\(55\)](#) [FCN-268F036-G/BD](#) [FCN-268M012-G/0D](#) [FCN-268M024-G/1D](#) [FCN-723J004/1](#) [MIS-048-01-F-D-DP-K](#) [832-10-034-10-001000](#) [FX4C-80S-1.27DSA](#) [93696-330](#) [224393](#) [FCN-235D050-G/C](#) [210-93-314-41-105000](#) [2-22603-0](#) [MDF7-40DP-2.54DSA\(55\)](#) [5031084030](#) [MIT-114-03-F-D-K](#) [55323-1519](#) [45970-4130](#) [YFT-20-05-H-03-SB-K](#) [503308-3040](#) [026-6203-PDB](#) [027-6203-PDB](#) [069159702701000](#) [101A10019X](#) [105061100000861+](#) [55650-0588-C](#) [75140-7012](#) [87471-650](#) [YTW-30-07-H-Q-410-140](#) [YTT-112-01-H-Q](#) [063209](#) [0717420006](#) [FCN-268F024-G0D](#) [10124054-515LF](#) [68685-603](#) [8-1616154-3](#) [MIS-019-01-F-D](#) [YTQ-11201HQ](#) [IL-WX-10PB-HF-B-E1000E](#) [YFT-50-05-H-10-SB-K](#) [FCN-268M024-G/3D](#) [MDF7-16DP-2.54DSA\(55\)](#) [AXE810124](#) [FCN-214J100-G/0](#) [FCN-230C068-E/S](#) [AXE812124](#) [74220-001](#) [354184](#) [P50-028-DDS-TG](#)