

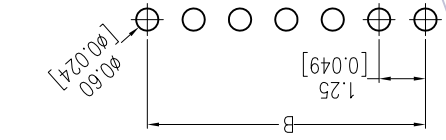
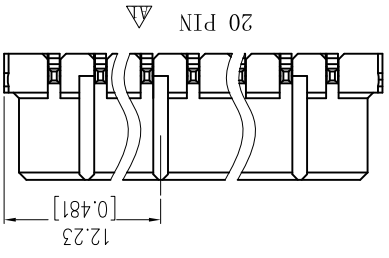
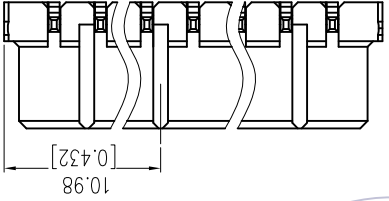
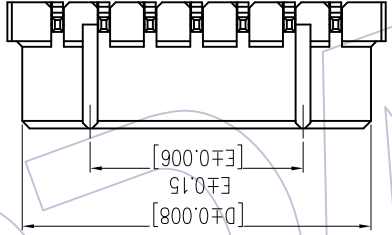
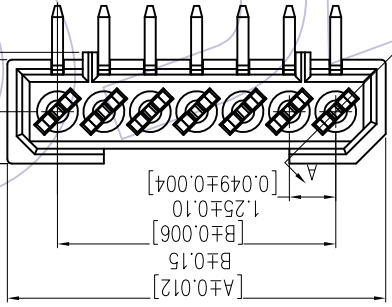
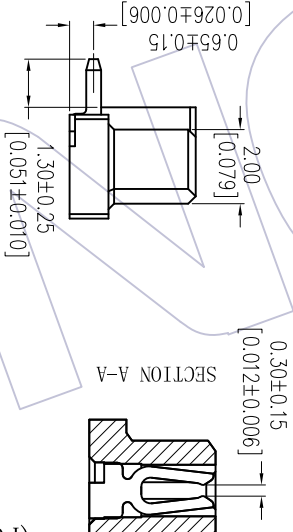
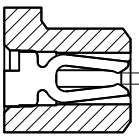
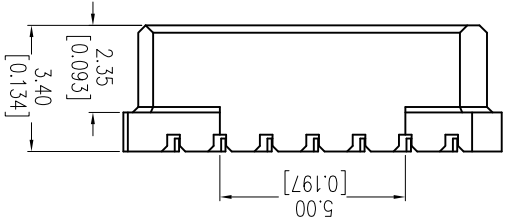
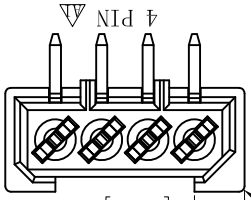
NOTES:
Voltage Rating: 50V AC/DC
Current Rating: 0.5AMP
Contact Resistance: 20mΩ max
Withstand Voltage: 500V AC/Minute
Insulation Resistance: 500MΩ min
Operation Temperature: -40°C to +105°C

Contact Material: Phosphor Bronze
Contact Plating: 100~200µ" Tin Plated Over
50~80µ" Nickel
Insulator Material: PA9T+33%GF UL94V-0 BLACK

Ordering Information

3652-S XXX -034 XX R03

No. of Pins	004: 04 Pin	G0=Gold Flash	R=Tape&Reel
Plating	005: 05 Pin	G3=10µ"Gold	
	006: 06 Pin	G4=15µ"Gold	
	007: 07 Pin	G5=30µ"Gold	
	008: 08 Pin	S0=Gold Flash/Tin	
	010: 10 Pin	S3=10µ"Gold/Tin	
	017: 17 Pin	S4=15µ"Gold/Tin	
	020: 20 Pin	S5=30µ"Gold/Tin	SN=Tin



Recommended P.C.B Layout (Top Side)
(PCB BOARD TOLERANCE±0.05)

PIN数	A	B	D	E
4	6.45	3.75	5.65	1.99
5	7.70	5.00	6.90	3.24
6	8.95	6.25	8.15	4.49
7	10.20	7.50	9.40	5.74
8	11.45	8.75	10.65	6.99
10	13.95	11.25	13.15	9.49
17	22.70	20.00	21.90	18.24
20	26.45	23.75	25.65	21.99

REV	DATE	MODIFICATION DESCRIPTION	CHANGE	DIM TOL	APPROVE	DATE	PROJ.	CUSTOMER NO.	WCON-Dongun	WCON-Kunshan	WCON-Dongun	WCON-Kunshan
A0	2016.10.20	NEW	---	Angle ±.3°	DATE	DATE	1/1		Tel: +86 769 85358920	Tel: +86 512 57468408	Fax: +86 769 85358915	Fax: +86 512 57468468
A1	2017.12.19	Modify	---	X.XXX ±0.15	CHECK	DATE	A4	Customer NO.	WCON-Dongun			
				X.XX ±0.25	DATE	DATE	mm	TITLE:	WCON-Kunshan			
				X.X ±0.40	SCALE	DATE	FIT	PART NO.	WCON-Kunshan			
					DRAW	DATE	SCALE	3652-SXXX-034XXR03	WCON-Kunshan			
					OPERATION	DATE	SCALE		WCON-Kunshan			

1.25mm RTF FEMALE, 90° DIP, H=3.4, 不带柱

Http: www.wcon.com

Http: www.wcon.com

X-ON Electronics

Largest Supplier of Electrical and Electronic Components

Click to view similar products for [Headers & Wire Housings](#) category:

Click to view products by [Wcon](#) manufacturer:

Other Similar products are found below :

[95000-104TRLF](#) [10135584-644402LF](#) [DF62W-EP2022PCA](#) [95000-106TRLF](#) [DF62W-2022SCA](#) [DF62W-EP2022PC](#) [2203348](#) [DF62W-2022SC](#) [1084018](#) [1029039](#) [1084017](#) [802-10-012-10-002000](#) [1112640](#) [1112639](#) [891-007-9SS-BST1T](#) [000-34000](#) [0008550134](#) [0009482033](#) [0009507031](#) [57102-F02-18ULF](#) [57102-S06-03LF](#) [57202-S52-04LF](#) [PCN6-15S-2.5E](#) [0039019024](#) [58102-G61-06LF](#) [582553-1](#) [0009485154](#) [0009508121](#) [0022285053](#) [0050291907](#) [018731A](#) [LY20-4P-DT1-P1E-BR](#) [02.125.8002.8](#) [60101931](#) [60598-1 \(Cut Strip\)](#) [M1625-3R/100](#) [61062-3](#) [61082-181009](#) [CSU011177004](#) [636-1427](#) [638009-1](#) [641938-9](#) [641991-4](#) [644168-1](#) [644827-2](#) [647662-1](#) [65039-019ELF](#) [65692-001LF](#) [65781-018](#) [65781-047](#)